

Dangers of Smoke and CO in Your Home



The Best Protection for You and Your Family: The i4 Combination CO/Smoke Detector

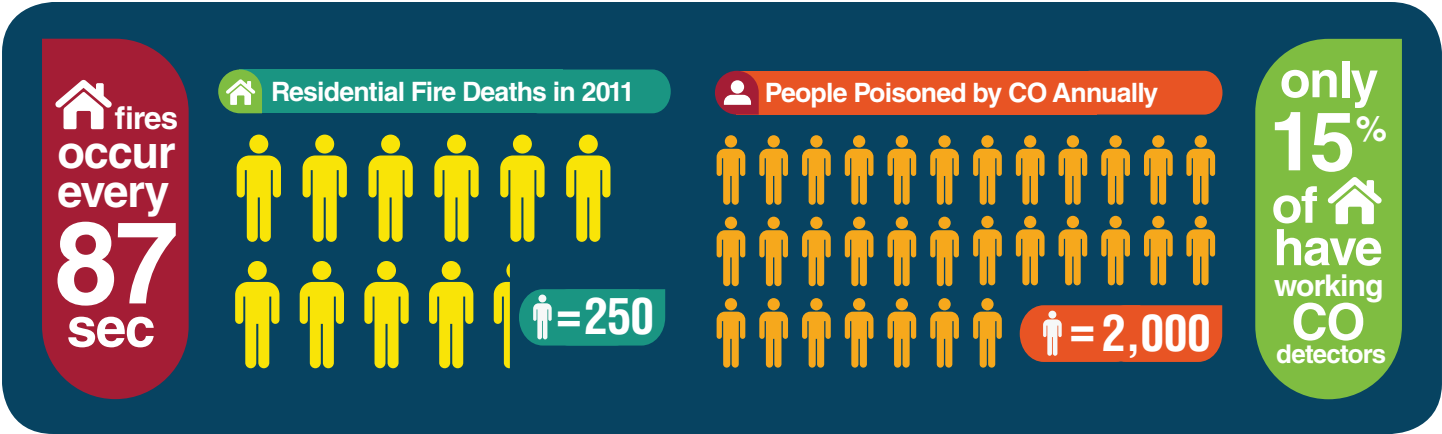
To keep your family safe from fire and carbon monoxide, you need a life safety product you can trust. The i4 series – the first system-connected combination CO/Smoke detector in the industry – provides your home with maximum fire and carbon monoxide gas protection. If dangerous levels of smoke or CO are detected, the i4 system sounds a local alarm and automatically alerts a 24/7 monitoring station to contact the fire department. Take your security system beyond intrusion coverage and transform it into a complete life safety system: add the award-winning i4 series to protect your home and loved ones from fire and deadly CO gas, too.

An added bonus? Including life safety devices in your security system may qualify you for insurance discounts. And because the i4 combines smoke and CO sensors in a single device, you'll have less clutter on your ceiling for a more attractive life safety system.



i4 CO/Smoke Detector

 **SYSTEM
SENSOR**[®]
www.systemsensor.com/i4



Benefits of professionally installed/monitored detection systems vs. retail smoke & CO alarms:

	i4 Monitored Smoke & CO Detector System	Retail Smoke & CO Alarms
What is the alarm notification method?	Local alarm sounds and notification sent to monitoring station	Local alarm only
Are first responders automatically notified in an emergency?	Yes	No
Are loved ones and pets protected when you are not home?	Yes	No
How are occupants notified in the event of an alarm?	All detectors sound, no matter where the alarm is initiated	Alarm sounds locally, but may not be heard by all occupants
Is detector monitored for ongoing functionality?	Yes	No – the alarm must be replaced every 10 years
Professional installation vs. self-installation	Professional: Proper placement and minimal false alarms	Self: Chance of improper placement and frequent false alarms
What happens when the detector reaches end-of-life?	Monitoring station is notified	May not notify occupants
How is the device powered?	Low-voltage power from a panel, with system-monitored battery backup	Battery-only, which might not function if improperly maintained
How often is battery replacement required?	Never	Annually
Is the CO cell replaceable?	Yes	No – entire device must be replaced when CO life expires

*Not every device is the same