

Galaxy® Flex

Honeywell



SECURITY THAT FITS WITH YOUR BUSINESS  
AND LIFESTYLE

**Protect your property**

# As Safe As Houses



Are you looking for a  
**security system** that is...

- Highly effective but easily affordable?
- Extremely versatile but easy to use?
- Feature-rich but easy to install?



**If so, you've found it!**

Galaxy Flex is the flexible security system from Honeywell: a powerful, integrated intruder and access control solution featuring visual alarm verification.

**Galaxy Flex:** for a real sense of security





Galaxy Flex

## Finding the right security system for you...

For any business, and many private individuals, security isn't an optional extra – it's a vital requirement in the ongoing fight against crime.

It's important to know that your business premises or residential property are completely protected but in these economically uncertain times, how can you find the most effective (and cost-effective) solution?

You don't need to search any longer – because Honeywell's Galaxy Flex security system provides the ideal solution for larger homes and small or medium-sized enterprises.

## Why choose Galaxy Flex?

Flex uses tried and trusted Galaxy technology to provide:

- **A single, integrated solution**, including intruder and door control security.
- **Time savings and minimal disruption**, through quicker, easier installation and automatic remote maintenance.
- **User-friendly features**, including multi-path communications, visual verification and the GX remote control app.



# Highly effective but **easily affordable**

Our system offers you real value for money, without compromising on security or quality.

We can deliver:

- **More choice:** Galaxy Flex is a complete system with a wide selection of peripherals including our remote control App, delivering the level of security you need, wherever and whenever you need it.
- **Greater effectiveness:** Our visual verification technology provides a more reliable and cost-effective way of verifying alarms than a separate CCTV or audio verification system.
- **Lower costs:** Galaxy Flex is designed to reduce false alarms – leading to less inconvenience, less likelihood of penalties, lower insurance premiums and a faster response to real alarm events.

**In addition, your investment in Flex will provide you with:**

- **Lower installation and servicing costs** than for other equivalent systems.
- **A scalable solution** that can grow as your needs grow (with up to 100 zones for businesses).
- **A comprehensive solution** that meets all of your security needs.



**Galaxy Flex:** for a real sense of security



## Extremely versatile yet easy to use

**What's the use of having a great system if it isn't easy to use?**

**That's why Galaxy Flex offers:**

### **Flexible design**

The main components of Flex have a clean, contemporary design but are also strong and robust. They are complemented by an attractive selection of interfaces and sensors.

### **Flexible communications**

Galaxy Flex includes options to signal over multiple paths, using wired and mobile phone technology. This means that the system is always on-line for alarm reporting and can be monitored remotely by an alarm receiving centre for around the clock response to potential faults.

### **Flexible features**

Other features include advanced configuration programming through customisable event actions and timer scheduled response; a hybrid panel that offers an advanced wireless solution to reduce the need for cabling thus improving the aesthetics; and Honeywell's bi-directional and agile routing technologies, which enhance reliability and can extend the sensor battery life (up to five years).

## Security with simplicity

### **User interfaces**

The system has various intuitive user interfaces, including Galaxy TouchCenter (with graphical menus and on-screen help files). All user interfaces have optional proximity operation (so users don't need a PIN code). This reduces user errors, false alarms and unnecessary engineer call-outs.

### **Access control**

Access levels can be easily set and controlled for different groups of personnel, using templates and schedules that can be programmed to activate automatically. Authorised personnel gain access via simple touch-and-go readers.

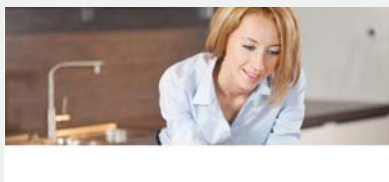
### **Security management**

For maximum flexibility, security personnel can use readers to arm and disarm the intruder alarm functions.



# Feature-rich with maximum convenience

These are just some of the many features you can enjoy with Galaxy Flex, many of which also make it easier and more cost-effective to install:



## A single platform for home and business

With one point of contact for service and maintenance scheduling.



## Design

Choice of panels with subtle design to fit in the most demanding of design spaces.



## Wireless options

Delivering a high level of security, with **quick** and unobtrusive installation.



## Visual verification

Using a Honeywell camera and alarm receiver will help you to reduce the cost and inconvenience of false alarms and speed up the process in the event of a genuine intrusion.



## Much more than just an alarm system

Enjoy a system that does all you need and beyond, from access control to flood, temperature, carbon monoxide and fire detection plus building management solutions.



## Multi-path communications manager

Thanks to its capability of connecting to mobile phone networks and landlines, Galaxy Flex will always be connected with your alarm receiving centre.



## Communication options

Always stay in control thanks to the remote control capability from your mobile phone and our **GX Remote Control app** accessible via your favourite mobile device.



## 12 wired zones

Keep your insurance cost down with a fully approved system across Europe.



## Patented technologies

Honeywell's patented bi-directional radio and agile routing technologies, allow up to eight RF portals for more reliable signalling.

**Galaxy Flex:** for a real sense of security



# Galaxy Flex

**Suitable for both residential and commercial applications, Galaxy Flex is a comprehensive, flexible and cost-effective intrusion solution for small to mid-sized installations, based on more than 20 years of tried and trusted Galaxy technology.**

## **Delivering:**

- Cost-effective visual verification for all alarm types.
- Flexible and secure multi-path IP signalling.
- Highly customisable operation, maximising security and convenience for your business and lifestyle needs.

## **Key components of the Galaxy Flex system include:**

### **Mobile app**

Use your favourite mobile device to check and control your Galaxy Flex system anytime anywhere with our dedicated mobile app **GX Remote Control**.

### **TouchCenter**

This stylish keypad has a large, colour touch screen to provide easy control of the Flex system components. It also makes staff training quick and easy.

### **Remote control**

Use your favourite mobile device to access your Galaxy Flex anytime anywhere via SMS and our mobile app.

### **All-in-one, compact control box**

This avoids the need to install extra boxes.

### **Integrated door/access control**

One system to manage, even for extended security needs.

### **Accessories that can be connected to the system include:**

Motion sensors, glassbreak detectors, carbon monoxide sensors, portable panic buttons, key fobs, smoke detectors, and flood and temperature sensors without the need for intrusive wiring.

## **Peace of mind for...**



**Business Owners**



**SME Managers**



**Homeowners**

**and ease of installation**



**for the Engineer**



**Find out more:**

[www.galaxyflex.com](http://www.galaxyflex.com)

Fax: +44 (0) 1698 738300

Email: [securitysales@honeywell.com](mailto:securitysales@honeywell.com)

**Honeywell Security Group**

Newhouse Industrial Estate

Motherwell

Lanarkshire

ML1 5SB

UK

Tel: +44 (0)844 8000 235

[www.honeywell.com](http://www.honeywell.com)



All other company names and products are trade names, trademarks or registered trademarks of their respective companies.

Honeywell is a registered trademark of Honeywell International, Inc.



HSG-FLEX-04-UK(0115)SB-E  
January 2015  
© 2015 Honeywell International Inc.

**Honeywell**