



**FIRE CONTROL
INSTRUMENTS**



AMM-4S

**ADDRESSABLE MONITOR
MODULE**



DESCRIPTION

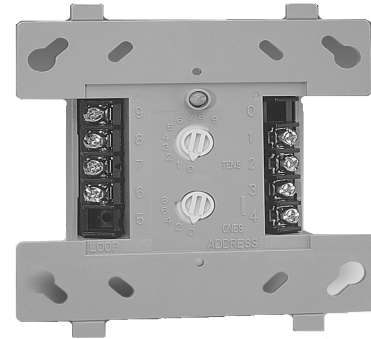
The Addressable Monitor Module AMM-4S features a single Style D, Class A circuit. It may also be configured as a Style B, Class B initiating circuit with end of line resistor. This module provides an address for a group of up to twenty (20) conventional 2-wire smoke detectors. These include the FCI SBS, 301, PSD and CPD Series smoke detectors and System Sensor Models 2100-S and 2100-TS.

Any alarm initiating devices with normally open (N.O.) dry contacts, such as heat detectors, linear heat detection devices, projected beam smoke detectors, 4-wire smoke detectors, water flow switches, tamper switches, manual stations, etc. may also be installed in this circuit.

The AMM-4S module is designed for installation in the signaling line circuit of any FCI analog addressable control panel. The signaling line circuits of FCI analog addressable panels are designed to accommodate up to 99 monitor modules per circuit.

The initiating circuit of the AMM-4S has a maximum line resistance of 25 ohms, allowing the module to stay in alarm with one smoke detector activated.

The AMM-4S is designed to mount in a 4" square junction box 2 1/8" deep.



FEATURES

- **Accommodates up to Twenty (20) FCI Conventional 2-Wire Smoke Detectors**
- **Class A, Style D, or Class B, Style B Initiating Device Circuit**
- **25 Ohm Line Resistance for Initiating Device Circuit**
- **Accommodates any N/O Dry Contact Device**
- **Compact Size Allows Easy Installation**

AGENCY APPROVALS

UL	S1949
EM	3006398
NYC-MEA	MEA 427-91-E Vol. III
CSFM	Approved

TECHNICAL INFORMATION

Supervisory current	.0003 amp.
Alarm current	.0054 amp.
Operating temperature	32 to 120°F (0 to 49° C)
Relative humidity	10 to 93% (non-condensing)
Dimensions	4 1/2" H x 4" W x 1 1/4" D (3.3 x 5.5 x 1.25 cm)

ORDERING INFORMATION

Part Number	Model	Description
190-00013	AMM-4S	Addressable Monitor Module, Single circuit, Style D, Class A

Specifications are provided for information only, are not intended to be used for installation purposes, and are believed to be accurate. However, no responsibility is assumed by Fire Control Instruments, Inc. for their use. Specifications subject to change without notice. ©2001 All Rights Reserved