

www.firecontrolinstruments.com

MULTI-MOD SIX ZONE INTERFACE MODULE

DESCRIPTION

The Multi-Mod Six Zone Interface module (MMI-6S) provides six Style B (Class B) or three Style D (Class A) supervised Initiating Device Circuits (IDCs) suitable for use with U. L. Listed conventional 2-wire smoke sensors as well as any normally open contact device. See Addendum to FCI Installation/Operating Manuals, 9000-0427, for all U. L. Listed devices.

The MMI-6S connects to the Signaling Line Circuits (SLCs) of the FCI 7200, FV7200, and 7100 Series fire alarm control panels. Each of the MMI-6S Initiating Device Circuits occupies its own address on the system's SLC allowing each to be fully programmable in its control-by-event sequence of operation.

The address of the first Initiating Device Circuit is set with a pair of rotary dials. Each remaining circuit is automatically assigned to its own subsequent address. The MMI-6S module includes an address disable jumper matrix to allow a maximum of two unused addresses to be turned off to free these addresses for other purposes. An additional pair of jumpers selects either Style B or Style D circuit configurations.

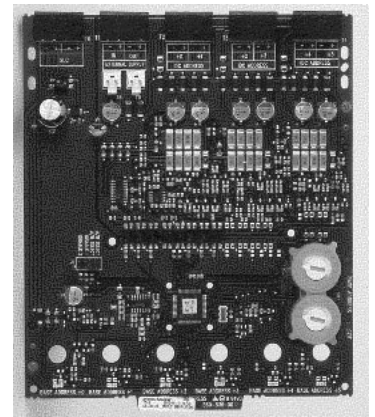
Each Circuit has its own status LED that blinks to indicate proper polling and turns on steady when the output has been activated.

Two Multi-Mod Series units can be mounted in one BB-2 cabinet. Additional mounting options include the CH-6 chassis that can accommodate six Multi-Mod Series modules. The CH-6 chassis can be installed in a custom cabinet or can be mounted in the BB-6 cabinet allowing up to six Multi-Mod Series modules in one cabinet.

The Multi-Mod Series is ideal for applications where centralized location of circuits are required. As many as 60 Initiating Device Circuits may be located in a cabinet that is only 12.63" H x 24" W x 6.5" D in dimension saving valuable wall space in mechanical rooms and electrical closets and reducing cost of installation.

FEATURES

- **Each MMI-6S Module Provides Six Style B (Class B) or Three Style D (Class A) Individually Addressable, Individually Programmable Initiating Device Circuits**
- **Suitable for Use with U. L. Listed 2wire Conventional Smoke Sensors and Normally Open Contact Devices**
- **Removable Wiring Terminal Blocks allow Ease of Installation and Servicing**
- **Terminal Blocks can Accommodate 12 to 18 AWG Wire**
- **Flexible On-board Jumper Configuration Feature allowing One or Two Monitoring Circuit Addresses to be Disabled**
- **Designed for use with 7100 and 7200 Series Fire Alarm Control Panels**
- **Individual LED Indicators**
- **Ideal for Retrofit Applications**
- **As Many as Thirty-Six Initiating Device Circuits in One 12" x 24" x 6.5" Cabinet**
- **Two Mounting Cabinets Available for Two (BB-2 Cabinet) to Six (BB-6 Cabinet) MMI-6S Modules**



MMI-6S



An ISO 9001 Company

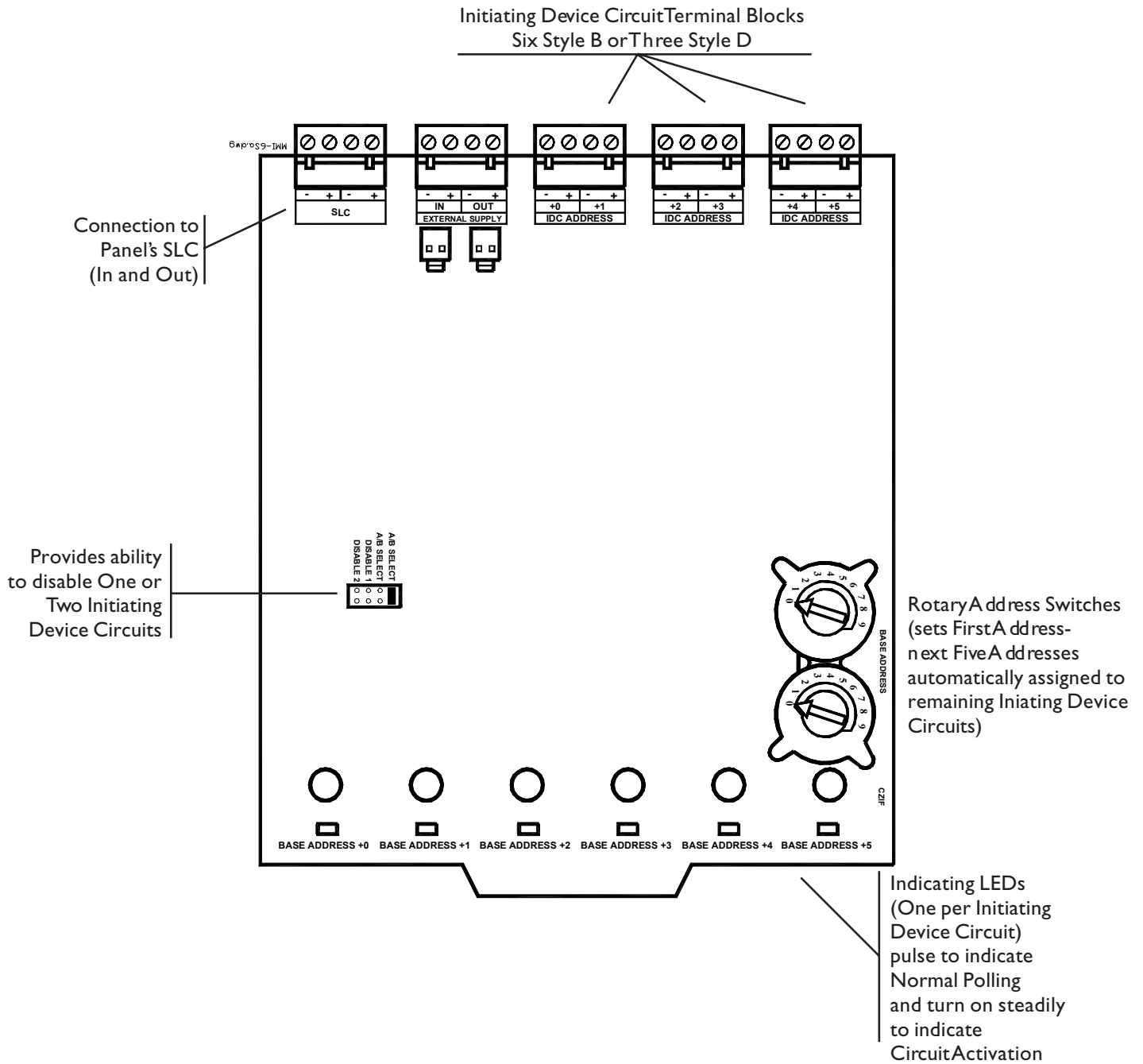
Specifications are provided for information only, and are not intended to be used for installation purposes and are believed to be accurate. However, no responsibility is assumed by Fire Control Instruments for their use. Specifications subject to change without notice.

© 2002

All Rights Reserved

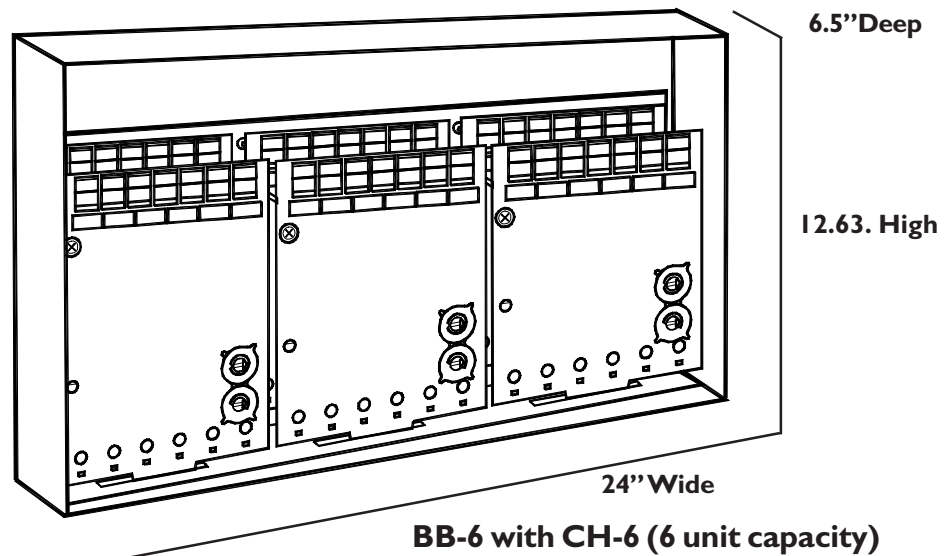
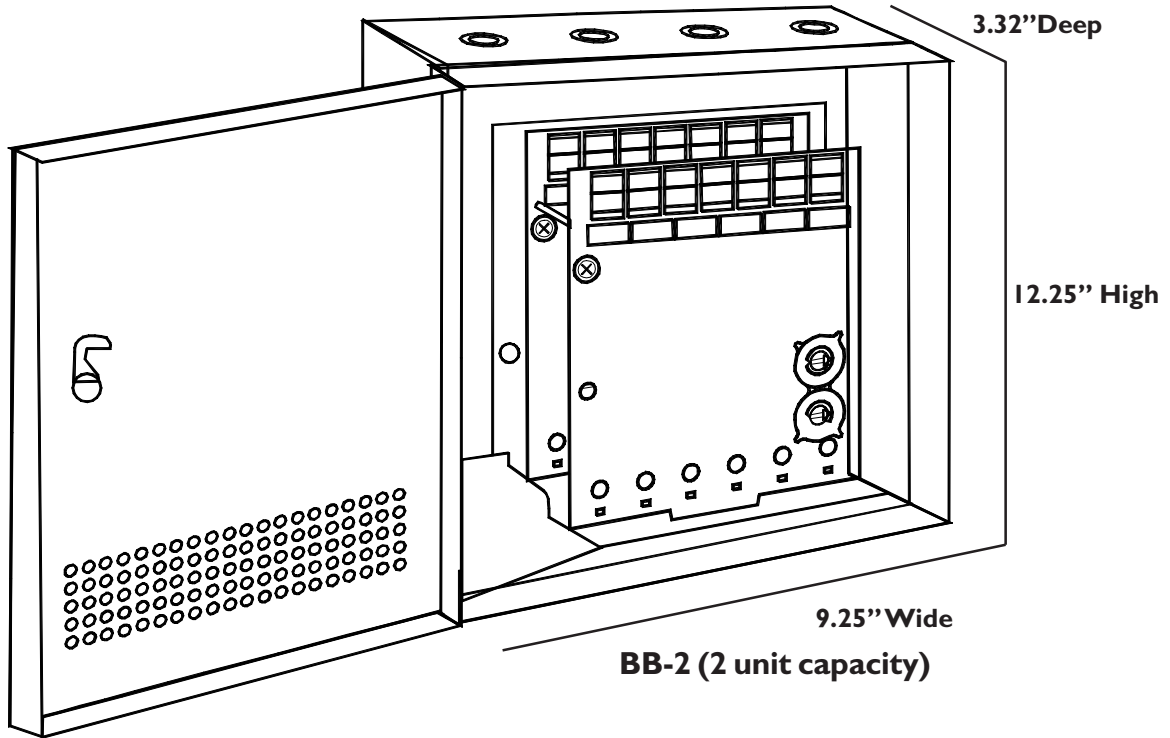
9020-0547/VER. 1.1

Page 1 of 4



Specifications are provided for information only, and are not intended to be used for installation purposes and are believed to be accurate. However, no responsibility is assumed by Fire Control Instruments for their use. Specifications subject to change without notice.

www.firecontrolinstruments.com



Specifications are provided for information only, and are not intended to be used for installation purposes and are believed to be accurate. However, no responsibility is assumed by Fire Control Instruments for their use. Specifications subject to change without notice.

© 2002 All Rights Reserved

FIRE CONTROL INSTRUMENTS

16 Southwest Park, Westwood, MA 02090 USA • Tel: 781-471-3000 • Fax: 781-471-3099 • www.firecontrolinstruments.com

www.firecontrolinstruments.com

SPECIFICATIONS

Operating Voltage	15-32VDC
Stand-by Current	2 mA
Alarm Current	40 mA (with all six LEDs on)
Maximum IDC Wire Resistance	25 Ohms
Temperature Range	32° F to 120° F (0° to 49° C)
Humidity	10 to 85% Non-condensing
Dimensions	6.8" H x 5.8"W x 1.25" D (17.3 x 14.7 x 3.18 cm)
BB-2	12.25" H x 9.25"W x 3.32" D (31.12 x 23.5 x 8.43 cm)
BB-6	12.63" H x 24"W x 6.5" D (32.08 x 60.96 x 16.51 cm)
External Supply Voltage	
DC Voltage	18-28Volts, Power Limited
Ripple Voltage	0.1Volts rms maximum
Current	90 mA per Module

AGENCY APPROVALS

U.L. 864

ORDERING INFORMATION

PART NUMBER	MODEL	DESCRIPTION
190-90034	MMI-6S	Multi-Mod 6 Zone Interface Module
1100-1318	BB-2	Back Box, 2 Unit
1100-1319	BB-6	Back Box, 6 Unit, requires CH-6
1100-1320	CH-6	6-Unit Mounting Chassis

Specifications are provided for information only, and are not intended to be used for installation purposes and are believed to be accurate. However, no responsibility is assumed by Fire Control Instruments for their use. Specifications subject to change without notice.

© 2002 All Rights Reserved

FIRE CONTROL INSTRUMENTS

16 Southwest Park, Westwood, MA 02090, USA • Tel: 781-471-3000 • Fax: 781-471-3099 • www.firecontrolinstruments.com