

ISO-6

Isolator Module

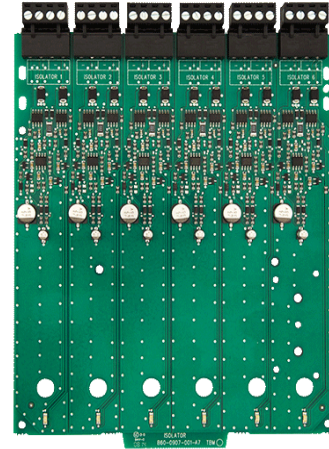
General

ISO-6 Six Isolator Module

The ISO-6 Six Isolator Module is an automatic switch that opens when the line voltage drops below four volts. Isolator modules should be spaced between groups of sensors or spaced with modules in a loop to protect the rest of the loop. If a short occurs between any two isolators, then both isolators immediately switch to an open circuit state and isolate the devices between them. The remaining units on the loop continue to fully operate.

Ordering Information

ISO-6: Fault Isolator Module



ISO-6 Module

FEATURES & BENEFITS

- Provides a removable 12 AWG to 18 AWG plug-in terminal blocks
- Displays individual LED indicators
- Unused addresses may be disabled
- Contains rotary address switches
- Complies with Class A or Class B operation
- Includes mounting hardware
- Mounts up to two modules in a BB-2 enclosure (optional)
- Mounts up to six modules in a BB-6 enclosure with CH-6 chassis (optional)

ISO-6 Technical Specifications

SYSTEM

General Specifications:

- Operating Voltage: 15 to 32 VDC
- Maximum SLC Wiring Resistance: 40 Ohms
- Temperature Range: 32°F to 120°F (0° to 49°C)
- Relative Humidity: 10% to 85% non-condensing
- Wire Gauge: 12 to 18 AWG
- Dimensions: 6.8"H × 5.8"W × 1.25"D

Specifications ISO-6:

- Standby Current: 2.7 mA
- Maximum Current Draw: 102 mA

Specifications BB-2 Enclosure:

- Dimensions: 12½"H × 9½"W × 3.67½"D

Specifications BB-6 Enclosure:

- Dimensions: 24½"H × 12.55½"W × 6.47½"D

Accessories: .



Figure 1 displays the BB-6 Enclosure with the CH-6.



Figure 1 BB-6 Enclosure with CH-6 Chassis

TEMPERATURE AND HUMIDITY RANGES

This system meets NFPA requirements for operation at 0 – 49°C/32 – 120°F and at a relative humidity 93% ± 2% RH (noncondensing) at 32°C ± 2°C (90°F ± 3°F).

However, the useful life of the system's standby batteries and the electronic components may be adversely affected by extreme temperature ranges and humidity. Therefore, it is recommended that this system and its peripherals be installed in an environment with a normal room temperature of 15 – 27°C/60 – 80°F.

For more information

Learn more about Gamewell-FCI's ISO-6 and other products available by visiting www.Gamewell-FCI.com

Honeywell Gamewell-FCI

12 Clintonville Road
Northford, CT 06472-1610
203.484.7161
www.honeywell.com

STANDARDS

The ISO-6 is designed to comply with the following standard:

UL Standard: UL 268 9th Edition

AGENCY LISTINGS AND APPROVALS

These listings and approvals apply to the modules specified in this document. In some cases, certain approval agencies, or listing may be in process. Consult factory for latest listing status.

UL: S1949

ULC Listed: C5669

CSFM: 7300-1653:0160

FM: 3012062

MSFM: 2102

ISO 9001 Certification

For a complete listing of all compliance approvals and certifications, please visit:

<http://www.gamewell-fci.com/en-US/documentation/Pages/Listings.aspx>

Velociti® E3 Series® and Gamewell-FCI® are registered trademarks of Honeywell International Inc.

UL® is a registered trademark of Underwriters' Laboratories Inc.

This document is not intended to be used for installation purposes. We try to keep our product information up-to-date and accurate. We cannot cover all specific applications or anticipate all requirements. All specifications are subject to change without notice.