

## MAXPRO® NVR Hybrid SE (Standard Edition)

32/48/64-Channel (16 Analog Inputs) Enterprise Hybrid Network Video Recorder (NVR)

Honeywell's MAXPRO NVR Hybrid SE is an open, flexible and scalable Hybrid (IP and analog) video surveillance system. MAXPRO NVR Hybrid SE utilizes Honeywell's HD cameras to offer a powerful high definition IP recording and security monitoring system for enterprise installations. It also supports analog cameras, enabling transition by keeping existing analog investment while transitioning to IP.

### Open – Broad Device Integrations

- Integrates to full line of Honeywell IP cameras and HVE encoders
- Support for ONVIF Profile S and Profile G, PSIA, real time streaming protocol (RTSP) standards
- Native device integrations supporting eQuIP® Series cameras' new features: 4K resolution, H.265 video compression codec, 3D PTZ control, 360° camera and multi-imager camera support, and intelligence events

### Easy to Install and Use – Turnkey Solution

- Pre-installed with all required software and pre-licensed for 32, 48 or 64 channels with no extra channel license costs
- Easy 3-Click\* wizard to live video for auto configuration – quick and efficient IP system install
- Simple and logical configuration pages make setup a breeze even for the novice installer
- Supports simultaneous recording, live monitoring, search and system management for up to 64 IP cameras including high definition formats with easy to use clients
- Easy to use desktop clients, web client and mobile apps
- Intelligence events from cameras can be viewed at the alarm panel, and trigger recording on MAXPRO NVRs for further investigation
- Learn One, Know them All - Common feature-rich user experience across the MAXPRO NVR Family and MAXPRO VMS / Viewer provides familiarity across a broad range of Honeywell products saving training costs

\*With default settings and in a local area network for specific models



**HD**

MAXPRO NVR Hybrid SE



### Scalable Integrated Security Solution

- Multiple MAXPRO NVRs deployed for system expansion using a distributed architecture and integrated with the MAXPRO Viewer multi-site software or MAXPRO VMS enterprise video management system
- Integration with Honeywell WIN-PAK® and Pro-Watch® Access Control Systems providing an integrated Access Control, Intrusion and Video solution

### Flexible NVR Hybrid Hardware

- Provides the processor, analog video inputs and storage enclosure in one chassis, resulting in both space and cost savings
- Rack mountable (4U, rack ears included) with 4 removable drives, SATA hard drives used for operating system partition and video storage
- Dual 1 GB NICs are optimized to separate record and viewing data to ensure 100% recording and smooth playback even with multiple client connections

## MARKET OPPORTUNITIES

The continual growth of IP networks and the demand for high definition video have led to the need for convergence of analog security systems and IP systems for many companies across the globe. This has resulted in a strong demand for a Hybrid (IP and analog) end-to-end security system deployment. MAXPRO NVR Hybrid SE provides an open, flexible and scalable system with operational power to address the needs of a wide variety of applications including education, commercial, retail, healthcare and many other applications. When the need is for an easy to install, simple to use, and feature rich hybrid network video recorder, the solution is MAXPRO NVR Hybrid SE.

# MAXPRO® NVR Hybrid SE (Standard Edition)

32/48/64-Channel (16 Analog Inputs) Enterprise Hybrid Network Video Recorder (NVR)

## SOFTWARE FEATURES

### Multi-Platform Support

- Allows local or remote operations including live and recorded video monitoring, configuration and system management in a single desktop client interface.
- Support for Web Client on Windows PC (Internet Explorer, Chrome and Firefox browsers) and Mac (Safari browser). Supports live, playback/search of recorded video for up to 4K resolution on all cameras, taking snapshots and viewing presets for PTZ cameras.
- Support for mobile monitoring clients on iOS and Android Phones and Tablets with MAXPRO NVR apps: Login securely with https communication, Create favorite salvos (cameras up to 3x3 on tablets and 2x4 on phones per salvo), View Live and Recorded Video, Perform PTZ control through Presets and Monitor & Manage Alarms, Support Touch ID on iOS devices for fast and secure login.

\*H.265 is not currently supported on Web client and mobile Apps.

### Enhanced Monitoring with Desktop Clients

- Multi-zoom views on HD video and support for Profile cameras to create virtual cameras by digitally zooming into the field of view. Example: Zoom in on a cash register in one view of the HD camera while at the same time monitoring the cash operator in the zoom out view of the HD camera.
- Ability to investigate events and alarms by simultaneously viewing alarm videos at various stages. For every alarm, users can view the video captured during pre-alarm, on-alarm, and post-alarm, and also view live video from the camera which triggered the alarm.
- Enriched video viewing experience through the intuitive video rendering engine that optimizes CPU utilization by altering the video frame rate.
- Cost-effective enhanced H.264 and H.265 HD video rendering on remote desktop clients with support for monitoring of up to 23 1080p HD cameras in real time (30 fps)/690 fps 1080p HD with no-time lapse using the GPU capabilities of in-built processor graphics with 6th generation Intel® Core™ Processors for client systems. Up to 4 1080p HD @ 30 fps/120 fps on local client.
- Video Surround feature simplifies the process of tracking subjects through a set of surrounding cameras.
- Create, save and name salvos under My Salvos or Shared Salvos. Support for aspect ratio - 16:9, 4:3 and Stretched for video salvos.
- Support for 3D Positioning to allow the operator to pan, tilt and zoom into a specific region of interest efficiently by just clicking the live view window.
- IP PTZ control and digital zoom on fixed cameras. 360° viewing experience and 180° stitched view of equalP multi-imager cameras providing heightened situational awareness and increased video surveillance coverage.
- Support for auto switching of streams utilized by the client with multi-stream cameras, saving workstation hardware cost by displaying more cameras simultaneously with lower resolution streams instead of the primary HD streams.

- Support for On-Demand Live Streaming to save connectivity costs by stopping camera streaming to the NVR when no NVR clients request live viewing.
- Network throttling options for optimized streaming and client rendering under low bandwidth without interrupting critical business data transfers in the same network.

### React Fast and Protect your Assets

- Fast search by date/time, enhanced time line, time jump, bookmarks, SMART Motion search, calendar, preview, film strip view and events. Increase productivity with more efficient search/investigation: Get to the relevant video in few clicks without having to review hours of recordings.
- SMART Motion search – Fast and efficient forensic search and investigation for objects/motion on recorded video using Honeywell SMART motion detection Analytics algorithms on the Client PC without impacting the NVR Server load.
- Capture and export clips and still images in simple .wmv, .asf, .mpvc and .bmp formats. Clips (.wmv) signed with digital signature for authentication.
- MAXPRO Video Container (.mpvc) format support – only playable in MAXPRO desktop clients and standalone Clip Player, quicker exports of raw video and support for estimating clip size and split to multiple clips to ensure clip storage media matches, include clip player with exported clip for easier review of video evidence and efficient investigation.
- Clip Player – Portable standard secure player for archived and exported clips (\*.mpvc), 360 camera de-warping and 2x2 Salvo support, Smooth playback support with up to 256x review speed, No software installation required to run on a Windows PC, option to include with clip export.
- Email notification on camera, system and operator events.

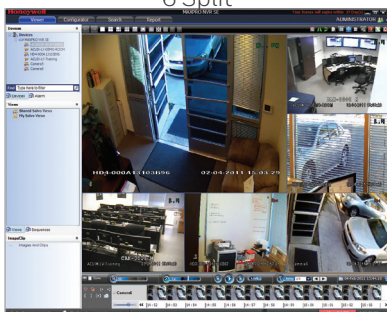
### Enhanced Recording Engine

- Separate event video, continuous recording and archived video retention times.
- Flexible Motion detection (VMD) options with Server (SMART VMD) or Camera based motion events support. Reduced false alarms with object based motion detection analytics with SMART VMD.
- Video Archival – Archive large amounts of recorded Video data for long term storage either scheduled or manually, review through NVR desktop client or standalone Clip Player.
- Multi-stream support – Support multiple streams from camera for varying resolutions and frame rates for live, recording, low bandwidth desktop clients, web clients and mobile apps.
- Single channel license\* for Encoders and Multi-imager 360 cameras (\* - Max system capacity of 64 channels).
- Support for scheduled backfilling of the recordings from the edge storage of equalP 1080p IR PTZ, 1080p WDR and 4 MP WDR cameras to the NVR using ONVIF Profile G for robust recording against temporary network failure.
- 1+1/N+M recorder failover and failback automatically or manually with MAXPRO VMS.

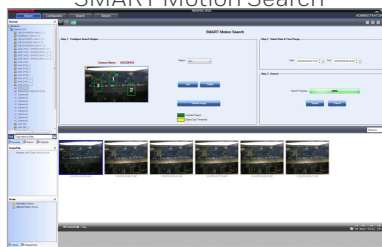
### More Great Software Features

- Easy to use and enhanced camera configuration and discovery workflow – Reduce over configuration using NVR System Load and Storage Calculator and ensure the system is configured to meet requirements for retention and reliability.
- Status Monitor – Save operational costs with an integrated Dashboard to easily monitor the health and recording status of all the MAXPRO NVRs from any workstation or PC in the network.
- Role-based operator privileges supporting Windows and local users.
- Advanced security features with encryption support for communication between desktop client to NVR and secure https login for Web Client and Mobile apps.
- Keyboard control with UltraKey Plus and UltraKey Lite over Ethernet.
- Event history and operator log reporting with export to .PDF, Crystal Reports, Excel or Word.
- Local and multi-language support.
- Support for secured communication between MAXPRO NVR and VMS, server and client.

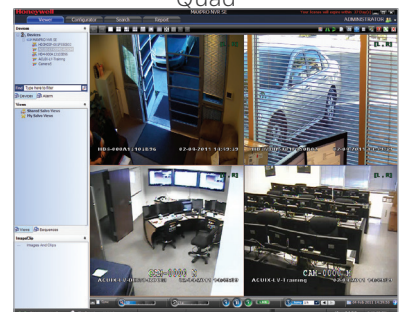
6 Split



SMART Motion Search



Quad



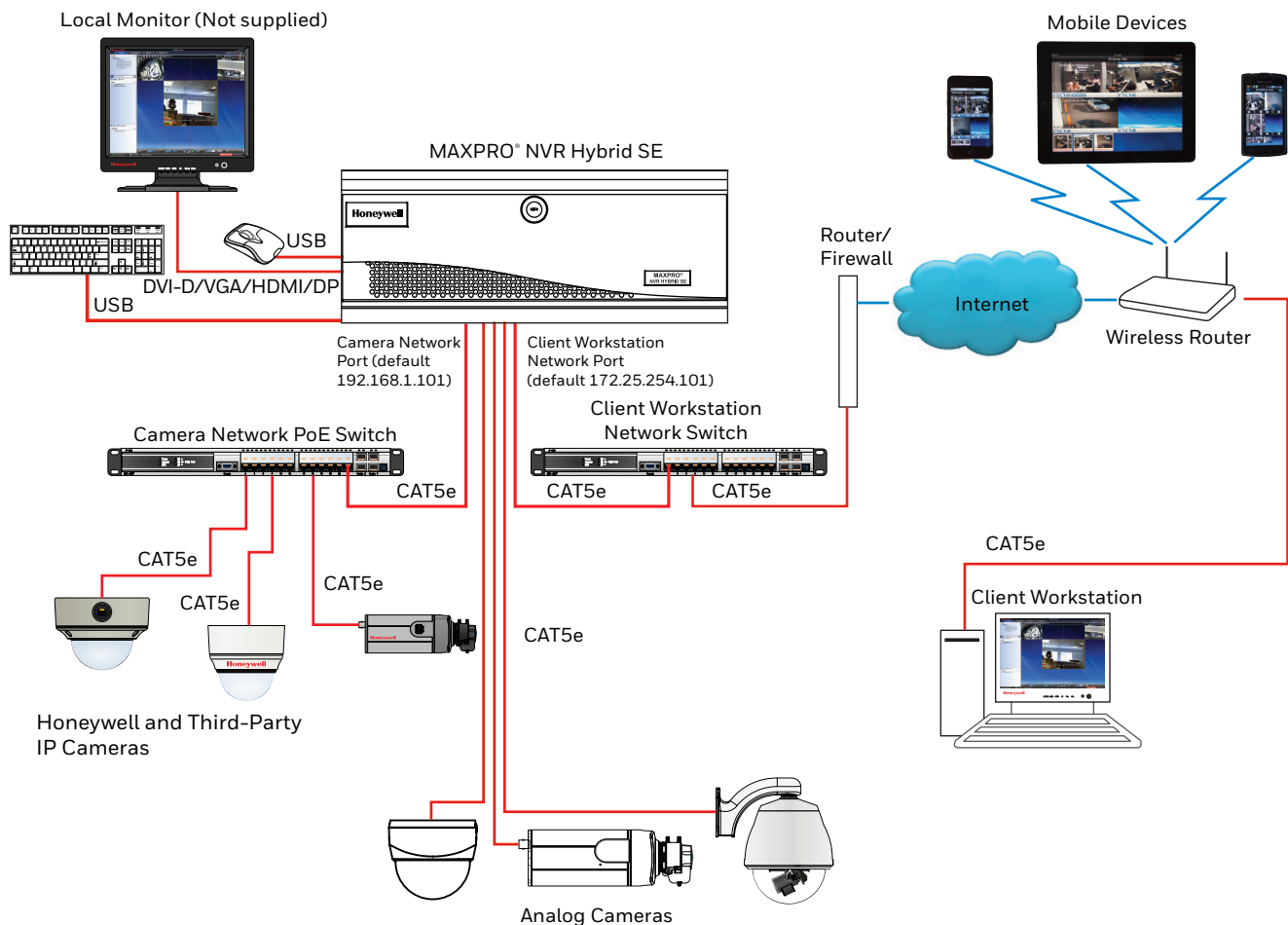
# MAXPRO® NVR Hybrid SE (Standard Edition)

32/48/64-Channel (16 Analog Inputs) Enterprise Hybrid Network Video Recorder (NVR)

## HARDWARE FEATURES

- Record and monitor up to 64 channels with combination of 16 analog with 480 fps @ CIF NTSC (400 fps @ CIF PAL) or 120 fps @ 4CIF NTSC (100 fps @ 4CIF PAL) and 48 IP with 1440 fps @ 1080p (4 Mbps bitrate) HD OR all 64 IP with 1920 fps @ 720p HD or 1280 fps @ 1080p (4 Mbps bitrate) HD per MAXPRO NVR Hybrid SE. Network bandwidth/throughput supported per NVR Hybrid with Incoming: 160 Mbps, Outgoing: 350 Mbps; Total: 510 Mbps.
- Archival support of 16 channels @ 4 Mbps bitrate each/ 64 Mbps total archival throughput capacity per MAXPRO NVR Hybrid SE, with outgoing archival storage throughput of 200 Mbps
- Multi-stream support with maximum 128 streams per MAXPRO NVR Hybrid SE. Support for configuring 1 preferred stream for continuous recording and 1 preferred stream for live video/ motion based recording per camera
- Supports One-Way Audio (for specific IP cameras) with live, playback and clip export on desktop clients for up to 64 IP channels
- Analog cameras support with 16 looping inputs, 16 I/Os and 1 analog PTZ control port on the unit
- Includes HDMI, VGA, DVI-D and Display ports for single monitor support for local client and spot monitor support for analog cameras
- Supports displaying 16 cameras at one time on the NVR Hybrid local monitor and rendering performance using GPU of up to 4 1080p HD @ 30 fps/120 fps on local client
- 4 removable bays with 1 operating system & storage hard drive and 3 storage only hard drives (optional 1 TB, 2 TB, 3 TB, 4 TB or 6 TB drives). Internal storage capacity from 1 TB to 24 TB.
- Includes dual 1 GB Network ports optimized to separate record and viewing data to ensure 100% recording and smooth playback even with multiple client connections
- 4U rack mount form factor with locking front bezel. Rack ears included for use with four post racking systems.

## SYSTEM DIAGRAM



# MAXPRO® NVR Hybrid SE (Standard Edition)

32/48/64-Channel (16 Analog Inputs) Enterprise Hybrid Network Video Recorder (NVR)

## SPECIFICATIONS

OPERATIONAL	
MAXPRO NVR SOFTWARE - VERSION 4.5 OR ABOVE	
DATABASE	Microsoft® SQL Server® 2012 Express
OPERATING SYSTEM	Windows 10 IoT Enterprise for Embedded Systems
IMAGE COMPRESSIONS SUPPORTED	MJPEG, MPEG-4, H.264, H.265
SUPPORTED HONEYWELL IP CAMERAS AND ENCODERS	Supports Performance Series IP, equalP® Series cameras. Refer to <a href="http://www.security.honeywell.com/hota/compatibility/index.html">www.security.honeywell.com/hota/compatibility/index.html</a>
AUDIO SUPPORT	1-way audio for specific IP camera models. Refer to <a href="http://www.security.honeywell.com/hota/compatibility/index.html">www.security.honeywell.com/hota/compatibility/index.html</a>
SUPPORTED THIRD PARTY IP CAMERAS AND ENCODERS	Refer to the MAXPRO® NVR Compatibility for a comprehensive list of compatible products to which this device is integrated. <a href="http://www.security.honeywell.com/hota/compatibility/index.html">www.security.honeywell.com/hota/compatibility/index.html</a>
ANALOG PTZ PROTOCOLS SUPPORT	MAXPRO, VCL, Pelco P, Pelco D, GE/Kalatel
MAXIMUM NUMBER OF DESKTOP CLIENT CONNECTIONS	Desktop Client - 38 per unit from 19 remote workstations + 1 local on NVR Hybrid
SALVO LAYOUTS	Desktop Client - Full, 2x2, 1x5, 3x3, 2x8, 1x12, 4x4. Web Client - 2x2, 1x1, 1x2, 1x3. Mobile app (Phone) - 2x2, 2x4, 1x2, 1x1. Mobile app (Tablet) - 3x3, 2x2, 1x1.
PICTURE CONTROLS PER CAMERA	Sharpness, blur, brightness, contrast, hue, saturation, maintain aspect ratio, stretched, original size and picture mirror
OSD	Concealed text option
PLAYBACK CONTROLS PER CAMERA - DESKTOP CLIENT	FWD/REV Play x (1, 2, 4, 8, 16) Slow FWD/REV Play x (1/2, 1/4, 1/8)
SEARCH TYPES	Time/date timeline, time jump FWD/REV, bookmarks, calendar, preview, film strip, event search and SMART Motion Search
RECORDING SCHEDULE	Constant and event based with H/M/D and holiday and exception days
RECORDING METHODS PER CAMERA	Constant, event based and user activated
LIVE SETTINGS PER CAMERA	Compression format, resolution and frame rate
RECORD SETTINGS PER CAMERA	Same as live or reduced frame rate
CLIP FORMAT	Honeywell MPVC playable with standalone MAXPRO Clip Player for faster and secure exports. WMV with digital certificate for authentication playable with Windows media player. ASF for faster exporting of longer than an hour backup clips in native compression format.
VIDEO CLIP AUTHENTICATION	Digital signature, verification tool provided
MOTION DETECTION LOCATION	Camera based for supported models or Server based (SMART VMD) for all models (except 360 fisheye / panomorph views)
EVENT RECORDING	Pre and post duration setting
OPERATOR REPORTING	Per user, configurator, session and viewer
EVENT REPORT	Per camera or recorder events
OPERATORS	1024
RECORDING AND MONITORING PERFORMANCE	16 analog with 480 fps @ CIF NTSC (400 fps @ CIF PAL) or 120 fps @ 4CIF NTSC (100 fps @ 4CIF PAL) and 48 IP with 1440 fps @ 1080p (4 Mbps bitrate) HD; OR all 64 IP with 1920 fps @ 720p HD or 1280 fps @ 1080p (4 Mbps bitrate) HD. 1-way audio for up to 64 IP channels. Network bandwidth/throughput - Incoming: 160 Mbps, Outgoing: 350 Mbps, Total: 510 Mbps. Rendering performance using GPU of up to 4 1080p HD @ 30 fps / 120 fps on local client. Note: Oncom Grandeye 360 Cameras are not supported with GPU rendering and use CPU rendering by default. Clip export on local client is recommended with default rendering settings of Throttle Frame Rate enabled.
MAX VIDEO STREAMS SUPPORT	Web Client: Live - 64 streams, Playback - 32 streams. Note: Live streams consumed are per camera being viewed live and duplicate live views of the same camera in multiple or same web client instance are allowed without consuming additional streams. Playback streams consumed are per playback stream being viewed and each playback stream being viewed consumes 1 additional stream. Desktop Client: Live - 256 streams, Playback/Video retrieval sessions - 32, Sync playback - 9 streams. 256 live streams limit excludes 1 stream used per camera if SMART VMD is enabled. Maximum live streams per camera is 15 with SMART VMD enabled. Mobile App: 16 streams of 1080p HD @ 5 fps each. Note: During archival operations, maximum no of playback streams recommended from Desktop Client and Web Client is 16 streams.
SERVER BASED VMD (SMART VMD) PERFORMANCE - CHANNELS SUPPORTED	Channels at max fps: 64 ch IP at 1920 fps @ 4CIF/VGA or 64 ch IP at 1920 fps @ 720p or 50 ch IP at 1280 fps @ 1080p or total 100 Megapixel. 16 analog at 480 fps @ CIF/120 fps @ 4CIF and 48 IP at 1440 fps @ 1080p or total 100 Megapixel. All Channels at fps: 64 ch IP at 1920 fps @ 4CIF/VGA or 1920 fps @ 720p or 640 fps @ 1080p or total 100 Megapixel. 16 analog at 480 fps @ CIF/120 fps @ 4CIF and 48 IP at 1440 fps @ 1080p or total 100 Megapixel.
ARCHIVAL PERFORMANCE	16 channels @ 4 Mbps bitrate each / 64 Mbps total archival throughput capacity. Outgoing archival storage throughput of 200 Mbps.
MULTI-STREAM PERFORMANCE	Support for maximum 128 streams. Support for configuring 1 preferred stream for continuous recording and 1 preferred stream for live video / motion based recording per camera

OPERATIONAL	
MAXPRO NVR HYBRID SE HARDWARE	
PROCESSOR	Intel® Core™ i7-4790, 3.6 GHz, Intel® HD Graphics 4600
MEMORY	8 GB
POWER SUPPLY	Single 400 W
OS PARTITION	100 GB partition in storage drive 1
STORAGE CAPACITIES	1 TB to 24 TB
STORAGE HARD DRIVE OPTIONS	4 bays - 1 operating system & storage drive, 3 field-upgradable, 1, 2, 3, 4 or 6 TB SATA hard drives
OPTICAL	22x DVD-RW
NETWORK	Two 1 GB Ethernet included
CHASSIS WITH LOCKING BEZEL	4U 4 bay
REAR PANEL CONNECTIONS	
VIDEO INPUT	16 looping, BNC 1 Vp-p @ 75 Ohms
VIDEO OUTPUT	MAIN-OUT Single monitor support-1 HDMI, 1 VGA, 1 DVI-D, 1 Display port and SPOT-OUT (RCA)
SENSOR INPUTS GENERAL PURPOSE	16, NO/NC - selectable
CONTROL OUTPUTS	16, Relay Output
SERIAL PORTS	2x Front USB, 4x Rear USB, 1xRS485
NETWORK	2x RJ45
ELECTRICAL	
INPUT VOLTAGE	115-230 VAC, 50-60 Hz 10/7A
POWER DISSIPATION	Average BTU rating = 500 BTU/HR Peak BTU rating = 1370 BTU/HR
MECHANICAL	
CONSTRUCTION	Housing: Steel chassis Finish: Black matte paint
DIMENSIONS (W X H X D)	21.65" x 17.40" x 7" (550 mm x 442 mm x 180 mm)
WEIGHT	Unit: 64 lb (29 kg) Shipping: 64 lbs (29 kg) to 84 lbs (38 kg)
ENVIRONMENTAL	
TEMPERATURE OPERATING	Operating: 5°C to 40°C (40°F to 104°F) Storage: -10°C to 65°C (14°F to 150°F)
RELATIVE HUMIDITY	0% - 90%, non-condensing
REGULATORY	
EMISSIONS	FCC Part 15, Subpart B, Class B; EN55022:2010
SAFETY	ANSI/UL 60950-1; CAN/CSA C22.2 60950-1; EN60950 1:2006+A11:2009+A12:2011 +A1:2010
IMMUNITY	EN50130-4:2011
WARRANTY	
WARRANTY AND ADVANCED REPLACEMENTS	Refer to <a href="http://www.honeywellvideo.com/support/warranty/index.html">http://www.honeywellvideo.com/support/warranty/index.html</a>

# MAXPRO® NVR Hybrid SE (Standard Edition)

32/48/64-Channel (16 Analog Inputs) Enterprise Hybrid Network Video Recorder (NVR)

## SPECIFICATIONS

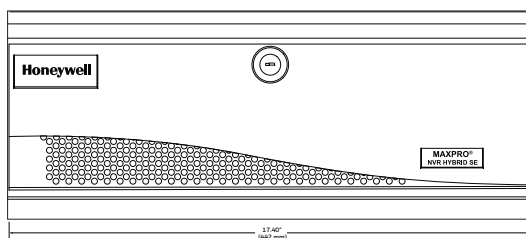
MAXPRO NVR Desktop Client Only Workstation—Specifications			
PERFORMANCE CONFIGURATION	With GPU Rendering Capability*		Without GPU Rendering Capability
	Minimum	Recommended	Recommended
PERFORMANCE CONFIGURATION	Up to 13 1080p HD Cameras, 1 Monitor (390fps @1080p HD)	Up to 23 1080p HD cameras, 2 Monitors (690fps @1080p HD)	Up to 9 HD Cameras (1 selected panel only, Throttle Frame Rate setting enabled)
PROCESSOR	Intel® Core™ i5-4460 or equivalent 4th generation Intel® Core™ Processors for client systems	Intel® Core™ i7-6700 or equivalent 6th generation Intel® Core™ Processors for client systems	Intel® Core™ 2 Duo Processor E6750 2.66 GHz or Quad Core Intel® Xeon® E5405 2.0 GHz
GRAPHICS ADAPTER	In-built Processor Graphics (GPU): Intel® HD Graphics 530, 4600, or equivalent		512 MB or higher Display Card (Optional)
SYSTEM MEMORY (RAM)	8 GB		4 GB
OS & APPLICATION – HARD DISK DRIVE OR PARTITION	Minimum 100 GB Partition drive or separate hard drive		
NETWORK INTERFACE	Minimum – 1 Gigabit network interface card		
OPERATING SYSTEM	Microsoft® Windows 7 Professional SP1, Windows 8.1, Windows 10 (64bit)		Microsoft® Windows 7 Professional SP1, Windows 8.1, Windows 10 (64bit/32bit)
OPTICAL DRIVE	DVD-RW		
MONITOR RESOLUTION	Video resolution 1280x1024 pixels, 32 bit		
KEYBOARD/MOUSE	102-key keyboard and mouse		

**NOTE:** The performance specifications above are recommended for systems with fixed or PTZ cameras only. Oncam Grandeye 360 cameras are not supported with GPU rendering and use CPU rendering by default. On Windows 7 workstations, GPU rendering is only supported through the motherboard monitor outputs and any additional graphics cards should be disabled in BIOS. On Windows 8.1, Windows 10 workstations with Intel GPU and any additional graphics cards, at least one monitor should be connected to the motherboard monitor output.

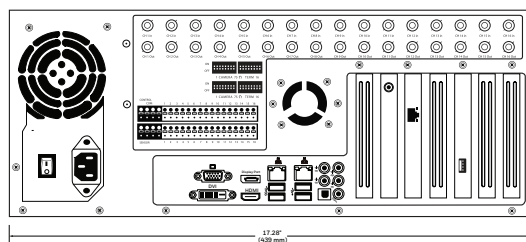
\* - H.265 cameras are supported with GPU rendering only with v4.5 or newer version.

## SPECIFICATIONS

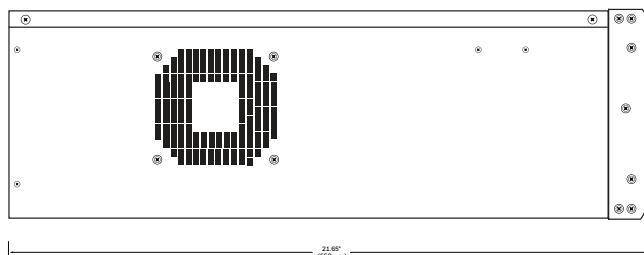
Front View



Rear View



Side View



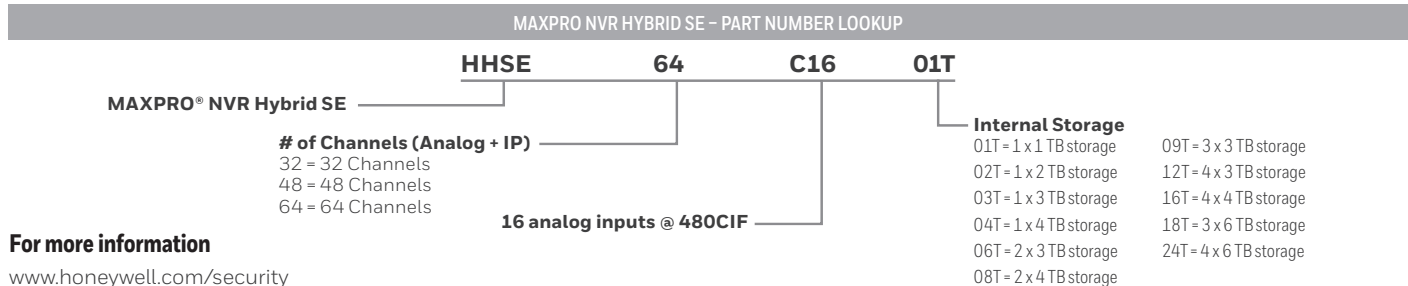


# MAXPRO® NVR Hybrid SE (Standard Edition)

32/48/64-Channel (16 Analog Inputs) Enterprise Hybrid Network Video Recorder (NVR)

## ORDERING

MAXPRO NVR HYBRID SE		MAXPRO NVR HYBRID SE	
HHSE32C1601T	1 TB, 32 channel (Analog + IP) with 16 Analog @ 480CIF, 1x1 TB HD, 3x spare HD slots	HHSE32C1608T	8 TB, 32 channel (Analog + IP) with 16 Analog @ 480CIF, 2x4 TB HD, 2x spare HD slots
HHSE48C1601T	1 TB, 48 channel (Analog + IP) with 16 Analog @ 480CIF, 1x1 TB HD, 3x spare HD slots	HHSE48C1608T	8 TB, 48 channel (Analog + IP) with 16 Analog @ 480CIF, 2x4 TB HD, 2x spare HD slots
HHSE64C1601T	1 TB, 64 channel (Analog + IP) with 16 Analog @ 480CIF, 1x1 TB HD, 3x spare HD slots	HHSE64C1608T	8 TB, 64 channel (Analog + IP) with 16 Analog @ 480CIF, 2x4 TB HD, 2x spare HD slots
HHSE32C1602T	2 TB, 32 channel (Analog + IP) with 16 Analog @ 480CIF, 1x2 TB HD, 3x spare HD slots	HHSE32C1609T	9 TB, 32 channel (Analog + IP) with 16 Analog @ 480CIF, 3x3 TB HD, 1x spare HD slots
HHSE48C1602T	2 TB, 48 channel (Analog + IP) with 16 Analog @ 480CIF, 1x2 TB HD, 3x spare HD slots	HHSE48C1609T	9 TB, 48 channel (Analog + IP) with 16 Analog @ 480CIF, 3x3 TB HD, 1x spare HD slots
HHSE64C1602T	2 TB, 64 channel (Analog + IP) with 16 Analog @ 480CIF, 1x2 TB HD, 3x spare HD slots	HHSE64C1609T	9 TB, 64 channel (Analog + IP) with 16 Analog @ 480CIF, 3x3 TB HD, 1x spare HD slots
HHSE32C1603T	3 TB, 32 channel (Analog + IP) with 16 Analog @ 480CIF, 1x3 TB HD, 3x spare HD slots	HHSE32C1612T	12 TB, 32 channel (Analog + IP) with 16 Analog @ 480CIF, 4x3 TB HD
HHSE48C1603T	3 TB, 48 channel (Analog + IP) with 16 Analog @ 480CIF, 1x3 TB HD, 3x spare HD slots	HHSE48C1612T	12 TB, 48 channel (Analog + IP) with 16 Analog @ 480CIF, 4x3 TB HD
HHSE64C1603T	3 TB, 64 channel (Analog + IP) with 16 Analog @ 480CIF, 1x3 TB HD, 3x spare HD slots	HHSE64C1612T	12 TB, 64 channel (Analog + IP) with 16 Analog @ 480CIF, 4x3 TB HD
HHSE32C1604T	4 TB, 32 channel (Analog + IP) with 16 Analog @ 480CIF, 1x4 TB HD, 3x spare HD slots	HHSE32C1616T	16 TB, 32 channel (Analog + IP) with 16 Analog @ 480CIF, 4x4 TB HD
HHSE48C1604T	4 TB, 48 channel (Analog + IP) with 16 Analog @ 480CIF, 1x4 TB HD, 3x spare HD slots	HHSE48C1616T	16 TB, 48 channel (Analog + IP) with 16 Analog @ 480CIF, 4x4 TB HD
HHSE64C1604T	4 TB, 64 channel (Analog + IP) with 16 Analog @ 480CIF, 1x4 TB HD, 3x spare HD slots	HHSE64C1616T	16 TB, 64 channel (Analog + IP) with 16 Analog @ 480CIF, 4x4 TB HD
HHSE32C1606T	6 TB, 32 channel (Analog + IP) with 16 Analog @ 480CIF, 2x3 TB HD, 2x spare HD slots	HHSE32C1618T	18 TB, 32 channel (Analog + IP) with 16 Analog @ 480CIF, 3x6 TB HD, 1x spare HD slots
HHSE48C1606T	6 TB, 48 channel (Analog + IP) with 16 Analog @ 480CIF, 2x3 TB HD, 2x spare HD slots	HHSE48C1618T	18 TB, 48 channel (Analog + IP) with 16 Analog @ 480CIF, 3x6 TB HD, 1x spare HD slots
HHSE64C1606T	6 TB, 64 channel (Analog + IP) with 16 Analog @ 480CIF, 2x3 TB HD, 2x spare HD slots	HHSE64C1618T	18 TB, 64 channel (Analog + IP) with 16 Analog @ 480CIF, 3x6 TB HD, 1x spare HD slots
ACCESSORIES		HHSE32C1624T	24 TB, 32 channel (Analog + IP) with 16 Analog @ 480CIF, 4x6 TB HD
HHSECHD1T	1 TB Upgrade Kit, MAXPRO NVR Hybrid SE	HHSE48C1624T	24 TB, 48 channel (Analog + IP) with 16 Analog @ 480CIF, 4x6 TB HD
HHSECHD2T	2 TB Upgrade Kit, MAXPRO NVR Hybrid SE	HHSE64C1624T	24 TB, 64 channel (Analog + IP) with 16 Analog @ 480CIF, 4x6 TB HD
HHSECHD3T	3 TB Upgrade Kit, MAXPRO NVR Hybrid SE	MAXPRO NVR HYBRID SE - CHANNEL UPGRADE LICENSES	
HHSECHD4T	4 TB Upgrade Kit, MAXPRO NVR Hybrid SE	HNM01UP	MAXPRO NVR - 1 Channel License Upgrade to add support for up to 64 Channels per NVR
HHSECHD6T	6 TB Upgrade Kit, MAXPRO NVR Hybrid SE	HNM04UP	MAXPRO NVR - 4 Channel License Upgrade to add support for up to 64 Channels per NVR
Refer to the storage calculator on <a href="http://www.honeywellvideo.com">www.honeywellvideo.com</a> to help determine what size unit to order.		HNM08UP	MAXPRO NVR - 8 Channel License Upgrade to add support for up to 64 Channels per NVR
		HNM16UP	MAXPRO NVR - 16 Channel License Upgrade to add support for up to 64 Channels per NVR
		HNM32UP	MAXPRO NVR - 32 Channel License Upgrade to add support for up to 64 Channels per NVR



### For more information

[www.honeywell.com/security](http://www.honeywell.com/security)

### Honeywell Security and Fire

2700 Blankenbaker Pkwy, Suite 150

Louisville, KY 40299

1.800.323.4576

[www.honeywell.com](http://www.honeywell.com)

ONVIF and the ONVIF logo are trademarks of ONVIF Inc. Honeywell reserves the right, without notification, to make changes in product design or specifications.

L/MPNHSE47D/D | 2/18  
© 2017 Honeywell International Inc.

**Honeywell**