

Pro-Watch® Facility Manager

Alarm management system

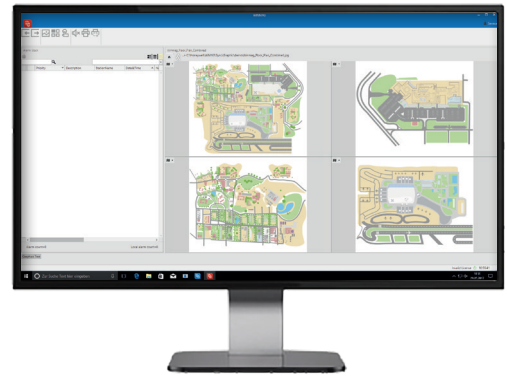
Alarm management system with new design.

Pro-Watch Facility Manager is a PC based management system, a technology specifically designed to meet high security, integration, workflows for integrators and end users.

Facility Manager manages and controls the following applications under one common interface:

- Intrusion
- Fire
- Video
- Access control
- Rescue route technology
- Escape door control
- Building management systems
- Public address and Voice evacuation
- Open Technology such as OPC and BACNET
- HTML, AutoCAD

Facility Manager sets new standards in functionality, flexibility and quality. The large installed base around the globe demonstrates its outstanding quality and high customer satisfaction.



Messages are displayed graphically in 2D / 3D and in text form.

Due to the open system architecture and customization abilities Facility Manager adapts dynamically to changes in a connected system. Facility Manager is a highly scalable solution, and existing options can be easily expanded to include, for example, access control or video.

The integration of an existing or planned building management system including analogue values can be easily implemented with Facility Manager.

Already existing security systems by other manufacturers can be seamlessly integrated into Facility Manager. When the network and the requirements grow, Facility Manager can be expanded to accommodate them. This ensures that you are investing in a reliable system for the future.

A reliable and effective alarm management system is an absolute necessity in the industrial and public sector.

PERFORMANCE FEATURES AT A GLANCE

- Modular designed alarm management software for security
- Visualization of messages
- Direct control of connected hardware in the network
- Workflow management for security guards
- Individual assignment of user rights
- Integrated simulation functions
- Comprehensive recording of events and operations
- Web-based generation of reports
- Integration of video sequences possible
- Time programs/calendar function
- Default with integrated database

BENEFITS

- Facility Manager adapts to customer processes
- Investment protection for existing components by easily integrating them into the Facility Manager eco-system
- Extend the system by adding the desired options to the existing license
- Unique in the market by displaying and interacting with 3D models
- Seamless integration with existing Third Party systems, and easy future additions

Pro-Watch Facility Manager

Humans are visual beings

The ability to visually assess communications enables rapid data processing and the implementation of prompt and target-oriented interactions.

In the area of highly sensitive security management, there is an urgent need to receive information in a visual format on the current status from all areas of the monitored systems.

With that in view, Facility Manager provides an innovative, user-friendly and easily customizable user interface with a wide range of standards functions, e.g.:

- Alarmstack
- Priority control
- Individual workflows and operations
- Macro functions enable automatic background processes without user intervention
- Flexible, window-oriented graphics
- Various types of user rights
- Connection of systems over standard PC interfaces, e.g. TCP/IP, serial port
- Open interface to various systems
- Connecting modules to Third Party products (control panels, video matrices, building management system)
- Individual alarm handling and evaluation

Facility Manager can receive data from various networks, process them and then display in a customizable way:

- Graphics with dynamic symbols
- Tables
- Individual work flows (alarm programs)
- Print out on up to 10 printers per workplace
- Logging in database and files

Facility Manager data is stored in a protected, encoded database.

Facility Manager incorporates a global editing environment and a variety of predefined work flows.

Modular design for individual solutions

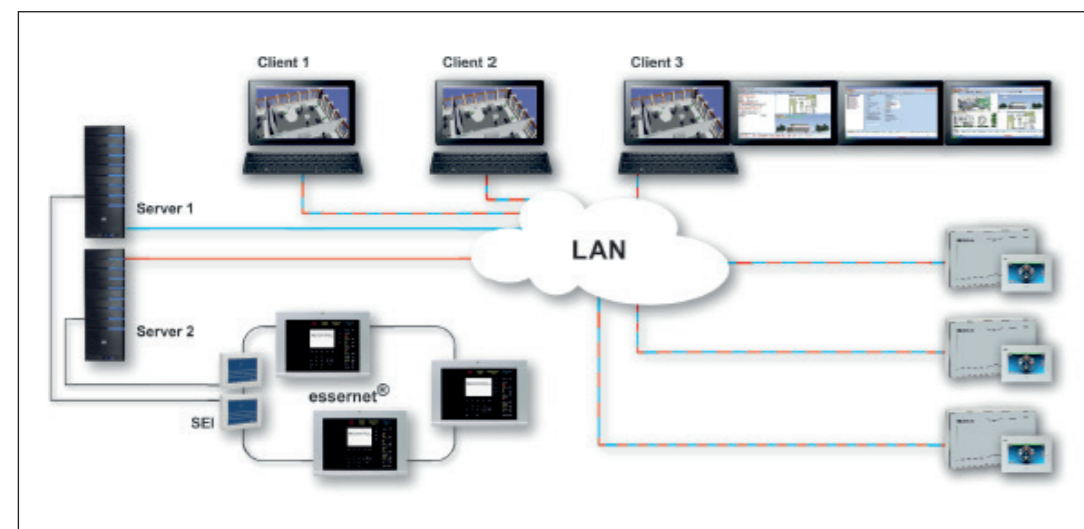
Thanks to its modular design, Facility Manager offers the appropriate solutions for every size of system and for every area of application.

Ranging from Facility Manager standard package for single stations systems to multi-station systems with incorporation of various networks.

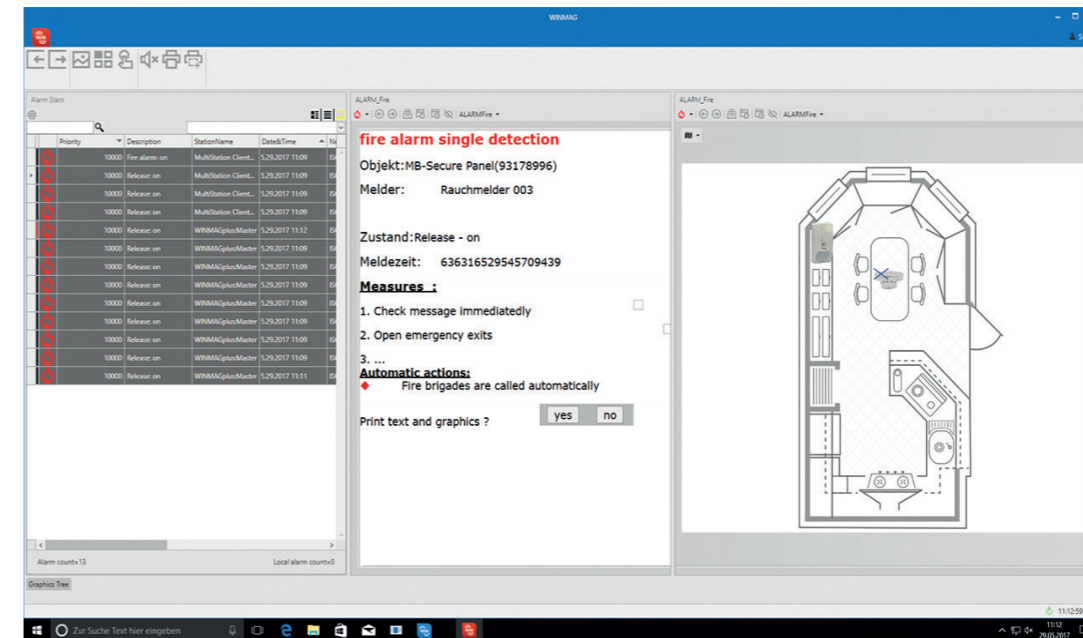
The Facility Manager software is designed modular and has several license options. The base for Facility Manager is the installation DVD. This DVD includes also a demo version.

The base licence enables activation of the standard package or the demo version to run as unlimited visualization software on the server workstations and on clients in the network.

The individual options can be ordered separately as an addition to the standard licence.



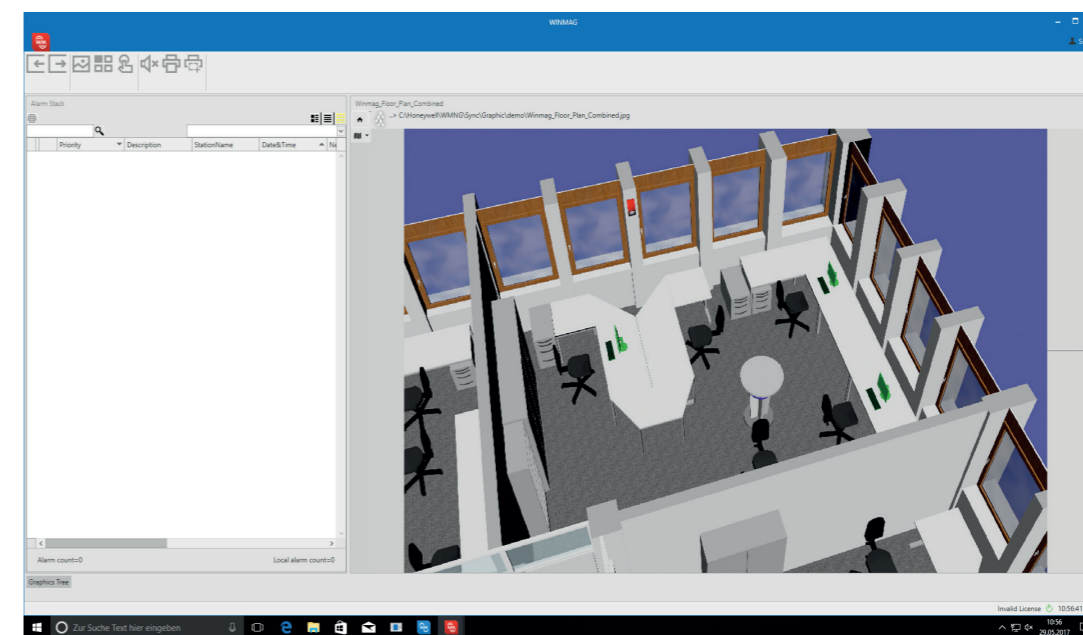
Pro-Watch Facility Manager



The alarm window

Every alarm workflow is executed in a separate window. The widgets are used to control the alarm program flow.

Up to 10 alarm programs can be processed simultaneously and independently. The alarm stack can cope with up to 1000 workflows that are sorted dynamically according to priority. The design and appearance of an alarm program is customizable and can be adapted to end customer processes.

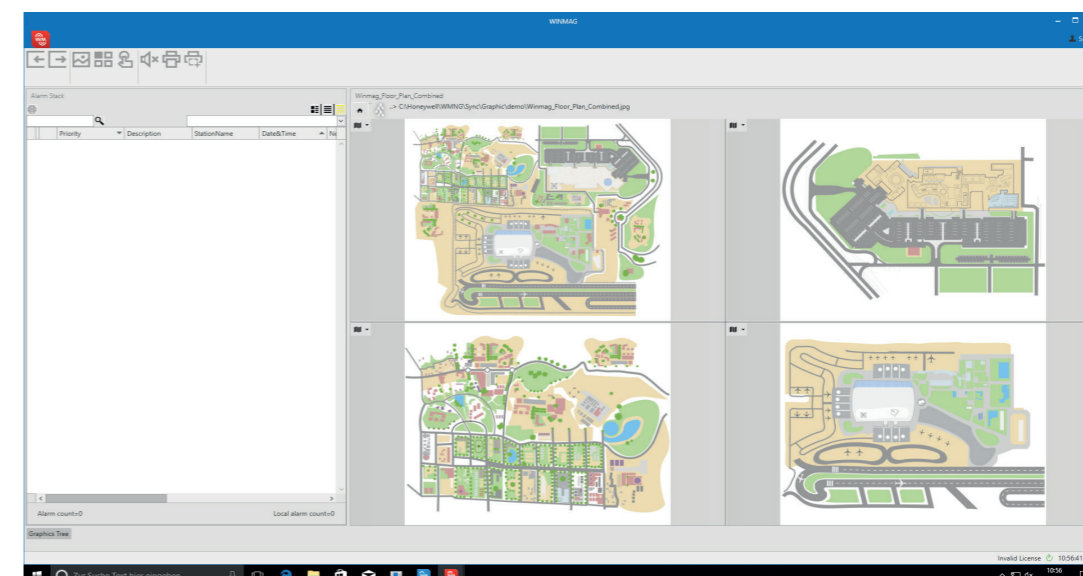


3D integration as an option

The 3D option allows use of 3D models of the commonly used formats for improved display of alarm and status information.

An integration into the overview window as well as a separate display in a detailed view in case of an alarm is possible. The presentation of the model can be done as full view and as a detailed view depending on the requirements.

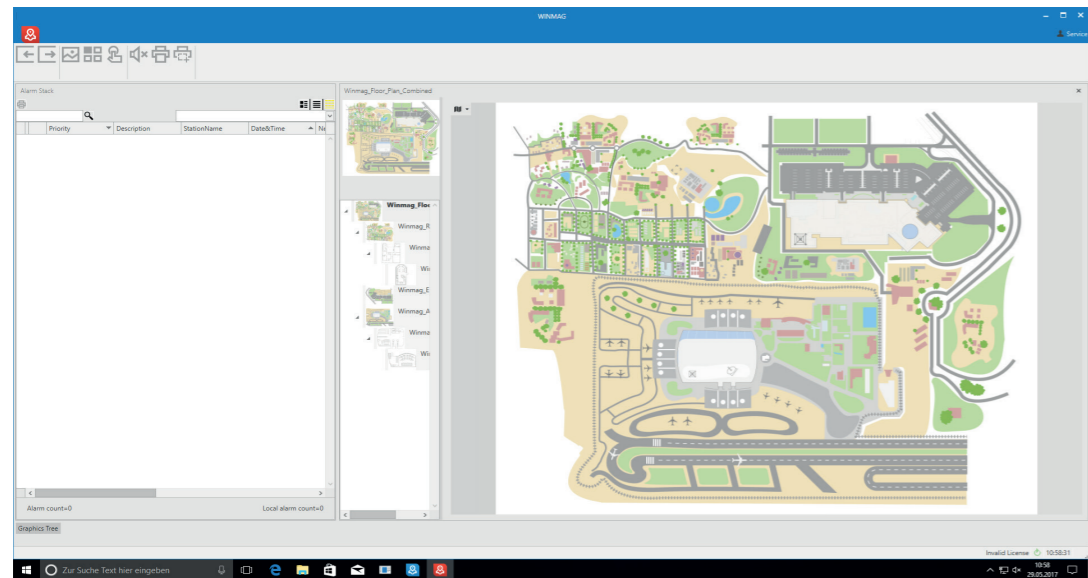
The 3D view allows an optimal three-dimensional visualization of the overall situation inside a building based on the respective user rights.



The standard view

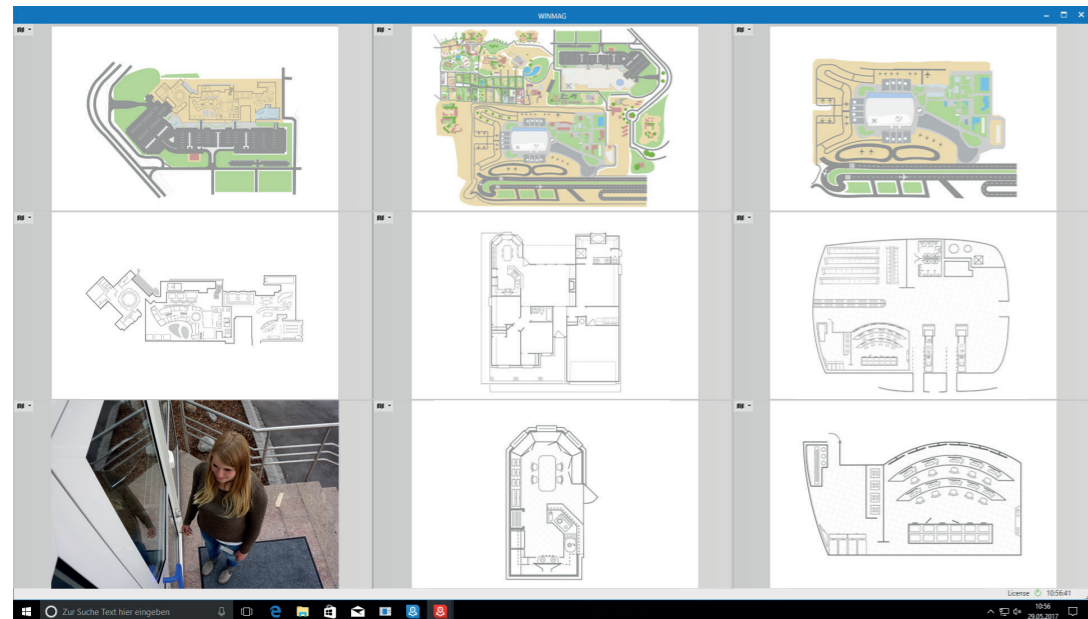
A special form of the graphic background window is the „Standard view“. Facility Manager can be displayed as a full screen or as a window on the desktop. The Facility Manager program separates the program window into several views. The program background can be customized accordingly to the customer specification. Facility Manager is enabled for „Multi-monitors“ usage and supports up to 4 monitors.

Pro-Watch Facility Manager



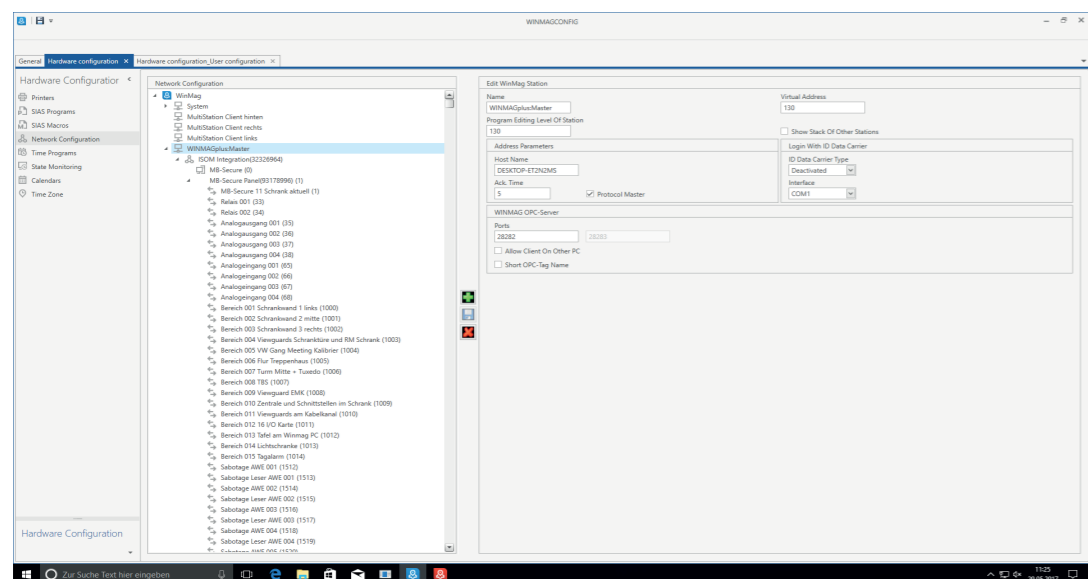
The graphics window

Enables the display graphics in a graphic tree as well as the integration of active and dynamic graphics into a basic graphic (graphic in graphic). It is used to display symbols including dynamic display of detectors and system features. It allows the starting of macros or pop-up programs on left or right mouse clicks on a symbol. Display of "Quick Information" for graphic references and symbols.



The multiview window

Enables the display of up to 12 windows on a monitor. All windows are displayed in a split view next to each other and have the same size. Automatic zooming of graphics to fit to the size of the origin window is included. The example shows a window including a live video stream.



System configuration window

The "System configuration" contains functions for the configuration of networks, objects, I/O devices, types, alarm reasons, symbols, users, menu bars, printer settings and system settings. Based on the user rights only the appropriate configuration settings are displayed.

Pro-Watch Facility Manager

Additional features

- Free programmability
- Flexible, window-oriented graphics
- Display and location of detectors in graphics
- Display of actual situation
- Polygon graphic references
- Control of video matrices
- Start of other programs from Facility Manager
- High-performance programming language SIAS for customer-specific adaptation of internal processes
- Remote control via modem or ISDN possible
- Access to other databases via ODBC
- Honeywell systems can be integrated - ESSER, Gent, Notifier, XTRALIS, Galaxy Dimension
- Integration of VAPA-Systems VARIODYN D1
- Integration with Honeywell MAXPRO VMS, Fusion 4, HRDP, HeiTel, Milestone, Geutebrück and Dallmeier
- Integration of transmission devices DS 6750 (IP/PSTN) or DS 7700 (IP/ISDN) for direct connection to external systems
- Integration of IQVisitor for the management of visitor IDs in conjunction with IQMA
- Distance-time calculations in combination with IQMA
- Enhanced reporting and logging - generation of reports directly from Facility Manager, unlimited report period by back-up functionality as well as export and import of reports
- Compatible with 64 bit operating systems:
 - Windows Server 2008 (Foundation-Version not available)
 - Windows Server 2008 R2
 - Windows 7 (Home Edition not available)
 - Windows 8/8.1 (without RT)
 - Windows Server 2012 R2 (Foundation-Version not available)
 - Windows 10
- Notification module with the SMS, E-Mail, Voice Mail and Fax support
- ESPA 4.4.4 interface available
- High security failover functionality built in, with multiple redundancy
 - 2nd PC with identical data in the network
 - 2 transmission paths
 - hot-standby redundancy
- Connection possibilities via open interfaces
 - OPC-Server / Client
 - BACnet-Server / Client
 - Facility Manager SDK
- Connection via Ethernet (TCP/IP) e.g. VdS IP network
- Connection to EIB and Modbus possible

Note:

To use specific features, necessary options need to be ordered

Pro-Watch Facility Manager

CONNECTION OF DIFFERENT SYSTEMS IN THE BUILDING AND ALARM MANAGEMENT

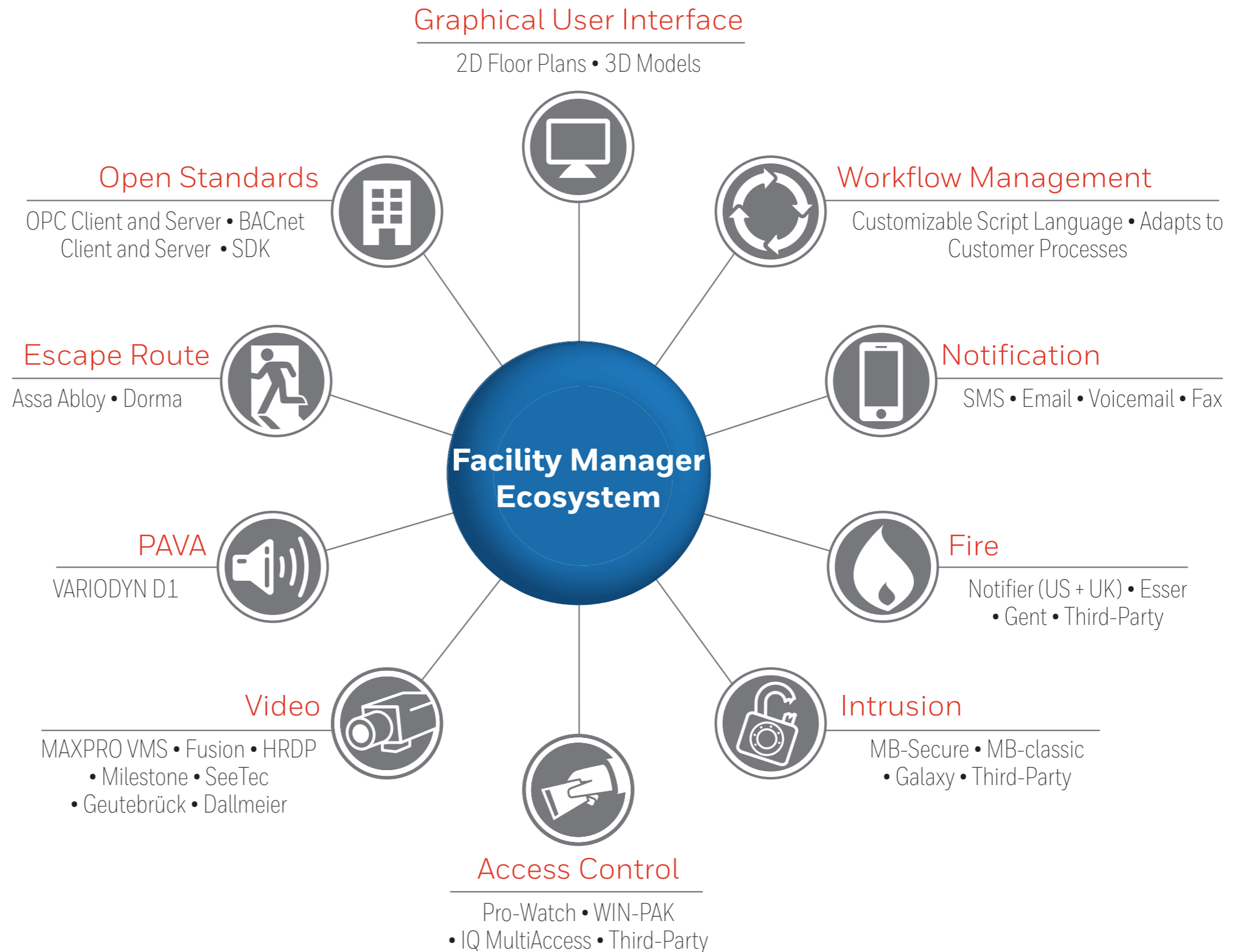
Integrated systems offer many synergies:

You need less material, reduced installation time and they are easier to maintain. Therefore, they are standard in modern building technology.

Each system speaks its own language, has its own requirements and requires certain knowledge of the user. The all-encompassing, superior alarm management system Facility Manager understands and translates the information from all different types of systems.

It combines information under a common user interface and messages from the following systems:

- Fire and Intrusion
- Access Control
- Video Surveillance
- Building Automation
- Escape Route
- PAVA
- Building Management Systems (OPC or BACnet interfaces)



ORDERING INFORMATION

FACILITY MANAGER

WM1001 Facility Manager installation medium

BASE LICENSES FACILITY MANAGER

PWFM Pro-Watch Facility Manager incl. 2000 datapoints, Pro-Watch, Galaxy and MaxPro VMS option

UPGRADE PACKAGE FACILITY MANAGER TO NEWEST VERSION

WM2310 Upgrade including 2.500 data points
WM2320 Upgrade including 10.000 data points
WM2330 Upgrade including 20.000 data points
WM2340 Upgrade including 50.000 data points

DATA POINT EXTENTIONS FOR BASE PACKAGE

WM2110 Additional 500 data points
WM2120 Additional 2.500 data points
WM2130 Additional 5.000 data points
WM2140 Additional 10.000 data points

CLIENT LICENSES

WM2200 Facility Manager client - single license
WM2210 Facility Manager client - license package, 5 pcs.
WM2220 Facility Manager client - license package, 10 pcs.
WM2230 Facility Manager client - license package, 25 pcs.

OPTIONS

OPTIONS

WM3010 Intrusion MB series
WM3110 Fire system Esser
WM3120 Fire system Gent
WM3130 Fire system Notifier
WM3140 VARIODYN D1
WM3200 Access Control IQ MultiAccess
WM3202 Access Control WIN-PAK
WM3220 DS6750/DS7700
WM3230 Nurse call
WM3240 DTS System
WM3250 Escape Route
WM3260 CMSI
WM3270 DEZ 9000
WM3280 HeiTel Video
WM3510 Geutebrück Video
WM3520 Dallmeier Video
WM3530 SeeTec Video
WM3540 Milestone Video
WM3550 Legacy Video systems
WM4010 Redundancy
WM4030 Multi Monitor

WM4040 Auto-CAD®
WM4110 3D Integration
WM4120 Notification
WM4130 Escalation

OPC AND BACNET

WM5100 Facility Manager OPC server
WM5200 Facility Manager OPC client
WM5300 OPC/BACnet 500 tags
WM5600 Facility Manager BACnet server
WM5700 Facility Manager BACnet client
WM5800 Software universal gateway for PC
WM6001 Facility Manager SDK

WINMAG DEVELOPER KIT

WM6001 Facility Manager option SDK
WM6002 Developer package Facility Manager

Further information

<http://www.honeywellintegrated.com/>

Honeywell Security and Fire

Böblinger Str. 17
71101 Schönaich
Germany

Emaar Business Park, Building No. 2,
2nd Floor, Office 201
Sheikh Zayed Road
Post Office Box 232362
Dubai
United Arab Emirates

www.honeywell.com

Subject to change without notice.

HSCI-PWFacilityManagerEN(0917)DS-E
© 2017 Honeywell International Inc.

Honeywell