

## H4D2F1X

### equiP® SERIES 1080P MFZ LENS TRUE DAY/NIGHT H.264 RUGGED INDOOR/OUTDOOR MINIDOME IP CAMERA

Honeywell's latest addition to the equiP® Series of IP-based products, the H4D2F1X is a high definition, True Day/Night rugged indoor/outdoor fixed mini-dome network camera. This ultra compact and IK10 rated vandal-resistant camera provides extremely crisp images at minimal bandwidth. The H4D2F1X provides 1080p (1920 x 1080) resolution at full frame rate. Progressive scan technology and 2D edge enhancement provide outstanding clarity and definition. Digital Noise Reduction results in significant storage savings without sacrificing image quality in low light. The 1/2.7" progressive scan CMOS sensor offers the latest in digital video surveillance technology with accurate colour rendition through a wide variety of lighting conditions. The H4D2F1X also supports the ONVIF specification for interoperability between network video products.

The H4D2F1X integrates a camera and lens in a ultra compact, single piece, tamper-proof unit for fast and easy installation in any application. The camera comes complete with surface and flush mounting options. Wall and pendant mount kits are also available.

In addition to the low light colour performance, the camera will automatically switch to black and white. In this mode, lighting can be complemented with infrared for discreet/covert low light surveillance with exceptional monochrome images.

A 3-D axis gimbal capable of 360° of pan, 180° of tilt and 360° of horizontal rotation simplifies mechanical camera adjustment. The Motorized Focus and Zoom (MFZ) lens allows the field of view to be adjusted to suit the scene requirements.

A powerful and intuitive web client allows fine tuning of the camera and the auto iris levels. This can also be performed from most NVR setup utilities.

The H4D2F1X supports dual video streams and multiple compression formats with rates up to 25 frames per second (30 fps for NTSC systems). The compression parameters for the two video streams are independently configurable. The primary stream is dedicated to H.264. The secondary stream can be configured for H.264 or MJPEG. The H4D2F1X features analogue video out for aiming and focusing during setup.

With built-in low current Power over Ethernet (IEEE 802.3af), power is supplied to the camera using standard network cabling, eliminating the need for a separate power supply and associated wiring. In situations where PoE support does not exist, the unit can also be powered directly from 24 VAC.

#### Market Opportunities

The H4D2F1X is perfect for installations where excellent picture clarity at minimal bandwidth is required. At three times the resolution of standard analogue cameras, yet with similar bandwidth requirements, the H4D2F1X can be retrofitted on many existing NVR installations without requiring additional storage. Its discreet, vandal-resistant (IK10 rating), outdoor design provides maximum protection against dust, dirt and water, and provides optimum performance for both indoor and outdoor applications.

#### Features

- Outstanding image quality, 1080p (1920 x 1080) resolution
- 25 fps (30 fps for NTSC) progressive scan
- True Day/Night, 3-9 mm MFZ lens with removable IR cut filter
- Camera tamper detection
- Video motion detection
- NTP time synchronisation support
- Wall and pendant mount kit available
- ONVIF support
- Dual digital video streams, independently configurable, H.264 and/or H.264/MJPEG
- Remote firmware update
- Supports both dynamic and static IP addresses
- Date/time stamp embedded into video stream
- Multiple browser support
- Includes advanced IP locator software to make system setup easy
- Web server for remote setup of camera video and network parameters
- Choice of 24 VAC or PoE IEEE 802.3af power inputs
- Supports input and output alarm contacts
- Supports bidirectional audio
- Rugged polycarbonate dome
- IP66
- Vandal resistant IK10 rating



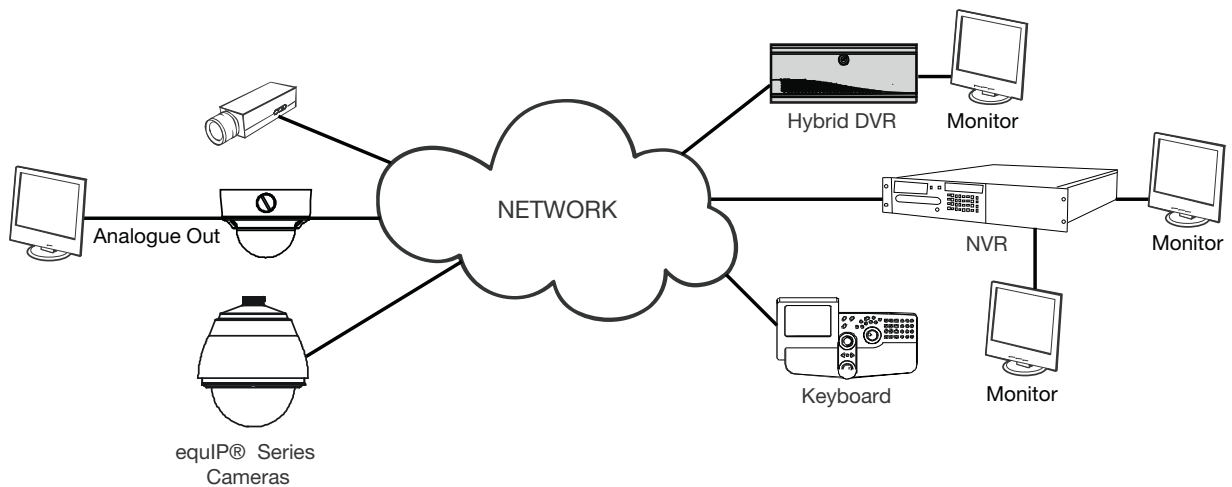
# H4D2F1X

## SPECIFICATIONS

Like all cameras in the equiP IP Series of IP-based products, the H4D2F1X network camera uses Honeywell technology for camera video motion detection, tamper detection, remote firmware updating and for secure storage of all camera settings. Video motion detection recognises object motion within the field of view; then a simple on-screen notification alerts the user. Camera tamper detection notifies the user when a camera's field of view is altered, blinded or blurred. This ensures the video's integrity and alerts the customer to either a live event or a system problem that is causing disruption to the video stream. Honeywell's technology also allows users to remotely upload firmware to the camera. Setup is quick and easy and can be customised through a web client or from an NVR. The built-in web server provides password protected access to the camera's video and network setup.

The screenshot displays the Honeywell H4D2F1X web interface. The top navigation bar includes 'Live' and 'Setup' buttons. The left sidebar lists various setup options: Camera Setup, Compression Setup, Audio Setup, Alarm Setup, Video Analytics, Date and Time, System Setup, and Device Information. The main content area shows a live video feed of a parking lot with several cars. To the right of the video feed are three configuration panels: 'Auto Exposure' (with settings for ALC/ELC, AGC, DSS, Flickerless, and DNR), 'Day/Night' (with settings for Day/Night, Night mode, Detect time, DaytoNight, and NighttoDay), and 'White Balance' (with settings for WB Control, R Gain, and B Gain). At the bottom right of the interface, there are 'Reset to Default' and 'Apply' buttons.

## System Diagram



# H4D2F1X

## SPECIFICATIONS

Operational			
Video Standard	PAL/NTSC		
Scanning System	Progressive scan		
Image Sensor	1/2.7" CMOS		
Number of Pixels (H x V)	1920 x 1080		
Minimum Illumination	0.18 lux colour/0.15 lux BW @ 50 IRE, F1.2 0.11 lux colour/0.09 lux BW @ 30 IRE, F1.2		
Automatic Lens Control	DC Iris Level 1-25		
Video Output (AUX)	1.0 Vp-p @ 75 Ohms		
S/N Ratio	50 dB or more (AGC off)		
Wide Dynamic Range	69dB		
Auto Gain Control	Off/On, selectable (20-40 dB)		
Automatic Electronic Shutter	1/30 - 1/130,000 sec (NTSC) 1/25 - 1/130,000 sec (PAL)		
Lens Type	True Day/Night (TDN), 3-9 mm Motorized Focus and Zoom, F1.2		
Angle of View		Wide	Tele
	Horizontal	117.3°	38.0°
	Vertical	63.0°	21.4°
White Balance	Auto, Manual, WBC Push		
Audio/Two-Way	Line in/out		
Electrical			
Input Voltage	24 VAC, PoE IEEE 802.3af		
Input Range	17-28 VAC		
Surge Suppression	1.5 kW transient		
Power Consumption	5.0 W (max) 24 VAC PoE: PD Type 1 Class 2		
Mechanical			
Dimensions (W x H)	156.0 mm x 117.5 mm		
Weight	1.3 kg camera only		
Construction	Housing: Die Cast Aluminium Finish: Cool Grey Powder Coat Dome: Polycarbonate		
Connector	Video Output (AUX): 2-pin Molex connector Power Input: Removable screw block Network: RJ45 connector Alarm I/O: Removable screw block Audio In: Removable screw block Audio Out: Removable screw block		

Environmental				
Temperature	Operating: -20°C to 50°C Storage: -40°C to 70°C			
Relative Humidity	0% to 85%, non-condensing			
Rating	IP66			
Vandal Resistant	IK10 rating			
IP Specifications				
Video Compression	Dual stream H.264 and MJPEG			
Primary Stream Resolution	Bitrate H.264 (Typical)*	Frame Rate	Storage/Day (GB)	
	1920 x 1080	3.0 Mbps	25/30	31.6
	1280 x 720	1.4 Mbps	25/30	14.8
	800 x 450	0.75 Mbps	25/30	7.91
	640 x 360	0.4 Mbps	25/30	4.22
320 x 180	0.2 Mbps	25/30	2.11	
Frame Rate PAL/NTSC	Up to 25/30 fps video in all resolutions			
Video Streaming	Dual streaming: H.264 and MJPEG Controllable frame rate and bandwidth Constant or variable bit rate			
Security	Multiple user access levels with password protection			
Video Access from Web Browser	Full control of all camera settings available to administrator			
Minimum Web Browsing Requirements	Pentium IV CPU 3.1 GHz or faster 1 GB RAM (32-bit) or 2 GB RAM (64-bit) Windows XP® SP3, Windows 2003 Server R2 (32-bit), Windows 7 (32-/64-bit), Windows Vista SP1, Windows 2008 R2 (64-bit) Internet Explorer 8 or 9 Mozilla Firefox® and Google Chrome			
Installation and Management Maintenance	Honeywell IP Utility software identifies the IP address, discovers cameras, supports firmware upgrades			
Supported Protocols	HTTP, TCP, RTSP, RTP, UDP, ARP, DNS, NTP, RTCP, FTP, ICMP, DHCP, Bonjour, IGMP, SSH			
Standards	ONVIF support			
Regulatory				
Emissions	FCC, CE (EN55022)			
Immunity	CE (EN50130-4)			
Safety	EU: EN60950-1			

\*Actual bitrate is scene and motion dependent with H.264 stream.

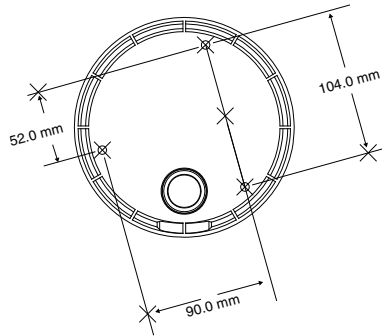
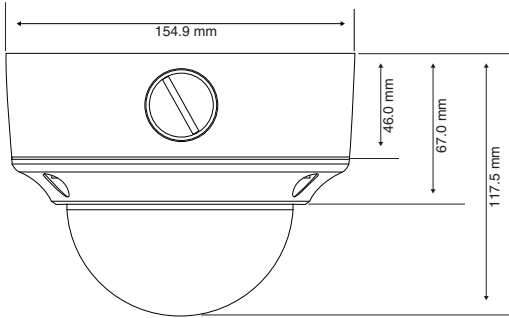
# H4D2F1X

## SPECIFICATIONS

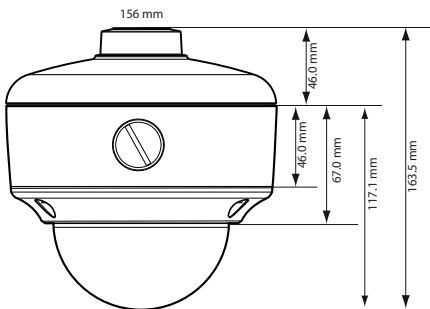
System Integration
<b>Open IP Integration</b>
ONVIF support and open API for software integration. Refer to <a href="http://www.onvif.org">www.onvif.org</a> for the ONVIF specification and the Honeywell Open Technology Alliance <a href="http://www.honeywell.com/security/hota">http://www.honeywell.com/security/hota</a> to learn more about our open and integrated solutions.

Accessories	
Housing and Mounts	
HD4CHIP-PK	Pendant Mount Bracket
HD4CHIP-WK	Wall Mount Bracket

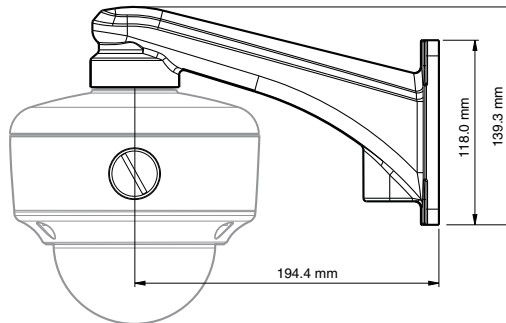
### H4D2F1X Dimensions



### HD4CHIP-PK Pendant Mount



### HD4CHIP-WK Wall Mount



Ordering	
H4D2F1X	Network TDN Rugged Minidome Camera, 1/2.7" Progressive Scan, CMOS, 1080p Resolution, 3-9 mm MFZ Lens, 24 V AC or PoE IEEE 802.3af, H.264, PAL

**NOTE:** Honeywell reserves the right, without notification, to make changes in product design or specifications.



### For additional information,

please visit [www.honeywell.com/security/uk](http://www.honeywell.com/security/uk)

### Honeywell Security Group

Aston Fields Road  
 Whitehouse Industrial Estate  
 Runcorn  
 Cheshire  
 WA7 3DL  
 Tel: 08448 000 235  
[www.honeywell.com](http://www.honeywell.com)

HVS-H4D2F1X-03-UK(0613)DS-E  
 May 2013  
 © 2013 Honeywell International Inc.

