

## Pro-Watch® Video Manager

### VIDEO MANAGEMENT SYSTEM

Honeywell's latest innovation in the field of video management and surveillance technology offers integration of legacy analogue video with IP-network cameras and recorders, including advanced video analytics. Users can benefit from using traditional analogue systems and IP-network systems at the same time to ensure maximum use of their initial investments. Additionally, operators can now experience video security with maximum efficiency and minimum effort.

Honeywell's Pro-Watch® Video Manager controls multiple sources of video subsystems in a facility to collect, manage and present video in a clear and concise manner. Pro-Watch® Video Manager intelligently determines the capabilities of each subsystem across various sites, allowing video management of any analogue or digital video device through a unified configuration and viewer. The subsystems can be analogue switchers such as MAXPRO-Net and VideoBloX, and can be connected to analogue monitors and cameras as well as digital devices such as Digital Video Manager (DVM), Enterprise NVR, Rapid Eye™ Multi-Media Series and Fusion.

Pro-Watch® Video Manager's client server is highly scalable so users can easily expand or downsize the video surveillance network as required. Using an open architecture framework, Pro-Watch® Video Manager is able to integrate with existing video infrastructures and a multitude of third-party components available now and in the future. Additionally, Pro-Watch® Video Manager includes integration with Honeywell's Pro-Watch® security management system, Active Alert® and People Counter video analytics, and other Honeywell products and solutions.

### Market Opportunities

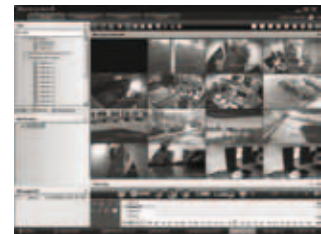
Pro-Watch® Video Manager is ideal for facilities requiring at-risk critical infrastructure protection such as airports, seaports, large multi-site commercial buildings, casinos, and other high-profile facilities. It is the perfect client-server video management solution for locations requiring the use of both digital and analogue technologies.

### Features

- Feature-rich and user-friendly interface to view video and configure devices from a single point
- Integrates with Pro-Watch® to enable superior access control with a wide range of video capabilities
- Role-based operator privileges carry out various surveillance actions
- Redundant server configuration increases system reliability
- Operators can log on using their local language
- Operator messaging feature enables data sharing of incidents among operators
- Auto-discovery of cameras connected to Rapid Eye™, Fusion and Enterprise recorders
- User-defined macros to execute common operations
- Video pursuit made possible by simplifying the process of motion detection through a set of surrounding cameras
- Digital zoom of video from PTZ and fixed cameras
- Ability to investigate events and alarms by simultaneously viewing alarm videos at various stages. For every alarm, users can view the video captured during pre-alarm, on-alarm, post-alarm, and also view live video from the camera which triggered the alarm
- Enriched video viewing experience through the intuitive video rendering engine that optimises CPU utilisation by altering the video frame rate



MAXPRO View 2x2



MAXPRO View 1x5

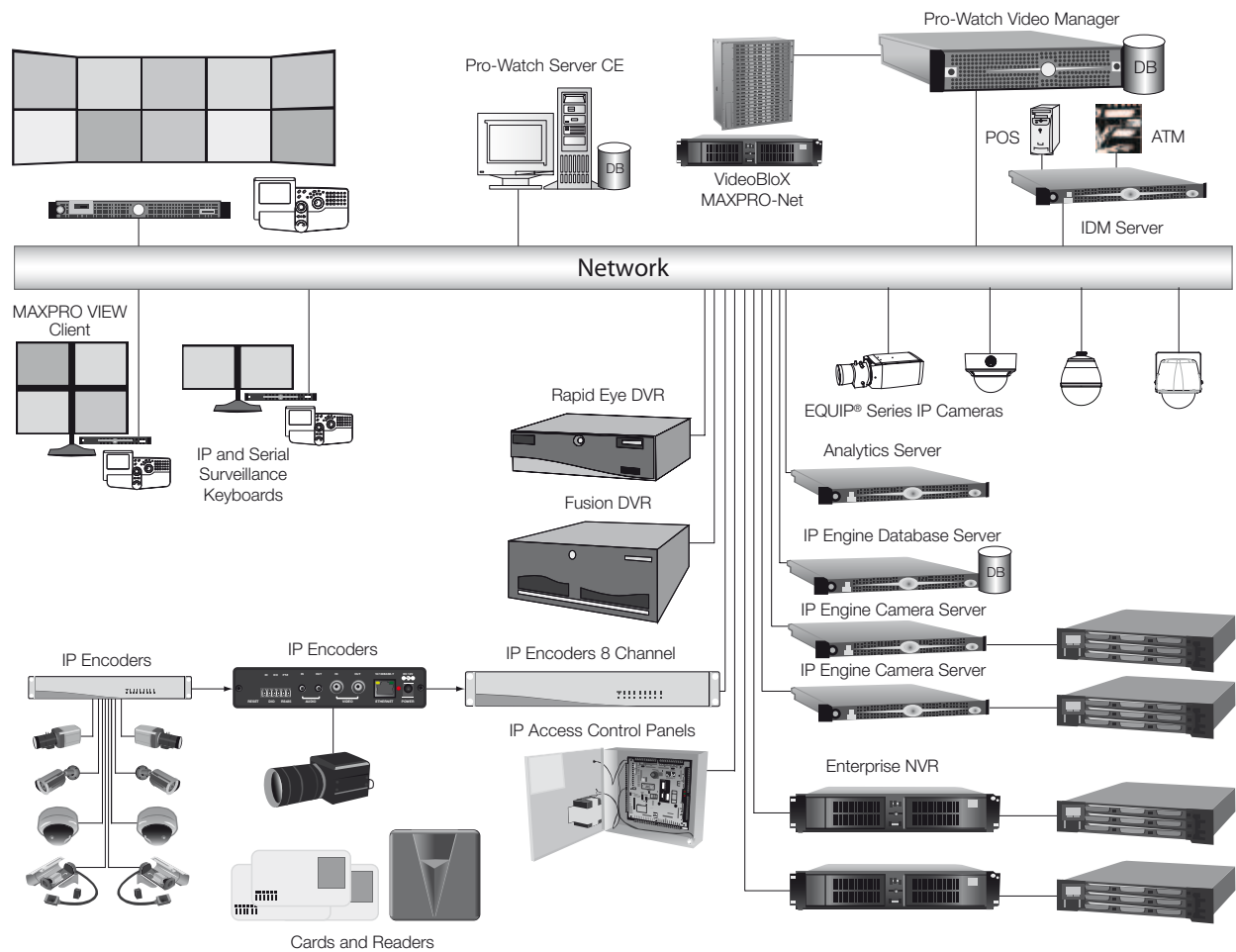
## Pro-Watch® Video Manager

### ARCHITECTURE

Pro-Watch® Video Manager is based on client-server architecture for maximum flexibility, customisation and integration and offers one-click migration support from analogue matrix systems. The Pro-Watch® Video Manager client enables the monitoring of sites and the configuration of video devices such as cameras, monitors, keyboards, etc. The Pro-Watch® Video Manager server consists of the Pro-Watch® Video Manager framework controller and database, and other core components.

The following diagram illustrates the Pro-Watch® Video Manager architecture and associated components:

### Pro-Watch® Video Manager System Diagram



# Pro-Watch® Video Manager

## TECHNICAL SPECIFICATIONS

Specification for the Pro-Watch® Video Manager Standard Server	
Processor	Dual Core Intel Xeon® 3.0 GHz
Memory	Minimum 4 GB of RAM
Hard Disk	Two separate hard drives or two sets of RAID arrays 10K RPM SATA 150 GB or 10K-15K RPM SAS 146 GB
Secondary Storage	DVD-R drive and a 3.5" 1.44 MB floppy disk drive
NIC	1 Gigabit network interface card or compatible pair
Keyboard / Mouse	12 function-key keyboard and mouse
Graphics Adapter	Display adapter that supports 32-bit colour or higher
Operating System	Windows Server 2003 R2 (32-bit only)
Monitor Resolution	1280 x1024 pixels; 65K colours non-interlaced

Specification for the MAXPRO VMS Performance Server	
Processor	Quad Core Intel® Xeon® 3.0 GHz
Memory	Minimum 4 GB of RAM
Hard Disk	Two separate hard drives or two sets of RAID arrays 10K RPM SATA 150 GB or 10K-15K RPM SAS 146 GB
Secondary Storage	DVD-R drive and a 3.5" 1.44 MB floppy disk drive
NIC	1 Gigabit network interface card or compatible pair
Keyboard / Mouse	12 function-key keyboard and mouse
Graphics Adapter	Display adapter that supports 32-bit colour or higher
Operating System	Windows Server 2003 R2 (32-bit only)
Monitor Resolution	1280 x1024 pixels; 65K colours non-interlaced

Specification for the Pro-Watch® Video Manager Standard Client	
Processor	Intel™ Core®2 Duo 3.00GHz Dual Core 3.00GHz/1333MHz/4MB L2
Memory	Minimum 4 GB of RAM
Hard Disk	Single separate hard drive or one RAID array utilising 10K RPM SATA 150 GB or 10K-15K RPM SAS 146 GB
Secondary Storage	DVD-RW drive and a 3.5" 1.44 MB floppy disk drive
NIC	1 Gigabit network interface card
Keyboard / Mouse	12 function-key keyboard and mouse
Graphics Adapter	Display adapter - Direct X 9 compatible 128 MB per monitor or greater
Operating System	Microsoft® Windows XP Professional SP2 (32-bit only)
Monitor Resolution	1280x1024 pixels; 65K colours non-interlaced

Specification for the Pro-Watch® Video Manager Performance Client	
Processor	Intel™ Core®2 Extreme 3.00GHz Quad Core 3.00GHz/1333MHz/12MB
Memory	Minimum 4 GB of RAM
Hard Disk	Single separate hard drive or one RAID array utilising 10K RPM SATA 150 GB or 10K-15K RPM SAS 146 GB
Secondary Storage	DVD-RW drive and a 3.5" 1.44 MB floppy disk drive
NIC	1 Gigabit network interface card
Keyboard / Mouse	12 function-key keyboard and mouse
Graphics Adapter	Display adapter - Direct X 9 compatible 128 MB per monitor or greater
Operating System	Microsoft® Windows XP Professional SP2 (32-bit only)
Monitor Resolution	1280x1024 pixels; 65K colours non-interlaced

# Pro-Watch® Video Manager

## ORDERING INFORMATION

<b>Pro-Watch® Video Manager - Part Numbers and Licensing</b>			
<b>Pro-Watch® Video Manager Corporate Edition</b>			
HNMSWVMS	Base Software includes: MAXPRO VMS, SQL 2005 Express, Includes Licenses for One (1) MAXPRO VIEW Client, with 64 Channels interface to, Rapid Eye DVR, Fusion DVR, DVM R210 (Digital Video Manager) / IP Engine, Enterprise NVR, MAXPRO-Net Series Analog Matrix Switch		
HNMUPGPWCE	Upgrade to Pro-Watch® Video Manager CE		
HNMSWVMS	VMS Base Software includes: MAXPRO VMS, SQL 2005 Express, Includes Licenses for One (1) MAXPRO VIEW Client, with 64 Channels interface to Rapid Eye DVR and Fusion DVR, DVM R210 (Digital Video Manager) / IP Engine, Enterprise NVR, MAXPRO-Net Analogue Matrix Switch.		
<b>MAXPRO View Client License - one license per concurrent viewing workstation</b>			
HNMUPGPWCE	Upgrade MAXPRO® VMS to Pro-Watch® Video Manager CE		
HNM64	Additional 64 Base Channels		
HNM128	Additional 128 Base Channels		
HNM256	Additional 256 Base Channels		
HNM512	Additional 512 Base Channels		
<b>Pro-Watch® Video Manager with Active Alert Video Analytics</b>			
HNMHVAB	HVA - Base Package	HNMHVASI	HVA - Smart Impressions
HNMHVAS	HVA - Standard Package	HNMHVAPC	HVA - People Counting
HNMHVAP	HVA - Premium Package		
<b>Pro-Watch® Video Manager Professional Edition</b>			
HNMSWPWDVR	Pro-Watch® Video Manager PE		
MNMSWMMVMS	Base Software includes: MAXPRO VMS Lite, SQL 2005 Express, Includes Licenses for One (1) MAXPRO VIEW Clients, with 64 Channels interface to, Rapid Eye DVR & Fusion DVR, DVM R210 / IP Engine, Enterprise-Net Series Analogue Matrix Switch. Expandable up to a maximum of 3 Clients and 128 Channels		
HNMUGPWPE	Upgrade MAXPRO VMS Lite to Pro-Watch® Video Manager PE		
HNMSWVMSLT	MAXPRO VMS Lite Software includes: MAXPRO VMS Lite, SQL 2005 Express, Includes Licenses for One (1) MAXPRO VIEW Clients, with 64 Channels interface to Rapid Eye DVR and Fusion DVR, DVM R210 / IP Engine, Enterprise NVR, MAXPRO-Net Analogue Matrix Switch. Expandable up to a maximum of 3 Clients and 128 Channels. No third party adapter support.		
HNMUG	Upgrade MAXPRO VMS Lite to MAXPRO VMS		
HNMUGPWPECE	Upgrade Pro-Watch® Video Manager PE to Pro-Watch® Video Manager CE		
HNMUGPWPE	Upgrade MAXPRO VMS Lite to Pro-Watch® Video Manager PE		
HNM64	Additional 64 Honeywell Channels		
<b>Pro-Watch® Video Manager Client Software</b>			
HNMSWCL	VMS Client License		

NOTE: Channel refers to any combination of NVR/DVR or Matrix Input.  
Honeywell reserves the right, without notification, to make changes in product design or specifications.

For additional information,  
please visit [www.honeywellintegrated.eu](http://www.honeywellintegrated.eu)

### Honeywell Security Group

Honeywell Integrated Security  
Charles Avenue  
Burgess Hill  
West Sussex  
RH15 9UF  
Tel: 01444 251180  
[www.honeywell.com](http://www.honeywell.com)

HIS-PWVM-02-EN(0610)DS-C  
June 2010  
© 2010 Honeywell International Inc.

