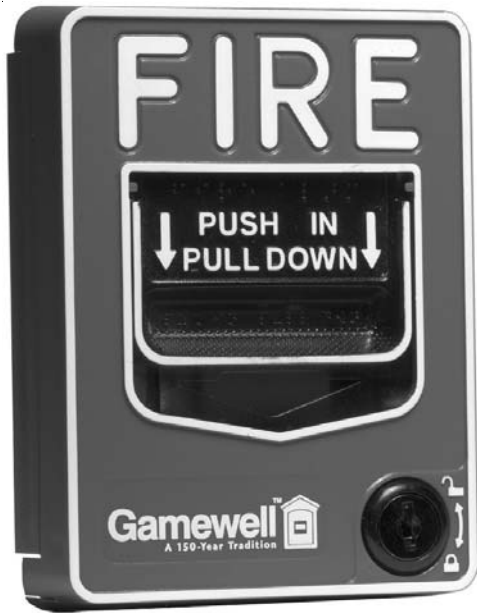


MS95-S Series

Addressable Manual Pull Station with SmartScan™



Description

The Gamewell MS95-S Series is a state-of-the-art, single- or dual-action pull station that includes an addressable interface for any Gamewell 600 Series Fire Alarm Control Panel (FACP) with SmartScan™. Because the MS95-S Series is addressable, the FACP can display the exact location of the activated manual station. This leads fire personnel quickly to the location of the alarm.

Operation

Pushing in, then pulling down on the handle causes it to latch in the down/activated position. Once

latched, the word “ACTIVATED” (in bright yellow) appears at the top of the handle, while a portion of the handle protrudes from the bottom of the station. To reset the station, simply unlock the station with the key and pull the door open. This action resets the handle; closing the door automatically resets the switch. Each manual station, on command from the control panel, sends data to the panel representing the state of the manual switch. Two rotary decimal switches allow address settings.

Construction

Shell, door, and handle are molded of durable LEXAN® (or polycarbonate equivalent) with a textured finish.

Installation

The MS95-SS or MS95-SD will mount semi-flush into a single-gang, double-gang, or standard 4" (10.16 cm) square electrical outlet box, or will surface mount to the Model SB-IO surface backbox. If the MS95-SS or MS95-SD is being semi-flush mounted, then the optional trim ring (BG-TR) may be used. The BG-TR is usually needed for semi-flush mounting with 4" (10.16 cm) or double-gang boxes (not with single-gang boxes).

Features

- Maintenance personnel can open station without causing an alarm condition.
- Built-in LED, which is visible through the handle of the station, flashes in normal operation and latches steady read when in alarm.
- Handle latches in down position and the word “Activated” appears to clearly indicate the station has been operated.
- Captive screw terminals wire-ready for easy connection to SLC loop (accepts up to 12 AWG/3.1 mm² wire).
- Semi-flush, mounts to a standard single gang (2.125" [5.3975 cm] minimum depth), double-gang, or 4" (10.16 cm) square electrical box.
- Smooth dual-action design.
- Within ADA 5 lb. pull force.
- Highly visible.
- Attractive shape and textured finish.
- Key reset.
- Includes Braille text on station handle.
- Optional trim ring (BG-TR).
- Meets UL 38, standard for manually actuated signalling boxes.
- Up to 99 MS95-S Series stations per loop on SmartScan™ protocol systems
- Dual-color LED blinks red to indicate normal on SmartScan™ systems.

Listings

Listings and approvals below apply to the basic MS95-S Series pull station. In some cases, certain modules may not be listed by certain approval agencies, or listing may be in process. Consult factory for latest listing status.

- UL Listed: file S281.



Engineer's Specifications

Manual Fire Alarm Stations shall be non-coded, with a key-operated reset lock in order that they may be tested, and so designed that after actual Emergency Operation, they cannot be restored to normal except by use of a key. An operated station shall automatically condition itself so as to be visually detected as activated. Manual stations shall be constructed of red-colored LEXAN® (or polycarbonate equivalent) with clearly visible operating instructions provided on the cover. The word **FIRE** shall appear on the front of the stations in white letters, 1.00 inches (25.4 mm) or larger. Stations shall be suitable for surface mounting on matching backbox SB-I/O; or semi-flush mounting on a standard single-gang, double-gang, or 4" (10.16 cm) square electrical box, and shall be installed within the limits defined by the Americans with Disabilities Act (ADA) or per national/local requirements. Manual Stations shall be Underwriters Laboratories listed.

Manual stations shall connect with two wires to one of the control panel SLC loops. The manual station shall, on command from the control panel, send data to the panel representing the state of the manual switch. Manual stations shall provide address setting by use of rotary decimal switches.

The loop poll LED shall be clearly visible through the front of the station. The LED shall flash while in the normal condition, and stay steadily illuminated when in alarm.

Ordering Information

MS95-SS	Smart.Scan™ pull station, single-action with key.
MS95-SD	Smart.Scan™ pull station, dual-action with key.
SB- I/O	Surface box.
BG-TR	Optional trim ring

Specifications

Nominal Operating Voltage

15 – 32 VDC.

Average Operating Current

375 μ A maximum.

EOL Resistance

47K ohms.

Maximum IDC Wiring Resistance

1,500 ohms.

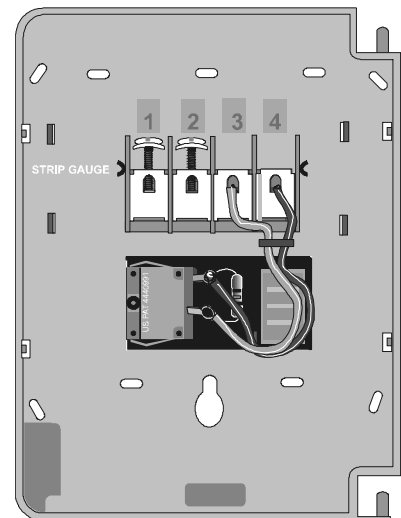
Temperature Range

32°F to 120°F (0°C to 49°C).

Humidity

10 to 93% noncondensing.

Wiring Diagram



Gamewell™
A 150-Year Tradition

A Honeywell Company

Gamewell-FCI
12 Clintonville Road
Northford, CT 06472-1610
Phone: 203-484-7161
Fax: 203-484-7118
www.gamewell-fci.com

A Honeywell Company
© 2006 Gamewell-FCI

Specifications and wiring information are provided for information only and are believed to be accurate. Gamewell-FCI assumes no responsibility for their use. Data and design are subject to change without notice. Installation and wiring instructions shipped with the product shall always be used for actual installation. For more information, contact Gamewell-FCI.