

MMF-300-10(A)

Ten-Input Monitor Module



Addressable Devices

General

The **MMF-300-10 ten-input monitor module** is an interface between a control panel and normally open contact devices in intelligent alarm systems such as pull stations, security contacts, or flow switches.

The first address on the MMF-300-10 is set from 01 to 150 and the remaining modules are automatically assigned to the next nine higher addresses. Provisions are included for disabling a maximum of two unused addresses.

The supervised state (normal, open, or short) of the monitored device is sent back to the panel. A common SLC input is used for all modules, and the initiating device loops share a common supervisory supply and ground — otherwise each monitor operates independently from the others.

Each MMF-300-10 module has panel-controlled green LED indicators. The panel can cause the LEDs to blink, latch on, or latch off.

NOTE: Unless otherwise specified, the term *MMF-300-10* is used in this data sheet to refer to both the MMF-300-10 and the MMF-300-10A (ULC-listed version).

Features

- Listed to UL Standard 864, 9th edition.
- Ten addressable Class B or five addressable Class A initiating device circuits.
- Removable 12 AWG (3.25 mm²) to 18 AWG (0.9 mm²) plug-in terminal blocks.
- Status indicators for each point.
- Unused addresses may be disabled.
- Rotary address switches.
- Class A or Class B operation.
- Flexible mounting options.
- Mounting hardware included.

Specifications

Standby current: 3.5 mA (SLC current draw with all addresses used; if some addresses are disabled, the standby current decreases).

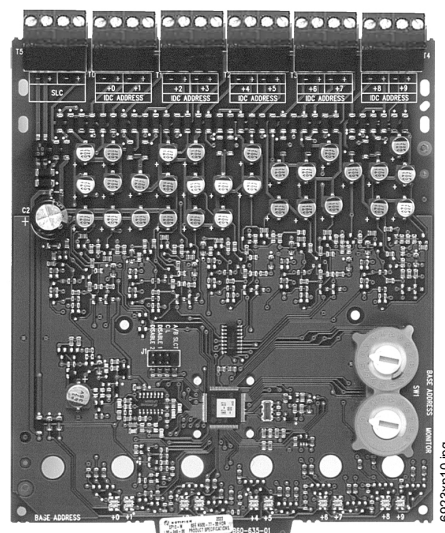
Alarm current: 55 mA (assumes all ten LEDs solid ON).

Temperature range: 32°F to 120°F (0°C to 49°C) for UL applications; -10°C to +55°C for EN54 applications.

Humidity: 10% to 85% noncondensing for UL applications; 10% to 93% noncondensing for EN54 applications.

Dimensions: 6.8" (172.72 mm) high x 5.8" (147.32 mm) wide x 1.25" (31.75 mm) deep.

Shipping weight: 0.76 lb. (0.345 kg) including packaging.



Mounting options:

- CHS-6 chassis: Up to 6 modules.
- BB-6F cabinet: Up to 6 modules.
- BB-2F cabinet: One or two modules.

Wire gauge: 12 AWG (3.25 mm²) to 18 AWG (0.9 mm²).

Power-limited circuits must employ type FPL, FPLR, or FPLP cable as required by Article 760 of the NEC.

MMF-300-10 is shipped in Class B position; remove shunt for Class A operation.

Maximum SLC wiring resistance: 40 or 50 ohms, panel dependent.

Maximum IDC wiring resistance: 1500 ohms.

Maximum IDC voltage: 10.2 VDC.

Maximum IDC current: 240 μ A.

Agency Listings and Approvals

The listings and approvals below apply to the MMF-300-10(A) Ten-Input Monitor Module. In some cases, certain modules or applications may not be listed by certain approval agencies, or listing may be in process. Consult factory for latest listing status.

- **UL Listed:** S2424
- **ULC Listed:** S2424
- **CSFM approved:** 7300-0075:205
- **FM approved**
- **MEA approved:** 55-02-E

Product Line Information

MMF-300-10: Ten-input monitor module.

MMF-300-10A: Same as above with ULC Listing.

BB-2F: Optional cabinet for one or two modules. **Dimensions, DOOR:** 9.234" (23.454 cm) wide (9.484" [24.089 cm] including hinges), x 12.218" (31.0337 cm) high, x 0.672" (1.7068 cm) deep; **BACKBOX:** 9.0" (22.860 cm) wide (9.25" [23.495 cm] including hinges), x 12.0" (30.480 cm) high x 2.75" (6.985 cm); **CHASSIS (installed):** 7.150" (18.161 cm) wide overall x 7.312" (18.5725 cm) high interior overall x 2.156" (5.4762 cm) deep overall.

BB-6F: Optional cabinet for up to six modules mounted on CHS-6 chassis (*below*). **Dimensions, DOOR:** 24.0" (60.96 cm) wide x 12.632" (32.0852 cm) high, x 1.25" (3.175 cm) deep, hinged at bottom; **BACKBOX:** 24.0" (60.96 cm) wide x 12.550" (31.877 cm) high x 5.218" (13.2537 cm) deep.

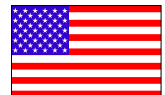
CHS-6: Chassis, mounts up to six modules in BB-6F.

FireLite® Alarms® and System Sensor® are registered trademarks of Honeywell International Inc. Microsoft® and Windows® are registered trademarks of the Microsoft Corporation.
©2009 by Honeywell International Inc. All rights reserved. Unauthorized use of this document is strictly prohibited.



This document is not intended to be used for installation purposes.
We try to keep our product information up-to-date and accurate.
We cannot cover all specific applications or anticipate all requirements.
All specifications are subject to change without notice.

For more information, contact Fire•Lite Alarms. Phone: (800) 627-3473, FAX: (877) 699-4105.
www.firelite.com



Made in the U.S. A.