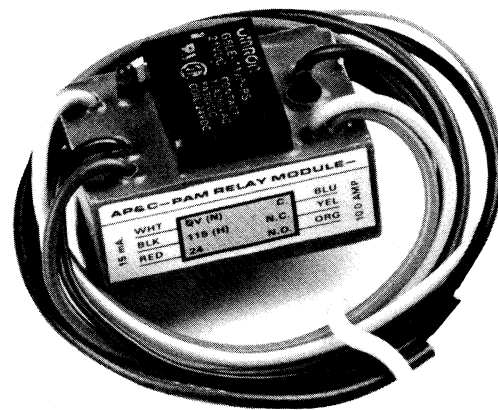
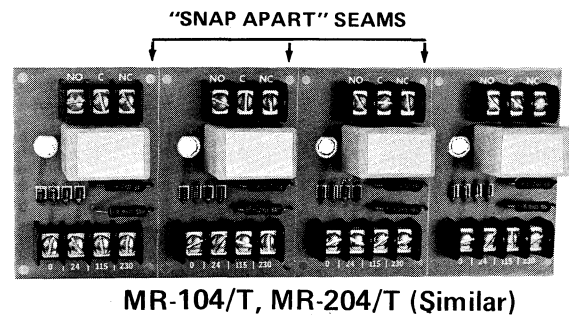
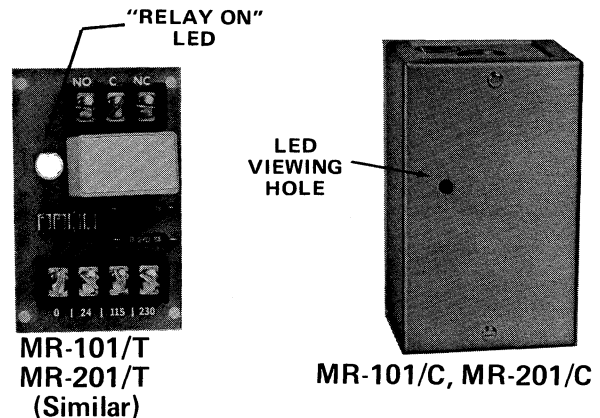


Multi-Voltage Control Relays

Important Features

- Red LED annunciation when relay coil is energized
- Available in dust proof metal enclosure with LED viewing port
- Track mounting hardware to facilitate ease of installation
- Suitable for use with Fire Alarm, HVAC, Energy Management and Lighting Control Systems
- UL Listed as Control Unit Accessory



Description

The MR Series of multi-voltage control relays offer SPDT or DPDT 10 amp contacts which may be operated by one of four input control voltages. A single relay may be energized from a voltage source of 24 VDC, 24 VAC, 115 VAC or 230 VAC by wiring to appropriate input terminals.

Each relay position contains a red LED which indicates that the relay coil is energized. The relays are available in a 4 module assembly and may be snapped apart and used independently.

The PAM-1 Relay is an encapsulated multi-voltage device providing 10 amp form "C" contacts. The relay may be energized by one of three voltages: 24 VDC, 24 VAC, or 115 VAC. The relay is supplied with a red LED which indicates that the coil is energized.

Standard Application

The MR Series and PAM-1 are ideally suited where remote relays are required for control, general purpose switching or status feedback. They are suitable for use

Actual Size

in Fire Alarm, Security, HVAC, Energy Management, or Lighting Control applications.

Installation

The MR Series of relays may be mounted in a control panel or may be supplied with either a 4 position or single position metal enclosure.

The PAM-1 may be mounted by using the double sided adhesive tape, the self-drilling screw or loosely taped in a backbox.

Product Specifications

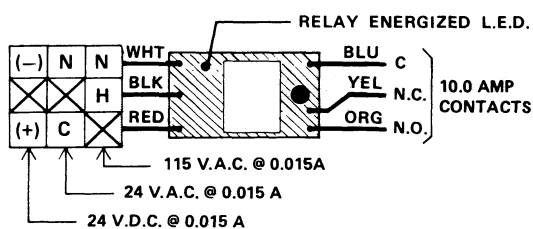
Power Requirements:	MR-101 - 0.015 amps per position @ 24 VDC, 24 VAC, 115 VAC, 230 VAC
	MR-210 - 0.035 amps per position @ 24 VDC, 24 VAC, 115 VAC, 230 VAC
	PAM-1 - 0.015 amps per position @ 24 VDC, 24 VAC, 115 VAC
Contact Rating:	10.0 amps @ 115 VAC
Ambient Temperature:	-50°C. to +85°C.
Dimensions:	MR-101/T, MR-201/T - 3.0" H x 2.125" W x 1.5" D
	MR-104/T, MR-204/T - 3.0" H x 8.5" W x 1.5" D
	MR-101/C, MR-201/C - 6.125" H x 3.25" W x 2.5" D
	MR-104/C, MR-204/C - 6.125" H x 9.5" W x 2.5" D
	PAM-1 - 1 1.5" H x 1" W x 5.75" D with 12" wire leads, 18 ga.
Approvals:	UL Listed

Ordering Information

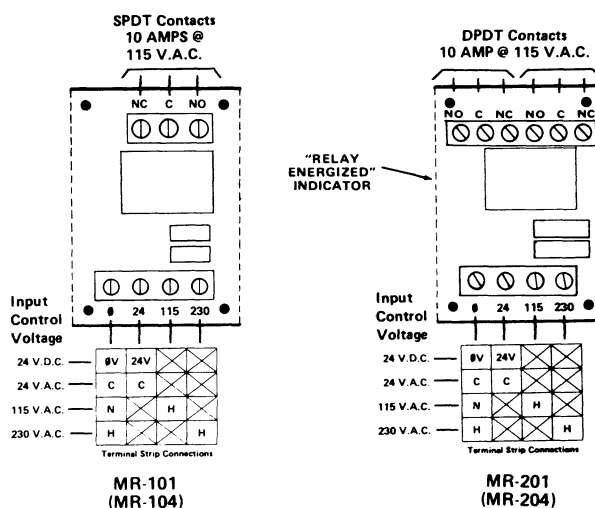
Supplied	Quantity	Part Number	Description
<input type="checkbox"/>	_____	MR-101/T	Single SPDT relay with LED and track mounting hardware
<input type="checkbox"/>	_____	MR-101/C	Single SPDT relay with LED mounted in metal enclosure
<input type="checkbox"/>	_____	MR-104/T	Four position SPDT relay with LED's and track mounting hardware
<input type="checkbox"/>	_____	MR-104/C	Four position SPDT relay with LED's mounted in metal enclosure
<input type="checkbox"/>	_____	MR-201/T	Single DPDT relay with LED and track mounting hardware
<input type="checkbox"/>	_____	MR-201/C	Single DPDT relay with LED mounted in metal enclosure
<input type="checkbox"/>	_____	MR-204/T	Four position DPDT relay with LED's mounted in track mounted hardware
<input type="checkbox"/>	_____	MR-204/C	Four position DPDT relay with LED's mounted in metal enclosure
<input type="checkbox"/>	_____	PAM-1	Single SPDT relay with LED, double sided adhesive, mounting screw, 12" leads and 6 wire nuts

Wiring Diagrams

PAM-1



MR Series (Typical one module position)



60 Pleasant Street
 Ashland, Massachusetts 01721
 (508) 231-1400 FAX (508) 231-0900

Data and design subject to change. Supply subject to availability GW 3/98 (revised) Printed in U.S.A.

UL Listed

Specifications and wiring information are provided for information only and are believed to be accurate. However, Gamewell assumes no responsibility for their use. Specifications are subject to change without notice; installation and wiring instructions shipped with the product should always be used for actual installation.