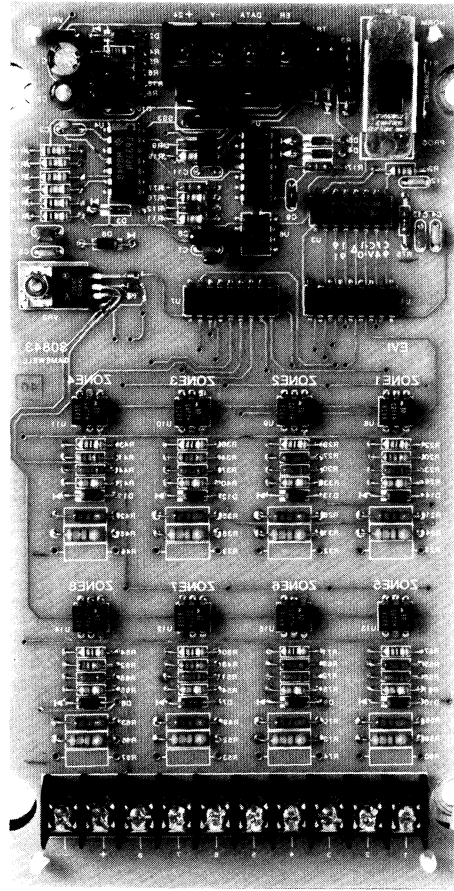


Output Controller Module

Features

- 8 Control-by-Event Outputs
- INS-2 Compatible
- Automatic activation of FlexAlert signal, and audio circuits
- Relay driver or lamp driver
- Field programmable
- U.L. Listed



Description

The Gamewell Output Controller Module is designed for use with the Identify Network System, INS-2 Control Panel. This Addressable Output Controller module provides the hardware and electronic interface necessary to perform 8 control-by-event functions or activate alarm zone inputs to the FlexAlert Emergency Voice Communications system. This module connects to the INS-2 network communications line, providing eight programmable control outputs which may be used for automatic activation of FlexAlert signal, and audio circuits.

These eight 80mA maximum outputs may also be used for driving relays, lighting LED's, or Incandescent Lamps.

Operation

The INS-2 Addressable Output Controller Module (OCM) connects directly to the INS-2 Network Communication Line and may be programmed to be automatically activated by any alarm initiating device in the system, and/or a FlexAlert Vs Circuit Selector Switch. The OCM may be mounted in the FlexAlert cabinet, requiring a single module space. When the controller is activated, it reacts by providing up to eight individual 80mA outputs. These outputs continue as determined by the custom INS-2 program.

Programming

Programming of the 30843 Output Controller must be performed when a new unit is installed onto the INS-2. In order to program an OCM, the INS-2 Control Panel must be placed in the

programming mode and the address will be assigned to the controller that has the Programming Switch activated.

Standard Application

The Output Controller is utilized to activate eight alarm zone inputs to the Gamewell FlexAlert Hardwired or Switched Audio Emergency Voice Communications Systems. The OCM is also utilized in control-by-event for HVAC control, by providing programmable outputs which may activate K relays.

Installation

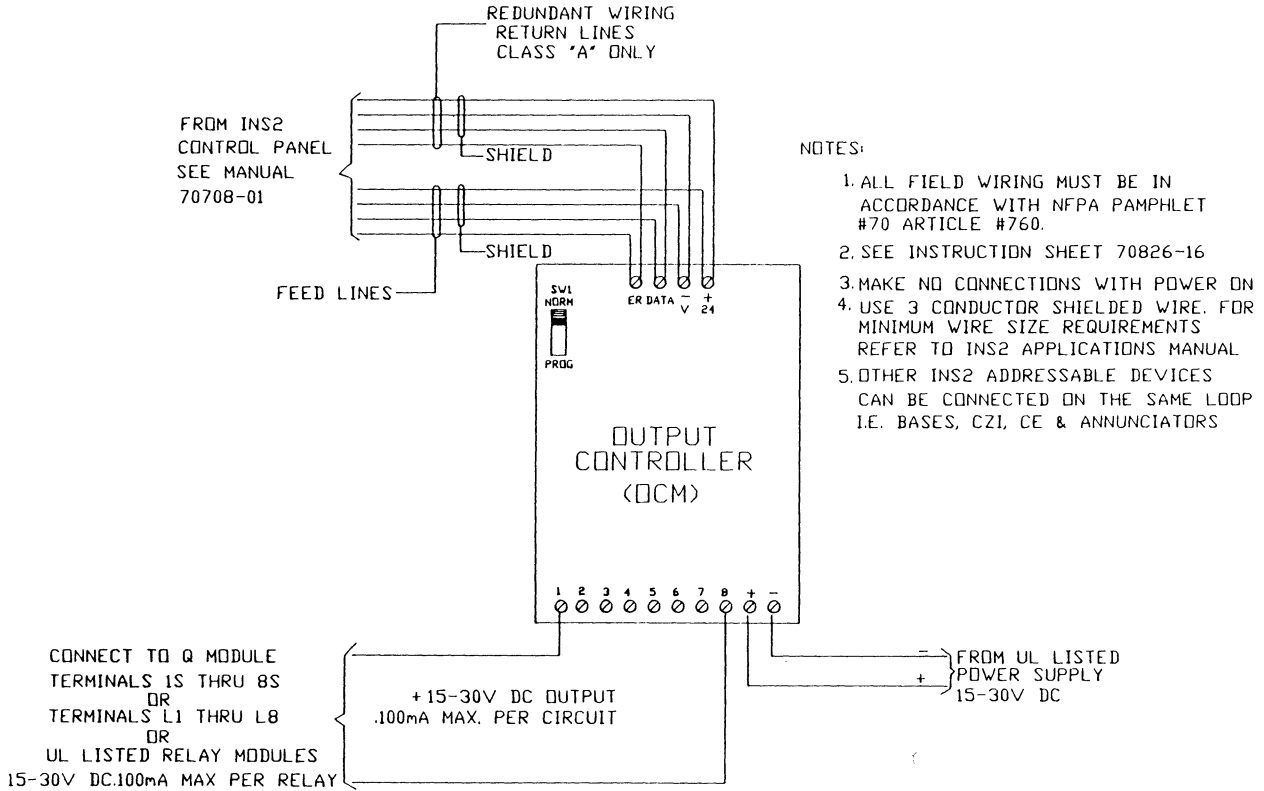
The 30843 INS-2 Output Control Module should be installed in FlexAlarm/Alert cabinetry, using a single module position.

Electrical Characteristics

Operating Voltage: 15-30Vdc
 Output Current: 15-30 Vdc, .100 mA max. per circuit
 Communication Line
 Current: Normal: 2 mA
 Alarm: 16 mA per output

Physical Characteristics

Dimensions: One module space



Ordering Information

Supplied	Part No.	Description
<input type="checkbox"/>	30843	OCM — Output Controller Module (8 inputs/outputs)



Specifications and wiring information are provided for information only and are believed to be accurate. However, Gamewell assumes no responsibility for their use. Specifications are subject to change without notice; installation and wiring instructions shipped with the product should always be used for actual installation.

60 Pleasant Street
 Ashland, Massachusetts 01721
 (508) 231-1400 FAX (508) 231-0000

Data and design subject to change. Supply subject to availability GW 8/98 (revised) Printed in U.S.A.

UL Listed