

Six Fault Isolator Module

ISO-6

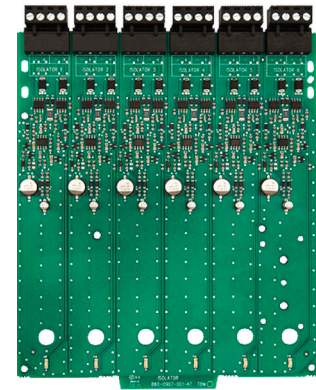
The ISO-6 Six Fault Isolator Module provides six equivalent circuits that will allow a portion of the communications loop to continue operating when a short circuit occurs on that loop.

The ISO-6 Six Fault Isolator Module has an amber LED indicator that will blink in the normal state for each of the six inputs and will latch on during a short circuit condition. The module will automatically restore the communications loop to normal condition when the short circuit is removed.

The ISO-6 Six Isolator Module is an automatic switch that opens when the line voltage drops below four volts. Isolator modules should be spaced between groups of sensors or modules in a loop to protect the rest of the loop. If a short occurs between any two isolators, then both isolators immediately switch to an open circuit state and isolate the devices between them. The remaining units on the loop continue to fully operate.

Applications

The ISO-6 Fault Isolator Modules should be spaced between groups of sensors in an SLC to protect the rest of the loop. Use to isolate short circuit problems within a section of a loop so that other sections can continue to operate normally. The ISO-6 supports a maximum of 25 devices between isolators.



ISO-6

Compatibility

The ISO-6 is compatible with the following Farenhyt Series FACPs:

- IFP-2100 / IFP-2100ECS / RFP-2100
- IFP-2000 / IFP-2000ECS / RPS-2000
- IFP-1000 / IFP-1000ECS
- IFP-300 / IFP-300ECS
- IFP-100 / IFP-100ECS
- IFP-75
- IFP-50

FEATURES & BENEFITS

- Removable 12 to 18 AWG plug-in terminal blocks.
- Individual LED status indicators.
- Six individual, Class B isolator circuits.
- Mount up to two modules in IDP-ACB enclosure (optional).
- Mounting hardware included.
- UL Listed
- CSFM Listed
- FM Approved

ISO-6 Technical Specifications

SPECIFICATIONS

Physical: 6.8"H x 5.8"W x 1.0"D

Shipping Weight: 1.1 lbs (.50g) including pkg.

Mounting Option: IDP-ACB

ELECTRICAL RATINGS

Operating Voltage: 15 to 32VDC

Standby Current: 450 μ A per circuit, 2.7mA all circuits.

Alarm Current Draw: 17mA per circuit in isolation, 102mA with all circuits in isolation.

ENVIRONMENTAL

Operating Temperature: 32°-120°F (0°C – 49°C)

Humidity: 10 to 85% non-condensing)

ORDERING INFORMATION

ISO-6: Six Isolator module

ACCESSORIES

IDP-ACB: Optional cabinet for one or two modules.

Dimensions: 12.5"W x 15.25"H x 3"D (31.8 cm W x 38.7cm H x 7.6 cm D)

For a complete listing of all compliance approvals and certifications, please visit www.farenhyt.com.

Microsoft, Windows, and the Windows Logo are registered trademarks or trademarks of Microsoft Corporation.

Honeywell® and System Sensor® are registered trademarks of and Farenhyt™ is a trademark of Honeywell International, Inc.

This document is not intended to be used for installation purposes. We try to keep our product information up-to-date and accurate. We cannot cover all specific applications or anticipate all requirements. All specifications are subject to change without notice.

For Technical Support, Please call 800-446-6444.

For more information

Learn more about Honeywell's Farenhyt Series and other products available by visiting www.farenhyt.com

Honeywell Security & Fire

12 Clintonville Road
Northford, CT 06472
800-328-0103

Doc 350997 | Rev C | 09/17
© 2017 Honeywell International Inc.

Honeywell
THE POWER OF **CONNECTED**