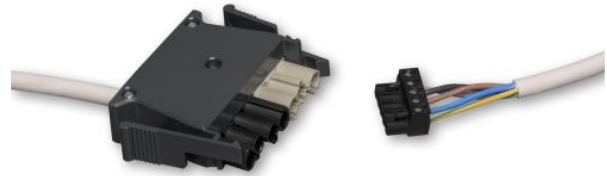


## Connection Leads

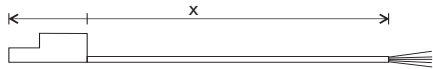
Honeywell's range of modular wiring components enables any luminaire installation to be completed quickly and efficiently. These products are compatible with Honeywell's range of MLS and UltraLite LCM systems.



### Luminaire Leads



Luminaire leads are fitted at one end with an industry-standard 6-pin plug for connection to the CD Box. The other end is supplied stripped, ready for connection to the luminaire. Luminaire extension cables are available to provide longer lengths. Conductor size: 0.75 - 1.0mm<sup>2</sup>.



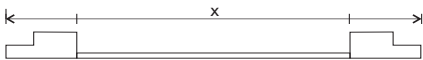
Plug (male)	Lead	Length (x)	Core	Part No	c/w Locking Mechanism for CDW12U5 or UltraLite* LCMs
GST18/6	LSOH	3m	3-core	CPW633	CPWL633
GST18/6	LSOH	5m	3-core	CPW635	CPWL635
GST18/6	LSOH	3m	4-core	CPW643	CPWL643
GST18/6	LSOH	5m	4-core	CPW645	CPWL645
GST18/6	LSOH	3m	5-core	CPW653	CPWL653
GST18/6	LSOH	5m	5-core	CPW655	CPWL655
GST18/6	LSOH	3m	6-core	CPW663	CPWL663
GST18/6	LSOH	5m	6-core	CPW665	CPWL665
GST18/6	LSOH	3m	3-core	CPWEM633	
GST18/6	LSOH	5m	3-core	CPWEM635	

### Plug Only (male)

GST18/6	N/A	N/A	N/A	CPW6	
GST18/6	N/A	N/A	N/A		CPWL6
GST18/6	N/A	N/A	N/A		CPWL6S (Shell Only)
GST18/6	N/A	N/A	N/A	CPW6RED	

### Luminaire Extension Cables

Used in conjunction with luminaire leads to provide longer lengths (i.e. 6m and 8m respectively).



Plug (male to female)	Lead	Length (x)	Core	Ex-Or Part No	c/w Locking Mechanism for CDW12U5 or UltraLite* LCMs
GST18/6	LSF	3m	6-core	CPW663MF	CPWL663MF
GST18/6	LSOH	5m	6-core	CPW665MF	

**Plug only (Wieland Part Nos):** GST18/6 | 34.362.0201.1 (male) | 34.361.0201.1 (female)

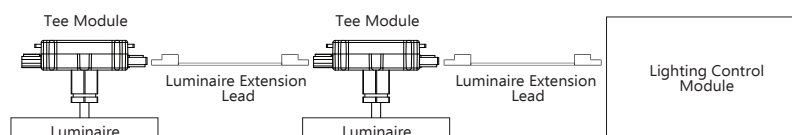
**Plug only (Metway Part Nos):** GST18/6 | 166GST06ASS-003 (male) | 166GBU06ASS-002 (female)

Note: \*UltraLite LCMs = CDW10U2UL, CDW10U2C, CDW6U1UL, CDW4U1UL.

### Tee Module (TPC3006)



For use with MLS Connect Digital and Connect UltraLite Lighting Control Modules, this 6-pole 'tee' module enables pluggable connectivity between components. Used in conjunction with luminaire extension cables (above), it allows luminaires to be daisy-chained for ultimate flexibility and ease of installation. Connectors are fully colour coded and mechanically polarised to prevent mismatching.



**PIR Plugs and Leads for Connect UltraLite LCMs (CDW10U2C, CDW10U2UL, CDW6U1UL & CDW4U1UL)**

The following plugs and leads connect LightSpot HD sensors to UltraLite LCMs (see separate Data Sheet D4142 for full details):

- LSHDSLW753 LightSpot HD Switching Lead, Wieland 7-pin, 5-core, 3 metre
- LSHDSLW755 LightSpot HD Switching Lead, Wieland 7-pin, 5-core, 5 metre
- LSHDDLW753 LightSpot HD Dimming Lead, Wieland 7-pin, 5-core, 3 metre
- LSHDDLW755 LightSpot HD Dimming Lead, Wieland 7-pin, 5-core, 5 metre
- LSHDDSLW763 LightSpot HD Dimming and Switching Lead, Wieland 7-pin, 6-core, 3 metre
- LSHDDSLW765 LightSpot HD Dimming and Switching Lead, Wieland 7-pin, 6-core, 5 metre
- LSHDQBL2210 LightSpot HD QuickLink Bus Lead, 2-pin, 2-core, 10 metre
- DLSDSLW765 DALI Dimming and Switching Lead Wieland 7-pin, 6 core, 5 metre
- MWHDDSLW763 Microwave HD Dimming and Switching Lead, Wieland 7-pin, 6 core 3 metre
- MWHDDSLW765 Microwave HD Dimming and Switching Lead, Wieland 7-pin, 6 core 5 metre
- MWHDSLW753 Microwave HD Switching Lead, Wieland 7-pin, 5 core 3 metre
- MWHDSLW755 Microwave HD Switching Lead, Wieland 7-pin, 5 core 5 metre

**PIR Connectors for UltraLite LCMs**

For the connection of other sensors to the UltraLite LCM, a separate 7-way connector is available:

GST18/7 connector (for sensor) with Locking Mechanism for UltraLite LCMs	CPWL7
GST18/7 shroud only, for use with UltraLite	CPWL7S

**PIR and Detector Patch Leads for MLS Connect Digital Intelligent LCMs (CDW12U5, CDH4U5 & CDH8U5)**



Using standard RJ-type plugs, these leads are supplied pre-wired and serve as an interface between the CD Box and dedicated detectors or between multiple CD Boxes.



Lead length	Lead	Ex-Or Part No	NOTE
5m	PVC	BT5E050GY	Use only leads supplied by Honeywell.
10m	PVC	BT5E100GY	Care must be taken when installing the leads to protect the plug contacts from damage or contamination.

**Ceiling Connector for CDW12U5 or UltraLite\* LCMs**



BESA Box BESA6PSR is a 6-pole ceiling rose designed to provide simple connection of luminaires within fixed wiring installations. Double stacked terminals facilitates multiple wire connections.

Typical applications for this type of connector would be any installation that has fire regulations insisting on mechanical containment of cabling within the building fabric.

Part number **BESA6PSR**.

Red BESA box for emergency luminaires part number **BESA6PSR-RED**



© 2023 Honeywell International Inc. Honeywell reserves the right to revise this publication from time to time and make changes to the content hereof without obligation to notify any person of such revisions or changes.

Honeywell, St Marks Court, North Street Horsham, West Sussex RH12 1BW Tel: +44 (0)1942 719229 Web: [www.buildings.honeywell.com](http://www.buildings.honeywell.com)

EU contact for regulatory questions: PEHA Elektro GmbH & Co. KG Gartenstraße 49, 58511 Lüdenscheid Germany Web: [www.peha.de](http://www.peha.de)