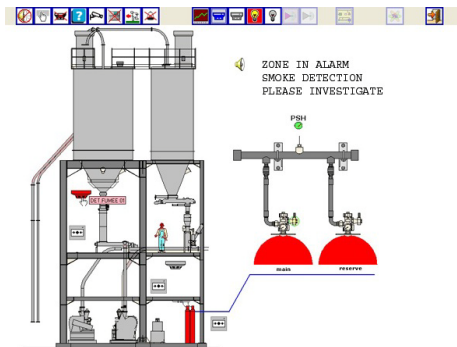




Program Functions		Iride Demo	Iride Base	Iride Video
Connections	USB Dongle:	no	yes	yes
	Connection through serial link		✓	✓
	Connection through LAN (or WAN) Ethernet		✓	✓
	Connection to several panels		✓	✓
Views	Simulation of events to be displayed on graphical maps	✓		
	Visualization of real events on graphical maps		✓	✓
	Summary on the front page of the events and plant status	✓	✓	✓
	Event view of pre-recorded messages for the operator		✓	✓
	On-demand view of analog values of the field devices		✓	✓
	Hierarchical level display of area and zone (optional)		✓	✓
	Graphical map display of video images of cameras			✓
	View events from several panels in the plant		✓	✓
	View the status of the connection among the panels		✓	✓
	Online manual		✓	✓
	Event print		✓	✓
Actions	Allows the acknowledgment of alarms and sirens		✓	✓
	Allows the display of historical events		✓	✓
	Allows the inclusion and exclusion of devices		✓	✓
	Allows control of actuators (lights and sirens) also with macro-commands		✓	✓
Configurations	Configure and save user groups and operators		✓	✓
	Configure and save messages		✓	✓
	Configure and save grouped commands (macro-commands)		✓	✓
	Import, editing and saving of graphics pages		✓	✓
	Edit and save the time slots		✓	✓



Area display with several zones



Message display of a detector in alarm

This document is not intended to be used for installation purposes. We try to keep our product information up-to-date and accurate. We cannot cover all specific applications or anticipate all requirements. All specifications are subject to change without notice.

**Honeywell International Inc.**

Industrial Fire Protection

12 Clintonville Road

Northford, CT 06472-1610

+1 203-484-7161

fax: +1 203-484-7118

www.honeywell.com

Honeywell Industrial Training Center

9401 Bay Area Boulevard #400

Pasadena, TX 77507

+1 713-577-1510

