

ASPIRATING SMOKE DETECTOR- FAASTLT-200 stand alone

DESCRIPTION

The **FAASTLT-200** Aspirating Smoke Detector is designed with the installer and end user in mind. It serves the wide variety of Class C applications where maintenance is difficult, other smoke detection methods are inappropriate or prone to fail due to harsh environments or areas where aesthetics matters. It is also suitable for smaller mission critical applications where very early warning - Class A or B detection is required. **FAASTLT-200** combines proven aspiration detection technologies to deliver reliable smoke detection and efficient installation and maintenance. The device includes high sensitivity fire detection, ultrasonic flow sensors, and internal design features to protect vulnerable components from environmental and human threats. The device is fast to install and easy to commission thanks to PIPE IQ LT pipe design and configuration software which is included as standard. **FAASTLT-200** stand alone devices are available as single channel and dual channel devices, offering flexibility for different detection strategies. A range of customizable settings are geared towards maximizing device performance and meeting different application needs. The detector provides alarm, pre-alarm and fault relays with auxiliary events relay as an option. These can be set as latched or non-latched. To accommodate local installation standards or environments, flow and general fault delays can also be set. Day/Night/Weekend mode enables technicians to pre-set alarm thresholds based on routine changes in the environment's usage.

FEATURES

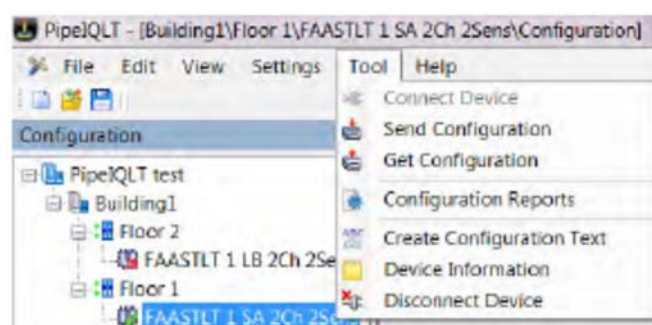
- Configurable sensitivity: 9 levels from 0.06% to 6% obs/m
- Multiple event logging up to 2240 events
- Programmable alarm thresholds
- Ultrasonic airflow sensing
- A single device covers up to 2000m²
- Particulate graph displays subtle environmental changes for early problem indication
- User friendly air flow pendulum graph for verification of pipe network functionality
- Protected electronics from air flow and accidental damage during installation or maintenance
- Easily replaceable and reusable filter without affecting the rest of the device
- Designed for efficient wiring and installation: cable gland holes, easy access to the wiring area and no special tools required.
- Easy access to parts requiring routine maintenance: filter(s) or sensor(s).
- Single & Dual channel versions with independent channels including fan, sensor and flow monitoring
- IP65 enclosure



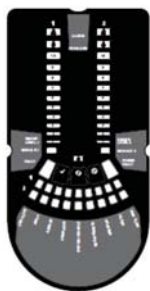
Alarm Level

The FAASTLT-200 detector uses an internal high sensitivity smoke sensor in each channel. The laser sensor has 9 sensitivity levels allowing 9 different Alarm or Pre-Alarm settings to be available in the detector; these are shown in the table following:

PipeIQ™LT software provides intuitive system layout and configuration all in one package



User Interface Display



The front panel will be different depending on which of the 3 stand alone models is being installed. The following information is displayed

- Alarm level; Alarm, Pre-Alarm
- Particulate Levels; 1-9
- Fault Status
- Flow Level
- Test, Reset and Disable Buttons

Physical Specification

Cable Access Knock out cable gland holes

Wire Gauge 0.5mm² to 2mm² max

Maximum Single and Branched Pipe Length: 80 or 100m in function of the class.

Maximum Air Inlet Holes 18

Outside Pipe Diameter 25mm or 27mm

Internal Pipe Diameter 15-21mm

Sensitivity Range 0.06%- 6% obs/m

Relays 3 (1 Alarm, 1 Fault, 1 Pre-Alarm) x per Channel

Sounder outputs 1 per channel

Event Log 2244 Events

Interfaces Terminal blocks: power supply, relays, sounder outputs, external input; USB port; Buttons (Test, Reset, Disable)

Power supply and relays connections 2mm² max

USB Standard USB cable for Type B USB connection

Shipping Weight- Including packaging material 6.5 Kg (dual channel)

Flow monitoring and reporting High and low according to EN54-20

Filtration Replaceable filter

Fan control 10 programmable speeds

Electrical Specifications

Smoke Sensor (s) Optical high sensitivity point type

External Supply Voltage 18.5-31.5 V

Remote Reset Time 1s

Power Reset 0.5s

FL0111E

Operating Current 170mA (typical); 360mA (max)@ 24 VDC (excluding sounders)

FL0122E

Operating Current 270mA (typical); 570mA (max)@ 24 VDC (excluding sounders)

Relay Contact Ratings 2.0 A @ 30 VDC, 0.5 A @30VAC

Environmental Specifications

Operating Temperature -10°C to 55°C

Humidity Range 10% to 93% (non condensing)

IP Rating 65

Sensitivity Levels

Level 1 0.06 % obs/m

Level 2 0.09 % obs/m

Level 3 0.15% obs/m

Level 4 0.30% obs/m

Level 5 0.60% obs/m

Level 6 1.50% obs/m

Level 7 3.00% obs/m

Level 8 4.50% obs/m

Level 9 6.00% obs/m

Ordering Information

Part No. Description

FL0122E-HS Stand Alone Dual Channel Detector

FL0111E-HS Stand Alone Single Channel Detector

Accessories

FL-IF-6: FFAST LT Integral Filter (6 filters)

Pipe and Fittings

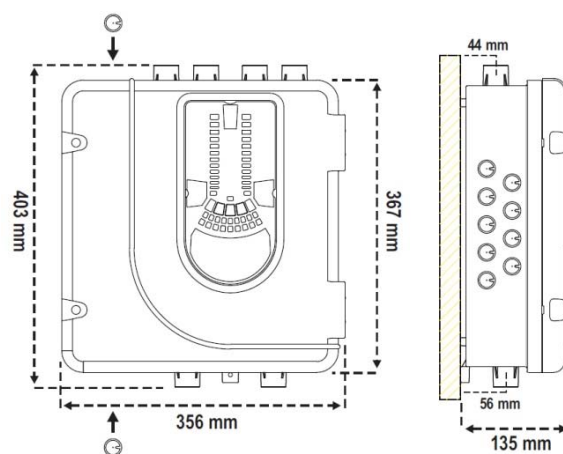
Listings and Approvals

CPD – LPCB

EN54-20: (holes per pipe) Class A – 3 holes, Class B – 6 holes, Class C - 18 holes (max 32 per device)

FL0111E-HS 0832-CPD-1990

FL0122E-HS 0832-CPD-1992



 **NOTIFIER[®]**
by Honeywell

Notifier Italia S.r.l.
Via Achille Grandi 22
20097 San Donato
Milanese (MI)
Italia

Tel.: +39 02 51 89 71
Fax: +39 02 51 89 730
E-Mail: notifier.milano@notifier.it
www.notifier.it