

ASPIRATING SMOKE DETECTOR – FAASTLT-200 loop

DESCRIPTION

The **FAASTLT-200** Aspirating Smoke Detector is designed with the installer and end user in mind. It serves the wide variety of Class C applications where maintenance is difficult, other smoke detection methods are inappropriate or prone to fail due to harsh environments or areas where aesthetics matters. It is also suitable for smaller mission critical applications where very early warning - Class A or B detection is required. **FAASTLT-200** combines proven aspiration detection technologies to deliver reliable smoke detection and efficient installation and maintenance. The device includes high sensitivity fire detection, ultrasonic flow sensors, and internal design features to protect vulnerable components from environmental and human threats. The device is fast to install and easy to commission thanks to PIPE IQ LT pipe design and configuration software which is included as standard. **FAASTLT-200** loop based devices are available as single channel and dual channel devices, offering flexibility for different detection strategies. A range of customizable settings are geared towards maximizing device performance and meeting different application needs. Loop capability allows standard device integration, maintenance and support consistent with other 200 series devices. The detector provides alarm and fault relays with auxiliary events relay as an option. These can be set as latched or non-latched. To accommodate local installation standards or environments, flow and general fault delays can also be set.

FEATURES

- Multiple event logging up to 2240 events.
- Ultrasonic airflow sensing.
- User friendly air flow pendulum graph for verification of pipe network functionality.
- Protected electronics from air flow and accidental damage during installation or maintenance.
- Easily replaceable and reusable filter without affecting the rest of the device.
- Designed for efficient wiring and installation: cable gland holes, easy access to the wiring area and no special tools required.
- Easy access to parts requiring routine maintenance: filter(s) or sensor(s).
- Single & Dual channel versions with independent channels including fan, sensor and flow monitoring.
- IP65 enclosure.

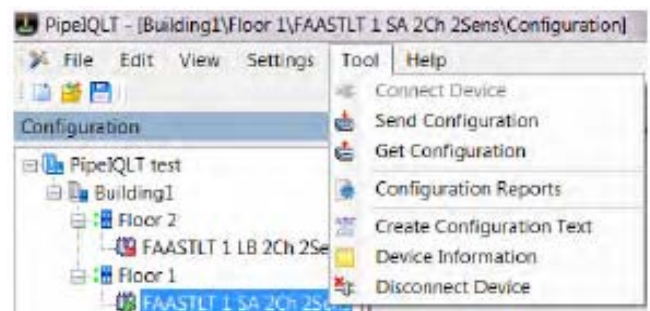


Alarm Level

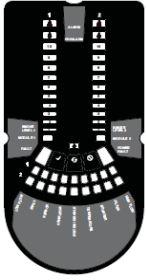
The **FAASTLT-200** detector uses an internal high sensitivity smoke sensor in each channel. The laser sensor has 9 sensitivity levels allowing 9 different Alarm or Pre-Alarm settings to be available in the detector; these are shown in the table following:

PREALARM / ALARM LEVEL	Obs in %/Feet	Obs in %/meter
Level 1	0,02 % obs/ft	0,07 % obs/m
Level 2	0,03 % obs/ft	0,10 % obs/m
Level 3	0,05 % obs/ft	0,16 % obs/m
Level 4	0,10 % obs/ft	0,33 % obs/m
Level 5	0,20 % obs/ft	0,66 % obs/m
Level 6	0,50 % obs/ft	1,64 % obs/m
Level 7	1,00 % obs/ft	3,28 % obs/m
Level 8	1,50 % obs/ft	4,92 % obs/m
Level 9	2,00 % obs/ft	6,56 % obs/m

PipeIQ™LT software provides intuitive system layout and configuration all in one package



User Interface Display



The front panel will be different depending on which of the 3 stand alone models is being installed.

The following information is displayed

- Alarm level; Alarm, Pre-Alarm
- Particulate Levels; 1-9
- Fault Status
- Flow Level
- Test, Reset and Disable Buttons

Physical Specification

Height: 403mm (including inlets and outlets)
Width: 356mm
Depth: 135mm
Cable Access Knock out cable gland holes
Wire Gauge 0.5mm² to 2mm² max
Maximum Single Pipe or Branched Length: 80/100m in function of the class.
Maximum Air Inlet Holes 18
Outside Pipe Diameter: 25mm or 27mm
Internal Pipe Diameter: 15-21mm
Sensitivity Range: 0.06%- 6% obs/m
Relays 2 (1 Alarm, 1 Fault) x per Channel
Sounder outputs 1 per channel
Event Log 2244 Events
Interfaces Terminal blocks: power supply, relays, sounder outputs, external input; Loop Connection, USB port; Buttons (Test, Reset, Disable)
Power supply and relays connections 2mm² max
USB Standard USB cable for Type B USB connection
Shipping Weight- Including packaging material 6.5 Kg (dual channel)
Flow monitoring and reporting High and low according to EN54-20
Filtration Replaceable filter
Fan control 10 programmable speeds

Electrical Specifications

Smoke Sensor (s) Optical high sensitivity point type
External Supply Voltage: 18.5-31.5 V
Remote Reset Time 1s
Power Reset 0.5s
Relay Contact Ratings: 2.0 A@30 VDC, 0.5 A@30 VAC
Avg. Operating Current from 24Vdc input
1 Channel: 170mA @ 24 VDC (excluding sounders)
2 Channel: 270mA @ 24 VDC (excluding sounders)

Max. Average Operating Current from 24Vdc input

1 Channel: 360mA @ 24 VDC (excluding sounders)
2 Channel: 570mA @ 24 VDC (excluding sounders)
Communication Loop Standby Current @ 24V:
900 µA max. (poll once every 5s)

Environmental Specifications

Operating Temperature -10°C to 55°C
Humidity Range 10% to 93% (non condensing)
IP Rating 65

Sensitivity Levels

Level 1 0.06 % obs/m
Level 2 0.09 % obs/m
Level 3 0.15% obs/m
Level 4 0.30% obs/m
Level 5 0.60% obs/m
Level 6 1.50% obs/m
Level 7 3.00% obs/m
Level 8 4.50% obs/m
Level 9 6.00% obs/m

Ordering Information

Part No. Description

FL2022EI-HS Loop Based Dual Channel Detector
FL2012EI-HS Loop Based Single Channel Dual Detector
FL2011EI-HS Loop Based Single Channel Detector

Accessories

FL-IF-6: FAAST LT Integral Filter (6 filters)

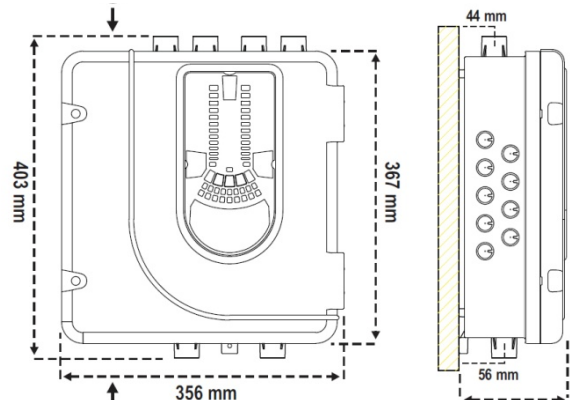
Pipe and Fittings

Listings and Approvals

CPD – LPCB

EN54-20: (holes per pipe)

Class A – 3 holes ,
Class B – 6 holes ,
Class C - 18 holes (max 32 per device)



 **NOTIFIER**[®]
by Honeywell

Notifier Italia S.r.l.
Via Achille Grandi 22
20097 San Donato
Milanese (MI)
Italia

Tel.: +39 02 51 89 71
Fax: +39 02 51 89 730
E-Mail: notifier.milano@notifier.it
www.notifier.it