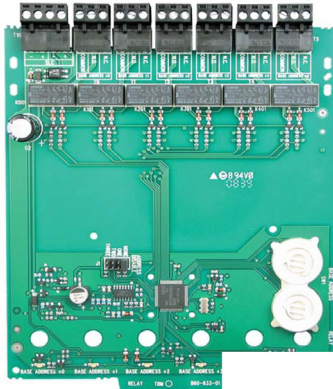


XP6-R

Six Relay Control Module

Intelligent/Addressable Devices



XP6-R

General

Notifier's XP6-R six-relay control module provides an intelligent alarm system with six Form-C relays.

The first module is addressed from 01 to 154 while the remaining modules are automatically assigned to the next five higher addresses.

Provisions are included for disabling a maximum of three unused modules.

A single isolated set of dry relay contacts is provided for each module address, which is capable of being wired for either a normally-open or normally-closed operation.

The module allows the control panel to switch these contacts on command. No supervision is provided for the controlled circuit.

Each XP6-R module has panel-controlled green LED indicators. The panel can cause the LEDs to blink, latch on, or latch off.

To ensure proper operation this module must be connected to a compatible Notifier Fire Alarm Control Panel.

Features

- Six addressable Form-C relay contacts.
- Removable 0.75 mm² to 1.5 mm² plug-in terminal blocks.
- Status indicators for each point.
- A maximum of three unused addresses may be disabled, unused addresses may be disabled.
- Rotary address switches.
- FlashScan[®] or CLIP operation.
- Mounting hardware included.

Specifications

Standby Current	1.45 mA (SLC current draw with all addresses used; if some addresses are disabled, the standby current decreases).
Alarm Current	32 mA (assumes all six relays have been switched once and all six LEDs solid ON).
Temperature Range	0°C to 49°C.
Humidity	10% to 85% noncondensing
Dimensions	172.72 mm high x 147.32 mm wide x 25.40 mm deep.
Wire Gauge	0.75mm ² to 1.5mm ²
Maximum SLC Wiring Resistance	40 or 50 ohms, panel dependent
Maximum IDC Wiring Resistance	40 ohms
Reply Current	30 mA/relay pulse (15.6 ms pulse duration), pulse under panel control.
Relay Contact Ratings	30 VDC; 70.7 VAC
Current Ratings	3.0 A @ 30 VDC maximum, resistive, non-coded. 2.0 A @ 30 VDC maximum, resistive, coded. 1.0 A @ 30 VDC maximum, inductive (L/R = 2 ms), coded 0.5 A @ 30 VDC maximum, inductive (L/R = 5 ms), coded 0.9 A @ 110 VDC maximum, resistive, non-coded. 0.9 A @ 125 VAC maximum, resistive, non-coded. 0.7 A @ 70.7 VAC maximum, inductive (PF = 0.35), non-coded. 0.5 A @ 125 VAC maximum, inductive (PF = 0.35), non-coded.

Ordering Information

XP6-R	Six Relay Control Module
-------	--------------------------

Agency Listings and Approvals

These listings and approvals apply to the module specified in this document. In some cases, certain module or applications may not be listed by certain approval agencies, or listing may be in process. Consult the factory for the latest listing status.

SAI Global : License SMK40640-2

This document is not intended for installation purposes. We try to keep our product information up-to-date and accurate. We cannot cover all specific applications or anticipate all requirements. All specifications are subject to change without notice.

© 2023 Honeywell International Inc.

Country of Origin: Mexico

For more information, contact Notifier:

Phone (Australia): 1800 220 345 (Toll free)

Phone (New Zealand): 800 220 345 (Toll free)

www.notifier.com.au

www.notifier.co.nz



DOC-02-045 | 01/23 | Rev. D