

# MS-95 Addressable Manual Fire Alarm Station

## Description

Gamewell's MS-95 Addressable Manual Pull Station is designed to be used with Gamewell's 600 Series Analog Addressable Control Panels. The MS-95 satisfies architectural requirements for a manual alarm initiating device. It contains a switch which is internally connected to the electronic interface that is required for individual addressable identification to and from the Fire Alarm Control Panel.

The Addressable Manual Station is shock and vibration resistant. A toggle switch of rugged construction provides exceptionally high resistance to accidental operation from sudden shock. The MS-95 can be used for both surface and semi-flush installations. It is of compact design, blends in well with all building interiors, yet is easily recognized in an emergency situation. The Addressable Manual Pull Station complies with UL Standard 38 for manual stations.

## Operation

The station is activated by pulling forward a readily identifiable bulls-eye alarm lever marked "Pull". Upon activation, this lever locks in the alarm position and remains so until manually reset. Resetting is accomplished by releasing the hinged front cover and manually resetting the toggle switch. Release of the cover is accomplished by a releasing screw or, if utilizing the Key Reset Option, a Gamewell CAT60 Key .

An optional breakglass rod may be used with all stations. The self-clearing design prevents jamming of the station and there is no danger to the operator from broken particles of glass. Space is provided within the station housing for storage of an additional replacement glass rod.

The MS-95 connects directly to the Analog Addressable circuit via two wires. The electronic circuitry has been designed to transmit data that can be interpreted as three output operations: Normal Quiescent Operation, Alarm Operation and Trouble Operation. In its quiescent mode of operation, the pull station's electronics monitor the switch for alarm conditions. A trouble condition occurs when the pull station is addressed by the control panel and either reports back a trouble response or does not respond at all. With the standard priority interrupt feature , the MS-95 will report its condition virtually instantaneously in Gamewell's Analog Addressable Control Panels.

## Programming

Programming of the MS-95 Manual Station is accomplished through the setting of a single DIP switch easily accessible on the device's printed circuit board. The DIP switch is used to set the address of the device. All other programming is accomplished at the control panel, either through the use of a laptop computer or through the Operator's Display.



## Approvals

UL Listed, CSFM, MEA, FM Approved

## Features

- Compatible with Gamewell's 600 Series Analog Addressable Control Panels
- Field Programmable
- Durable Construction
- Compact design, blends with surroundings
- Recessed pull lever prevents accidental operation
- Self-clearing breakglass option
- Surface or semi-flush installation
- Double action option
- Key reset option
- Meets ADA requirements

## Engineer's Specification

The analog addressable manual pull station shall contain the electronic interface circuitry required for individual device identification, alarm reporting and trouble supervision. It shall communicate to the main control panel via the analog addressable circuit. The single action non-coded station shall consist of a die-cast aluminum housing fitted with a pull out lever which, when operated, locks in position after activating an alarm initiating contact.

Resetting the station after operation shall require opening the front cover for access to the alarm switch. The manual fire alarm station shall be a Gamewell Analog Addressable Manual Pull Station model number MS-95 and shall be U.L. listed.

The manual pull station shall be adaptable for surface or semi-flush installation. In addition, there shall be provisions for a self-clearing break-glass mechanism.

## Specifications

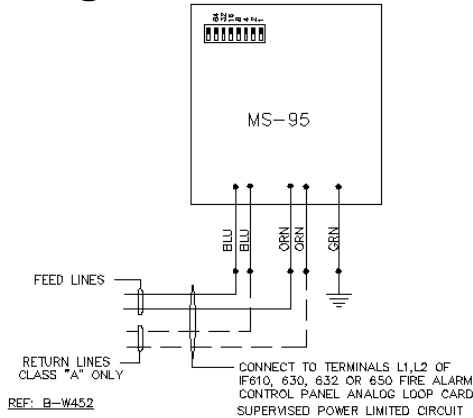
Quiescent Current	.0005A
Alarm Current	.0015A
Operating Temperature	0°C + 49°C
Relative Humidity	85%, Non-Condensing
Material	Die-Cast Aluminum
Finish	Fire Alarm Red, smooth gloss enamel. Raised cast letters are high-lighted. Target background for pull lever is white gloss enamel.
Dimensions	4 <sup>5</sup> / <sub>8</sub> " high by 3 <sup>1</sup> / <sub>4</sub> " wide by 2" deep (from the backplate)
MS-95 with Key Reset Option	6 <sup>1</sup> / <sub>4</sub> " high by 3 <sup>1</sup> / <sub>4</sub> " wide by 2" deep (from the backplate)
Surface Backbox P/N 28762	4 <sup>5</sup> / <sub>8</sub> " high by 3 <sup>1</sup> / <sub>4</sub> " wide by 2 <sup>3</sup> / <sub>8</sub> " deep

## Ordering Information

Model	Part Number	Description
	MS-95	Analog Addressable Manual Pull Station
	30653	Double Action Option
	30653-01	Key Reset Option
	30653-02	Key Reset/Double Action Option
	28762	Backbox, Surface Mount
	71961	Backbox, Surface for Key Reset Options

\* If no Part Numbers are shown, use Model Numbers.

## Wiring Diagram



Specifications and wiring information are provided for information only and are believed to be accurate. Gamewell assumes no responsibility for their use. Data and design are subject to change without notice. Installation and wiring instructions shipped with the product shall always be used for actual installation. For more information, contact Gamewell.



The Gamewell Company  
60 Pleasant St.  
Ashland, MA 01721

Voice (508) 231-1400  
888-FIREBOX • (888) 347-3269  
FAX (508) 231-0900  
www.gamewell.com

Made in the USA

©Gamewell 2001

CS-2053 Rev. 0701-1