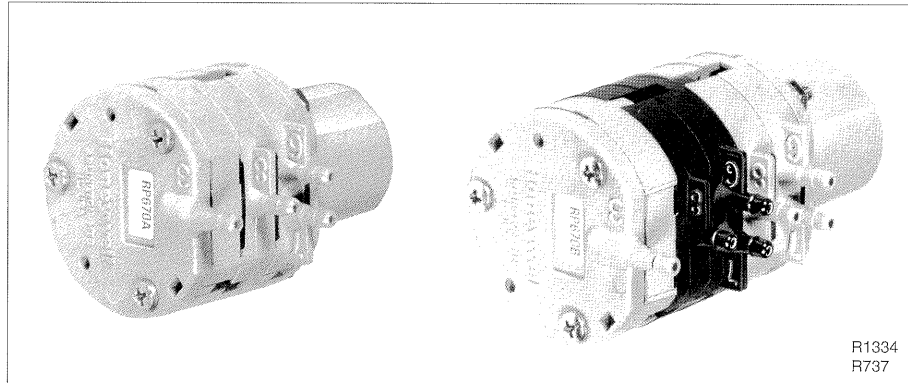


# RP670A & B Pneumatic Switching Relays



## General

The RP670A and B Switching Relays are two-position pneumatic relays with either single-pole (RP670A) or double-pole (RP670B), double-throw switching action. They are designed for use in pneumatic heating and cooling control systems where a valve or damper operator must be switched from one circuit to another. Switchover pilot pressure must be two-position, not modulated.

## Features

- Available with either single-pole, double-throw (spdt) or double-pole, double-throw (dpdt) switching action
- Second switch on dpdt (RP670B) models molded in black for identification
- Air connections for 5/32-in. (4-mm) O.D. plastic tubing
- Molded plastic construction with neoprene diaphragms, stainless steel lever, and music wire spring
- In-line mounting, or wall or panel mounting with provided metal spring clip

## Description

RP670A and B Switching Relays are two-position pneumatic relays with either single-pole (RP670A) or double-pole (RP670B), double-throw switching action.

## Specifications

### Models:

RP670A: Spdt switching Relay; switching action occurs between:

- 3 and 7 psi (20 and 50 kPa)
- 13 and 17 psi (90 and 120 kPa)
- 18 and 22 psi (124 and 152 kPa)
- 20 and 25 psi (140 and 175 kPa)

RP670B: Dpdt Switching Relay; switching action occurs between:

- 3 and 7 psi (20 and 50 kPa)
- 13 and 17 psi (90 and 120 kPa)
- 18 and 22 psi (124 and 152 kPa)
- 20 and 25 psi (140 and 175 kPa)

### Operating Pressure:

0 to 25 psi (0 to 150 kPa)

### Air Handling Capacity:

0.039 scfm (18 ml/s) and 1 psi (7 kPa) pressure drop across RP670

### Air Connections:

For 5/32-in. (4-mm) O.D. plastic tubing

### Materials of Construction:

Molded plastic with neoprene diaphragms  
Stainless steel lever  
Music wire spring

### Mounting:

In line, or wall or panel with metal spring clip (optional)

### Switchover Pilot Pressure:

Two-position

### Maximum Safe Pressure:

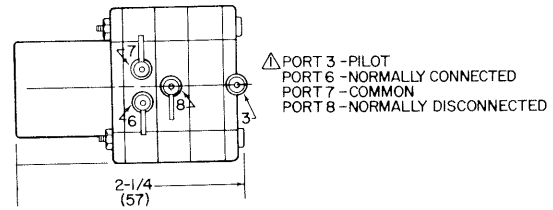
30 psi (207 kPa)

### Ambient Operating Limits:

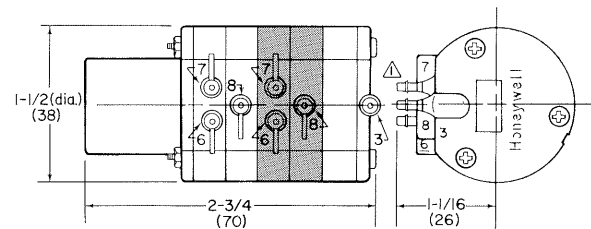
Temperature: 32 to 125F (0 to 52C)

Humidity: 5 to 95% rh

### Dimensions In Inches (Millimeters)



RP670A



RP670B

By using this Honeywell literature, you agree that Honeywell will have no liability for any damages arising out of your use or modification to, the literature. You will defend and indemnify Honeywell, its affiliates and subsidiaries, from and against any liability, cost, or damages, including attorneys' fees, arising out of, or resulting from, any modification to the literature by you.

**Honeywell**

#### Home and Building Control

Honeywell Inc.  
Honeywell Plaza  
P.O. Box 524  
Minneapolis, MN 55408-0524  
77-9851 MLF TAB: II. C. 5. Rev. 6-93

#### Home and Building Control

Honeywell Limited-Honeywell Limitée  
740 Ellesmere Road  
Scarborough, Ontario  
M1P 2V9

Helping You Control Your World