



Architects and Engineering Specification

System Sensor L-Series Speaker Strobe

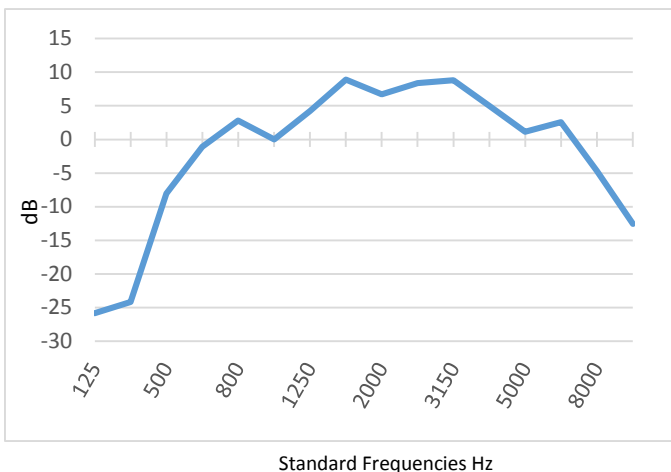
The speaker strobe shall be a System Sensor L-Series Model _____ listed to UL 1971 and UL 1480 and shall be approved for fire protective signaling systems. It shall be a dual-voltage transformer speaker strobe capable of operation at 25.0 or 70.7 nominal Vrms. The speaker shall have a frequency range of 400 to 4,000 Hz and shall have an operating temperature between 32°F and 120°F. It shall mount to a 4 x 4 x 2 1/8-inch back box.

A universal mounting plate shall be used for mounting ceiling and wall speaker strobe products. The notification appliance circuit and amplifier wiring shall terminate at the universal mounting plate. The L-Series strobe and the Sync•Circuit™ Module MDL3 accessory, if used, shall be powered from a non-coded notification appliance circuit output and shall operate on a nominal 12 or 24 volts. When used with the Sync•Circuit Module MDL3, 12-volt-rated notification appliance circuit outputs shall operate between 8.5 and 17.5 volts; 24-volt-rated notification appliance circuit outputs shall operate between 16.5 and 33 volts. If the notification appliances are not UL 9th edition listed with the corresponding panel or power supply being used, then refer to the compatibility listing of the panel to determine maximum devices on a circuit.

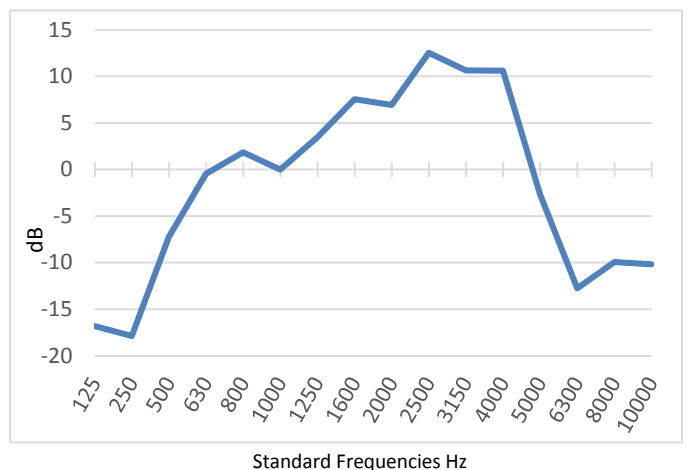
The speaker strobe shall be plug-in and shall have the ability to check wiring continuity via a shorting spring on the universal mounting plate. The shorting spring shall also provide tamper resistance via an open circuit if the device is removed. All notification appliances shall be backward compatible.

The speaker strobe shall have power taps (from ¼ watt to 2 watts) and voltage that are selected by rotary switches. All models have a maximum sound output of 86dB at 10 feet and shall incorporate an open back construction. The strobe shall have field-selectable candela settings including 15, 30, 75, 95, 110, 135, 185 for wall mounted units and 15, 30, 75, 95, 115, 150, 177 for ceiling mounted units. The strobe light shall consist of a xenon flash tube and associated lens/reflector system and operate on either 12V or 24V. The strobe shall comply with NFPA 72 and the Americans with Disabilities Act requirement for visible signaling appliances, flashing at 1 Hz over the strobe's entire operating voltage range. All notification appliances shall be backward compatible.

L-Series Ceiling Speaker Strobe Wide Band Frequency Response



L-Series Wall Speaker Strobe Wide Band Frequency Response



Note: The wide band frequency response is derived using MLS methods

3/23/2017