

CAUTION Installation and servicing should be performed only by qualified and experienced technicians to conform to all local codes and to maintain your warranty

CAUTION To ensure compliance with electrical safety standards, NRTL-approved Class 2 power adaptors are required.

CAUTION To comply with EN 50130-4 requirements, a UPS should be employed when powering the camera from 24 V AC.

CAUTION IR emitted from this product. Do not view directly with optical instruments (magnifiers). Do not stare directly into the lamp at a distance of less than 3.3 ft (1 m).

CAUTION Risk of explosion if battery is replaced by an incorrect type. Dispose of used batteries in accordance with local laws.

FCC Statement of Compliance

Information to the User: This equipment has been tested and found to comply with the limits for a Class A digital device, pursuant to part 15 of the FCC Rules. These limits are designed to provide reasonable protection against harmful interference when the equipment is operated in a commercial environment. This equipment generates, uses, and can radiate radio frequency energy and, if not installed and used in accordance with the instruction manual, may cause harmful interference to radio communications. Operation of this equipment in a residential area is likely to cause harmful interference in which case the user will be required to correct the interference at his own expense.

Note: Changes or modifications not expressly approved by the party responsible for compliance could void the user's authority to operate the equipment.

This Class A digital apparatus complies with Canadian ICES-003.
Cet appareil numérique de la Classe A est conforme à la norme NMB-003 du Canada.

Manufacturer's Declaration of Conformance

North America The equipment supplied with this guide conforms to UL 60950-1 and CSA C22.2 No. 60950-1.

Europe The manufacturer declares that the equipment supplied with this guide is compliant with the European Parliament and Council Directive on the Restrictions of the use of certain Hazardous Substances in electrical and electronic equipment (2011/65/EU), General Product Safety Directive (2001/95/EC) and the essential requirements of the EMC Directive (2014/30/EU), conforming to the requirements of standards EN 55032 for emissions, EN 50130-4 for immunity, and EN 60950-1 for electrical equipment safety.

This is a Class A product. In a domestic environment this product may cause radio interference in which case the user may be required to take adequate measures.

Waste Electrical and Electronic Equipment (WEEE)

Correct Disposal of this Product

(applicable in the European Union and other European countries with separate collection systems).

This product should be disposed of, at the end of its useful life, as per applicable local laws, regulations, and procedures.

Safety Instructions

Before installing or operating the unit, read and follow all instructions. After installation, retain the safety and operating instructions for future reference.

1.

HEED WARNINGS - Adhere to all warnings on the unit and in the operating instructions.
2.

INSTALLATION
 - Install in accordance with the manufacturer's instructions.
 - Installation and servicing should be performed only by qualified and experienced technicians to conform to all local codes and to maintain your warranty.
 - Any wall or ceiling mounting of the product should follow the manufacturer's instructions and use a mounting kit approved or recommended by the manufacturer.
3.

POWER SOURCES - This product should be operated only from the type of power source indicated on the marking label.
4.

HEAT - Situate away from items that produce heat or are heat sources such as radiators, heat registers, stoves, or other products (including amplifiers).
5.

MOUNTING SYSTEM - Use only with a mounting system recommended by the manufacturer, or sold with the product.
6.

ATTACHMENTS - Do not use attachments not recommended by the product manufacturer as they may result in the risk of fire, electric shock, or injury to persons.
7.

ACCESSORIES - Only use accessories specified by the manufacturer.
8.







CLEANING - Do not use liquid cleaners or aerosol cleaners. Use a damp cloth for cleaning.
9.

SERVICING - Do not attempt to service this unit yourself as opening or removing covers may expose you to dangerous voltage or other hazards. Refer all servicing to qualified service personnel.
10.

REPLACEMENT PARTS - When replacement parts are required, be sure the service technician has used replacement parts specified by the manufacturer or have the same characteristics as the original part. Unauthorized substitutions may result in fire, electric shock or other hazards. Using replacement parts or accessories other than the original manufacturers may invalidate the warranty.

Before You Begin

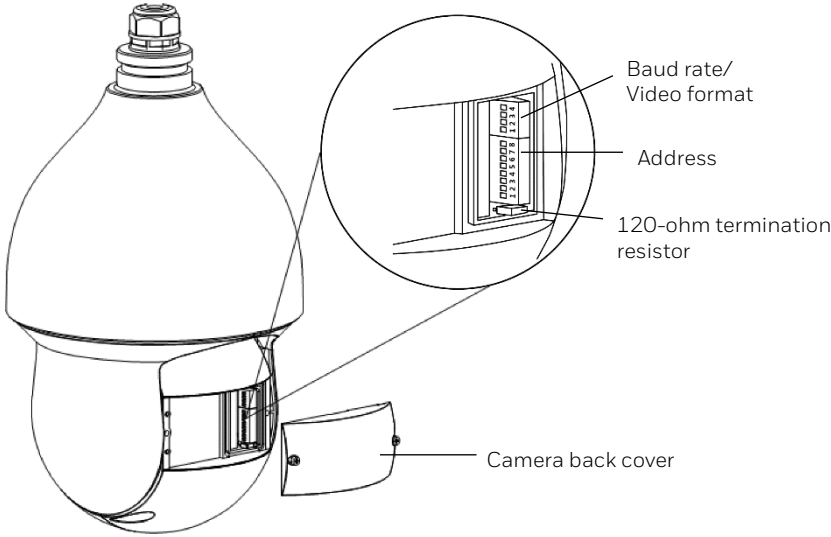
Check that you have received all of the items listed below:

| Module | Accessories | | | | |
|--|---|--|---|--|--|
|  HDZP30XD4 |  Wall Mount |  Pendant Adaptor |  Wrench |  Waterproof Tape |  Quick Start Guide |

Note: Remove the protective cover bag and tape from the camera body before installation.

Configuring the DIP Switches

Remove the panel at the rear of the camera and familiarize yourself with the camera's DIP switches.



Use the following ON/OFF positions as a reference when setting the camera address, baud rate, or video format:

ON

Switch is set to ON

ON

Switch is set to OFF

ON

1 2 3 4

Switches 1, 2, and 3 are set to ON, and switch 4 is set to OFF.

Note: This unit supports **HQA**, **Pelco-D**, and **Pelco-P** protocols only. The protocol is recognized automatically so it does not need to be set at the camera. However, the protocol does need to be set at the DVR.

Setting the Camera Address (RS485 Only)

If you are installing more than one PTZ camera in an RS485 wiring system, you will need to assign each camera a unique address.

The camera address is set using the 8-position DIP switch. Use the following table as a reference:

| Address | 1 | 2 | 3 | 4 | 5 | 6 | 7 | 8 |
|---------|-----|-----|-----|-----|-----|-----|-----|-----|
| 0 | OFF | OFF | OFF | OFF | OFF | OFF | OFF | OFF |
| 1 | ON | OFF | OFF | OFF | OFF | OFF | OFF | OFF |
| 2 | OFF | ON | OFF | OFF | OFF | OFF | OFF | OFF |
| 3 | ON | ON | OFF | OFF | OFF | OFF | OFF | OFF |
| 4 | OFF | OFF | ON | OFF | OFF | OFF | OFF | OFF |
| 5 | ON | OFF | ON | OFF | OFF | OFF | OFF | OFF |
| 6 | OFF | ON | ON | OFF | OFF | OFF | OFF | OFF |
| 7 | ON | ON | ON | OFF | OFF | OFF | OFF | OFF |
| 8 | OFF | OFF | OFF | ON | OFF | OFF | OFF | OFF |
| | | | | | | | | |
| 254 | OFF | ON | ON | ON | ON | ON | ON | ON |
| 255 | ON | ON | ON | ON | ON | ON | ON | ON |

For example, if you want to set the camera address to 6, set switches 2 and 3 to ON, and set switches 1, 4, 5, 6, 7, and 8 to OFF.

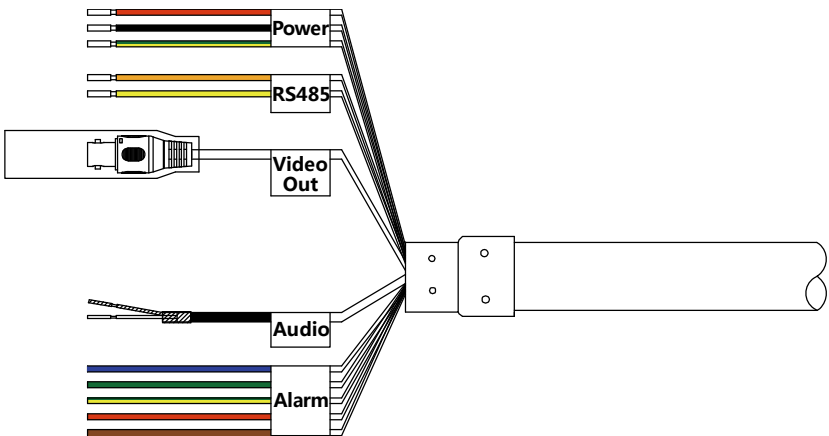
Setting the Baud Rate and Video Format

The baud rate and video format are set using the 4-position DIP switch. Use the following tables as a reference:

| Baud Rate | 1 | 2 |
|-----------|-----|-----|
| 9600 bps | OFF | OFF |
| 4800 bps | ON | OFF |
| 2400 bps | OFF | ON |
| 1200 bps | ON | ON |

| Video Format | 3 | 4 |
|--------------|-----|-----|
| CVI | OFF | OFF |
| TVI | OFF | ON |
| AHD | ON | OFF |
| SD | ON | ON |

Connecting the Cables



| | | |
|-----------|----------------|-------------|
| Power | Red | 24 V AC |
| | Black | 24 V AC |
| | Yellow & Green | Earth |
| RS485 | Yellow | A+ |
| | Orange | B- |
| Video Out | BNC | |
| Audio | White | Audio IN |
| | Black | Audio GND |
| | Blue | Alarm OUT 1 |
| Alarm | Green | Alarm COM1 |
| | Red | Alarm IN1 |
| | Brown | Alarm IN2 |
| | Yellow & Green | Alarm GND |

Recommended Cables and Maximum Distances

| Type | Recommended Cable | Maximum Distance |
|-------|--|--|
| Power | 18 AWG 2-conductor | 153 ft (46.5 m) |
| Data | Cat5 24 AWG twisted pair (use shielding in high electrical interference locations) | 5905 ft (1800 m) @ 2400 bps 3937 ft (1200 m) @ 4800 bps 2625 ft (800 m) @ 9600 bps |
| Video | RG-59/U coaxial cable with BNC crimp, 75 ohm, copper conductor | 750 ft (229 m) |
| Alarm | Belden 8205 | 10,000 ft (3048 m) |

RS-485 Connection Guidelines

- Data termination (120 ohm) is set at the rear of the camera, next to the DIP switches. It is open by default, with the jumper over pins 2 and 3. To terminate the camera, place the jumper over pins 1 and 2 (see figure at right).
- In an RS485 bus, terminate the two endpoints to prevent signal reflection. If a star topology is used, terminate all connected PTZ cameras and use an RS485 data distributor (such as HD CD8TP).

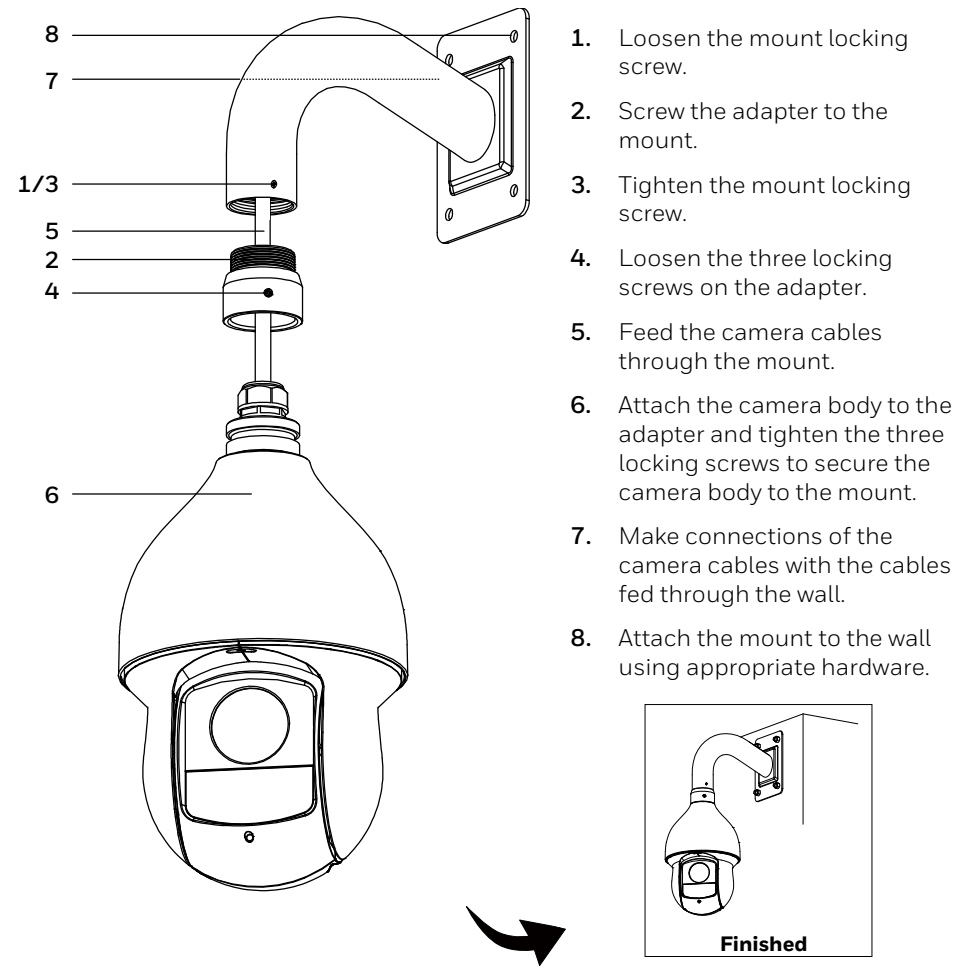


Note: For more information, please refer to the HDZP30XD4 user guide (800-23522). The guide is available for download from www.honeywellvideo.com.

Mounting the Camera

The wall mount weighs 1.08 lb (0.49 kg) and can be installed directly to a load-bearing wall, or to a corner or pole using an appropriate adapter.

Important! Ensure that the mounting surface can support at least three times the combined weight of the camera and mount (at least 27.72 lb/12.57 kg).



Configuring the OSD Menu Settings

When the camera is connected to a Honeywell Performance Series DVR (HRHQXXXX/HRHTXXXX), you can access and configure the camera's on-screen display (OSD) menu using either the HQA or RS485 control modes.

OSD Configuration: Up-the-Coax

Note: The DVR's PTZ control mode and protocol must be set to **HQA** (in **Main Menu > Setting > System > PTZ**) for up-the-coax control of the OSD menu.

- Verify that the camera is connected to a Honeywell Performance Series DVR.
- Turn on the DVR, right-click to display the shortcut menu, then click **Camera Menu**.
- Log on to the DVR as the admin user. The **Menu Operation** window opens.
- Click **Enter** to display the camera's OSD menu.
- To configure OSD settings, in the **Menu Operation** window, click the up or down arrows to move through the menu list, click the left or right arrows to change a setting, or click **Enter** to enter a submenu (↵) or execute a command.
- After you have finished configuring the camera, scroll down to **Exit**, and then click **Enter** to exit the OSD menu. Right-click to close the **Menu Operation** window.



OSD Configuration: RS485

Note: The DVR's PTZ control mode must be set to **Serial** (in **Main Menu > Setting > System > PTZ**) for RS485 control of the OSD menu.

| Task | Action |
|--|-----------------------------------|
| To display the OSD menu | Call Preset 95 . |
| To scroll through the OSD menu | Move the joystick up or down. |
| To change a setting | Move the joystick left or right. |
| To open a submenu (↵) or execute a command | Press Iris + (Iris Open). |
| To exit the OSD menu | Press Iris - (Iris Close). |



www.honeywell.com/security
+1 800 323 4576 (North America only)
<https://www.honeywellsystems.com/ss/techsupp/index.html>