

BACnet WiFi Adapter (BACA-A)

MOUNTING AND OPERATING INSTRUCTIONS

Keep these instructions together with the device or with the equipment documentation!

! CAUTION: To comply with FCC RF exposure compliance requirements, the BACnet WiFi Adapter must be installed at such a location as to ensure that it is always separated from all persons by a distance of at least 20 cm when in operation! It is prohibited to co-locate or operate it in conjunction with any other transmitter.

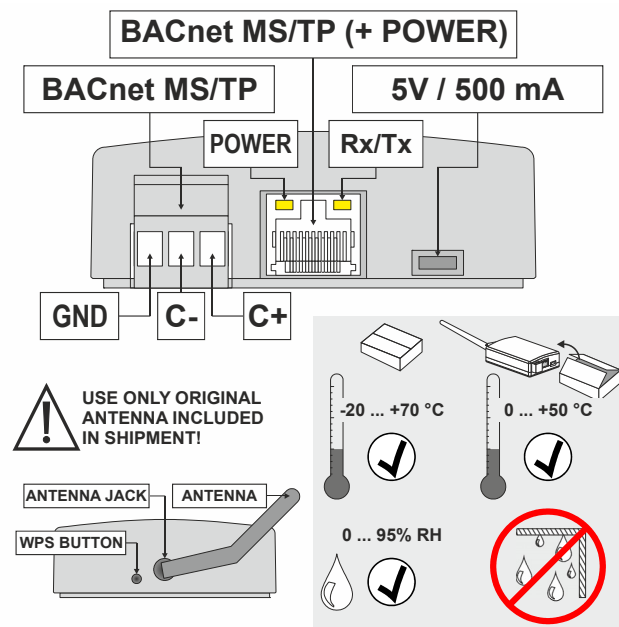
PURPOSE:

The BACnet WiFi Adapter talks BACnet IP via WiFi and includes a router to BACnet MS/TP. It can be used for commissioning and debugging BACnet systems.

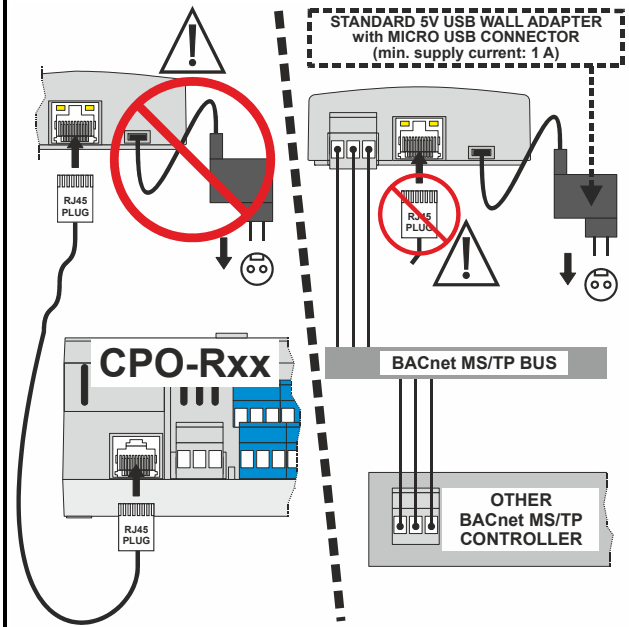
CYBER SECURITY:

After use, the BACnet WiFi Adapter should not be left on site and/or connected with the controller or BACnet bus. Rather, it should be disconnected and stored in a secure place. This is to prevent unauthorized system access.

0A. FRONT / REAR VIEWS

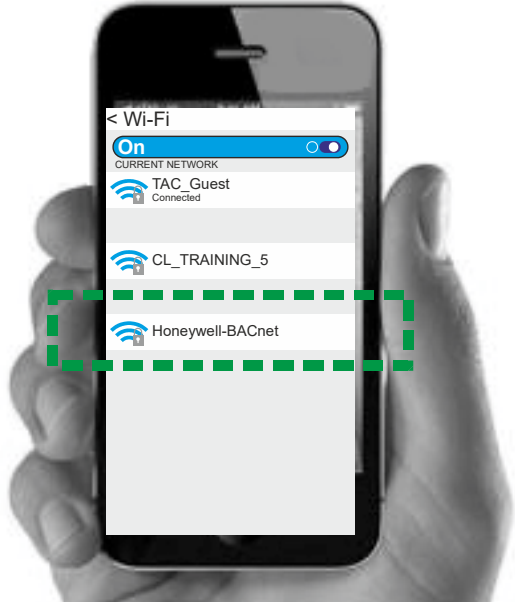


0B. POWER

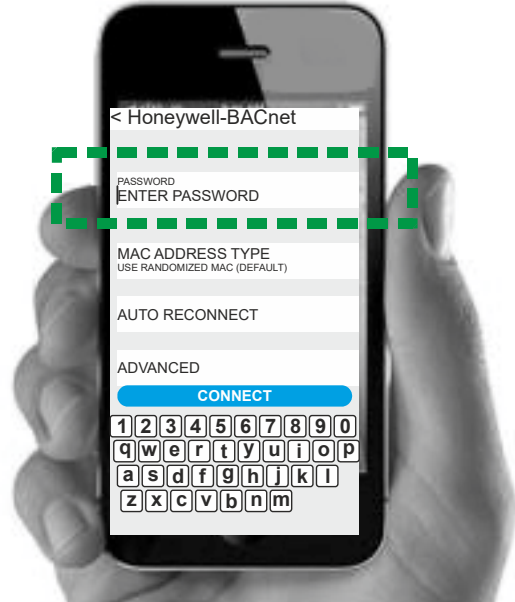


STANDARD PROCEDURE (STEPS 01A – 06A) FOR CONNECTING BACNET WIFI ADAPTER TO NETWORK – WHEN USING MOBILE DEVICE RUNNING ON ANDROID OPERATING SYSTEM

01A. OPEN YOUR MOBILE DEVICE. "SETTINGS – CONNECTIONS – WiFi." FROM THE LIST OF AVAILABLE NETWORKS, SELECT "Honeywell BACnet NETWORK" (BACA-A DEFAULT FACTORY WiFi NAME IS "Honeywell-BACnet").



02A. IF PROMPTED, TYPE IN THE NETWORK PASSWORD.



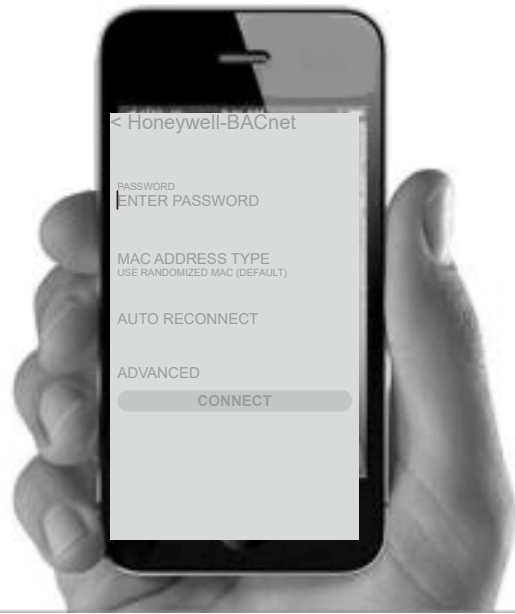
03A. FOR NETWORK PASSWORD AFTER A FACTORY RESET, SEE THE LABEL ON THE BOTTOM OF THE HOUSING.

BACA-A **Honeywell**
 5VDC +/- 5%, 2,5W, class 2, IP20, T50
 WPA2: **jjc4 5znc n6up**
 MAC Address 00:09:AF:10:70:08
 Contains FCC ID 2A7K-WMNBM11
 Contains IC 20881-WMNBM11

CE **US**
 D-71101 Sc...
 Made in Germany <http://ecc.emea.honeywell.com>

DEFAULT NETWORK PASSWORD (AFTER FACTORY RESET)

04A. THEN TOUCH THE "CONNECT" BUTTON. THE CONNECTION PROCESS WILL THEN RUN FOR A WHILE.



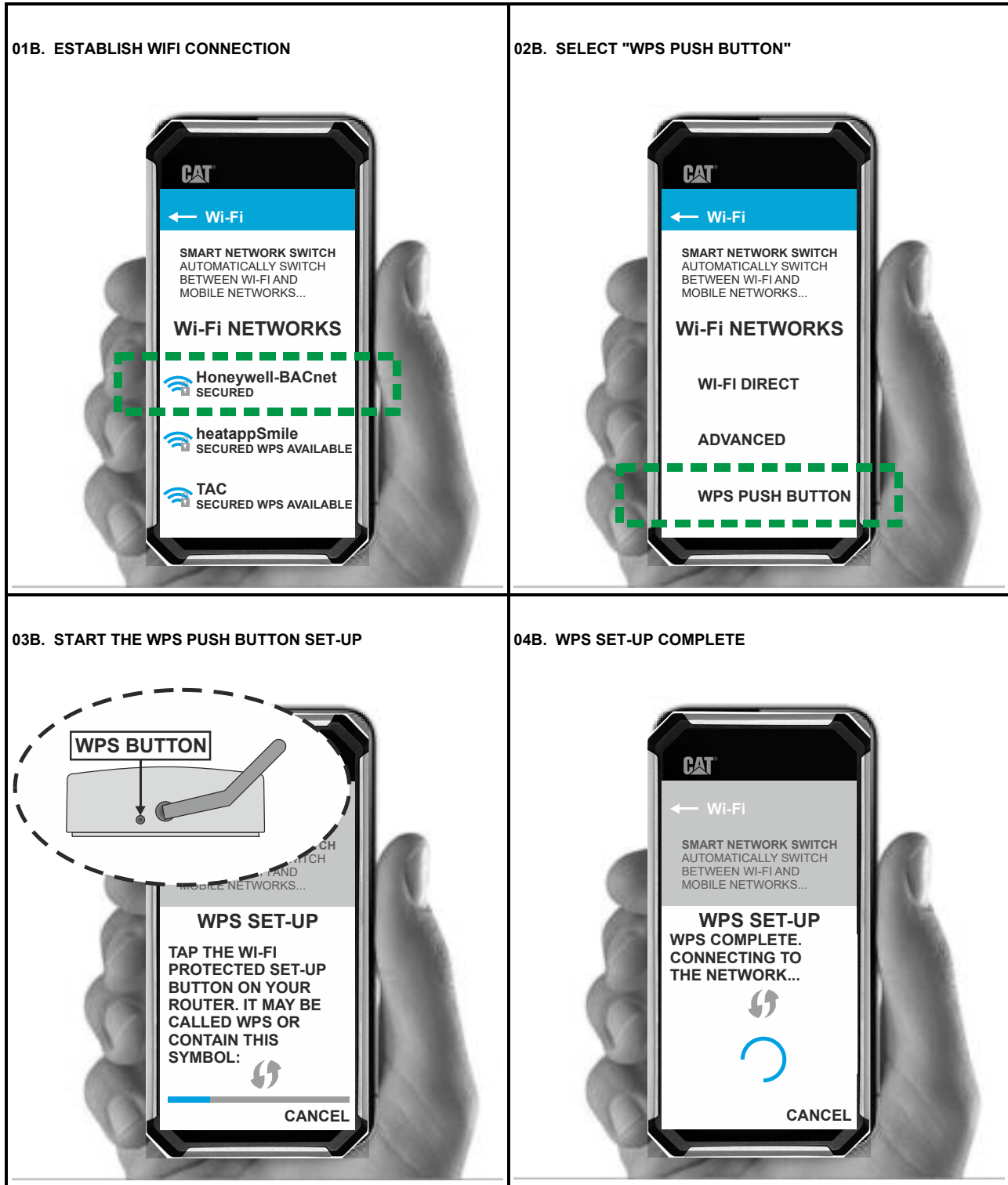
05A. THEN CLICK "KEEP WiFi CONNECTION." THE CONNECTION WILL THEN BE ESTABLISHED.



06A. IF THE NETWORK YOU HAVE SELECTED IS LISTED AS "CURRENT NETWORK," YOUR NETWORK CONNECTION HAS BEEN ESTABLISHED!



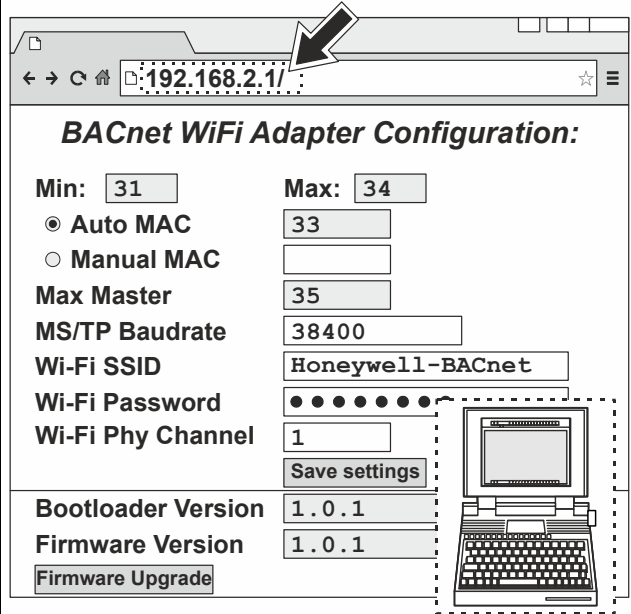
WPS PROCEDURE (STEPS 01B – 06B) FOR CONNECTING BACNET WIFI ADAPTER TO NETWORK – WHEN USING MOBILE DEVICE RUNNING ON ANDROID OPERATING SYSTEM SOFTWARE VERSION 8 OR EARLIER



05B. WIFI CONNECTION ESTABLISHED



06B. OPTIONAL CONFIGURATION



07. SEE ALSO:



→ ComfortPoint Open CPO-Rxx ROOM CONTROLLERS...
 ● DATA SHEET (EN0B-0732GE51)
 ● INSTALLATION & COMM. INSTRUCTIONS (EN1B-0591GE51)



→ BACnet WiFi Adapter...
 ● PRODUCT DATA (EN0B-0733GE51)
 ● MOUNTING & OPER. INSTRUCTIONS (MU1B-0592GE51)

08. SPECIFICATIONS

PURPOSE:	OPERATING CONTROL
CONSTRUCTION:	INDEPENDENTLY MOUNTED
ACTION TYPE:	1
POLLUTION DEGREE:	2
SOFTWARE CLASS:	A
RATED IMPULSE VOLTAGE:	500 V



Manufactured for and on behalf of the Connected Building Division of Honeywell Technologies Sàrl, Rolle, Z.A. La Pièce 16, Switzerland by its Authorized Representative:

Home and Building Technologies

Honeywell GmbH
Böblinger Strasse 17
71101 Schönaich, Germany
Phone +49 (0) 7031 637 01
Fax +49 (0) 7031 637 740
<http://ecc.emea.honeywell.com>

MU1B-0592GE51 R0521D

Subject to change without notice