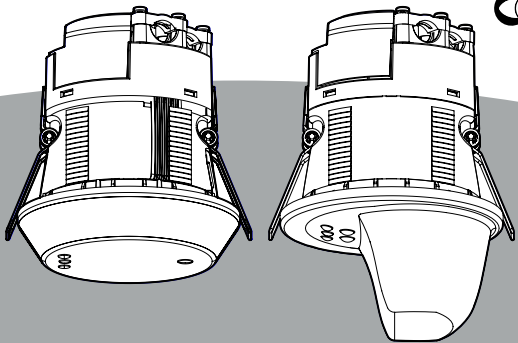


Installation Instructions



Mxx3421 & Mxx3500 High Detection Microwave Sensors

⚠ Only suitably qualified personnel should install this equipment

32355476-001 REV.C 25-Jul-2022

Part Number	Flush Mount	Switch Input (Mains)	Switched Live Output	Volt free output	Connect to MLS	Connect to DALI Bus	360 degree sensing	Directional Sensing	24hr mode	Lighting scenes	OneSwitch dimming
MLS3421DRF	•	•		•	•	•	•		•	•	•
MLS3500DRF	•	•		•	•	•		•	•	•	•
MR3500DRF	•	•		•					•		•
MR3500RF	•	•		•					•		
MR3421R2F	•		•	•			•		•	•	

Security

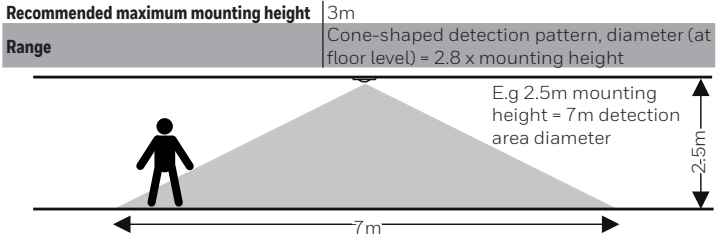
For details of securing the product and system see the General Security Best Practice for Ex-Or Products Information Sheet - D6004.

1) Determine Position

The Mxx3421 & Mxx3500 sensors are extremely sensitive movement detectors. They must be installed on a rigid surface that will not be subject to movement or vibration. They are not recommended for applications where there are large surface areas of metal, e.g. metal ceiling or floor tiles, as unpredictable sensitivity may result. Microwaves can penetrate lightly built partitions, glass, etc. Movement in adjacent spaces may cause spurious triggering if the orientation and sensitivity setting of the detector is not managed carefully.

Mxx3421

Do not mount within 0.25m of a luminaire. Max distance between sensors = 5m

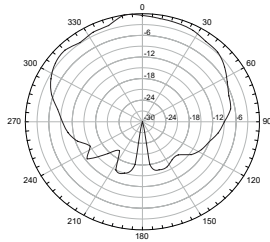


Mxx3500

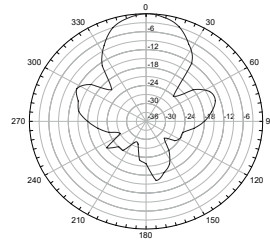
Position the detector where it has a good 'view' of the space to be controlled. An ideal location is in a corner adjacent to the entrance of a room or at one end of a corridor. Do not mount within 0.25m of a luminaire.

Recommended maximum mounting height	3.5m
Range	Adjustable up to 20m

Horizontal



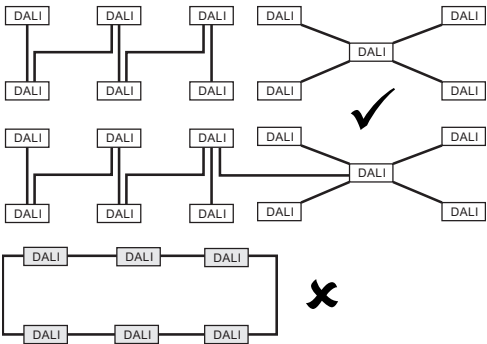
Vertical



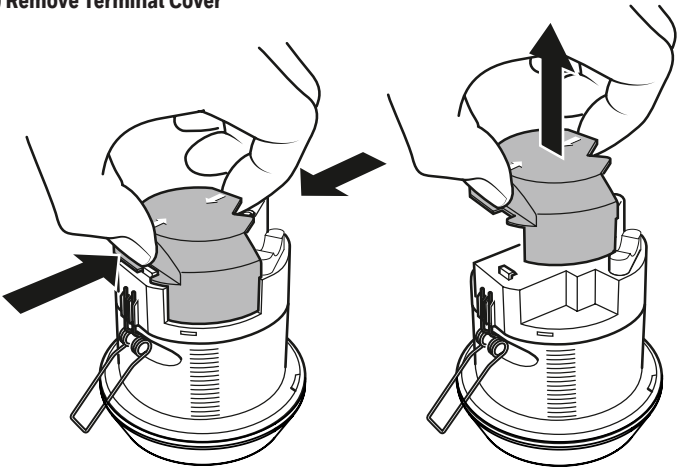
2) Plan DALI Cable Runs

DALI Topology

DALI permits a free topology which means wiring can be done in daisy chain, star or a combination of these. Do not close the loop or ring connections.



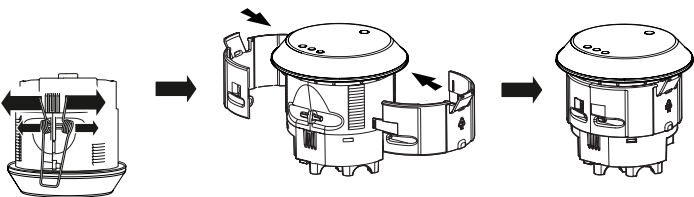
3) Remove Terminal Cover



5) Fit Surface Mount Version

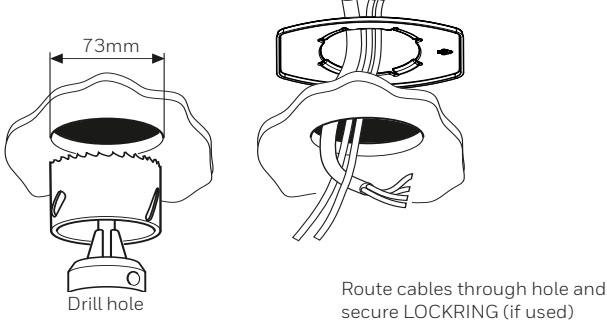
Note: If a surface mount version has been ordered a flush mount version and a surface mount kit will be provided.

5a) Remove springs & Attach Shell



4) Fit Flush Mount Version

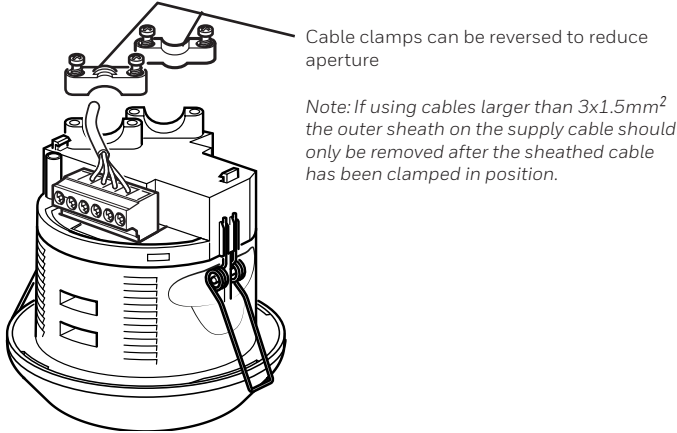
4a) Prepare Mounting Location and Run Cables



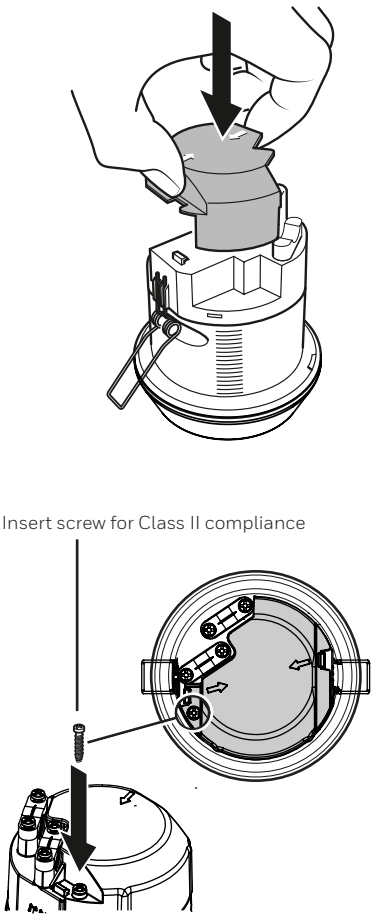
4b) Make Electrical Connections

Make the electrical connections to the sensor - see "Make Electrical Connections"

4c) Fix Cable Clamps (optional for 1mm²-2.5mm² sheathed round cables)

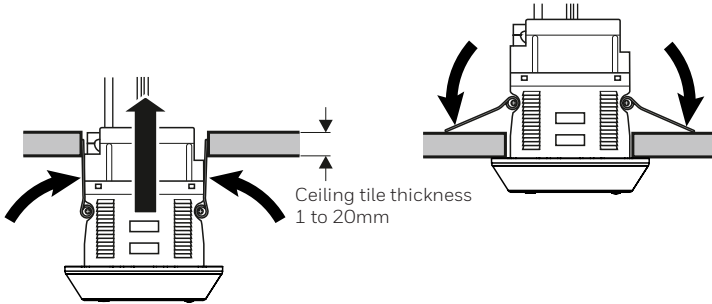


4d) Replace the Terminal Cover



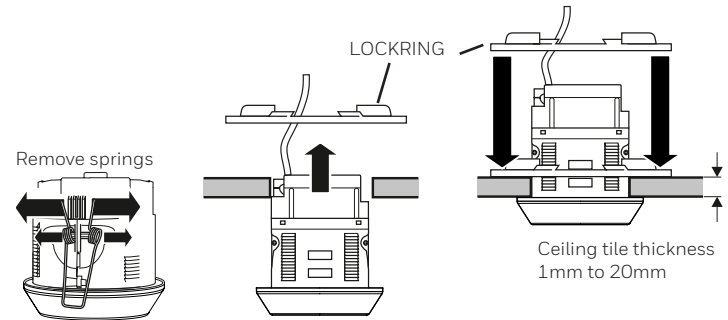
4e) Fix to Ceiling

Standard Method



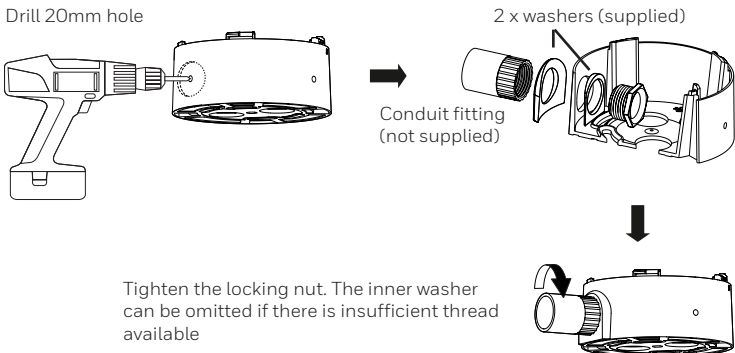
LOCKRING Method

The LOCKRING cannot be used when there is no access to ceiling void.



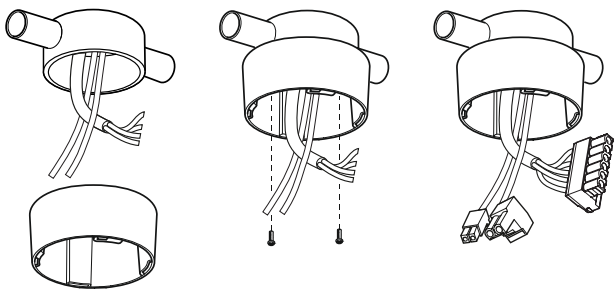
NOTE: To remove sensor rotate LOCKRING and pull up

5b) Attach Conduit Fittings & Cable Glands to Lower Housing (if required)



5c) Prepare Mounting Location and Run Cables

The sensor may be mounted to any suitable surface, but is most commonly fixed to a conduit stop-end (BESA) box or bushed to trunking. change image

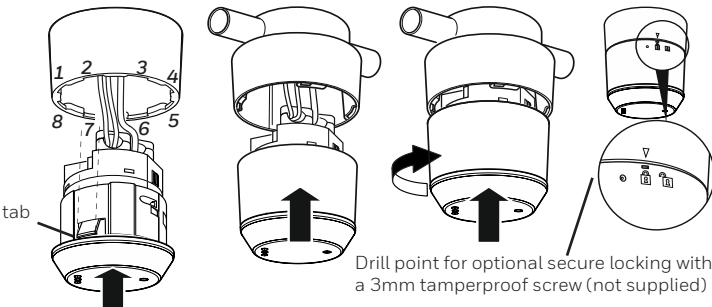


5d) Make Electrical Connections

Make the electrical connections to the sensor - see "Make Electrical Connections"

5e) Fix to Ceiling

8 segments on the collar allow up to four different rotational positions for the sensor, when inserting the tabs into slots (1-8).

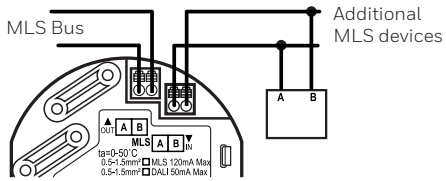


6) Make Electrical Connections

WARNING: Do NOT power up until installation is complete.

WARNING: ALL plug-in terminals MUST be connected and the cover must be in place before the unit is powered up.

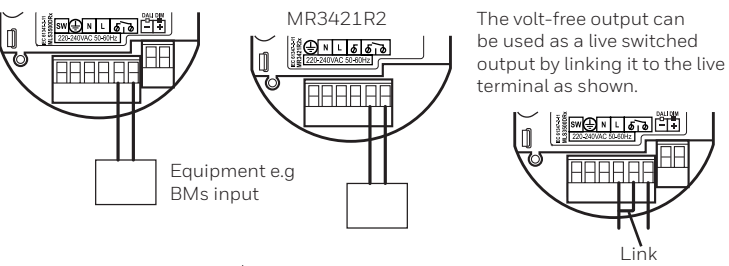
MLS Bus Connections - MLS variants



Terminal type
Terminal capacity
Recommended cable
Max cable length

Screwless with release lever
1 x 0.5-1.5mm² solid or stranded.
1.5mm² unscreened twisted pair
Up to 1500m - If using 1.5 mm² unscreened twisted pair cable.

Volt-free Output Connections



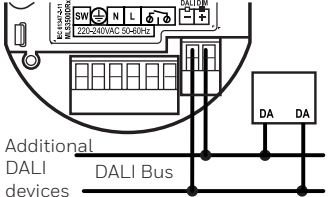
Terminal type
Terminal capacity
Recommended cable
Switching Capability

Rising cage screw clamp
1 x 0.5-2.5mm² solid or stranded.
2 core 1.5-2.5mm²
10A

DALI Bus Connections - DALI variants

To prevent loose strands being outside the terminal a tool, e.g. a screwdriver, must be used to push the button on the terminal when stranded conductors are inserted.

Warning: Do not connect to 230V.



Warning: The DALI Bus is not classified as SELV. The same procedures and safeguards must be applied as when working with mains voltage.

Terminal type
Terminal capacity
Recommended cable

Rising cage screw clamp
1 x 0.5-1.5mm² solid or stranded.
2 core 0.5-1.5mm²

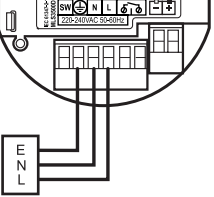
Max cable length	Copper	Cross Section	Maximum cable length at 25 °C
	0.5 mm ²	112m	
	0.75 mm ²	168m	
	1.0 mm ²	224m	
1.5 mm ²	300m		

Max devices

25 DALI control gears (ballasts or drivers) - 50 mA

Note:
1. DALI gears (ballasts or drivers) are normally wired from an unswitched supply.
2. Ballasts or drivers must be DALI Control Gears complying to IEC 62386 V1 or V2.

Power Connections

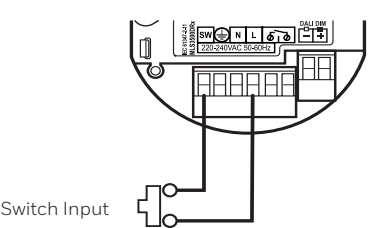


Terminal type
Terminal capacity
Recommended cable
Max cable length
Operating voltage
Quiescent power consumption
Recommended circuit protection

Rising cage screw clamp
1 x 0.5-2.5mm² solid or stranded.
Refer to appropriate regulations
Refer to appropriate regulations
220 – 240V 50-60Hz.
1W
10A MCB

Note: In accordance with current wiring regulations a means of disconnection (e.g switch) must be incorporated into the fixed wiring.

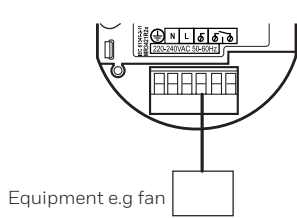
Switch Input (Mains) Connections - Not MR3421R2



Terminal type
Terminal capacity
Recommended cable
Max cable length
Operating voltage
Power consumption

Rising cage screw clamp
1 x 0.5-2.5mm² solid or stranded.
Derive from appropriate wiring regulations
Derive from appropriate wiring regulations
100 – 240V 50-60Hz.
Negligible

Switch Live Output Connections - MR3421R2F only

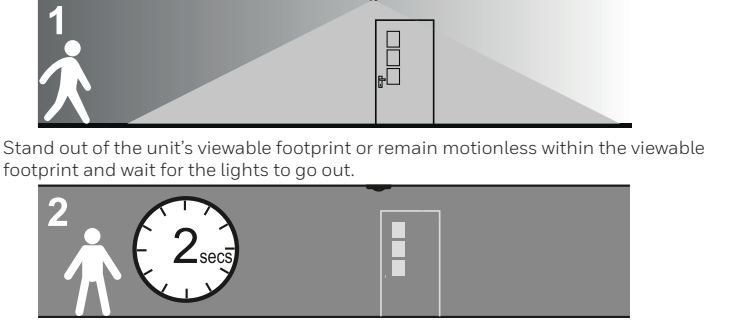


Terminal type
Terminal capacity
Recommended cable
Operating voltage

Rising cage screw clamp
1 x 0.5-2.5mm² solid or stranded.
2 core 1.5-2.5mm²
100 – 240V 50-60Hz.

7) Perform Walk Test

In order to verify correct installation, walk testing is recommended. Follow the instructions provided with the QuicksetPro (QSP). During the walk test the connected lights will be switched off until movement is detected.



Stand out of the unit's viewable footprint or remain motionless within the viewable footprint and wait for the lights to go out.

Wait a further 2 seconds for the unit to stabilise then make a movement, the lights should come back on. Observe that the detection / non-detection is as expected.

8) Out of Box Behaviour

This range of products features a rich set of adjustable parameters that may be programmed via the hand-held infrared commissioning tools in order to create a sophisticated lighting control installation.

Time Delay	20 Minutes
Photocell Mode	Ignore (Always turn on when occupied)
Occupancy Mode	Presence (lights Auto On, Auto OFF)
Movement Sensitivity	Medium

9) Diagnostics

LED indications are provided to help with fault-finding.		
LED indication	Meaning	
Green	Movement detected	
R R R	Hardware or firmware fault. Check DALI connections for shorts.	
B B B	IR communication in progress	
Flashing Blue		

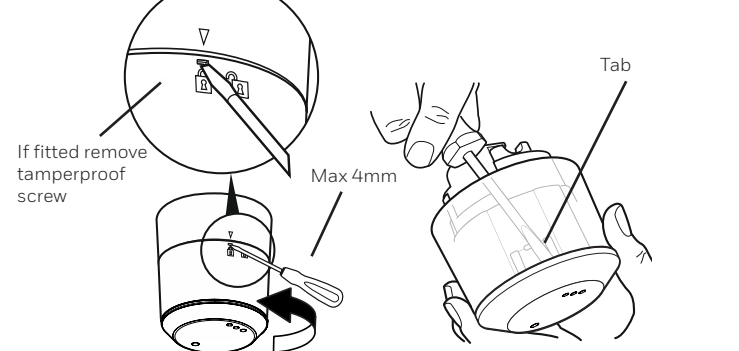
10) Configuration

Once installed the unit must be configured using the QuicksetPro (QSP) to create the required lighting control installation - see the QuicksetPro Engineering Manual - W6001 available from www.Ex-Or.com. The QSP provides context help on the individual parameters.




Uninstall surface mount variants

Insert a flat headed screwdriver into the slot as shown and twist the collar anti-clockwise to release. To separate the sensor from the surface mount casing, push a flat headed screwdriver onto the tab via the inside void of the casing and pull the unit appart.



Specifications

Photocell	Adjustable 0 - 5000 lux (with a 20% reflective work plane)
IP Rating	IP20
Operating temperature	0°C to 50°C
Dimensions	
Flush mounting	Height 93.5mm, diameter 87mm
Surface mounting	Height 108.5mm, diameter 87mm
Weight	
Flush mounting	154g
Surface mounting kit	259g
Colour	White (RAL9010)
Material	Flame retardant PC/ABS
Max recommended load	10 Amps per output (not exceeding 10A in total)



This symbol on our product shows a crossed-out 'wheelie-bin' as required by law regarding the Waste of Electrical and Electronic Equipment (WEEE) disposal. This indicates your responsibility to contribute in saving the environment by proper disposal of this waste i.e. Do not dispose of this product with your other wastes. To know the right disposal mechanism please check the applicable law.

At the end of their useful life the packaging and product should be disposed of via a suitable recycling centre.

Do not dispose of with normal household waste. Do not burn

EU contact for regulatory questions:
PEHA Elektro GmbH & Co.
KG Gartenstraße 49,
58511 Lüdenscheid
Germany
Web: www.peha.de

Honeywell
St Marks Court, North Street
Horsham, West Sussex RH12 1BW
Tel: +44 (0)1942 719229
Web: www.ex-or.com

