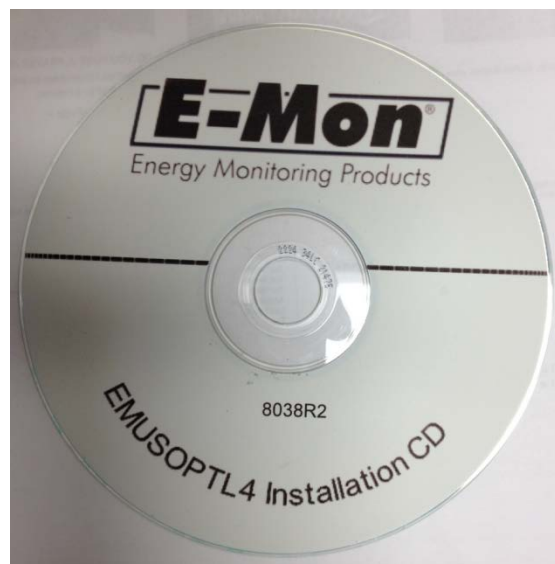


## Material Number E10040 USB Key

### USB Key Driver Installation and Multi-Mon RS485 Wiring Instructions



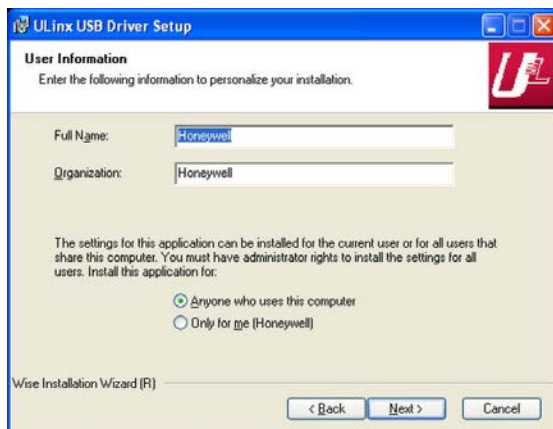
## USB Key Driver Installation Instructions for Windows 7, 8, 8.1

***\*Important: Do Not Plug the USBkey into the USB port of the PC yet.***

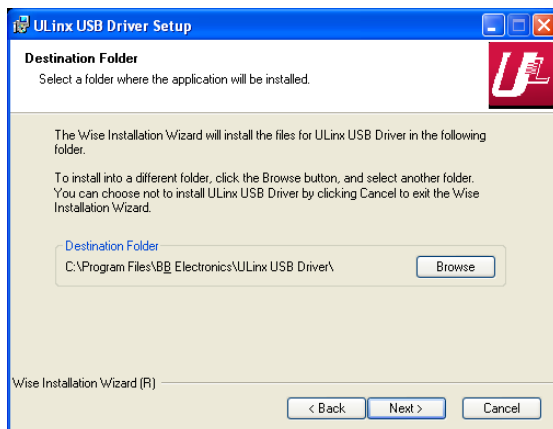
1. Load the USB software disk
2. Double click Setup.exe
3. Click Next



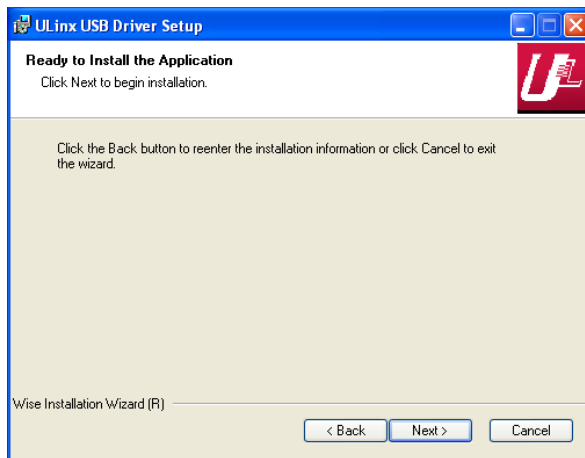
4. Complete Full Name and Organization fields. Click "Anyone who uses this computer" click Next.



5. Click Next



6. Click Next



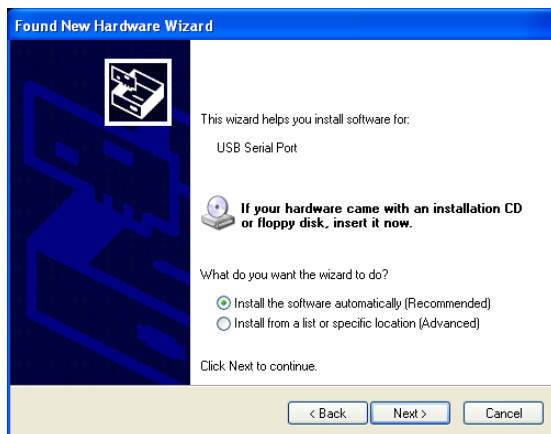
7. Click Finish



8. Plug in the USBkey into the USB Port. USB 1.0 & 2.0 Versions only USB 3.0 is not supported.  
At this pop up window, select No not at this time.



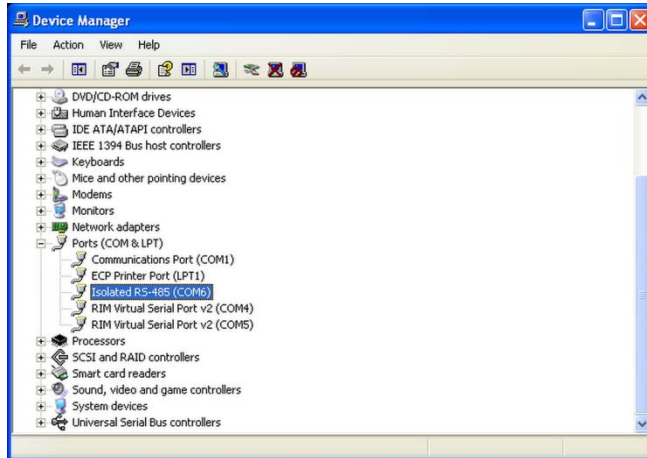
9. Click Next. Click Install software automatically Click Next.



10. Successful installation click Finish.



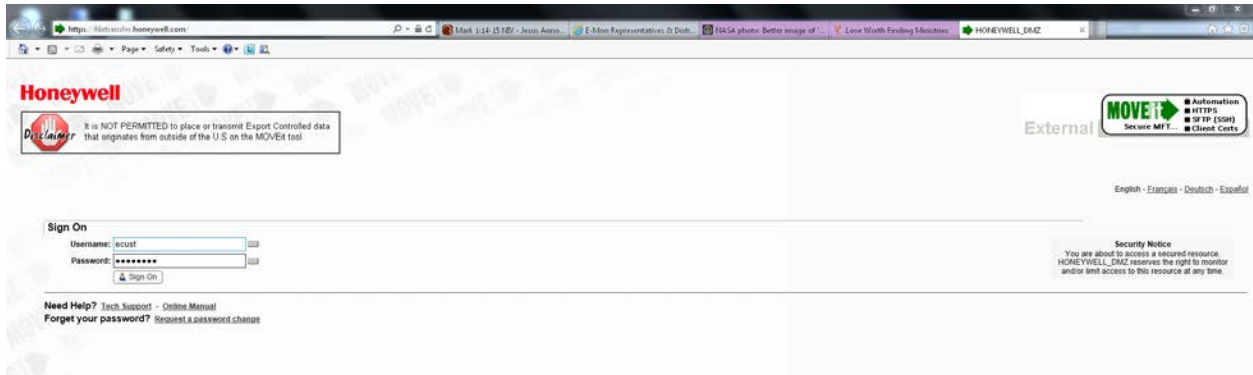
11. Verify the USBkey has successfully installed and the windows COM port assignment.
12. Go to the windows start icon → control panel → double click on System icon → Hardware → Device Manager
13. Scroll down to Ports (Com & LPT) click the + sign to the left Ports (Com & LPT)
14. Document Isolated RS-485 Communication port assigned by windows. In this example, it is COM6.



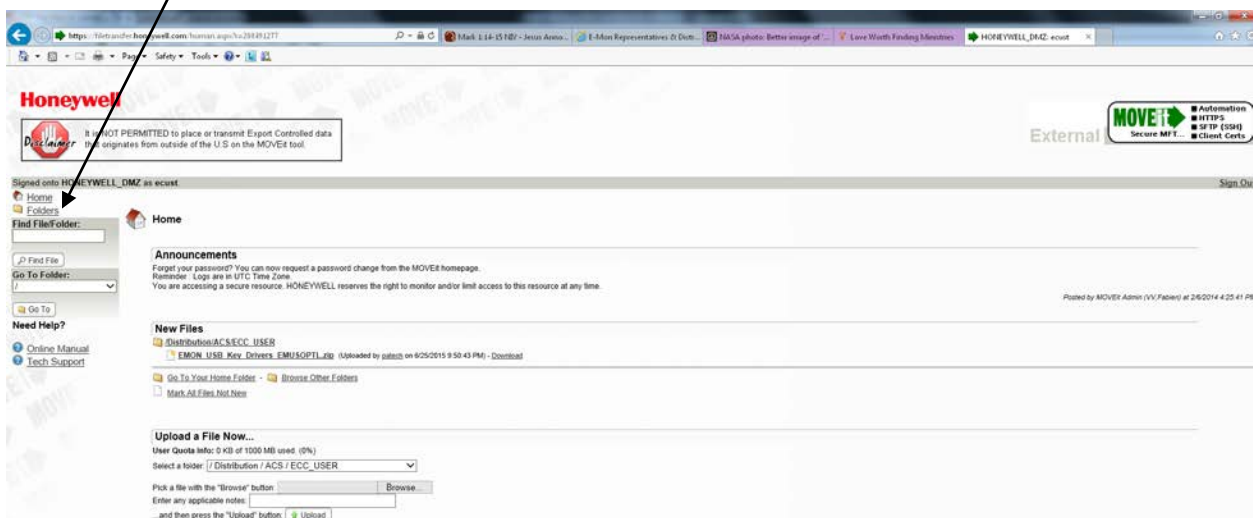
## How to Access Honeywell E-Mon FTP Site

Don't have a copy of the USB Driver Disk? Go to the Honeywell E-Mon FTP site and download the zip file.

1. Open web browser and go to <https://filetransfer.honeywell.com>



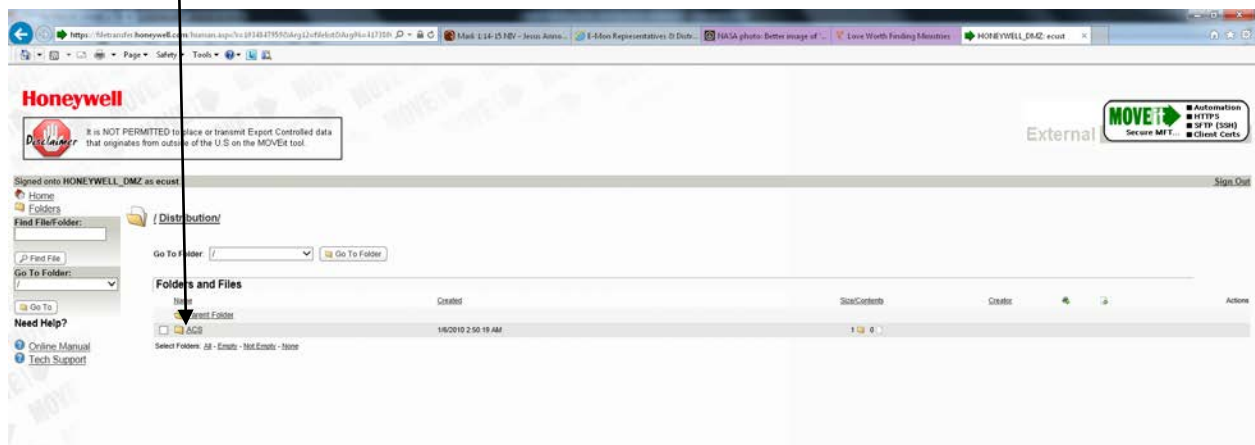
2. Username is ecust
3. Password is Emon1981 (uppercase E)
4. Click Folders



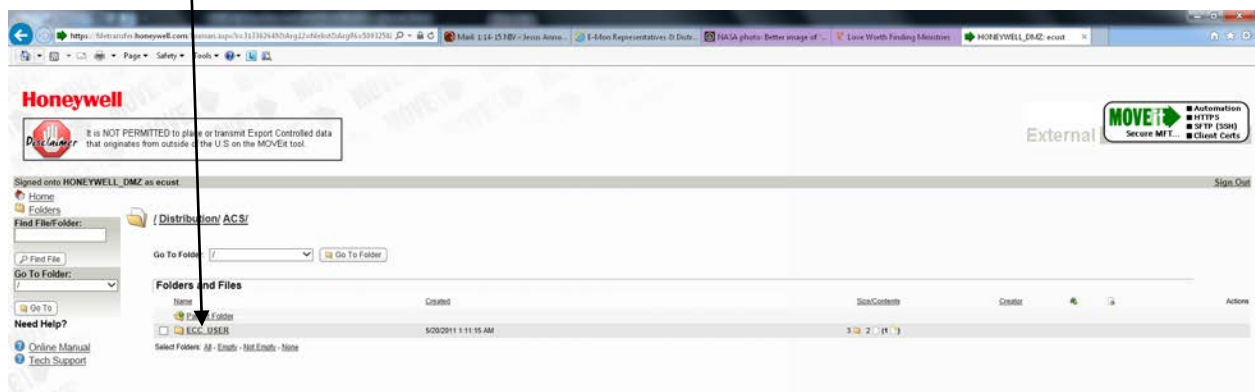
5. Click Distribution



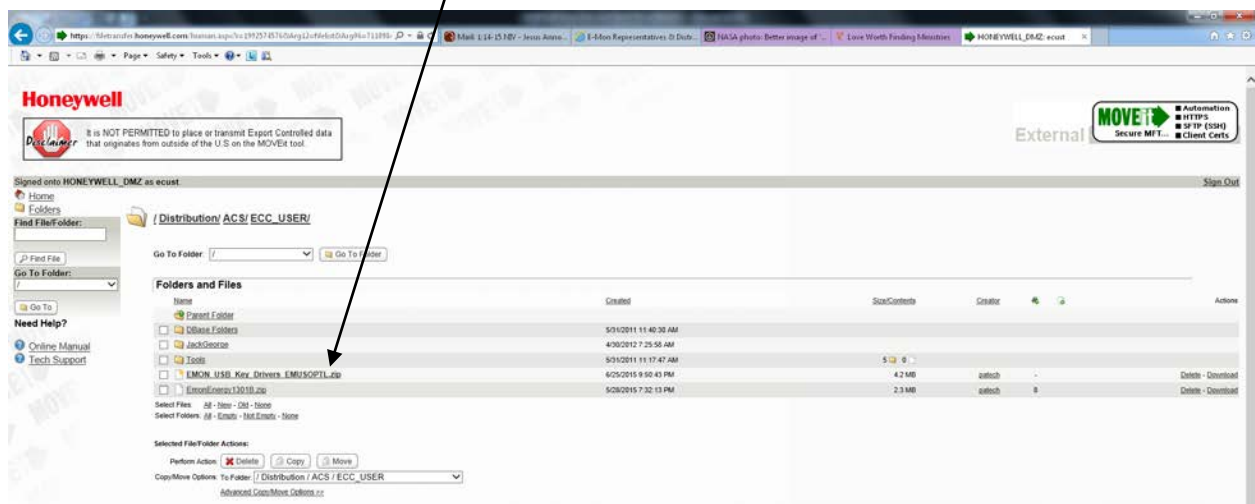
6. Click ACS



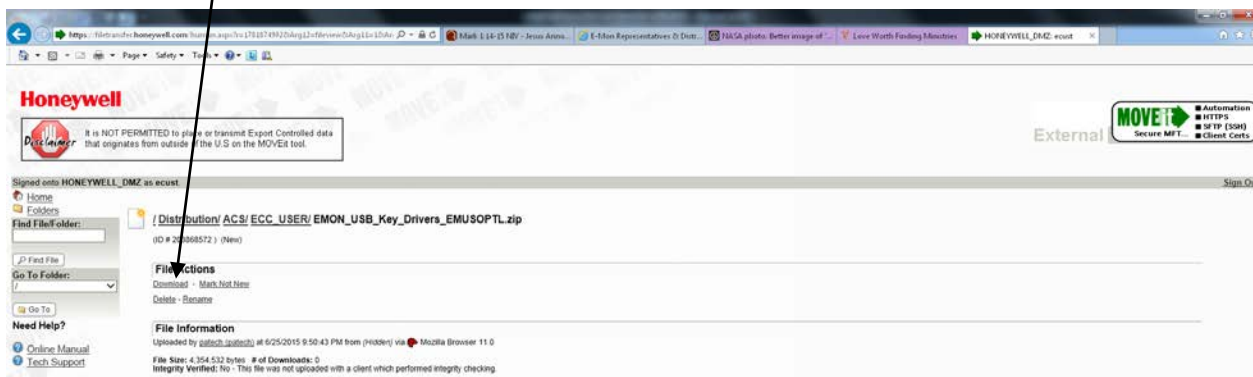
7. Click ECC User



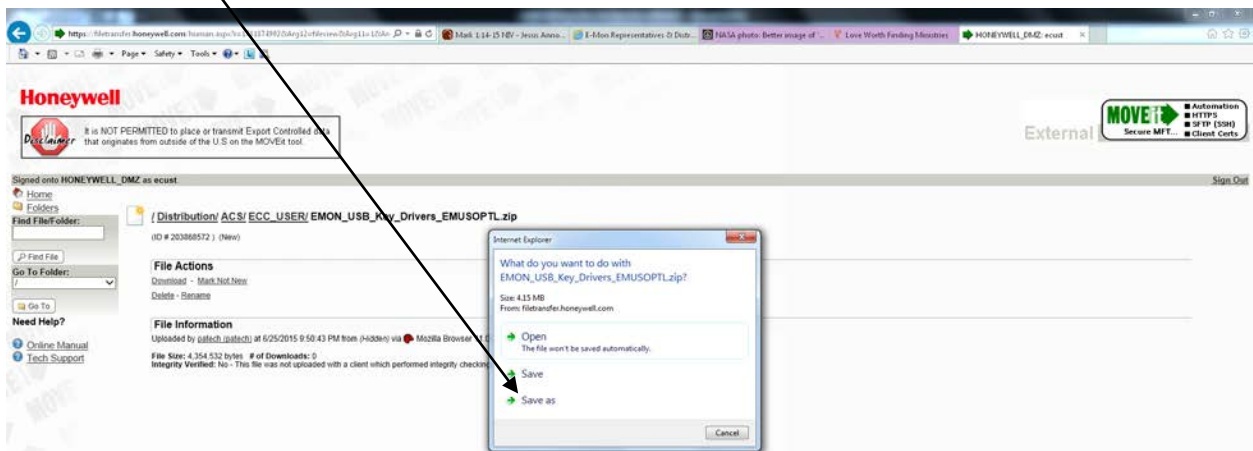
8. Click EMON USB Key Drivers EMUSOPT.zip (file order may not be as pictured)



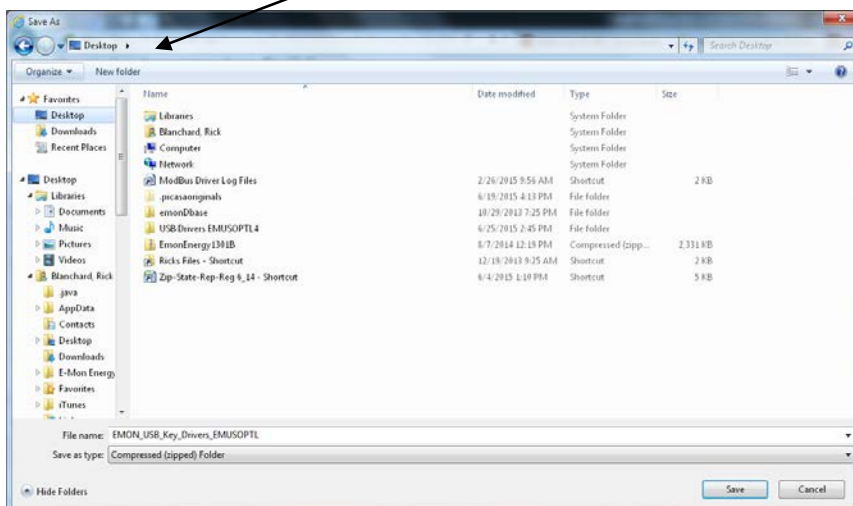
9. Click Download



10. Click Save As

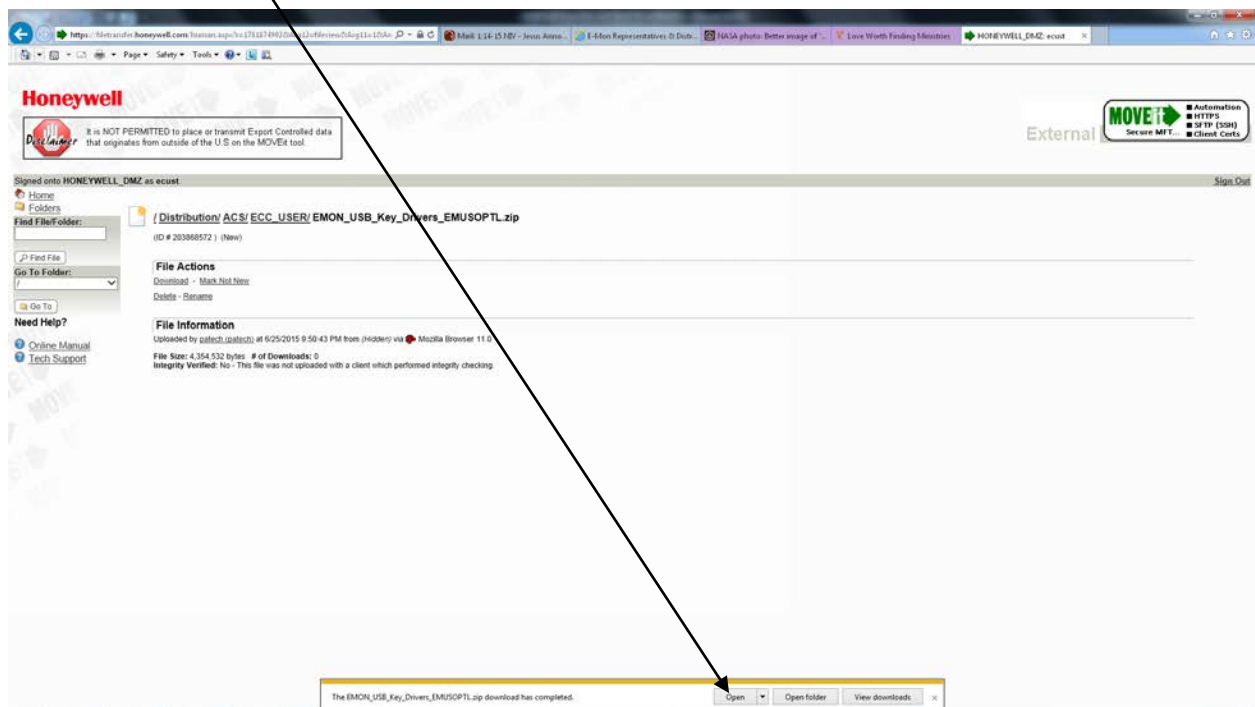


11. Save the file to your desktop

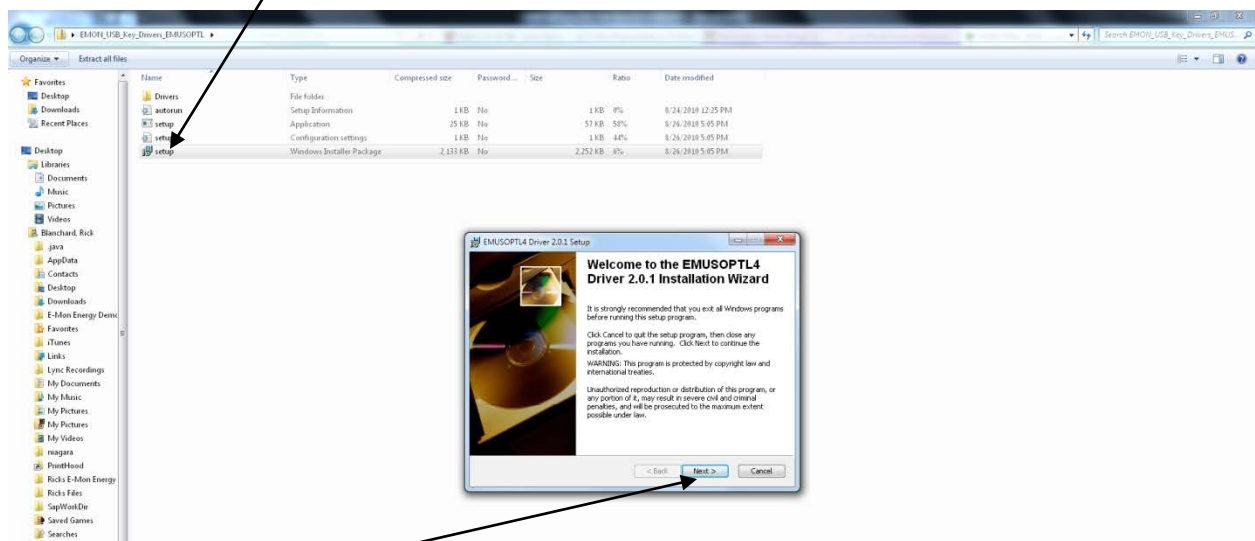




12. Open the file



13. Double click setup icon to run the installation Wizard



14. Click Next >

15. Follow the steps from page two starting at step 4 all the way through step 27

## Wiring the USB Key to the Multi-Mon RS485 Network COM1 Connector

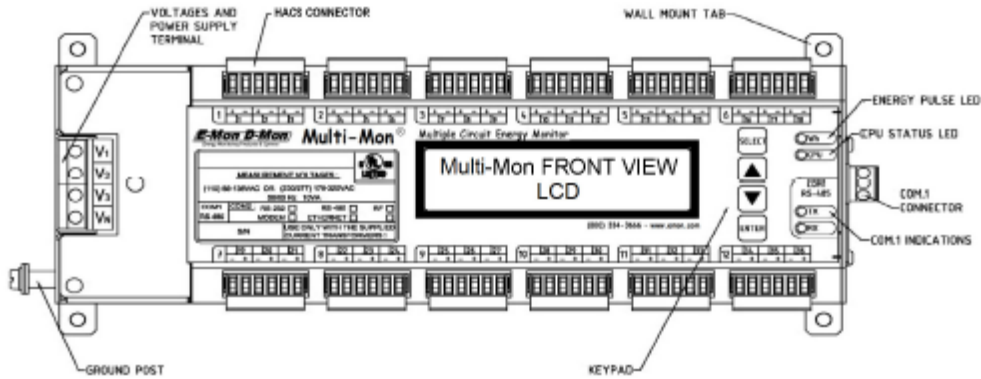


Figure 2-14 Multi-Mon Front View

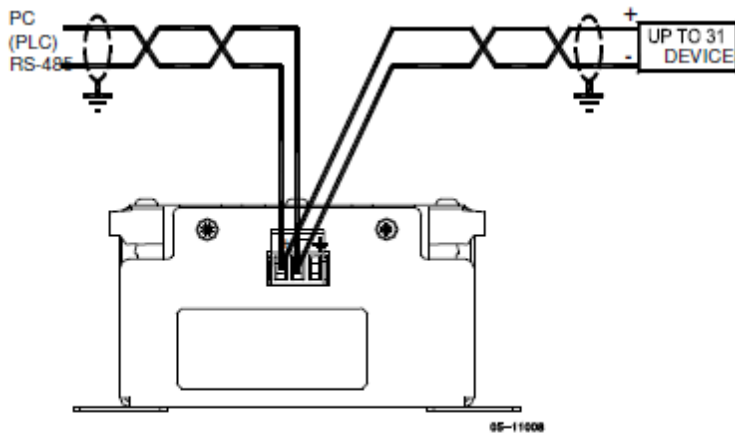


Figure 2-9 RS-485 2-wire connection

Multi-Mon & USBkey RS485 Screw Terminal Pin Out Wiring	
Multi-Mon	USBkey
GDN not used	GDN not used
+	RDB (+)
-	RDA (-)