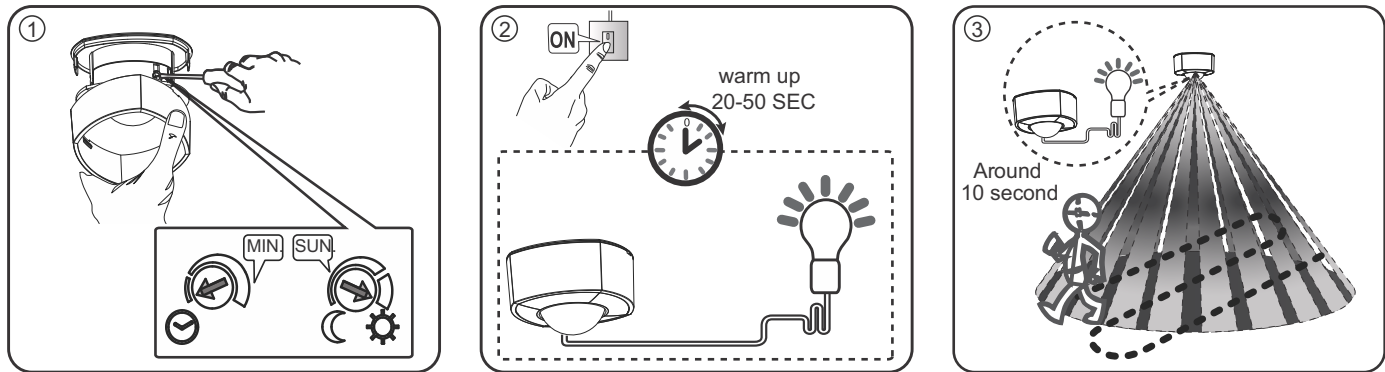
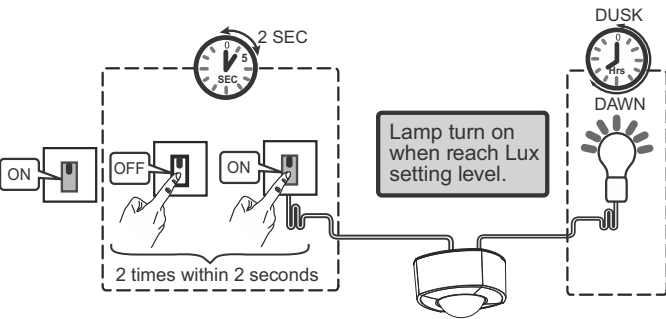


WALK TESTING

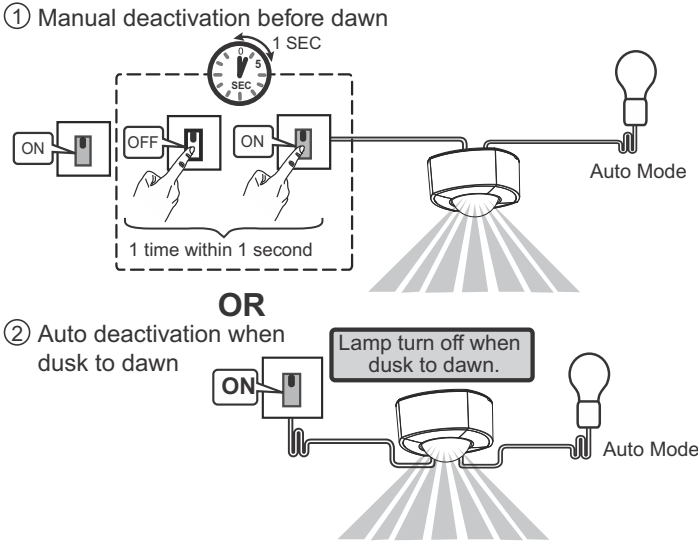


MANUAL OVERRIDE OPERATION

Activate Manual Override Operation



Deactivate Manual Override Operation



SWITCHABLE LOAD

	Max 2000W @230V		Max 120W
	Max 500W		Max 400W
	Max 400W		Max 75W

TECHNICAL SPECIFICATIONS

Detection Range: Up to 6 metres diameter (3m Radius) at mounting height of 2.5m
Detection Angle: 360°
Power Supply: 230Vac 50Hz
Maximum Switchable Load: Max load current 10A
Incandescent / Halogen Max 2000W
Fluorescent lamp (magnetic) Max 500W
Fluorescent lamp (electronic ballast) Max 400W
Low energy (CFL) Max 120W
LED lamp Max 400W
Fan Max 75W
Time On Adjustment: 5 seconds - 15 minutes
Dusk Level Adjustment: Day & night or night only operation
Operating temperature: 0 to 40 degrees
Environment Protection: For ceiling mount - IP44
For flush mount - IP44 (at sensor portion only)
- IP20 (ceiling board onwards)

GUARANTEE
The company undertake to replace or repair, at its discretion should it become defective within a period of 1 year after delivery, solely as a result of faulty materials and/or workmanship. Understandably, if the product has not been installed, maintained or used appropriately, or if an attempt has been made to rectify, dismantle or alter the product in any way, the guarantee will be invalidated. This guarantee states the company's entire liability. It does not extend to cover consequential loss or damage or installation cost arising from the defective product. This guarantee does not restrict or infringe the normal statutory rights of the customer.

COMPLIANCE WITH E.U. DIRECTIVES
Apart from meeting the appropriate British standards, products are manufactured in accordance with BS EN ISO 9002 and comply with the LV (72/23/EEC) Directive.



Honeywell
EU contact for regulatory questions:
PEHA Elektro GmbH & Co.
KG Gartenstraße 49,
58511 Lüdenscheid Germany
Web: www.peha.de
Honeywell
St Marks Court, North Street
Horsham, West Sussex RH12 1BW
Tel: +44 (0)1942 719229
Web: www.buildings.honeywell.com/gb/e
n/brands/our-brands/ex-or

LS1000R LightSpot 360° Dual Mount PIR installation and operating instructions

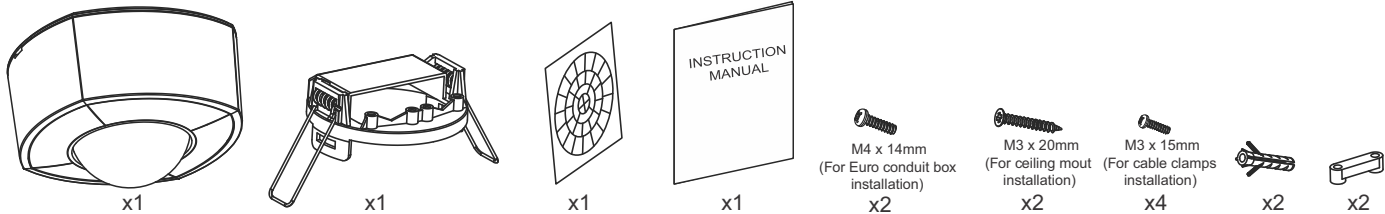


Only suitably qualified personnel should install this equipment

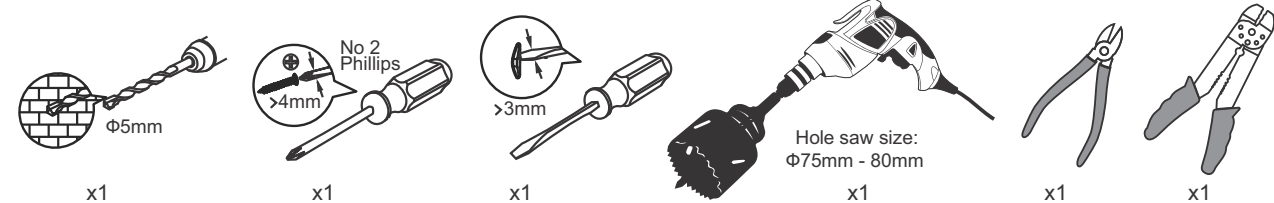
- To prevent electrocution, do not work on any appliance live. Turn off mains before commencing work, lock-out tag-out must be followed.
- The current editions of the IEE Wiring Regulations (BS7671) and Buildings Regulations must be followed for installation.
- Ensure all terminal screws are fully tightened and product is securely fixed to its mounting box prior to turning on the mains supply.

Honeywell

PACK CONTENTS



REQUIRED (Warning: Use only VDE Certified Tools)



MOUNTING/ INSTALLATION STEPS

Surface Mount

