



# Honeywell WEBS-N4 Installation Guide

Version 4.11.0.142

May 2022

# Table of Contents

---

<b>1</b>	<b>ABOUT THIS GUIDE .....</b>	<b>3</b>
<b>2</b>	<b>PLATFORM REQUIREMENTS FOR WEBS SUPERVISOR.....</b>	<b>3</b>
2.1	SOFTWARE DEPENDENCIES.....	4
2.2	HOW TO USE THE WEBS ALARM PORTAL.....	5
2.3	USING WEB LAUNCHER WITH WEBS-N4.11.....	6
<b>3</b>	<b>WEBSTATION-N4 INSTALLATION .....</b>	<b>7</b>

# 1 About this Guide

This document is part of the WEBS-N4 documentation library. The WEBS-N4.11.0.142 software is distributed via the [Honeywell Buildings Forum](#). The details of the latest version of tools are mentioned in the *WEBS-N4.11 Software Release Bulletin*.

For the latest product data, visit [customer.honeywell.com](http://customer.honeywell.com) or [Honeywell Building Controls](#).

Refer to the [Honeywell Buildings Forum](#) for all the latest WEBS-N4 product-related documentation.

## 2 Platform requirements for WEBS Supervisor

<b>Processor</b>	Intel® Xeon® CPU E5-2640 x64 (or better), compatible with dual- and quad-core processors.
<b>Operating System</b>	Windows 10 (64 bit), Windows Server 2016, Windows Server 2019 (64 bit), Red Hat Enterprise Linux 7.7, 8.1 (64bit)
<b>Mobile operating system</b>	iOS 12, iOS 13, Android 8 Oreo, Android 9 Pie, Android 10.0
<b>Browser</b>	Chrome, Firefox, Microsoft Edge, Niagara Web Launcher
<b>Mobile Browser</b>	Safari on iOS, Chrome on Android, Microsoft Edge
<b>Database</b>	MySQL 5.7, 8.0, 9.0; Oracle Express 11g; Oracle 12, 18, 19c; MSSQL 2012, 2016, 2017, 2019
<b>Memory</b>	6 GB minimum, 8 GB or more recommended for larger systems (If a 64-bit installation).
<b>Hard Drive</b>	4 GB minimum, more recommended depending on archiving requirements. 10 GB is recommended for any Supervisor.
<b>Network Support</b>	Ethernet adapter (10/100 Mb with RJ-45 connector), 100Mbit or 1Gbit NIC *network interface card) with TCP/IP support.
<b>Connectivity</b>	Full-time high-speed ISP connection recommended for remote site access (i.e., T1, ADSL, cable modem) and IPv6 compliant.
<b>Display</b>	Video card and monitor capable of displaying 1024 x 768-pixel resolution, 1080p (1920 x 1080) minimum resolution recommended.

### IMPORTANT NOTE

WEBS-N4.11 supports only 64-bit installations. Installing WEBS-N4.11 would generate a new host ID if you installed a 32-bit in the previous WEBS-N4 versions.

It is recommended to use the Echelon OpenLDV 5 Network Driver for Windows. For details refer to, <https://www.echelon.com/software-downloads?ele=153-0411-01B>.

## 2.1 Software Dependencies

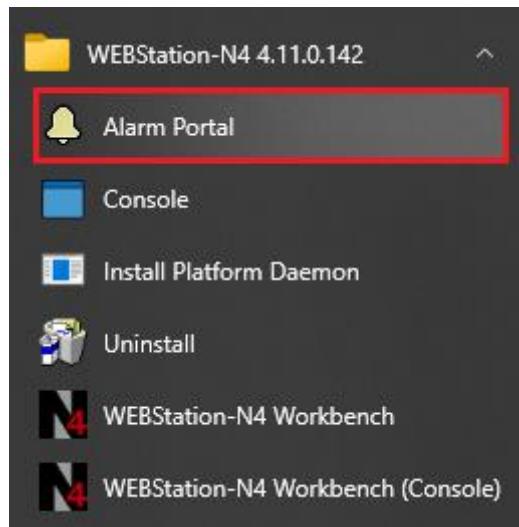
WEBS-N4 system’s software includes operating systems, browsers, relational databases, and video drivers. Some software modules run on the controller and others on the supervisor PC.

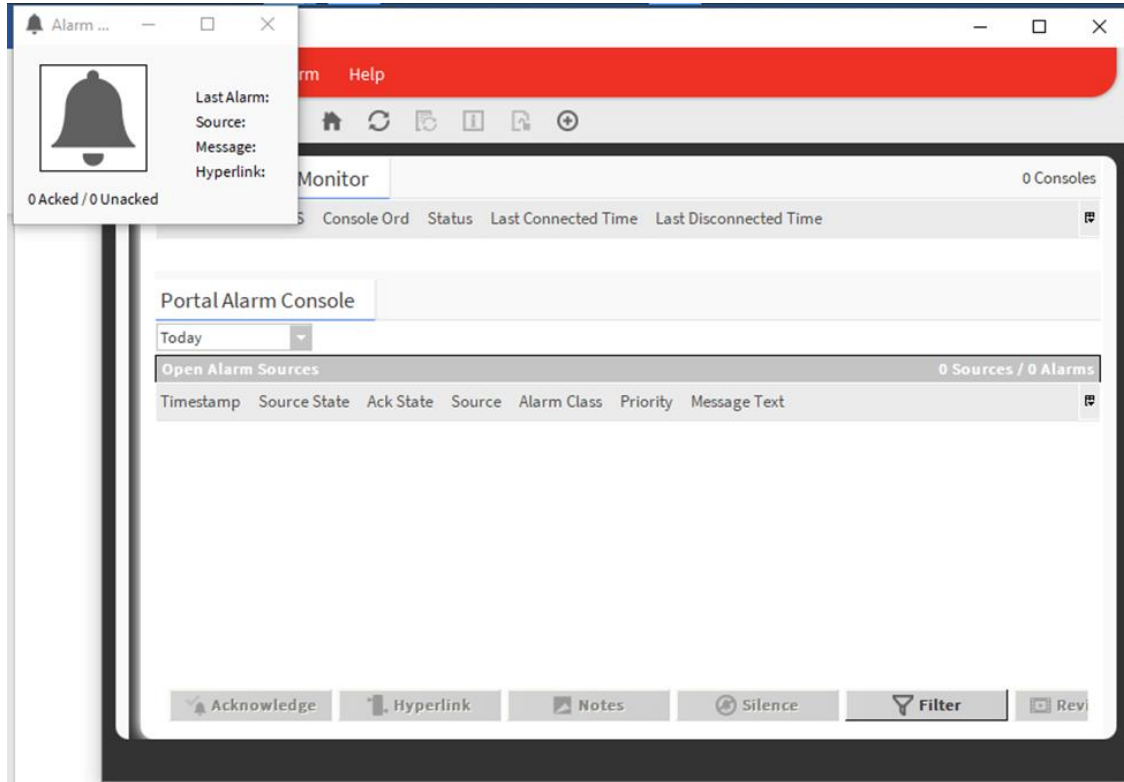
System / driver	Supported	Remarks
<b>Operating Systems</b>	<ul style="list-style-type: none"> <li>▪ Windows 10 (64-bit)</li> <li>▪ Windows Server 2016</li> <li>▪ Windows Server 2019</li> <li>▪ Red Hat Enterprise Linux 7.7/8.1 (64-bit)</li> </ul>	<p>From the release of WEBS-N4.9, the following operating systems are no longer supported:</p> <ul style="list-style-type: none"> <li>▪ Windows 7 x86</li> <li>▪ Windows 7 x64</li> <li>▪ Windows 8.1 x86</li> <li>▪ Windows 10 x86</li> <li>▪ Windows Server 2012 x64</li> </ul>
<b>Supported web browsers</b>	<ul style="list-style-type: none"> <li>▪ Google Chrome (mobile, tablet, desktop)</li> <li>▪ Mozilla Firefox 5.0 and later</li> <li>▪ Microsoft Edge</li> <li>▪ Safari (mobile, tablet)</li> <li>▪ Niagara Web Launcher</li> </ul>	<p>For configuration only, use Workbench and Niagara Web Launcher. The Web Launcher application supports any browser view that requires the WebApplet.</p> <p>Google Chrome 75 supports only the monitoring and loading of HTML views.</p> <p><b>NOTE:</b> The following browsers do not support the WebApplet (Wb Web Profile):</p> <ul style="list-style-type: none"> <li>▪ Google Chrome version 45 and higher</li> <li>▪ Microsoft Edge</li> <li>▪ Firefox version 42 and higher</li> <li>▪ Opera</li> </ul>
<b>Mobile operating systems</b>	<ul style="list-style-type: none"> <li>▪ Android 8 Oreo</li> <li>▪ Android 9 Pie</li> <li>▪ Android 10</li> <li>▪ Android Q</li> <li>▪ iOS 12</li> <li>▪ iOS 13</li> </ul>	
<b>JRE Plug-in for browsers (applicable to the WebApplet environment)</b>	Oracle Java Version 8, update 241	<p>High-level sanity test done with the latest JRE8 update 212 dated 18 April 2019.</p> <p>Web Launcher supports both 32-bit and 64-bit JRE</p>
<b>Relational database servers</b>	<ul style="list-style-type: none"> <li>▪ MySQL Server 8.0</li> <li>▪ Oracle 19c</li> <li>▪ MS SQL Server 2016</li> <li>▪ MS SQL Server 2017</li> <li>▪ MS SQL Server 2019</li> <li>▪ MySQL 8.0 and MySQL 5.7 are both tested with connector version: 8.0.13.</li> </ul>	<p>From the release of WEBS-N4.9, the following database versions are no longer supported:</p> <ul style="list-style-type: none"> <li>▪ MS SQL Server 2012</li> <li>▪ Oracle 11g</li> <li>▪ Oracle 12g is not supported.</li> </ul> <p>Controller stations use an HSQL database, which is provided.</p>

System / driver	Supported	Remarks
	<ul style="list-style-type: none"> <li>Connector 5.1.46 works with MySQL 5.7.</li> </ul>	
<b>Virtual Machines</b>	VMWare - EXSi 6.7	
<b>Option Cards</b>	<ul style="list-style-type: none"> <li>NPB-8000-2X-485 (Dual RS-485 option card)</li> <li>NPB-8000-LON (LON option card)</li> <li>Micro SD Card (SRAM Option card)</li> <li>IO-R-16 (NRIO Module)</li> <li>IO-R-34 (NRIO Module)</li> <li>IO-16 (NDIO Module)</li> <li>IO-16-485 (NRIO Module)</li> </ul>	
<b>Drivers</b>	<ul style="list-style-type: none"> <li>BACnet (IP, Ethernet, MSTP)</li> <li>Lon (FTT-10, IP)</li> <li>Modbus (TCP, Async)</li> <li>oBIX</li> <li>SNMP</li> <li>NRIO</li> <li>RDBMS Drivers listed in the database</li> </ul>	
<b>Video drivers</b>	<ul style="list-style-type: none"> <li>nAxis: Axis Video Driver</li> <li>nMilestone: Milestone Video driver (Professional and Professional plus editions)</li> <li>Milestone Xprotect Video driver) Professional plus and Corporate editions)</li> </ul>	<p>Milestone Professional plus (Xprotect Professional) NVR Version 2018 R3 Build: 5924 and 2009 R2</p> <p>Milestone Xprotect Corporate NVR Version: 2019 R3 13.3a Build 44</p>

## 2.2 How to use the WEBS Alarm Portal

1. Navigate to your computer start menu and scroll to the **WEBStation-N4.11.0.142**. Expand **WEBStation-N4.11.0.142** and click on **Alarm Portal**.





## 2.3 Using Web Launcher with WEBS-N4.11

Web Launcher 20.4.2 was recently revamped for WEBS-N4.11 to include essential software dependencies updates along with critical defect fixes. This version of Web Launcher has Java version 8 update 275 and certificate management has been updated to work with WEBS-N4.11 along with any legacy or prospective release. Prior to using Web Launcher with WEBS-N4.11, customer should update Web Launcher accordingly (see steps below).

### How to update Web Launcher?

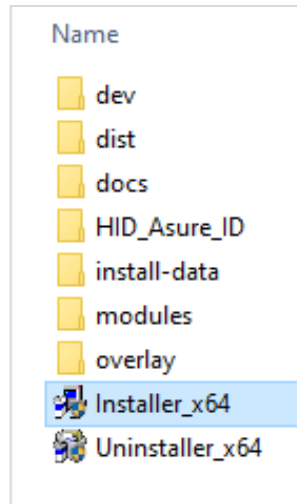
Web Launcher has a feature to check for updates over the internet and prompts the user when a new version is available in the cloud. However, existing version of Web Launcher has a bug that prevents a smooth update. Users will be required to perform a fresh install by downloading the latest version from the cloud via the station web Login page. Click on the Niagara Web Launcher Installer link on the station's Web Launcher Web Page, which can be reached via the link on the Login page itself. Once the download is successful, click on the msi file and follow the installation wizard. You do not have to uninstall the older version. The new installation will automatically update to the latest version.

### 3 WEBStation-N4 Installation

Download the WEBS-N4.11.0.142 software from [Honeywell Buildings Forum](#).

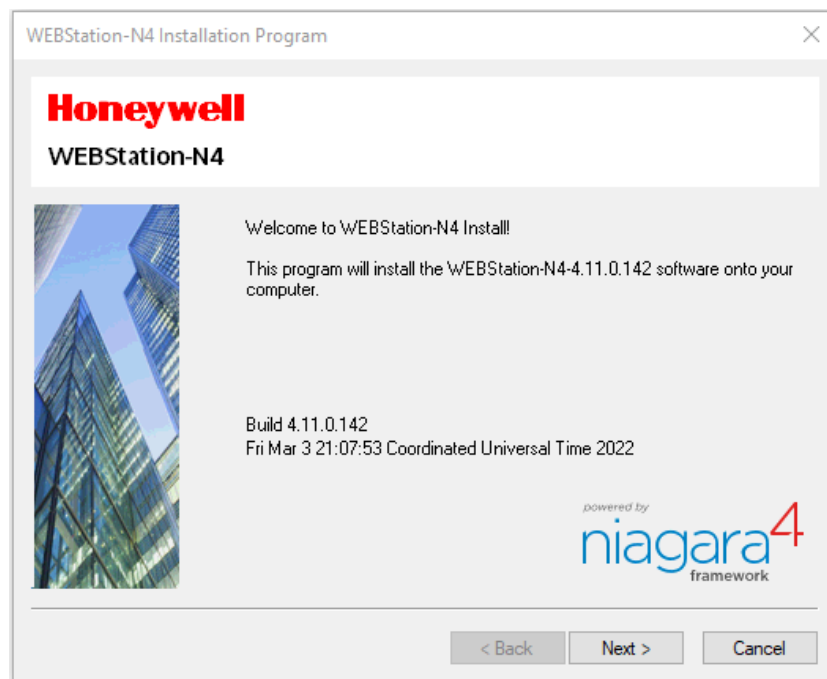
#### Steps to Install the WEBStation-N4.11.0.142

1. Navigate to the WEBStation-N4.11.0.142 folder and double-click the executable file (Installer\_x64.exe).



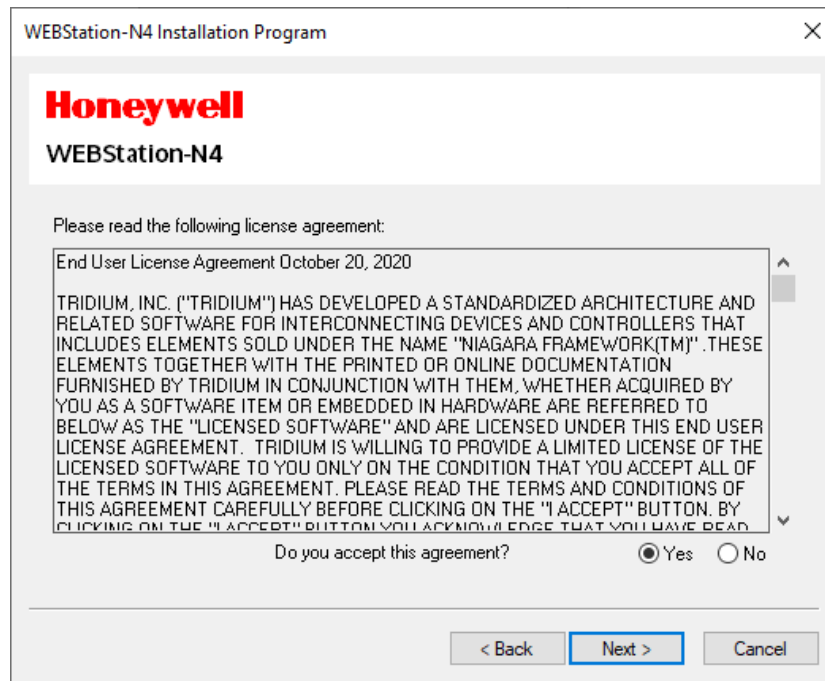
This action displays the WEBStation-N4 Installation Program window.

2. Click **Next** to proceed with the installation.



3. In the End User License Agreement window, select **Yes** to agree with the End User License Agreement or **No** to disagree with the End User License Agreement.

Without accepting the End User License Agreement, the user cannot install the WEBStation-N4.

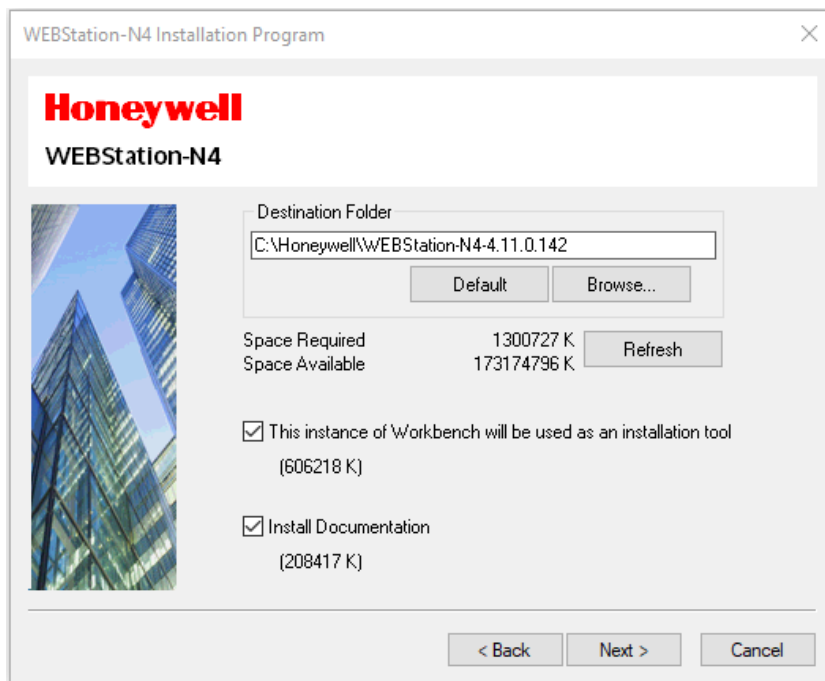


4. Click **Next** to continue the installation.
5. The installer loads the WEBStation-N4 files in the default path i.e., *C:\Honeywell\WEBStation-N4-4.11.0.142*.

If this path does not exist, the installer displays a warning message, click **Yes** to create the folder.

Or

If you want to install the WEBStation-N4 in the other directory, click **Browse** to change the path,



6. Click **Next** to continue the installation.



**NOTE:** If you are performing a new installation, the installer prompts you to set a system passphrase for encryption purposes.

The system passphrase is used to protect sensitive information stored on all WEBS-N4 Stations, and the SD card in the WEB-8000 controllers. The system passphrase is assigned as the file passphrase for “portable files, such as backups and station copies, and is used to encrypt those files. During operations in which you transfer encrypted files to a system (restoring backups, transferring a station, etc.) you are prompted to supply the file passphrase if it doesn’t match the system passphrase. The system passphrase defaults to the factory default platform password.

During commissioning, you will be prompted to change the default system passphrase.

**NOTE:** It is important to remember the system passphrase and keep it safe. If you lose the system passphrase, you will lose access to encrypted data. To change the system passphrase, use the Platform Administration tool.

Niagara Daemon User Home directory is used to store Niagara Daemon user’s data and to run Niagara stations.

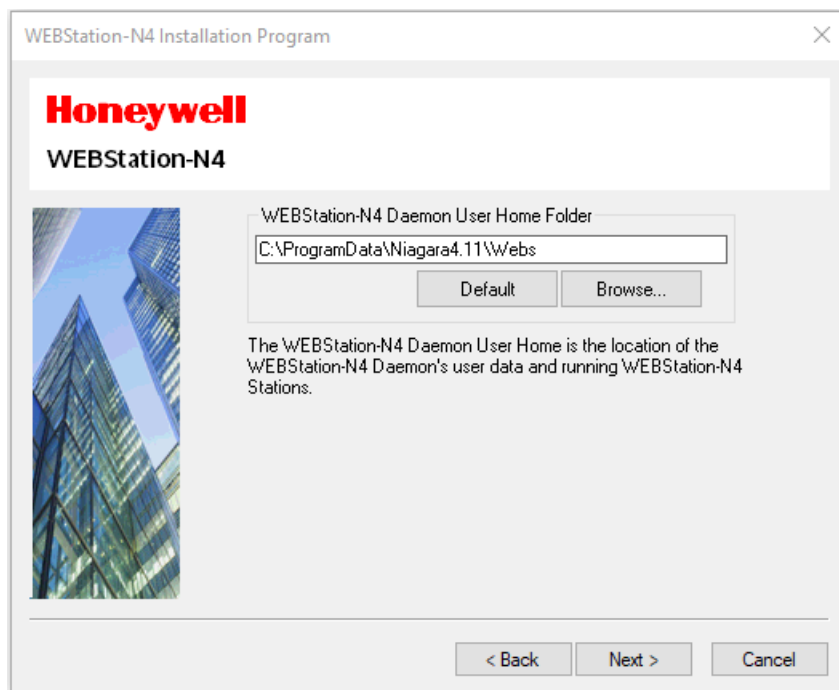
By default, the directory is created under *C:\ProgramData\Niagara4.11\Webs* as shown below.

If this path does not exist, the installer displays a warning message, click **Yes** to create the folder.

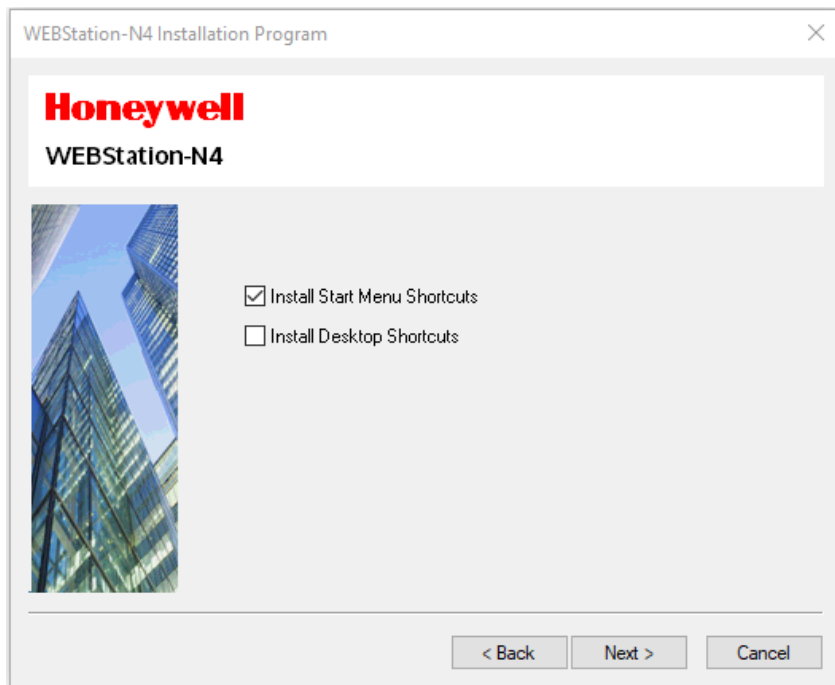
Or

If you want to install the WEBStation-N4 in the other directory, click **Browse** to change the path,

7. Click **Next** to continue.

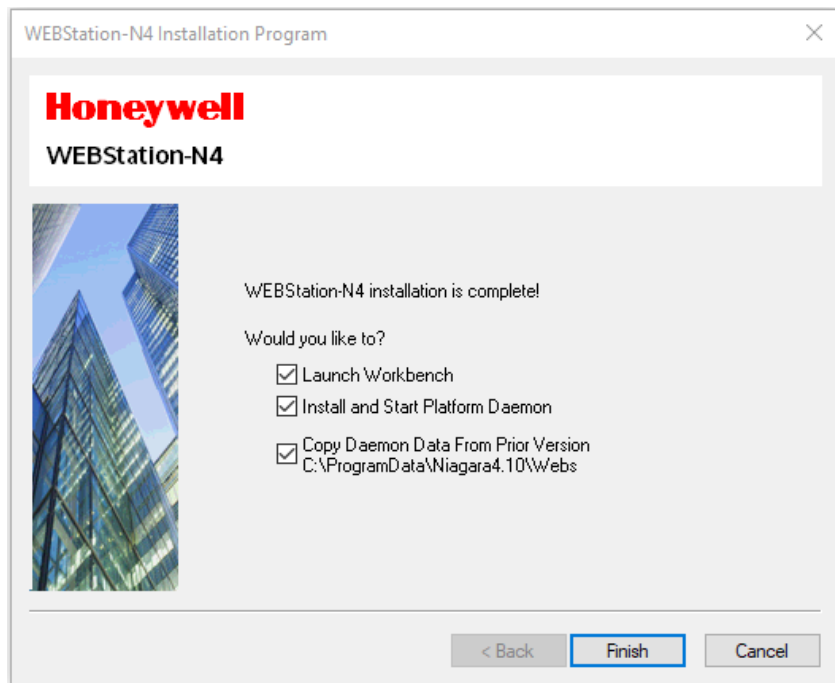


8. If the user wants to create Start Menu or Desktop shortcuts, select the shortcuts options.
9. Click **Next** to run the installation.



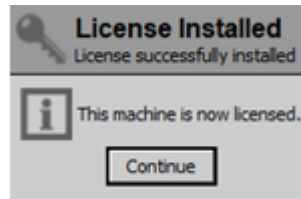
After completing the installation, the installer displays the message “WEBStation-N4 installation is complete”.

10. Select the required options and click **Finish** to complete the installation process.

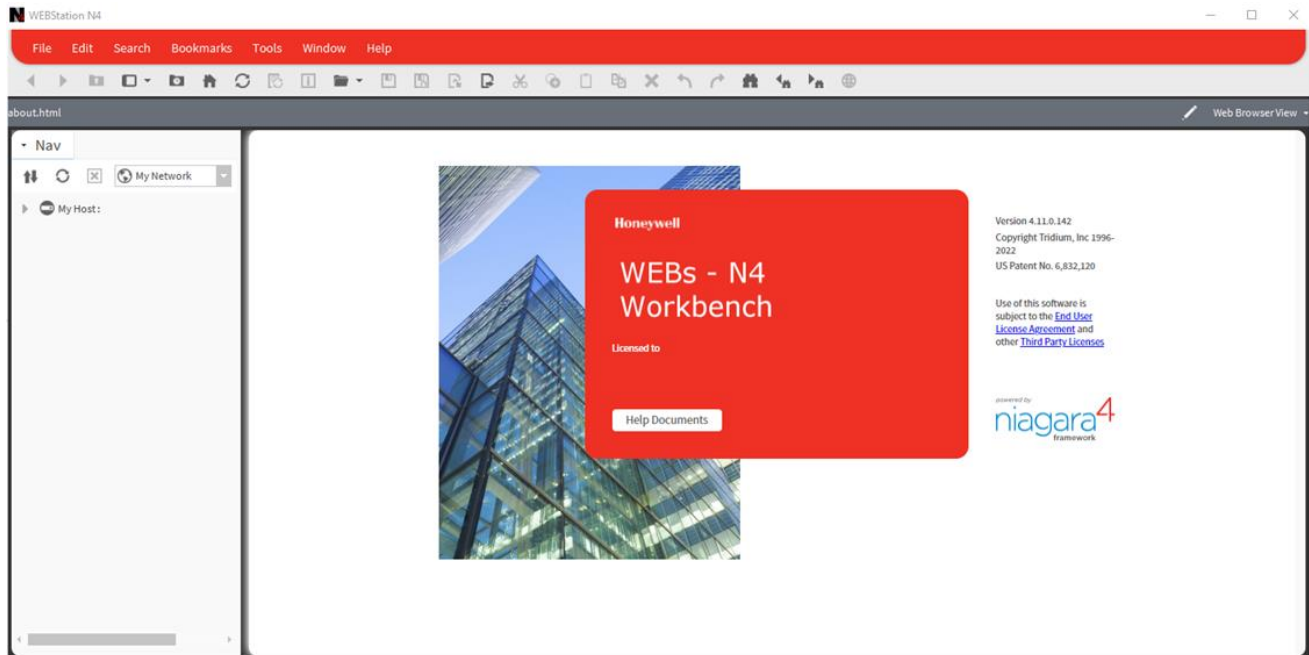


Once the installation completes. The WEBStation-N4 launches the workbench, and the machine installs the license automatically.

11. Click **Continue** to run the WEBStation-N4 workbench.



This action opens the WEBS-N4 Workbench.



**Honeywell Building Technologies**

715 Peachtree St NE  
 Atlanta, Georgia 30308  
[customer.honeywell.com](http://customer.honeywell.com)  
[buildings.honeywell.com](http://buildings.honeywell.com)

® U.S. Registered Trademark  
 © 2022 Honeywell International Inc.  
 31-00551-01 | Rev 05-2022

