



Velociti® Series

AMM-4SF Interface Module

12 Clintonville Road
Northford, CT 06472-1653
Phone: 203.484.7161; Fax: 203.484.7118
www.gamewell-fci.com

SPECIFICATIONS

Normal Operating Voltage:	15 to 32 VDC
Maximum Current Draw:	5.1 mA (LED on)
Average Operating Current:	255 µA (LED flashing - in Velociti mode); 230 µA (LED flashing - in CLIP mode)
EOL Resistance:	3.9K Ohms
Maximum IDC Wiring Resistance:	25 Ohms
IDC Supply Voltage (between Terminals T10 and T11)	
Regulated DC Voltage:	24 VDC power limited
Ripple Voltage:	0.1 Volts RMS maximum
Alarm Current:	90 mA per module
Standby Current:	13 mA Maximum @24 VDC
Temperature Range:	32°F to 120°F (0°C to 49°C)
Humidity:	10% to 93% Non-condensing
Dimensions:	4.5" H × 4 W × 1.25" D (Mounts to a 4" square by 2.125" deep box.)
Accessories:	SMB500 Electrical Box

BEFORE INSTALLING

This information is included as a quick reference installation guide. Refer to the control panel installation manual for detailed system information. If the modules will be installed in an existing operational system, inform the operator and local authority that the system will be temporarily out of service. Disconnect power to the control panel before installing the modules.

NOTICE: This manual should be left with the owner/user of this equipment.

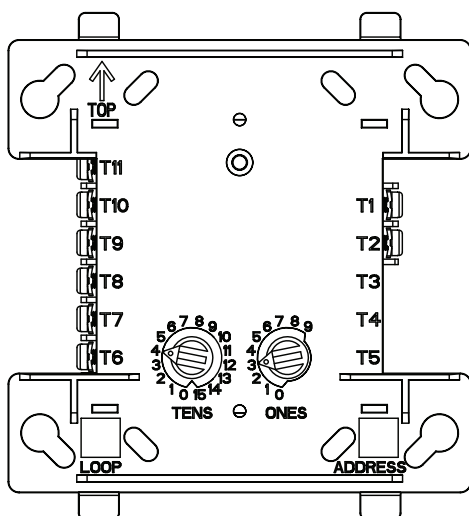
GENERAL DESCRIPTION

The AMM-4SF Interface Module is intended for use in intelligent, two-wire systems, where the individual address of each module is selected using the built-in rotary switches. This module allows intelligent panels to interface and monitor two-wire conventional smoke detectors. It transmits the status (normal, open, or alarm) of one full zone of conventional detectors back to the control panel. All two-wire detectors being monitored must be UL compatible with this module. AMM-4SF is capable of handling more than one detector in alarm condition.

COMPATIBILITY REQUIREMENTS

To ensure proper operation, this module shall be connected to a compatible Gamewell-FCI system control panel only (list available from Gamewell-FCI). Please refer to Gamewell-FCI's document #9000-0427 for full list of compatible devices.

FIGURE 1. CONTROLS AND INDICATORS



C1059-00

MOUNTING

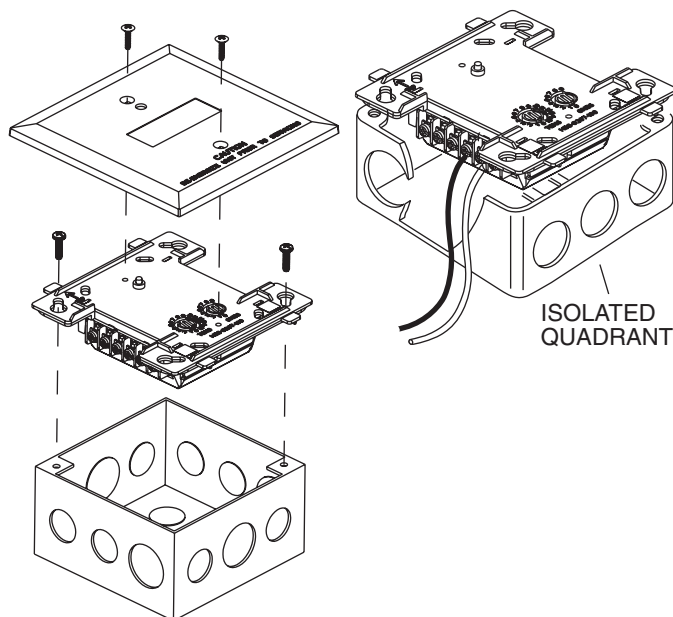
The AMM-4SF mounts directly to 4-inch square electrical boxes. (See Figure 2.) The box must have a minimum depth of 2.125 inches. Surface mounted electrical boxes (SMB500) are available from Gamewell-FCI.

WIRING

NOTE: All wiring must conform to applicable local codes, ordinances, and regulations. This module is intended for power-limited wiring only.

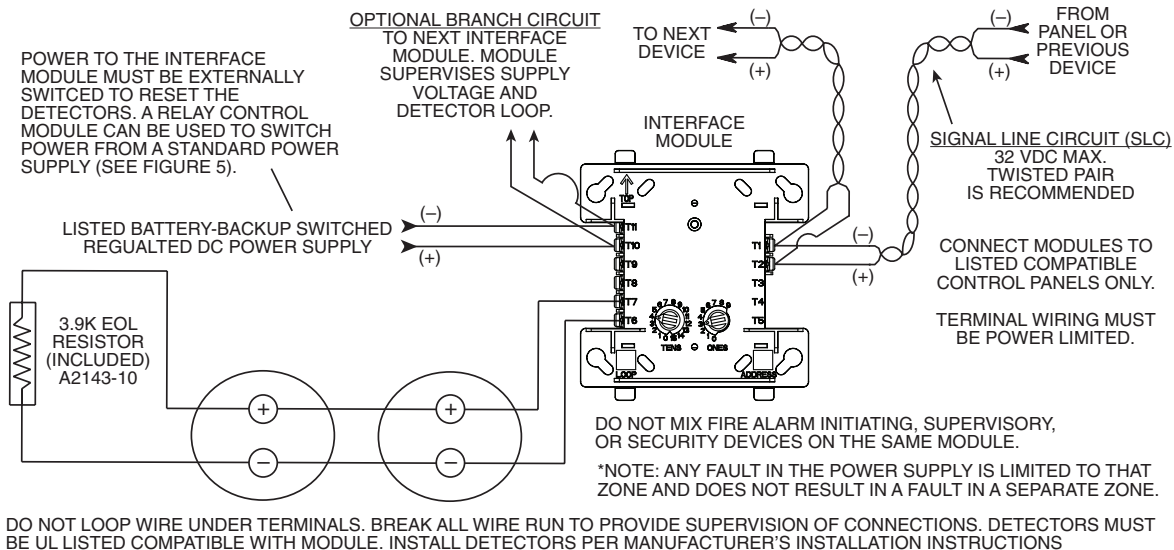
1. Install module wiring in accordance with the job drawings and appropriate wiring diagrams.
2. Set the address on the module per job drawings.
3. Secure module to electrical box supplied by installer. (See Figure 2.)

FIGURE 2. MODULE MOUNTING



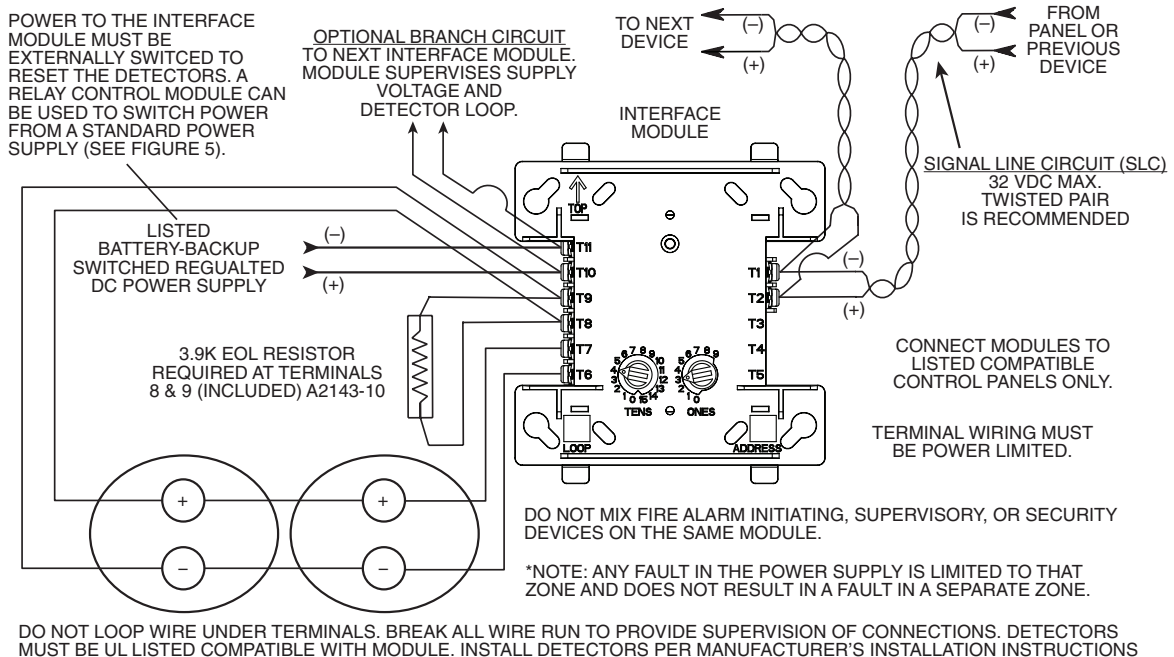
C1066-00

FIGURE 3. INTERFACE TWO-WIRE CONVENTIONAL DETECTORS, NFPA CLASS B



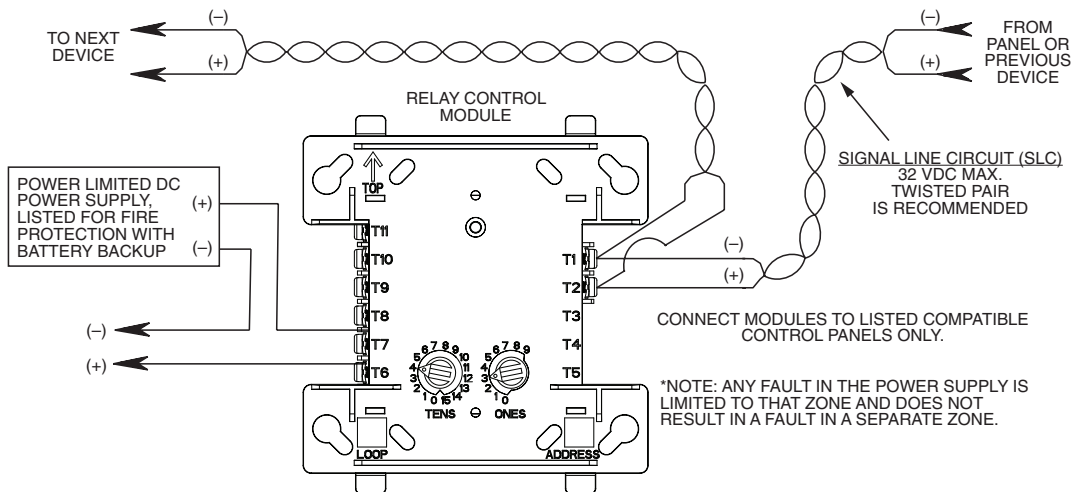
C1061-00

FIGURE 4. INTERFACE TWO-WIRE CONVENTIONAL DETECTORS, NFPA CLASS A



C1062-00

FIGURE 5. RELAY CONTROL MODULE USED TO DISCONNECT A POWER SUPPLY



C0945-00