

ECS-50WBU Installation Instructions

The ECS-50WBU provides backup capability when operating the ECS-DUAL50W in the 100 watt with backup mode for both single and dual channel setups.

Compatibility

The ECS-50WBU is compatible with the following Honeywell Farenhyt Series FACP's:

- IFP-2000ECS • IFP-2100ECS
- IFP-1000ECS • IFP-300ECS
- IFP-100ECS

Mounting and Wiring

The ECS-50WBU mounts above the ECS-DUAL50W board on the standoffs provided.

1. Remove AC power from the ECS-DUAL50W.
2. Disconnect the backup batteries from the ECS-DUAL50W.
3. Connect one end of the supplied wiring harness (P/N 50116775-001) from the connector labeled "Backup Amplifier" on the ECS-DUAL50W to the connector on the ECS-50WBU as shown in : Wiring Harness Connection.
4. Using the 4 supplied screws, mount the ECS-50WBU to the standoffs as shown in : Wiring Harness Connection.
5. Restore AC Power.
6. Reconnect backup batteries.

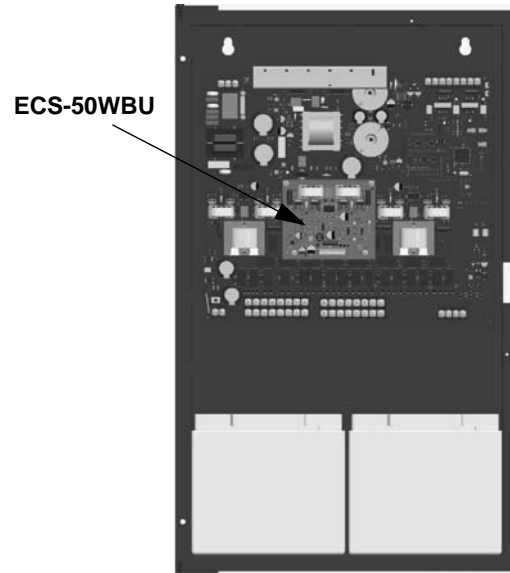


Figure 1: Mounting Location for the ECS-50WBU

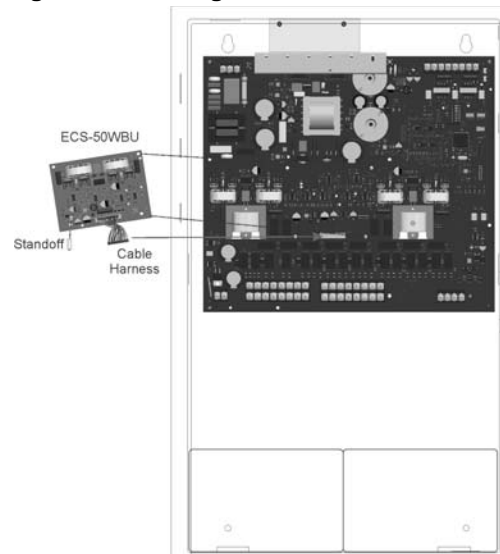


Figure 2: Wiring Harness Connection

Honeywell
12 Clintonville Road
Northford, CT 06472-1610 USA
203-484-7161
Fax: 203-484-7118
www.farenhyt.com

© 2017 Honeywell International Inc.

Farenhyt™ is a trademark, and Honeywell® is a registered trademark of Honeywell International, Inc.