



VOICE LOAD

Audio Programming Utility

User Guide

CONTENTS

1	1● An Introduction
2	2● Installing
6	3● Writing File To Panel (Download)
11	4● Read File From Panel (Upload)

1 An Introduction

Voice Load Audio Programming Utility is an application used to upload (read) or download (write) proprietary SKE1 audio formatted message file(s) to/from Fire-Lite Alarms by Honeywell ® ECC-50/100 Mass Notification System.

The SKE1 audio file can't be played by any audio file player; it is only to be used on the ECC-50/100 Mass Notification System.

This document assumes that the user is familiar with the ECC-50/100 Mass Notification System operations.

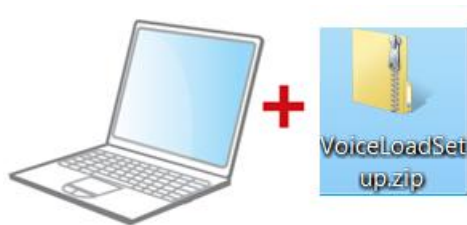
This document assumes that the user is familiar with PC computers, Microsoft ® Windows 7 Operating System, and the file zipping utility built into Microsoft ® Windows 7.

2 Installing

To begin using the Voice Load Audio Programming Utility, you'll first need to install the application on to the PC.

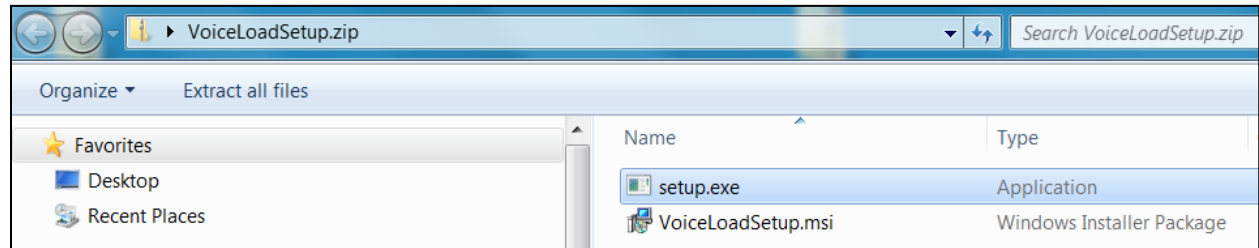
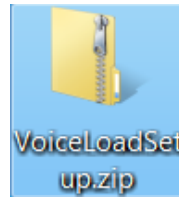
Items Required:

- Microsoft ® Windows 7 installed on a PC
- VoiceLoadSetup.zip
- USB A to B Printer Cable

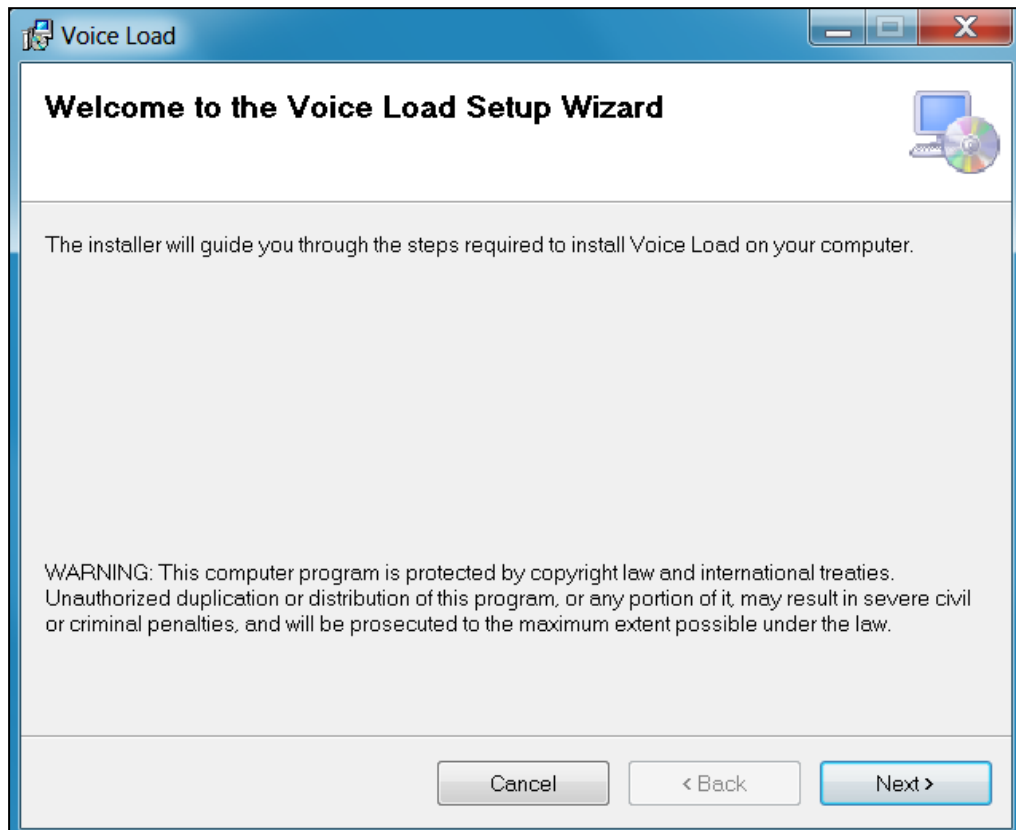


Installing The Application

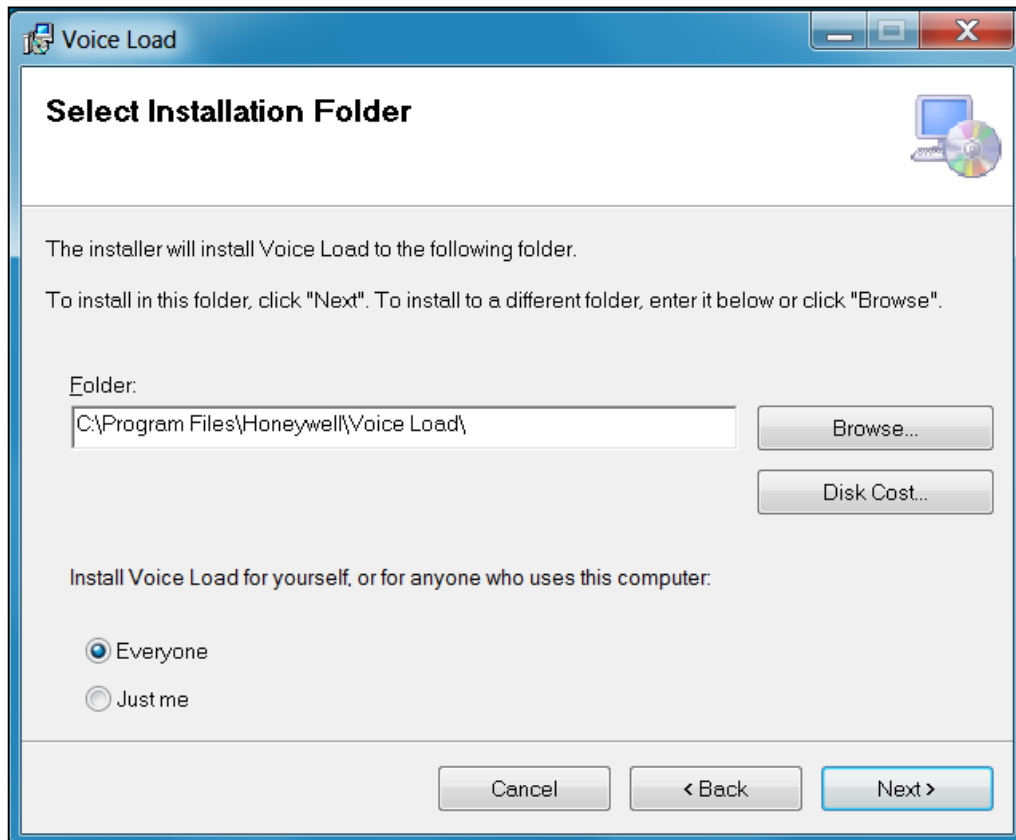
1. Double-click **"VoiceLoadSetup.zip"**.



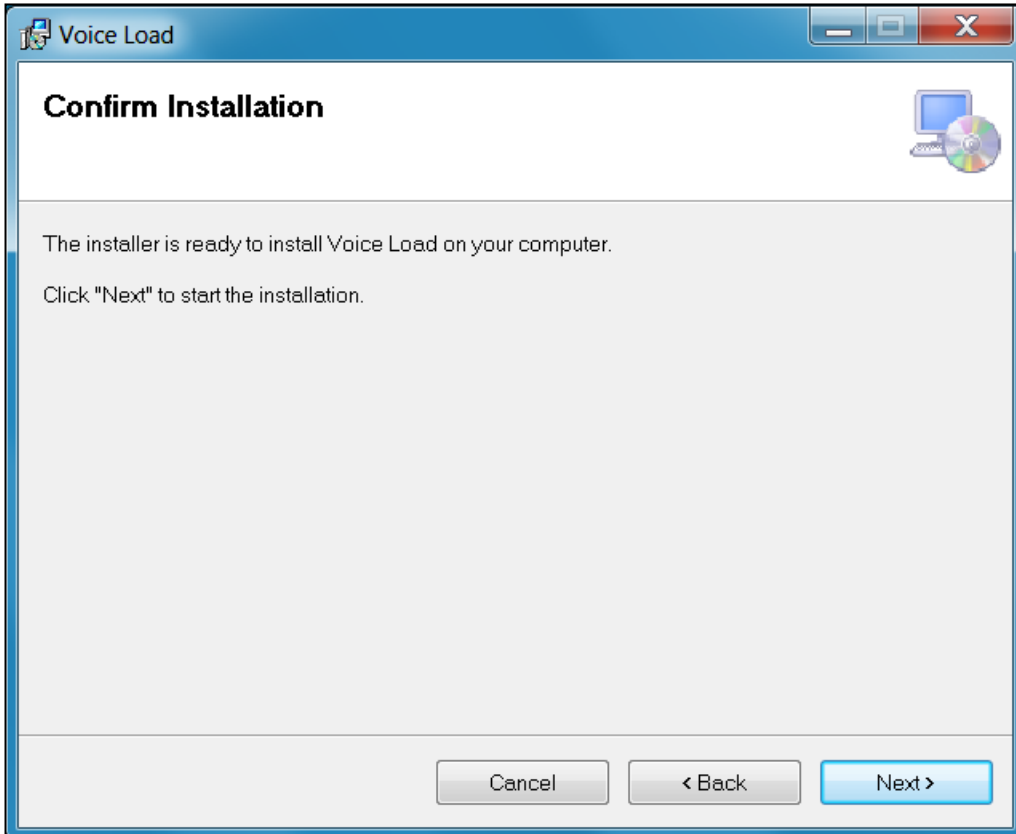
2. Double-click **"setup.exe"**.



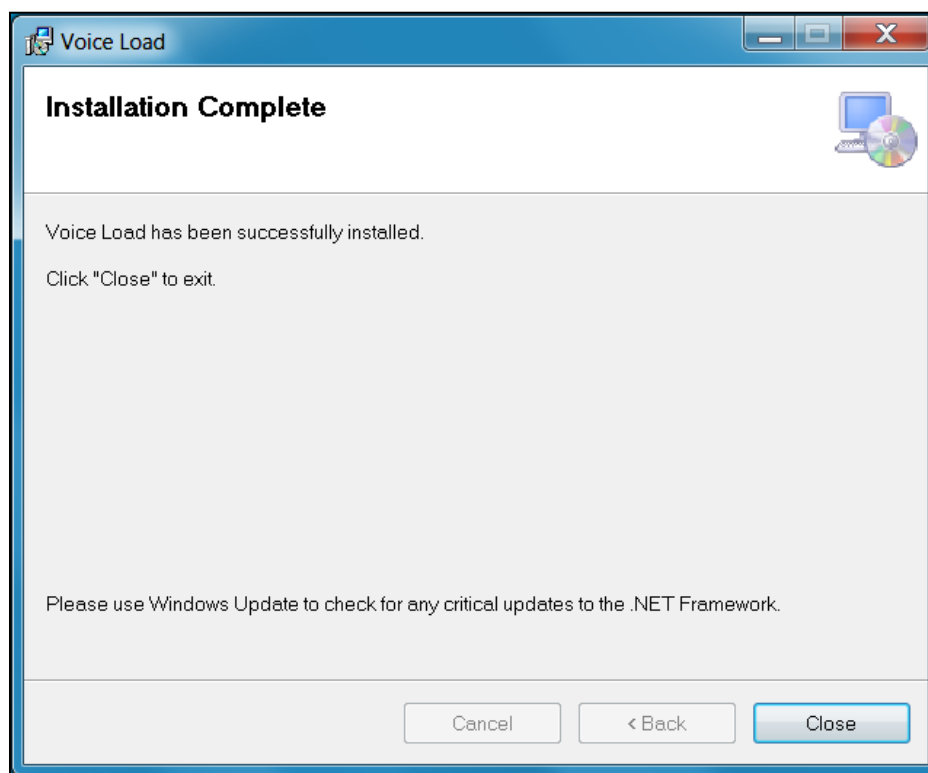
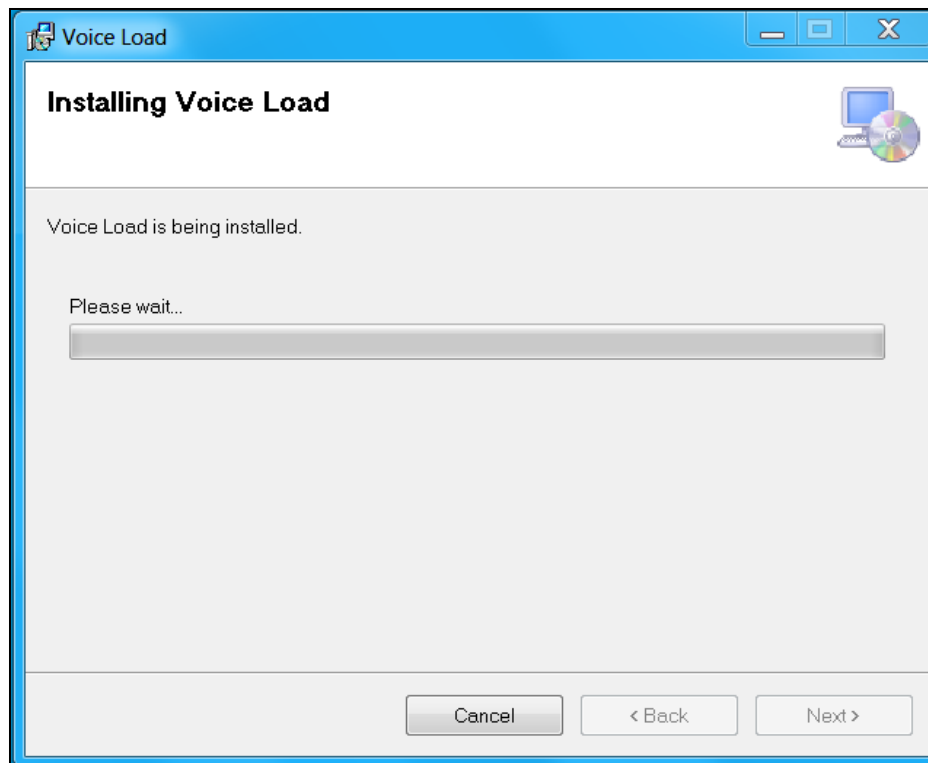
3. Click the **Next** button.



4. Click the **Next** button.



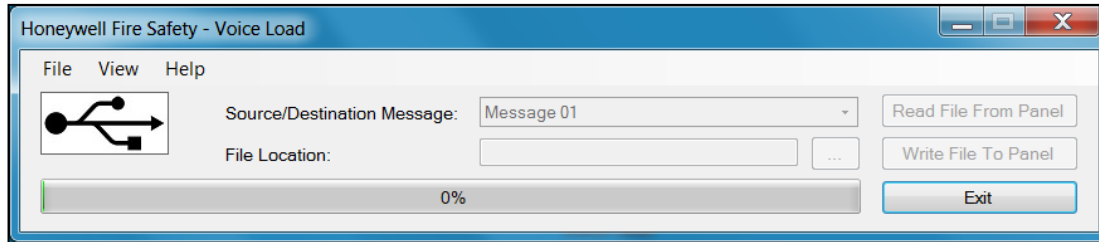
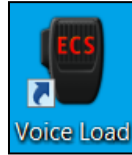
5. Click the **Next** button.



6. Click the **Close** button.

3 Writing File To Panel (Download)

1. Double-click **"Voice Load"** icon.

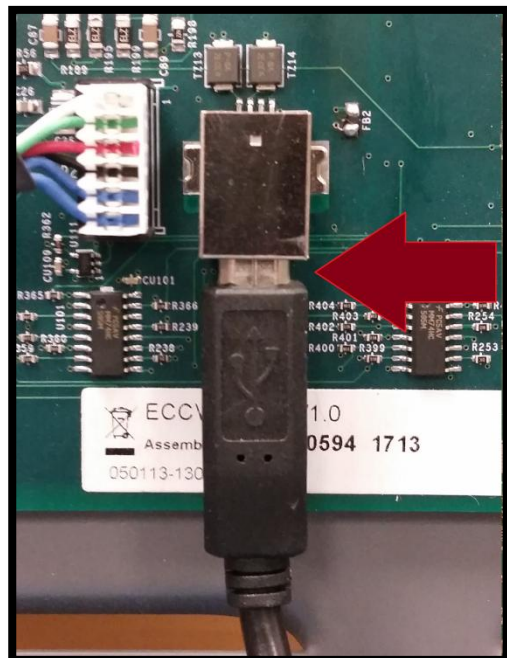


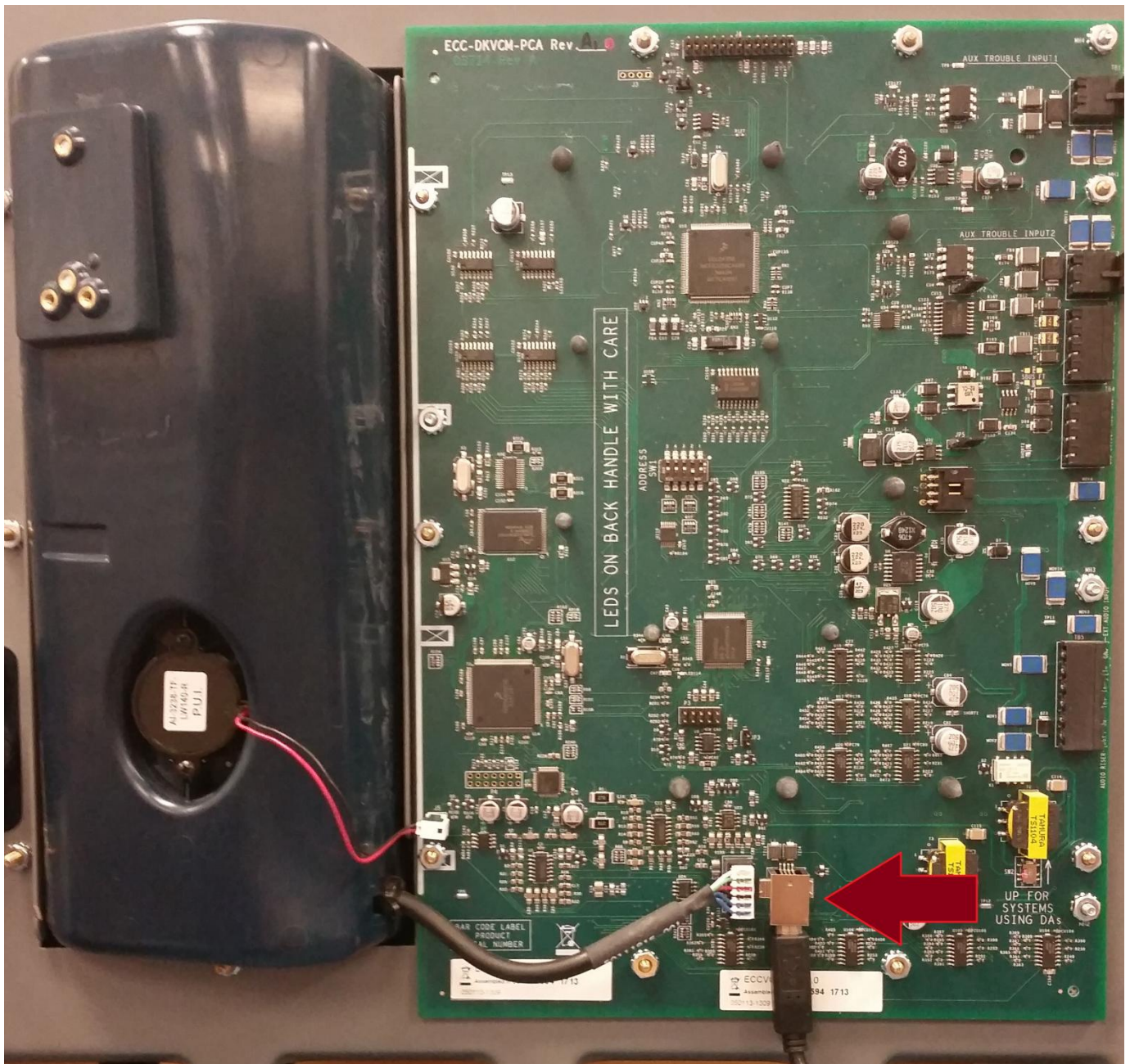
Note: The USB icon is black which indicates the PC isn't connected to the Mass Notification's DKVCM at this time.

2. Plug the USB connector (MALE side A) into the computer's USB port (*Refer to page 2*).



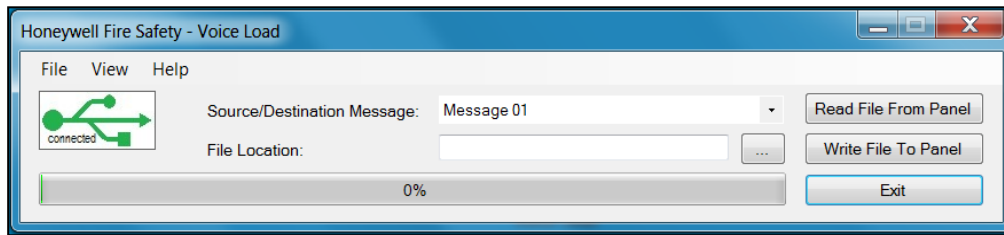
3. Plug the other end of the USB connector (MALE side B) into the DKVCM (J1) connector on the DKVCM display board.



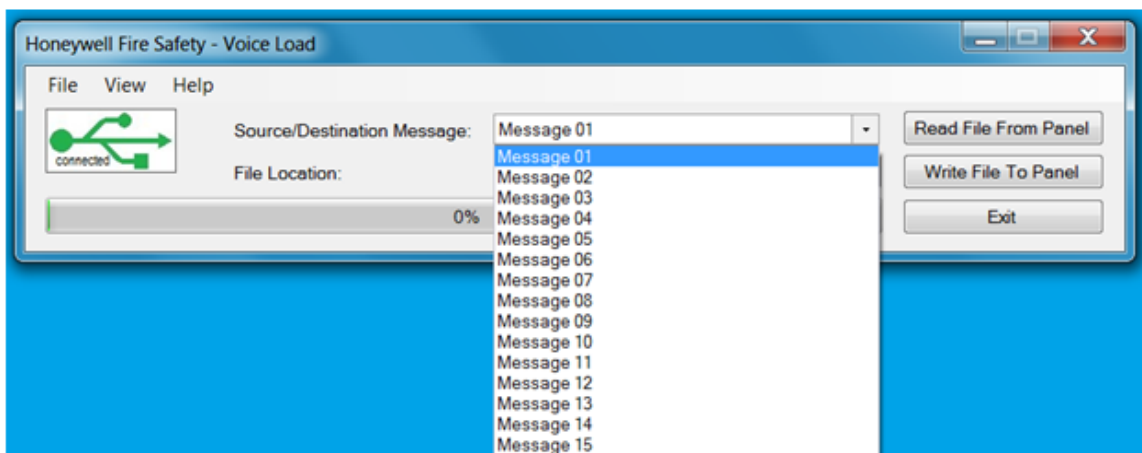
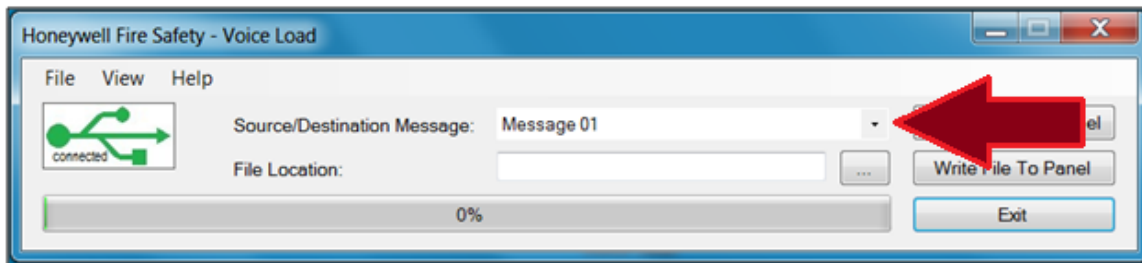


DKVCN- Connecting Male USB-B connector into J1.

When the connection between the PC and the DKVCM is successfully made, the USB icon will now be displayed in green and indicate “connected”.



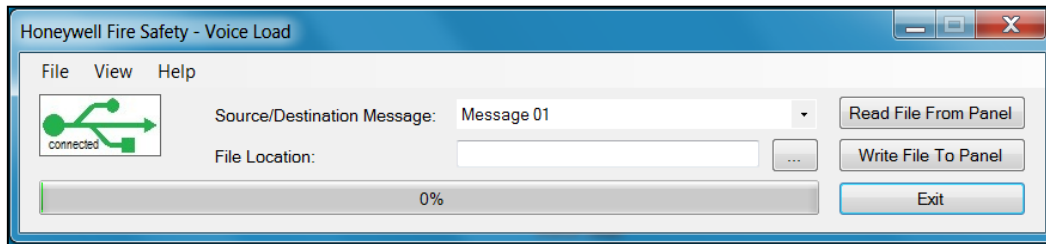
4. Click on the down arrow, and then select a message slot location (Message 01 – Message 14) to write (download) the SKE1 file into. “Message 15” slot isn’t used.



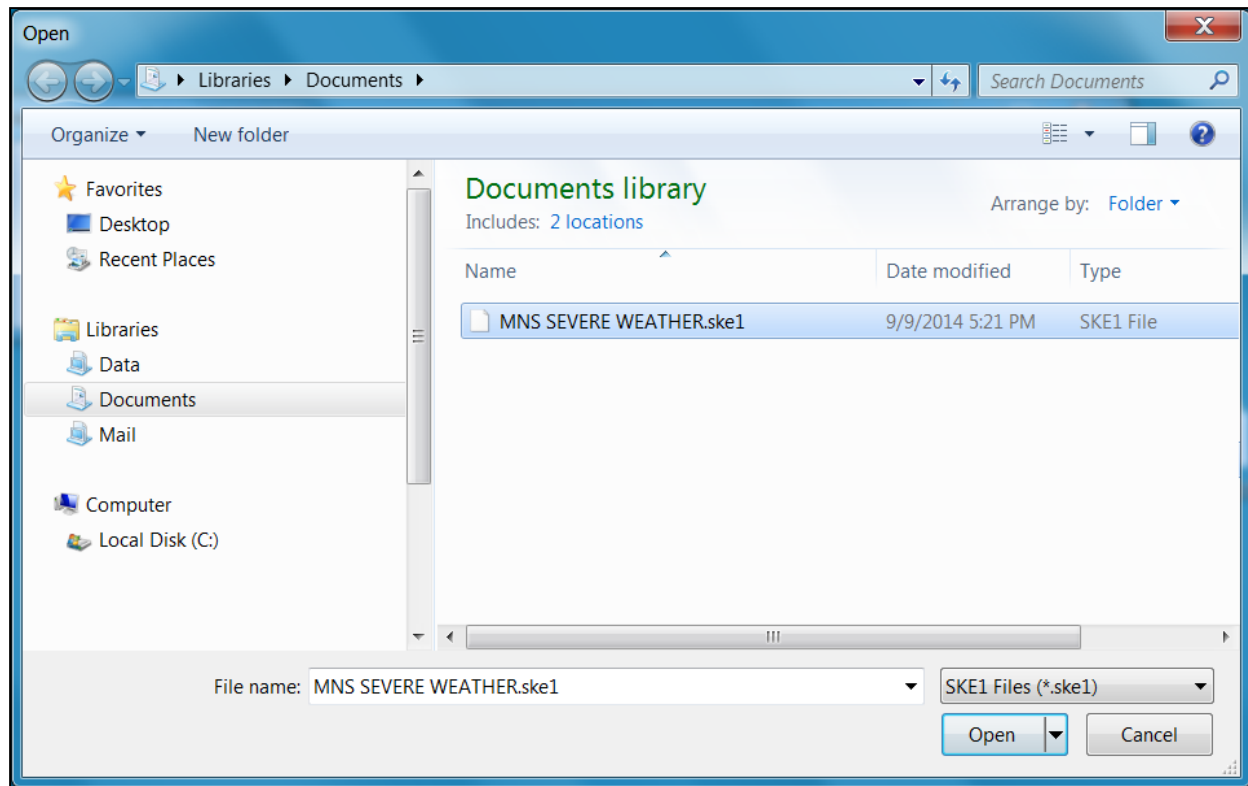
Note:

Message 01 = Message Button 01 on the DKVCM
Message 02 = Message Button 02 on the DKVCM
Message 03 = Message Button 03 on the DKVCM
Message 04 = Message Button 04 on the DKVCM
Message 05 = Message Button 05 on the DKVCM
Message 06 = Message Button 06 on the DKVCM
Message 07 = Message Button 07 on the DKVCM
Message 08 = Message Button 08 on the DKVCM
Message 09 = Message Button 09 on the DKVCM
Message 10 = Message Button 10 on the DKVCM
Message 11 = Message Button 11 on the DKVCM
Message 12 = Message Button 12 on the DKVCM
Message 13 = Message Button 13 on the DKVCM
Message 14 = Message Button 14 on the DKVCM

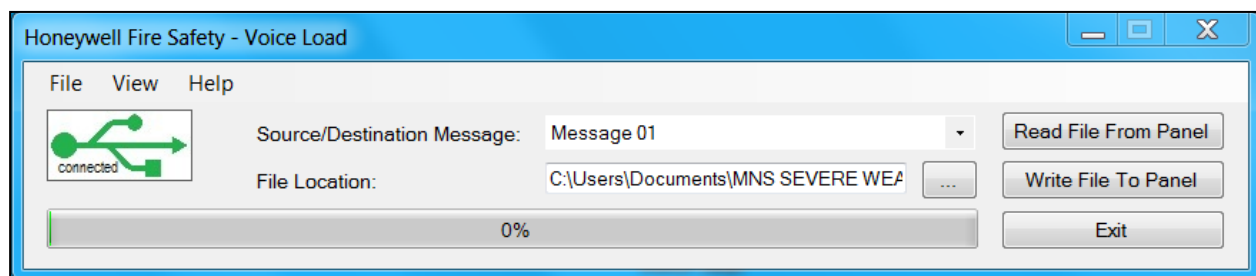
5. Click **"Write File To Panel"** button.



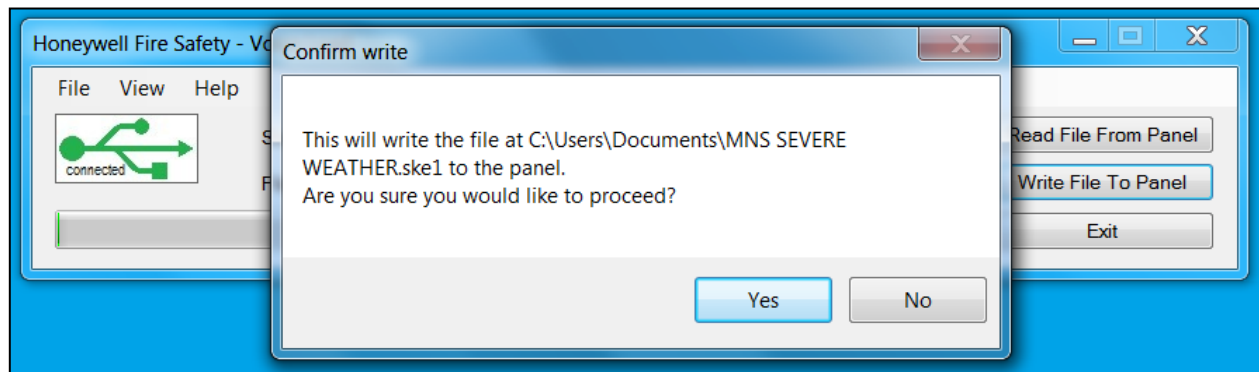
6. Navigate to the directory where the "SKE1" files are saved, and then select a file accordingly.



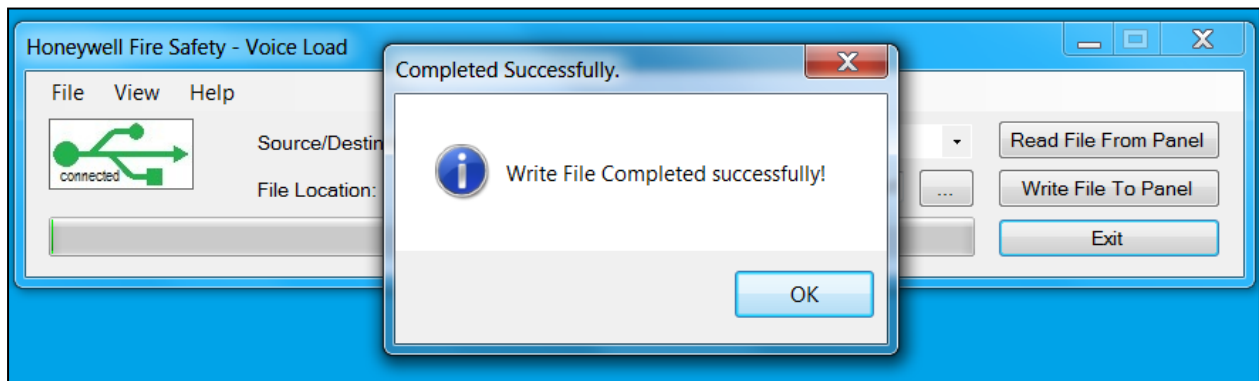
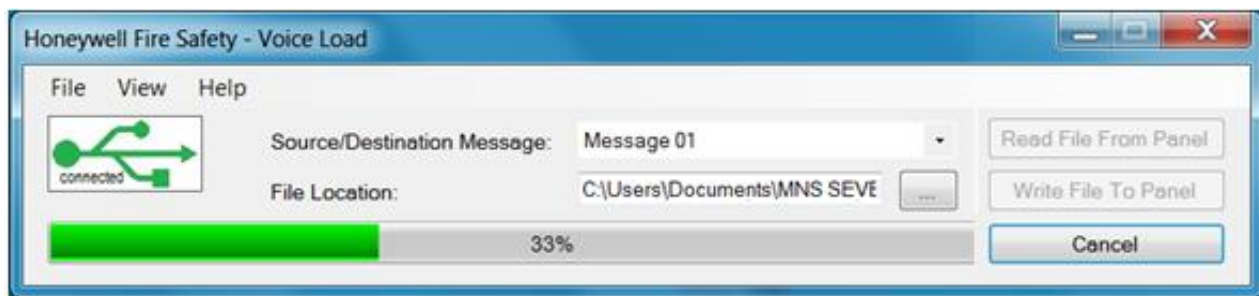
7. Click the **"Open"** button.



8. Click the **"Write File To Panel"** button.



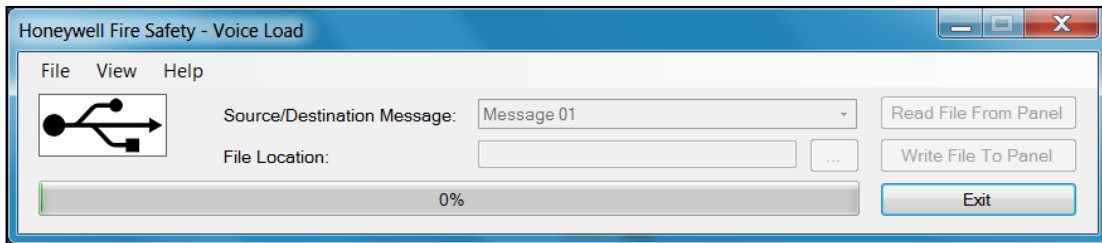
9. Click the **"Yes"** button.



10. Click the **"OK"** button.

4 Read File From Panel (Upload)

1. Double-click **"Voice Load"** icon.

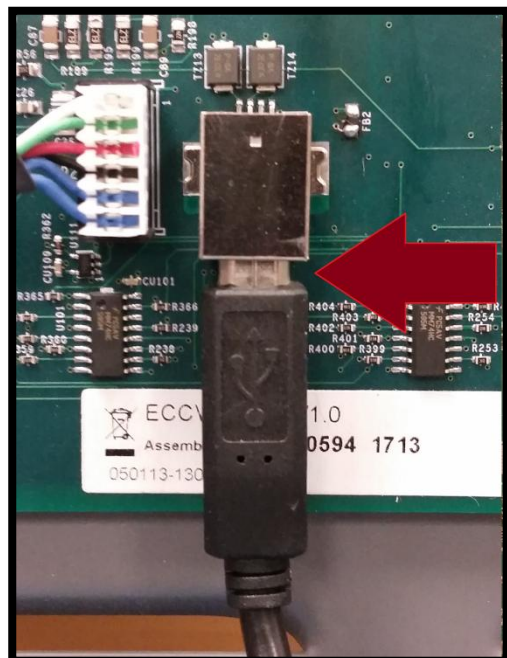


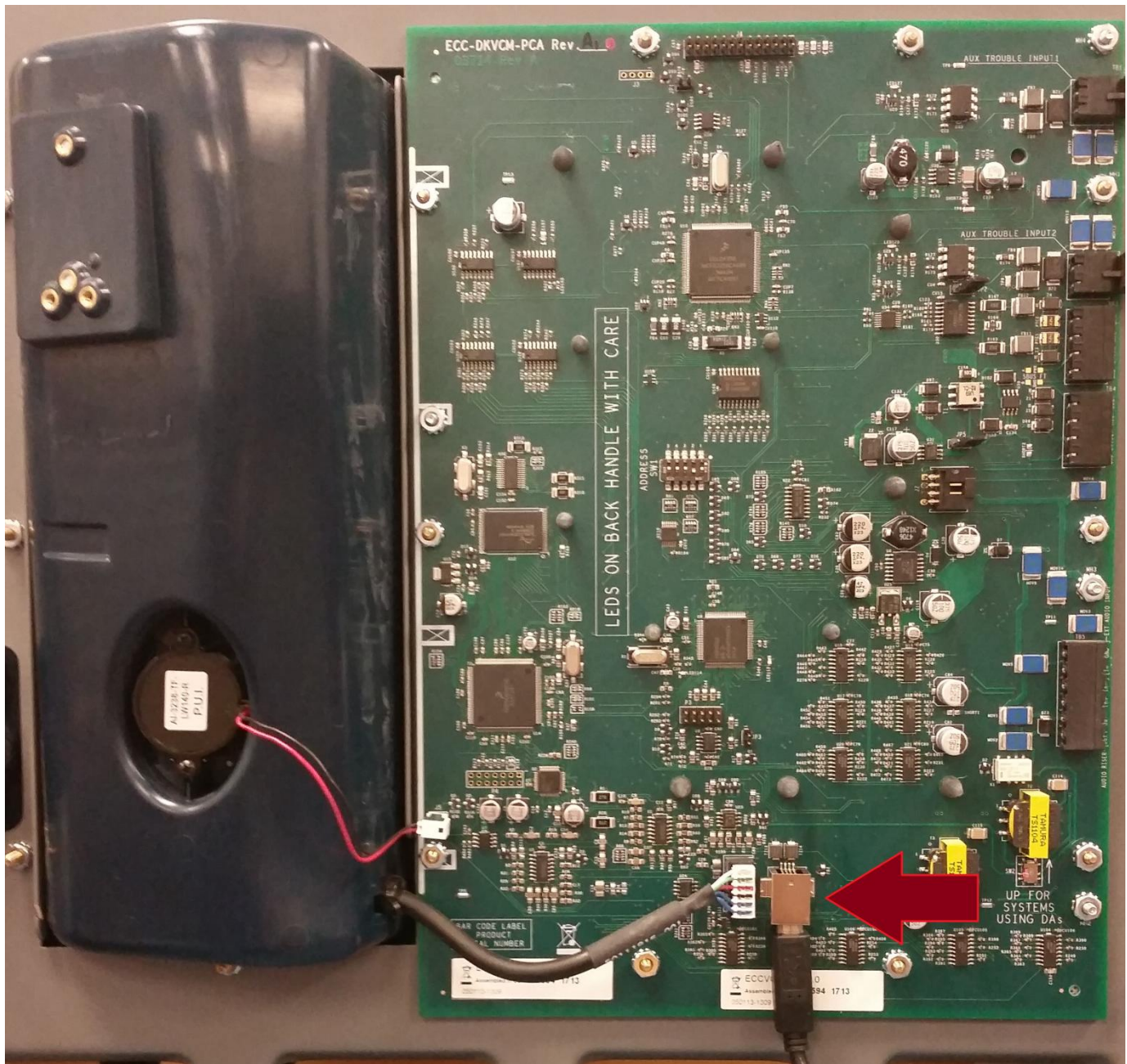
Note: The USB icon is black which indicates the PC isn't connected to the Mass Notification's DKVCM at this time.

2. Plug the USB connector (MALE side A) into the computer's USB port (*Refer to page 2*).



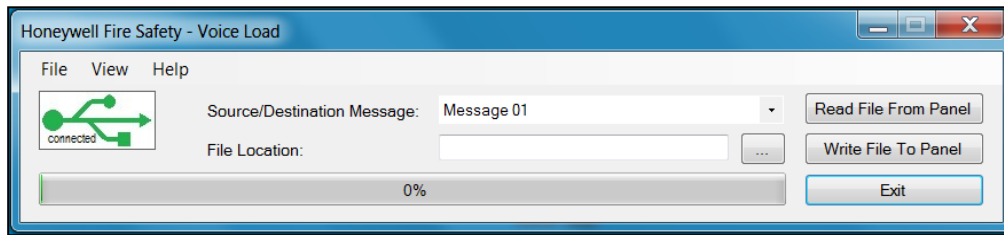
3. Plug the other end of the USB connector (MALE side B) into the DKVCM (J1) connector on the DKVCM display board.



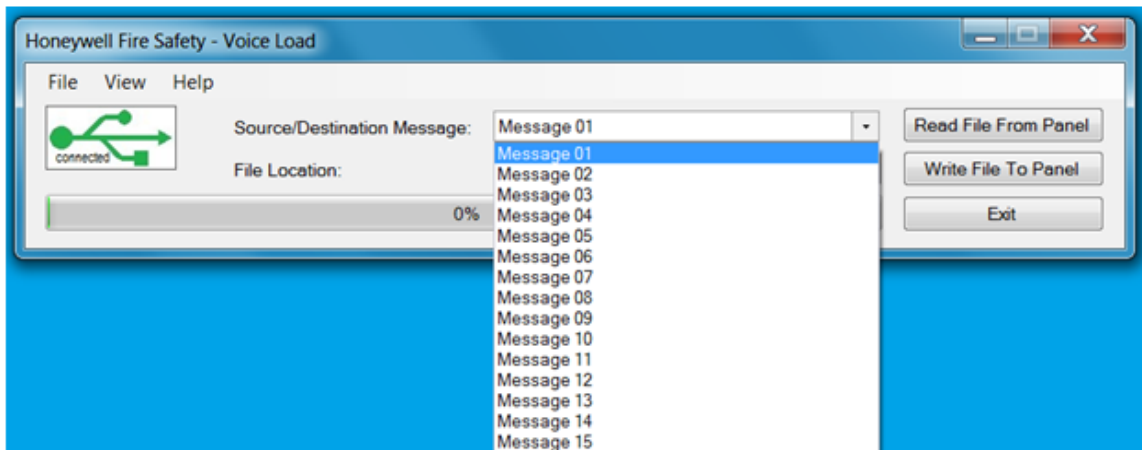
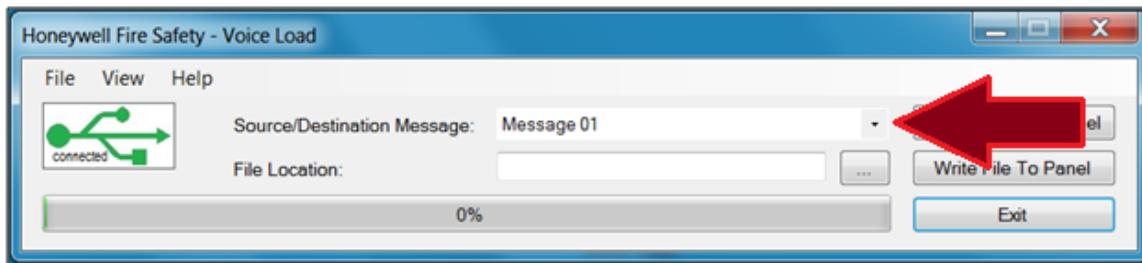


DKVCN- Connecting Male USB-B connector into J1.

When the connection between the PC and the DKVCM is successfully made, the USB icon will now be displayed in green and indicate “connected”.



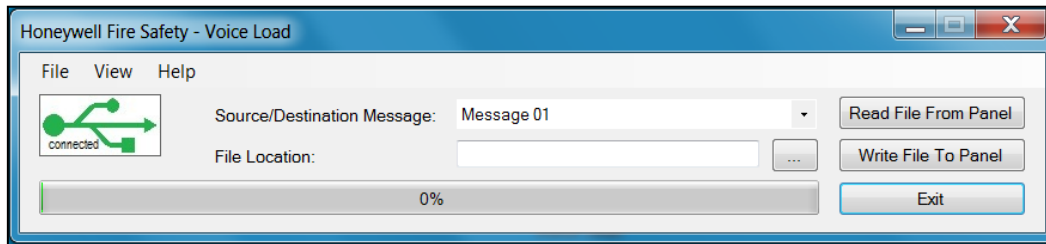
4. Click on the down arrow, and then select a message slot location (Message 01 – Message 14) to read (upload) the SKE1 file from. “Message 15” slot isn’t used.



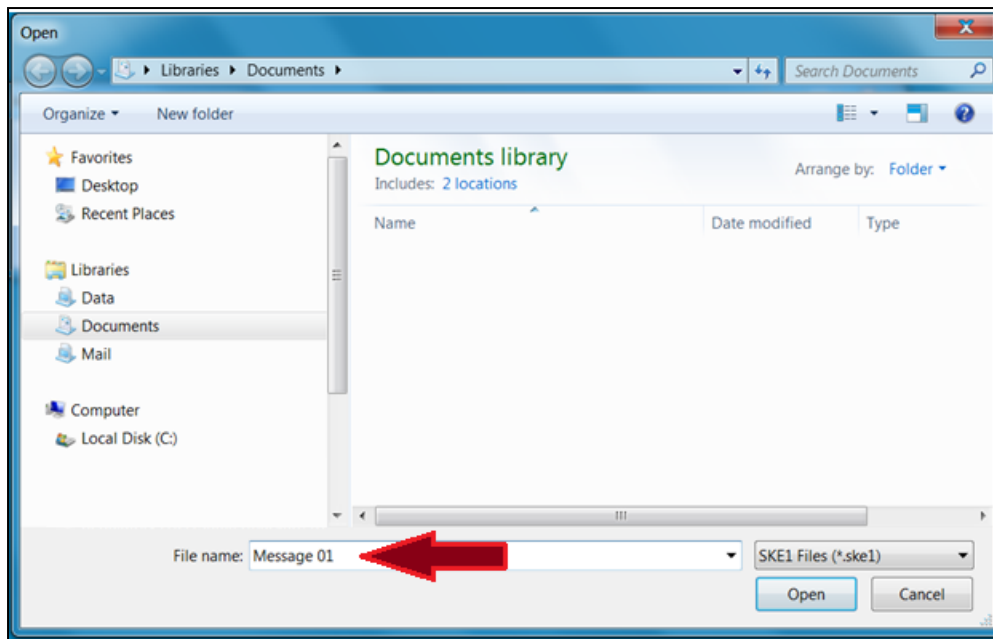
Note:

Message 01 = Message Button 01 on the DKVCM
Message 02 = Message Button 02 on the DKVCM
Message 03 = Message Button 03 on the DKVCM
Message 04 = Message Button 04 on the DKVCM
Message 05 = Message Button 05 on the DKVCM
Message 06 = Message Button 06 on the DKVCM
Message 07 = Message Button 07 on the DKVCM
Message 08 = Message Button 08 on the DKVCM
Message 09 = Message Button 09 on the DKVCM
Message 10 = Message Button 10 on the DKVCM
Message 11 = Message Button 11 on the DKVCM
Message 12 = Message Button 12 on the DKVCM
Message 13 = Message Button 13 on the DKVCM
Message 14 = Message Button 14 on the DKVCM

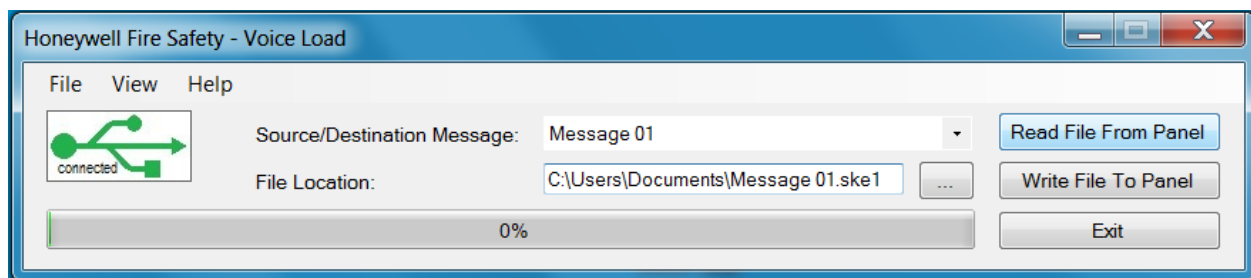
5. Click **"Read File From Panel"** button.



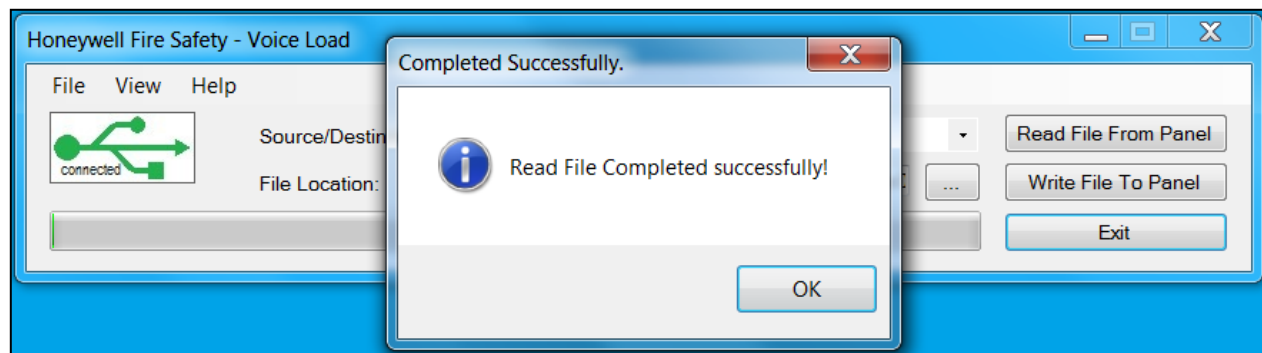
6. Navigate to the directory where the "SKE1" file is going to be saved, and then give the file a name. (Example: Message 01)



7. Click the **"Open"** button.



8. Click the **"Read File From Panel"** button.



9. Click the **"OK"** button.