



HN300802xxx/HN301602xxx

Network Video Recorder

Quick Networking Guide

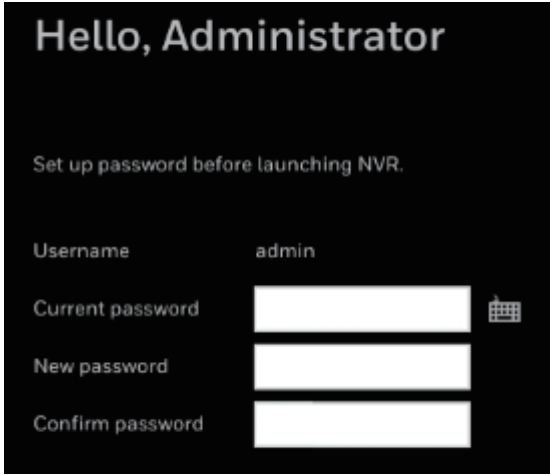
This guide shows how to make your NVR system to connect with the Internet and Smartphone or Tablet computer.

Before you begin, ensure that you have

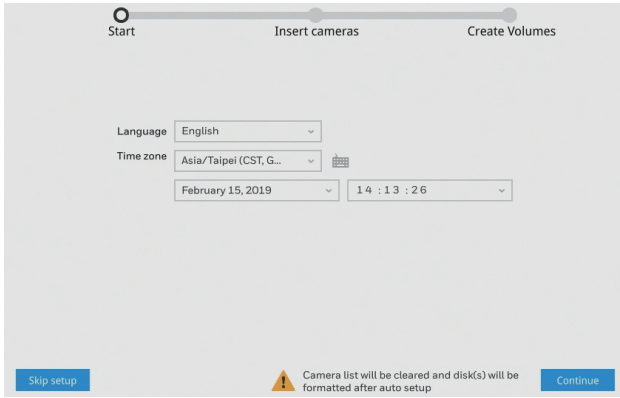
- A router and high-speed Internet access.
- The NVR connected to a router or switch on your network, using an Ethernet cable.

Local Network Setup

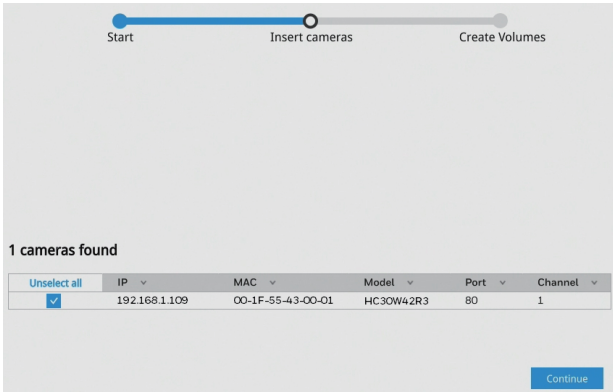
1. When the NVR has booted up, set password before launching.



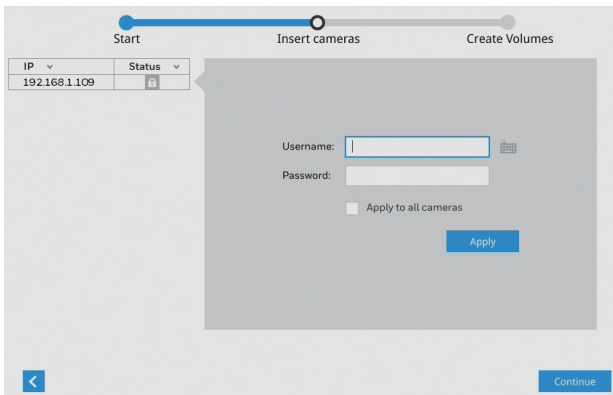
2. When the password setup is completed, click **Apply** and the following window is displayed. Select the language and time zone from the dropdown list and set date and time.



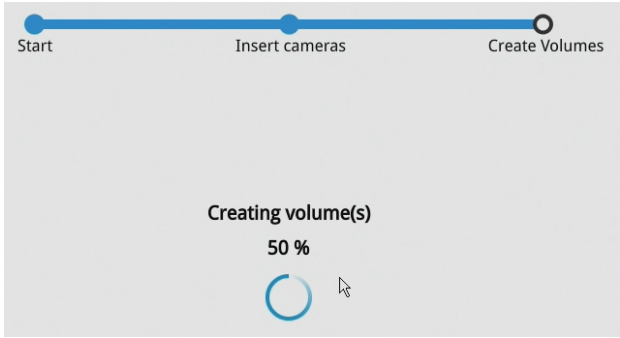
3. Click **Continue** and cameras that been searched within the LAN will be listed:



4. Click **Continue** and the following windows is displayed:



5. Enter the username and password of the camera. Click **Continue** and the following window is displayed.

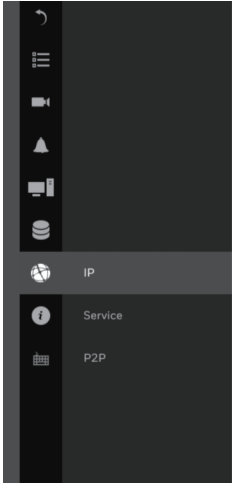


When the initialization is completed, the liveview screen is displayed.



6.   

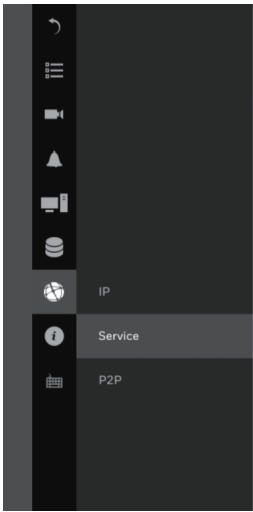
Configure the network settings as either DHCP or manual .



Note: IP address of the device is assigned automatically by DHCP server. If the DHCP server is not available, the device can be assigned APIPA from 169.254.0.0 to 169.254.255.255 according to the MAC address of the device. Note that the first APIPA 169.254.0.0 and the last APIPA 169.254.255.255. are unavailable.

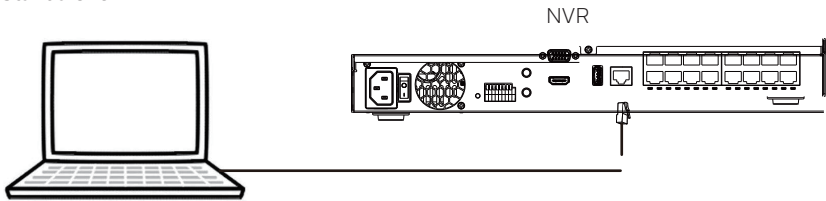
7.   

Configure the service port.



Web Initial Access

Standalone

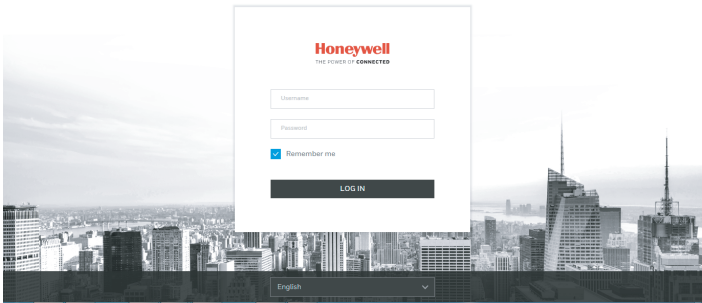


Directly connect the NVR to a computer, enter the default IP address 192.168.1.108 (refer to the IP address table above) in the address field and click search. The default login username and password is “**admin**”/“**1234**”.

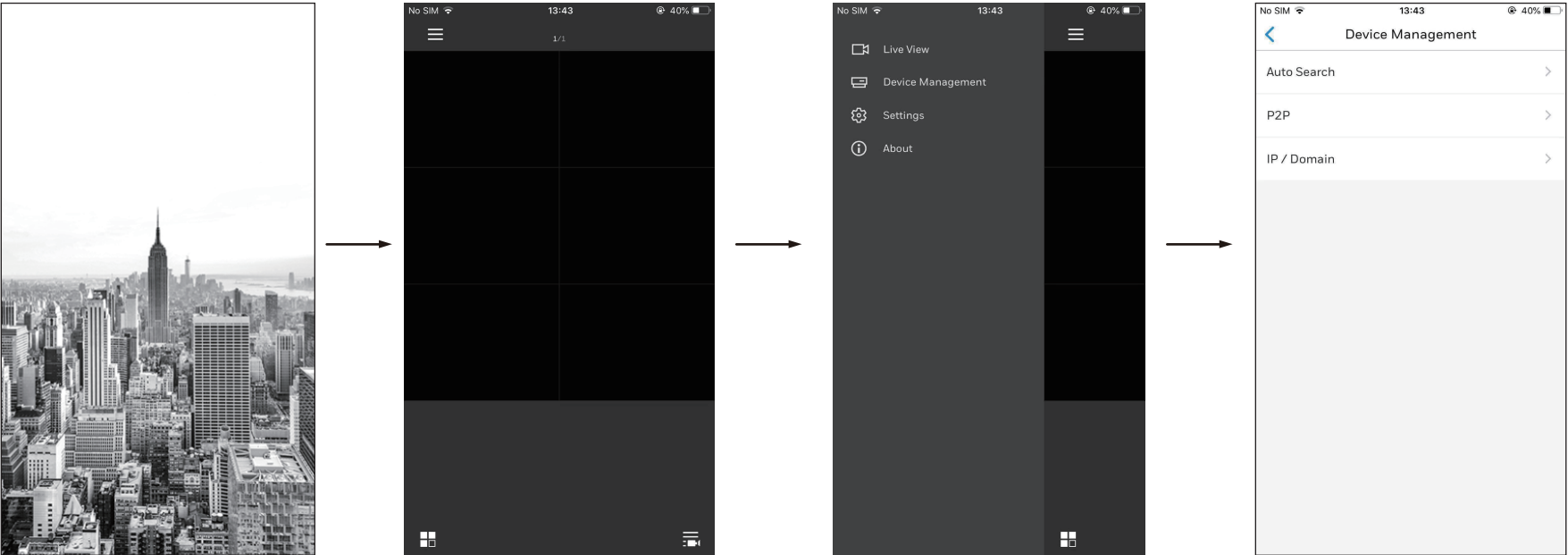
WAN/LAN

1. Enter the IP address (assigned automatically by DHCP server) of NVR in the address field of a web browser and click search.
2. Enter the username and password which have been setup on NVR to log in.

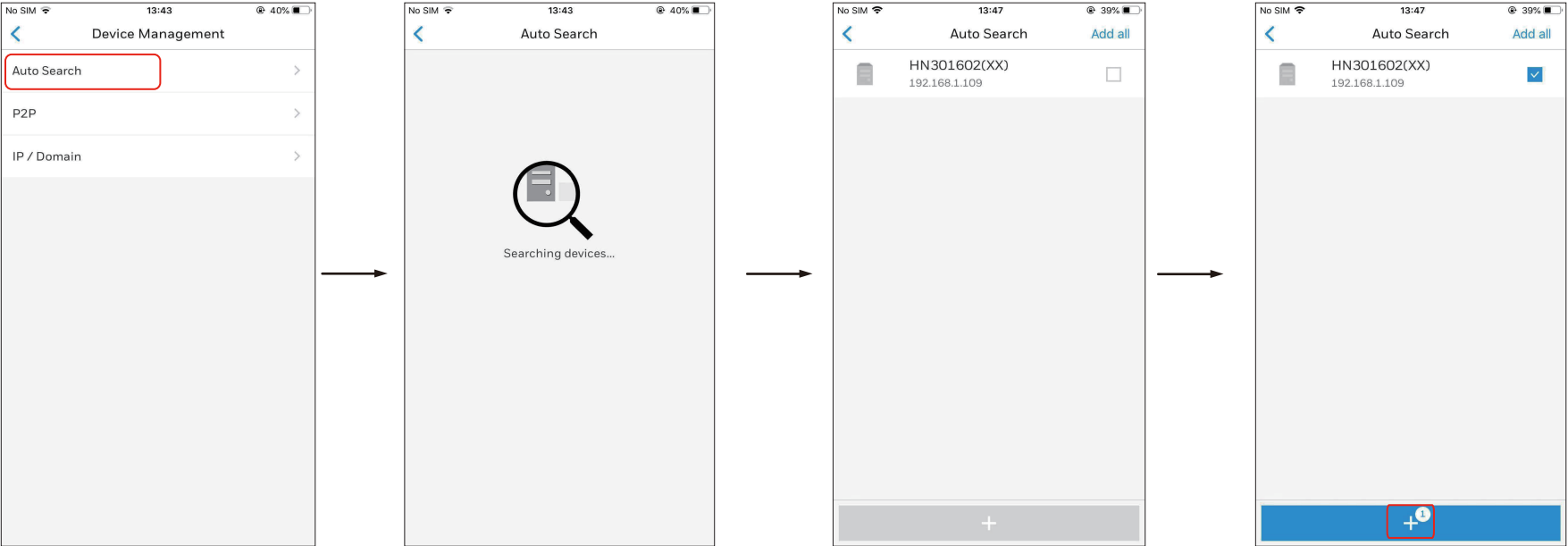
Note: WAN is for remote control NVR; LAN is for connecting to camera directly.



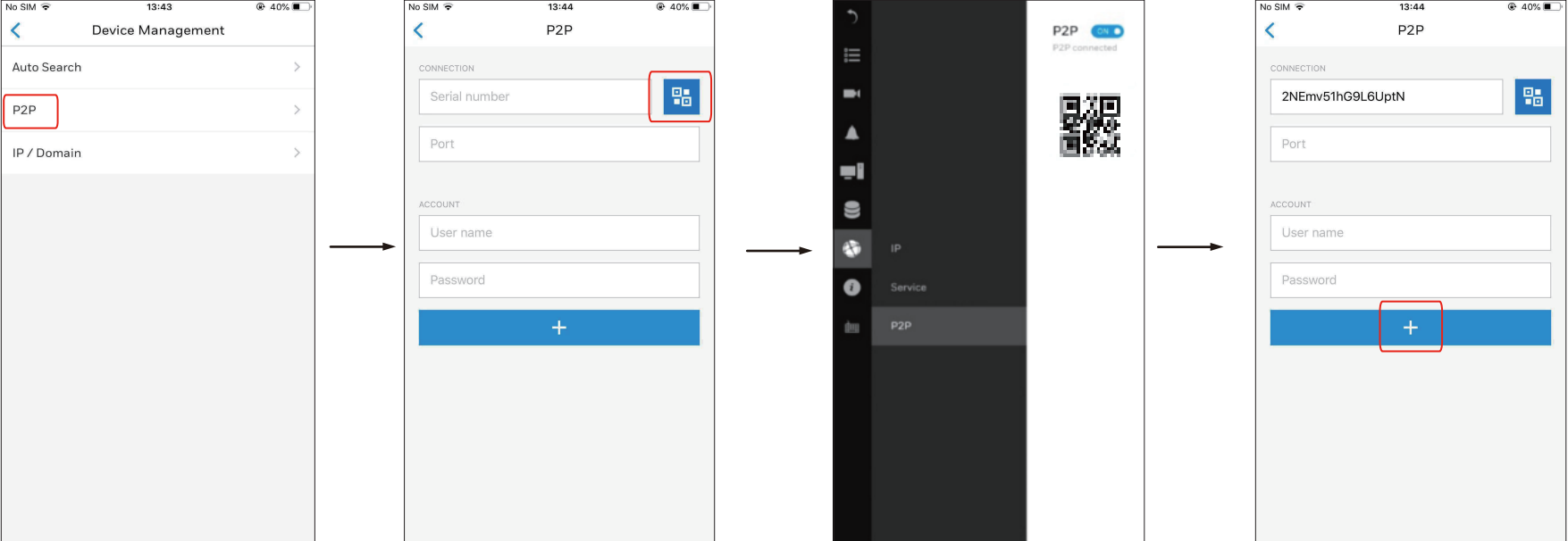
Mobile App/Tablet Computer Setup



A

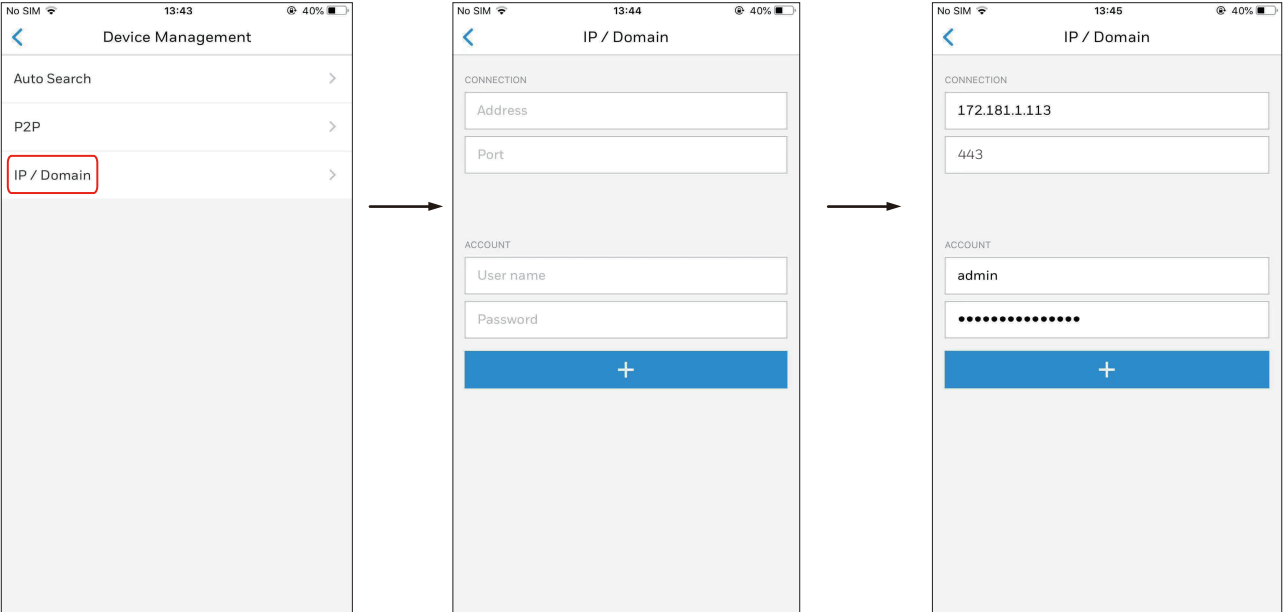


B



QR on NVR: [gear icon] → [globe icon] → P2P

C



Honeywell

www.security.honeywell.com/
+1 800 323 4576 (North America)
+971 44541704 (Middle East)
+44 8448 000 235 (Europe)

Document 800-25990 – Rev B – 12/2019

© 2019 Honeywell International Inc. All rights reserved. No part of this publication may be reproduced by any means without written permission from Honeywell. The information in this publication is believed to be accurate in all respects. However, Honeywell cannot assume responsibility for any consequences resulting from the use thereof. The information contained herein is subject to change without notice. Revisions or new editions to this publication may be issued to incorporate such changes. For patent information, see www.honeywell.com/patent.