

## MAXPRO® VMS R300 Viewer Edition

### Commissioning and Installation Guide





## Revisions

Issue	Date	Description
1.0	February 24, 2012	New document



# Table of Contents

**ABOUT THIS GUIDE .....3**

INTRODUCING MAXPRO® VMS R300 VIEWER EDITION .....3

SCOPE .....3

INTENDED AUDIENCE .....4

INSTALLATION AND COMMISSIONING GUIDE STRUCTURE .....4

TYPOGRAPHICAL CONVENTIONS .....4

**COMMISSIONING PLAN .....5**

OVERVIEW .....5

STEPS IN THE COMMISSIONING PROCESS .....5

    SETTING UP THE MAXPRO VMS SERVER AND CLIENT COMPUTERS ..... 5

    INSTALLING THE MAXPRO VMS SOFTWARE ..... 5

    CONFIGURING THE MAXPRO VMS SYSTEM..... 6

    VERIFYING THE CONFIGURATION ..... 6

**SETTING UP THE CLIENT AND THE SERVER COMPUTER .....9**

OVERVIEW .....9

    BEFORE YOU BEGIN..... 9

    ACTIVITIES TO PERFORM IN THIS PHASE ..... 9

HARDWARE SPECIFICATIONS .....10

CONNECTING THE MONITORS .....12

    CONFIGURING THE MONITOR DISPLAY PROPERTIES..... 12

**INSTALLING THE MAXPRO VMS SOFTWARE .....13**

OVERVIEW .....13

    BEFORE YOU BEGIN..... 13

    SYSTEM REQUIREMENTS ..... 13

INSTALLING THE MAXPRO VMS SOFTWARE .....14

HOW TO INSTALL MAXPRO VMS SOFTWARE .....15

FULL INSTALLATION .....19

CLIENT ONLY INSTALLATION .....33

    AFTER INSTALLING MAXPRO VMS R300 VIEWER EDITION ..... 37

REMOVING MAXPRO VMS R300 .....38

    BEFORE YOU BEGIN..... 38

    AFTER REMOVING MAXPRO VMS..... 42

UPGRADING TO MAXPRO VMS R300 .....44

    OVERVIEW ..... 44

    BEFORE YOU BEGIN..... 44

UPGRADING MAXPRO VMS R300 VIEWER EDITION .....45

---

BEFORE YOU BEGIN .....	45
<b>CONFIGURING MAXPRO VMS .....</b>	<b>47</b>
OVERVIEW .....	47
ACTIVITIES TO PERFORM IN THIS PHASE.....	47
BEFORE YOU BEGIN .....	47
FIREWALL SETTINGS .....	48
SERVER SIDE CONFIGURATION .....	48
RECORDERS.....	49
OTHER RECORDERS .....	49
CLIENT CONFIGURATION .....	49
ULTRAKEY .....	49
CONFIGURING MAXPRO VMS R300 VIEWER EDITION .....	51
ADDING PROFILE .....	53
ADDING SITES .....	54
ADDING USERS .....	55
ADDING PARTITIONS .....	56
ADDING AND CONFIGURING THE RECORDERS .....	57
ADDING AND CONFIGURING VIDEO INPUTS .....	58
ADDING AND CONFIGURING RELAYS .....	59
ADDING AND CONNECTING ALARM INPUTS .....	60
CREATING SEQUENCES .....	61
<b>VERIFYING THE CONFIGURATION OF MAXPRO VMS R300 VIEWER EDITION 63</b>	
OVERVIEW .....	63
BEFORE YOU BEGIN .....	63
ACTIVITIES TO PERFORM IN THIS PHASE .....	63
CHECKING THE CONNECTION WITH MAXPRO VMS SERVER .....	64
CHECKING THE DEVICE LISTING IN THE DEVICES WINDOW .....	65
CHECKING THE LIVE VIDEO FROM CAMERAS .....	66
CHECKING THE PLAYBACK OF RECORDED VIDEO .....	67
CHECKING THE PLAYBACK LOOP IN THE TIMELINE WINDOW .....	68
CHECKING THE PANNING, TILTING, AND ZOOMING .....	69
CHECKING THE ACKNOWLEDGEMENT AND CLEARING OF ALARMS .....	70
CHECKING THE CREATION OF IMAGES .....	72
CHECKING THE CREATION OF CLIPS .....	73
CHECKING THE DEVICE LISTING IN MY DEVICES WINDOW .....	74

---

# ABOUT THIS GUIDE

---

## INTRODUCING MAXPRO<sup>®</sup> VMS R300 VIEWER EDITION

---

MAXPRO<sup>®</sup> VMS R300 Viewer Edition is a scaled-down version of MAXPRO<sup>®</sup> VMS R300 Enterprise Edition software.

Following are the key features of MAXPRO VMS R300 Viewer Edition software.

- **One- stop Solution**- The software is tailored for monitoring multiple Honeywell's DVRs from a single client.
- **DVR Support** - The following five Honeywell DVRs are supported.
  - MAXPRO NVR
  - RapidEye
  - Fusion
  - HRDP
  - HRXD
- **User Interface** - The user interface is based on the Honeywell's flagship MAXPRO VMS R300 Enterprise software.
- **Open Architecture** - The software is built using industry standard protocols and technologies.
- **Scalable** - The software can be upgraded to the MAXPRO VMS R300 Enterprise Edition by purchasing the appropriate license.
- **Easy-to-use Configuration Pages** - The software provides flexible and easy-to-use configuration pages that simplifies the discovery of cameras connected to Honeywell recorders.

## SCOPE

---

This guide helps you in:

- Setting up the hardware for the MAXPRO VMS server and client computers
- Installing the MAXPRO VMS software in server and client computer
- Uninstalling the MAXPRO VMS software
- Configuring the MAXPRO VMS
- Verifying the configuration of MAXPRO VMS

## INTENDED AUDIENCE

This guide is intended for the field and commissioning engineers of MAXPRO VMS.

## INSTALLATION AND COMMISSIONING GUIDE STRUCTURE

The following table describes the contents of each chapter in this guide.

No	Chapter	Description
1	<i>Commissioning Plan</i>	Description of the process involved in commissioning the MAXPRO VMS.
2	<i>Setting up the Client and the Server Computer</i>	<ul style="list-style-type: none"> <li>Hardware specifications for MAXPRO VMS Server and Client computers.</li> <li>Procedures for connecting the monitors, and configuring monitor display properties.</li> </ul>
3	<i>Installing the MAXPRO VMS Software</i>	Procedure for installing MAXPRO VMS software in the client and server computers.
4	<i>Configuring MAXPRO VMS</i>	Configure the MAXPRO VMS.
5	<i>Verifying the Configuration of MAXPRO VMS R300 Viewer Edition</i>	Steps to verify the configuration of MAXPRO VMS R300.

## TYPOGRAPHICAL CONVENTIONS

This guide uses the conventions listed in the following table.

Font	What it represents	Example
Swiss721 BT	Words or characters that you must type. The word “enter” is used if you must type text and then press the Enter or Return key.	Enter the <b>password</b> .
	Menu titles and other items you select	Double-click <b>Open</b> from the <b>File</b> menu.
	Buttons you click to perform actions	Click <b>Exit</b> to close the program.
Trebuchet MS	Heading	<b>Installation</b>
	Cross-reference to external source	Refer to the <b>System Administrator Guide</b> .
	Cross-reference within document	See <i>Installation</i> .

# COMMISSIONING PLAN

---

## OVERVIEW

---

Commissioning is the process of installing, configuring, and setting up the MAXPRO VMS hardware and software. At the end of the commissioning process, the MAXPRO VMS system is equipped for use by operators to perform surveillance operations. The steps in the commissioning process must be performed one after the other for successful deployment of MAXPRO VMS .

## STEPS IN THE COMMISSIONING PROCESS

---

The process of commissioning involves the following phases:

- [Setting up the MAXPRO VMS Server and Client Computers.](#)
- [Installing the MAXPRO VMS Software.](#)
- [Configuring the MAXPRO VMS System.](#)
- [Verifying the Configuration.](#)

## SETTING UP THE MAXPRO VMS SERVER AND CLIENT COMPUTERS

- MAXPRO VMS server and client can be installed on the same machine provided it meets the minimum hardware requirements. Additional clients can be connected to the server to a maximum of 5.
- Connecting the monitors to the computers after ensuring that they meet the hardware requirements. You can connect up to four monitors to each computer. After connecting the monitors, configure the monitor display properties.

---

**Note:** See the chapter [Setting up the Client and the Server Computer](#) for information on hardware requirements, how to connect the monitors to the computers, how to configure the display properties.

---

## INSTALLING THE MAXPRO VMS SOFTWARE

Installing the software involves:

- Ensuring that the server and client computers meet the minimum software requirements such as operating system and anti virus software.

- Installing the MAXPRO VMS R300 Viewer Edition software.

---

**Note:** See the chapter [Installing the MAXPRO VMS Software](#) for information on software requirements and installation instructions for the MAXPRO VMS R300 Viewer Edition software.

---

## CONFIGURING THE MAXPRO VMS SYSTEM

In this phase, you need to configure the MAXPRO VMS through the user interface. Before you start configuring the MAXPRO VMS, perform the following:

- Determine the number of sites to add in the MAXPRO VMS system. A default site is available in MAXPRO VMS. You can use this default site only if one site is planned for the location.

---

**Note:** A site is typically a group of cameras that are geographically located together but can be cameras grouped by similar scenes.

---

- Determine the number of partitions to be created for each site. A default global partition is automatically created when you add a site in MAXPRO VMS.
- Ensure that the recorders and other video devices such as cameras are powered on and connected to the network.

---

**Note:** Partitions are used to limit access of cameras to users. Create partitions for cameras that need limited user access.

---

- Determine the IP addresses and username/password of the recorders. The IP addresses are required to add the devices to the MAXPRO VMS system.
- Determine to which site each recorder and camera needs to be associated.
- Determine to which partition each recorder, camera needs to be associated.
- Determine the number of users for each site. You need to create users and associate them to roles while configuring the MAXPRO VMS system.

---

**Note:** See the chapter [Configuring MAXPRO VMS](#) for information on how to configure the MAXPRO VMS system.

---

## VERIFYING THE CONFIGURATION

Verifying the configuration involves checking whether the surveillance operations can be performed using MAXPRO VMS. Surveillance operations include, viewing the live video, performing the pan, tilt, and zoom on the video, and starting the video recording.

---

**Note:** See the chapter [Verifying the Configuration of MAXPRO VMS R300 Viewer Edition](#) for information on how to perform the verification.

---

This page is intentionally left blank

# SETTING UP THE CLIENT AND THE SERVER COMPUTER

## OVERVIEW

Setting up the server and client computers is the first phase in the commissioning process.

## BEFORE YOU BEGIN

Determine the following at the location:

- Number of server and client computers
- Hardware configuration of the computers

## ACTIVITIES TO PERFORM IN THIS PHASE

The following table lists the activities to perform in this phase.

Tasks	See the section...
Ensure that the hardware configuration of the server and client computers meet the minimum specifications.	<a href="#">Hardware Specifications.</a>
Connect the monitors configuring their display properties.	<a href="#">Connecting the Monitors.</a>
Configure the monitor display properties	<a href="#">Configuring the Monitor Display Properties</a>

## HARDWARE SPECIFICATIONS

The MAXPRO VMS R300 Viewer Edition must meet the minimum hardware specifications. This is necessary for proper and efficient working of the system.

There are two types of hardware configurations for the server and client namely, minimum and recommended. The minimum configuration uses the minimum hardware specifications. The recommended configuration uses higher hardware specifications for better performance..

**Table 2-1 MAXPRO VMS R300 Viewer Edition- Minimum Specifications**

Specification	Description
<b>Processor</b>	Intel Core <sup>®</sup> 2 Duo 3.00 GHz / Dual Core 3.00 GHz/1333 MHz/4 MB L2
<b>Operating System</b>	Microsoft <sup>®</sup> Windows XP Professional SP2 (32-bit only) or Microsoft <sup>®</sup> Windows 7 Pro (32-bit and 64-bit) Microsoft <sup>®</sup> Windows Server 2003 (32bit) or Microsoft <sup>®</sup> Windows Server 2008 R2
<b>RAM</b>	4 GB
<b>Secondary Storage</b>	DVD-RW drive
<b>Hard Disk</b>	Minimum 100GB Partition drive
<b>Network connection</b>	1Gbit/sec or greater
<b>Keyboard / Mouse</b>	12 function-key keyboard and mouse
<b>Monitor resolution</b>	1280x1024 pixels; 65K colors non-interlaced
<b>Graphics Adapter</b>	Display adapter - Direct X 9 compatible 256 MB per monitor or greater
<b>Database</b>	Microsoft SQL Express 2008 is automatically installed while installing MAXPRO VMS Server

**Table 2-2 MAXPRO VMS R300 Viewer Edition - Recommended Specifications**

Specification	Description
<b>Processor</b>	Intel Core <sup>®</sup> 2 Extreme 3.00 GHz / Quad Core 3.00 GHz/1333 MHz/12 MB
<b>Operating System</b>	Microsoft <sup>®</sup> Windows XP Professional SP2 (32-bit only) or Microsoft <sup>®</sup> Windows 7 Pro (32-bit and 64-bit) Microsoft <sup>®</sup> Windows Server 2003 (32bit) or Microsoft <sup>®</sup> Server 2008 R2
<b>RAM</b>	4 GB
<b>Secondary Storage</b>	DVD-RW drive

**Table 2-2 MAXPRO VMS R300 Viewer Edition - Recommended Specifications**

Specification	Description
<b>Hard Disk</b>	Minimum 100GB Partition drive
<b>Network connection</b>	1Gbit/sec or greater
<b>Keyboard / Mouse</b>	12 function-key keyboard and mouse
<b>Monitor resolution</b>	1280x1024 pixels; 65K colors non-interlaced
<b>Graphics Adapter</b>	Display adapter - Direct X 9 compatible 256 MB per monitor or greater
<b>Database</b>	Microsoft SQL Express 2008 is automatically installed while installing MAXPRO VMS Server

## CONNECTING THE MONITORS

---

The number of monitors that you can connect to the computer depends on the type of graphics adapter. For example, up to four monitors can be connected to a dual head graphics adapter.

---

**Caution:** Before you begin, ensure that the computer and monitors are turned off.

---

## CONFIGURING THE MONITOR DISPLAY PROPERTIES

The recommended display settings for the monitor are dialog box resolution of 1280 x 1024 pixels and color quality of 65K colors non-interlaced. The display settings can be configured from the Windows control panel or from the Windows desktop through the context menu.

### To configure the display settings from the context menu in the Windows desktop

1. Right-click the Windows desktop to display the context-menu.
2. Click **Properties**. The **Display Properties** dialog box appears.
3. Click the **Settings** tab.
4. Select the dialog box resolution and color quality.
5. Click **Apply** to save the settings.
6. Click **OK** to close the dialog box.

### To configure the display settings from the Windows control panel

1. Go to Windows control panel.

---

**Note:** To open the control panel, choose **Start > Settings > Control Panel**.

---

2. Double-click the **Display** icon. The **Display Properties** dialog box appears.
3. Click the **Settings** tab.
4. Select the dialog box resolution and color quality.
5. Click **Apply** to save the settings.
6. Click **OK** to close the dialog box.

# INSTALLING THE MAXPRO VMS SOFTWARE

## OVERVIEW

This chapter describes the procedures for installing MAXPRO VMS Viewer Edition software. Follow the appropriate section in this chapter to complete the installation.

## BEFORE YOU BEGIN

1. Ensure that the client and server computers meet the software requirements.

## SYSTEM REQUIREMENTS

The client and server computers must meet the following software specifications.

**Table 2-1 Software Specifications**

<b>Operating System</b>	Microsoft® Windows 7 Professional (64-Bit and 32-Bit) Microsoft® Windows XP Professional (32-Bit) for MAXPRO VMS Workstation  Microsoft® Windows Server 2008 R2 Standard Edition (64 Bit Version) on 64 Bit Server or Microsoft® Windows Server 2003 R2 Standard Edition Service Pack 2 (32 Bit Version) on 32 Bit Server for MAXPRO VMS Server.
<b>Antivirus</b>	McAfee® VirusScan 8.8, or Symantec™ Antivirus V10
<b>Monitor Resolution</b>	1024x768 pixels, 65K colors non-interlaced

## INSTALLING THE MAXPRO VMS SOFTWARE

---

To complete the MAXPRO VMS installation follow the procedures in these sections.

1. First, [How to Install MAXPRO VMS Software](#)
2. Choose the installation that best suits your requirements and follow the appropriate steps.
  - [Full Installation](#)
  - [Client Only Installation](#)

## HOW TO INSTALL MAXPRO VMS SOFTWARE

### To install MAXPRO VMS software

1. Insert the MAXPRO VMS R300 Viewer Edition DVD in the DVD drive. The setup runs automatically. If the setup does not run automatically, browse to the setup folder in the DVD and double-click **Setup.exe**. The **Welcome** dialog box appears.

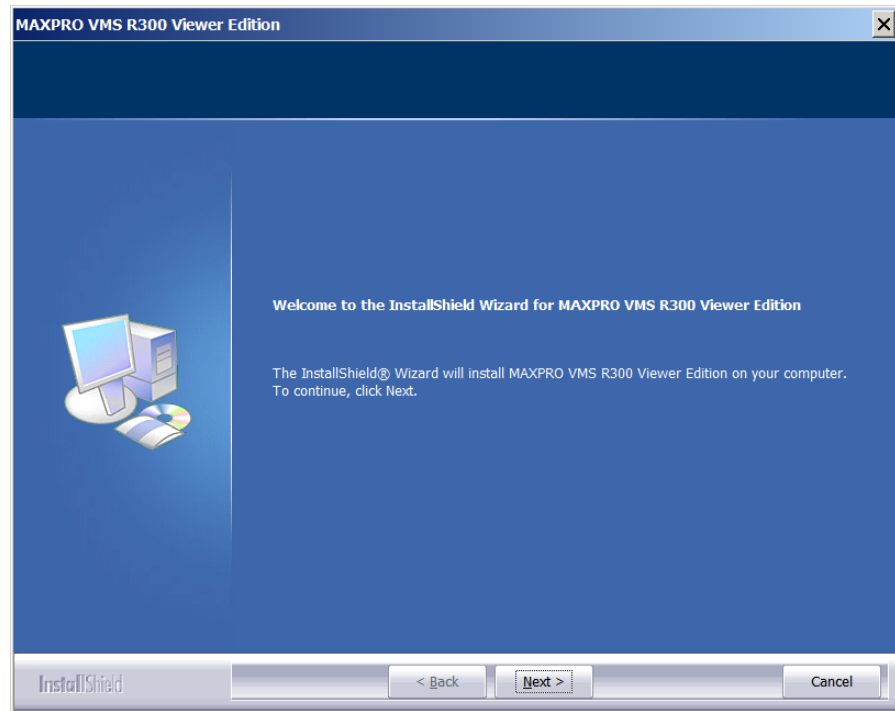


Figure 3-1 Welcome

2. Click **Next**. The **License Agreement** dialog box appears. The dialog box displays the license agreement for the MAXPRO VMS VMS.



Figure 3-2 License Agreement

3. Read the license agreement, and then click **I accept the terms of the license agreement** to accept the license agreement.
4. Click **Next**. The **Choose Destination Location** dialog box appears.

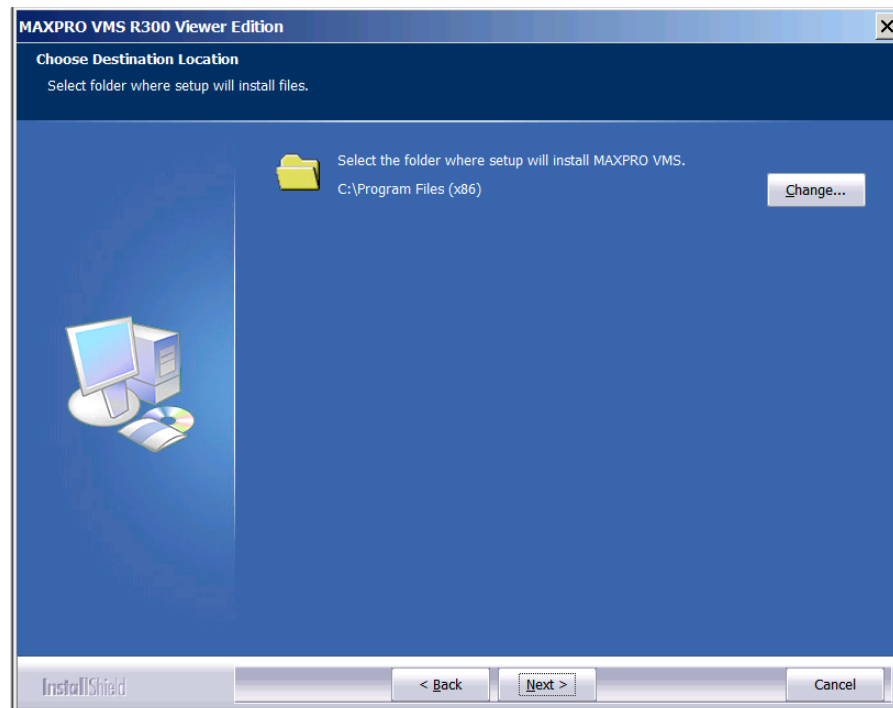


Figure 3-3 Choose Destination Location

**Note:** Click **Change** to change the default destination folder, and then select the folder where MAXPRO VMS must be installed.

5. Click **Next**. The **Validation of User Credentials** dialog box appears.

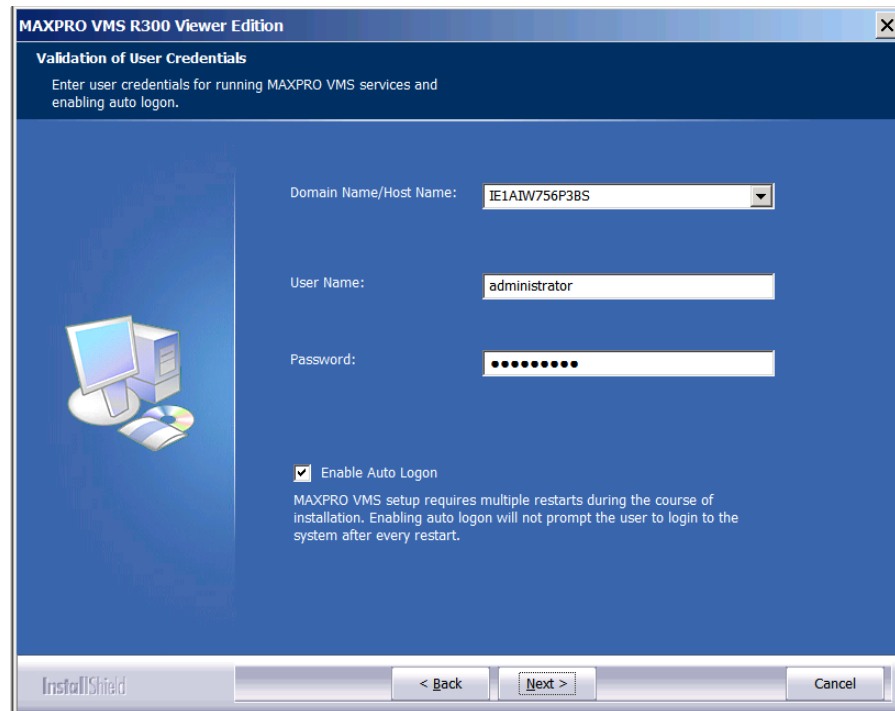


Figure 3-4 Validation of User Credentials

6. In the **Domain Name/Host Name** list, type the domain name if you know it or select one from the list.
7. In the **User Name** box, type your Windows user name.
8. In the **Password** box, type your Windows password.
9. Select the **Enable Auto Logon** check box if you want the computer to reboot on its own whenever required, during the installation process. The following message appears.

**Note:** You are prompted to reboot multiple times while installing MAXPRO VMS R300 Viewer Edition, auto log on avoids manual intervention during multiple reboots.

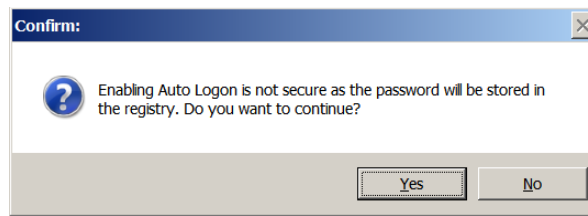


Figure 3-5 Enabling Auto Logon

10. Click **Yes** to proceed with the installation. The **Installation Type** dialog box appears.

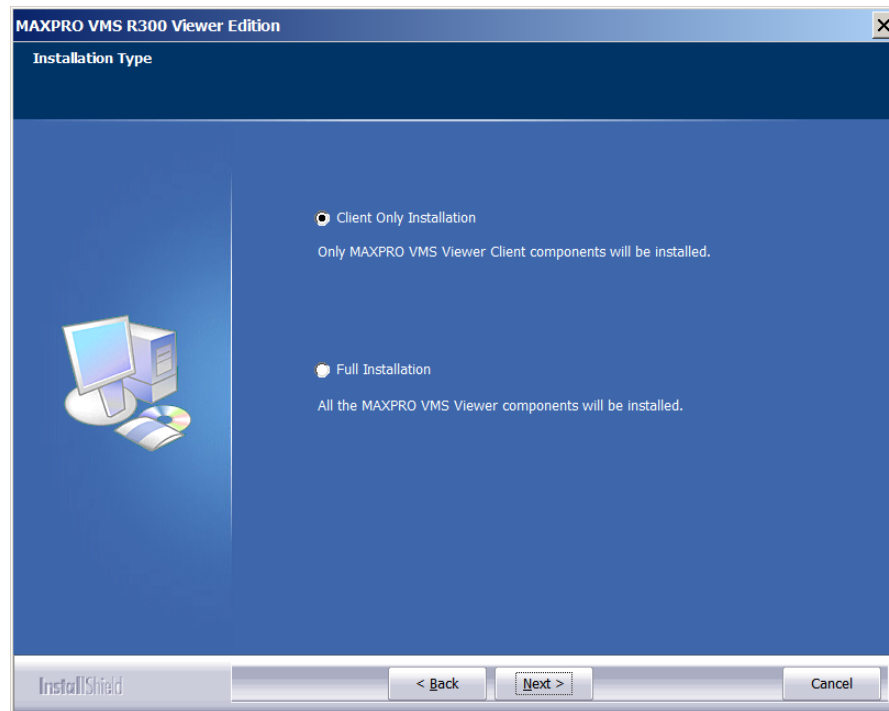


Figure 3-6 Installation Type

11. Select **Client Only Installation** or **Full Installation** as required. Use the instructions of one of the following sections that corresponds to the feature that you are installing, [Full Installation](#) or [Client Only Installation](#).

Table 2-2 Select Features to Install

<b>Full Installation</b>	Installs all the MAXPRO VMS R300 Viewer Edition components (Server and Client). See <a href="#">Full Installation</a> .
<b>Client Only Installation</b>	Installs only the client components of MAXPRO VMS. See <a href="#">Client Only Installation</a> .

## FULL INSTALLATION

To perform full installation

1. Perform steps 1 through 11 of [How to Install MAXPRO VMS Software](#), select **Full Installation** in the **Installation Type** dialog box, and then click **Next**. The **Select Features** dialog box appears.

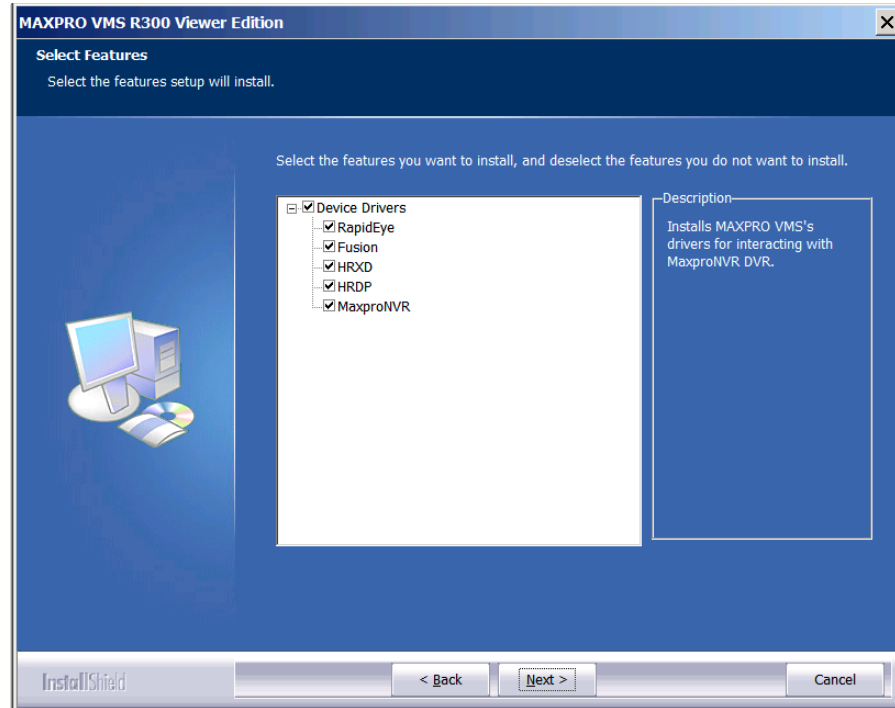


Figure 3-7 Select Features

2. Under **Device Drivers**, select the check boxes corresponding to the drivers you want to install.

---

**Note:** Clearing the check boxes for the drivers that are not used improves the install time. The drivers can be installed at a later time if required.

---

3. Click **Next**. The **Start Copying Files** dialog box appears.

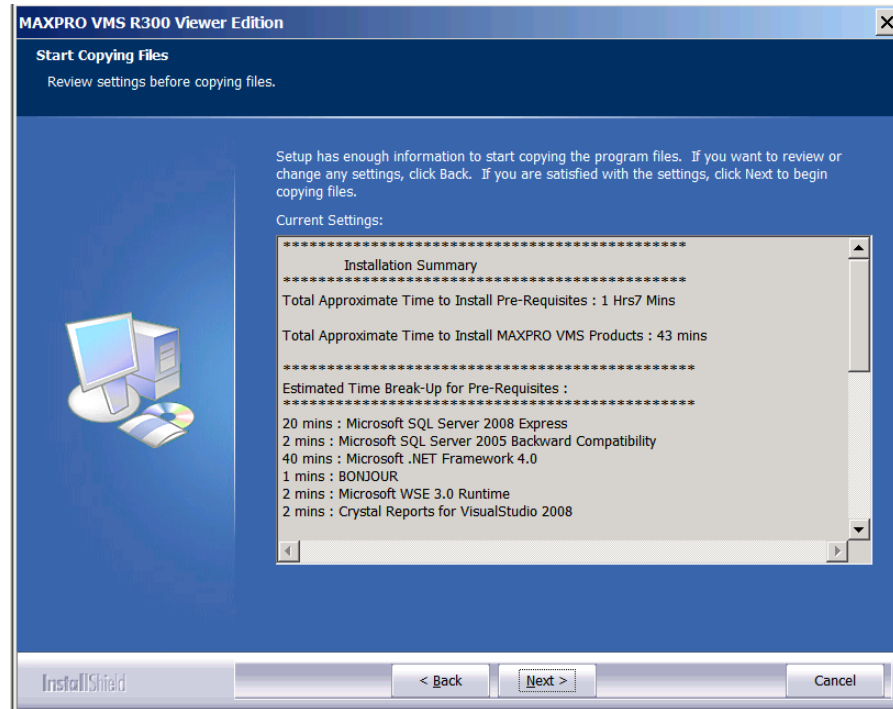


Figure 3-8 Start Copying Files

4. If you want to review or change any settings click **Back**.

### Note

- The **Start Copying Files** dialog box lists the total approximate time for installing the prerequisites and total approximate time for installing MAXPRO VMS R300 Viewer Edition components. Please note that prerequisites take more time for installation than the MAXPRO VMS R300 Viewer Edition components.
- The pre-requisites are Microsoft components required for running of the MAXPRO VMS application.

5. Click **Next**. The following message appears.

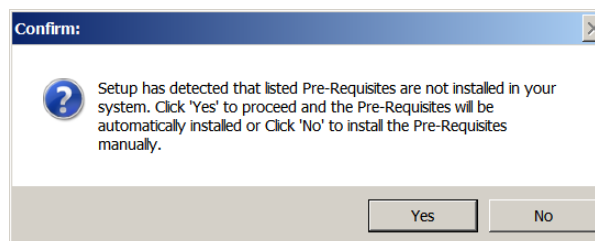


Figure 3-9 Prerequisites Installation Confirmation

6. Click **Yes** to install the prerequisites automatically, else click **No** to install the prerequisites manually.

**Note:** From [step 7](#) onwards till the end of the installation, the prerequisites and MAXPRO VMS components are installed automatically without requiring any manual intervention

7. The SQL Server 2008 Express setup status appears.

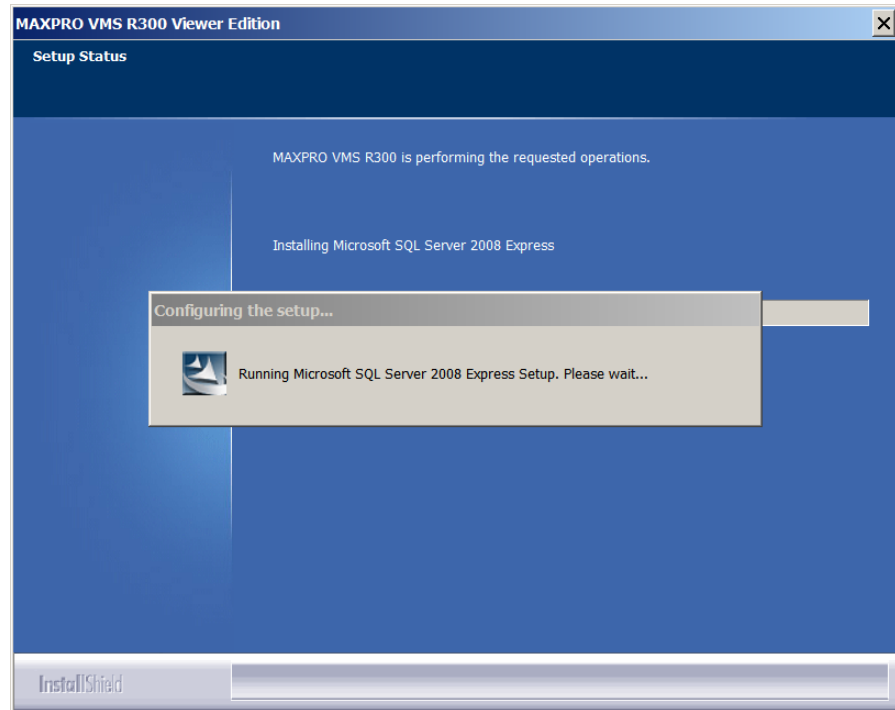
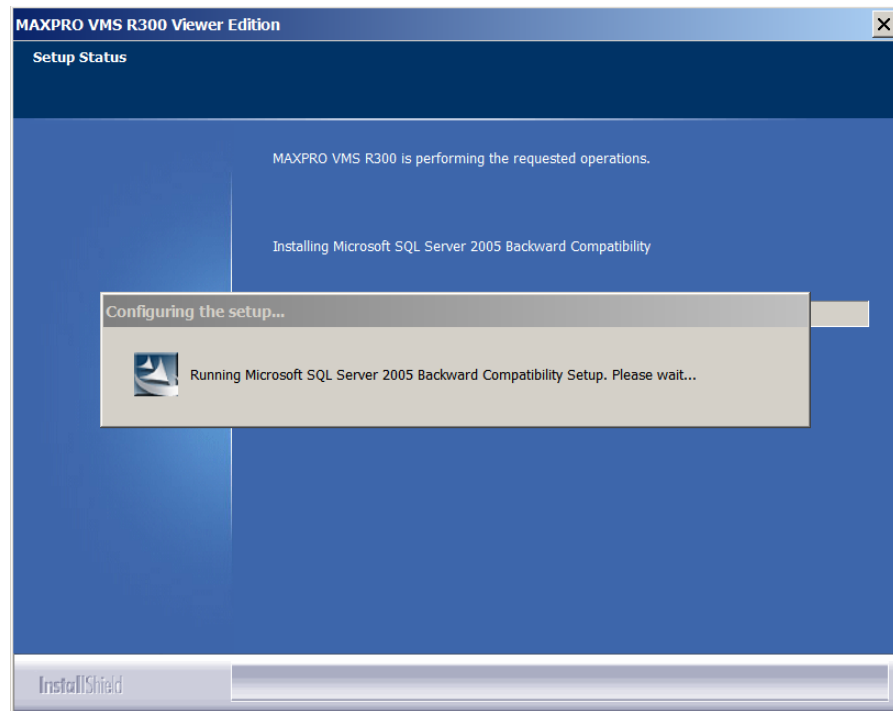


Figure 3-10 SQL Server 2008 Express Setup

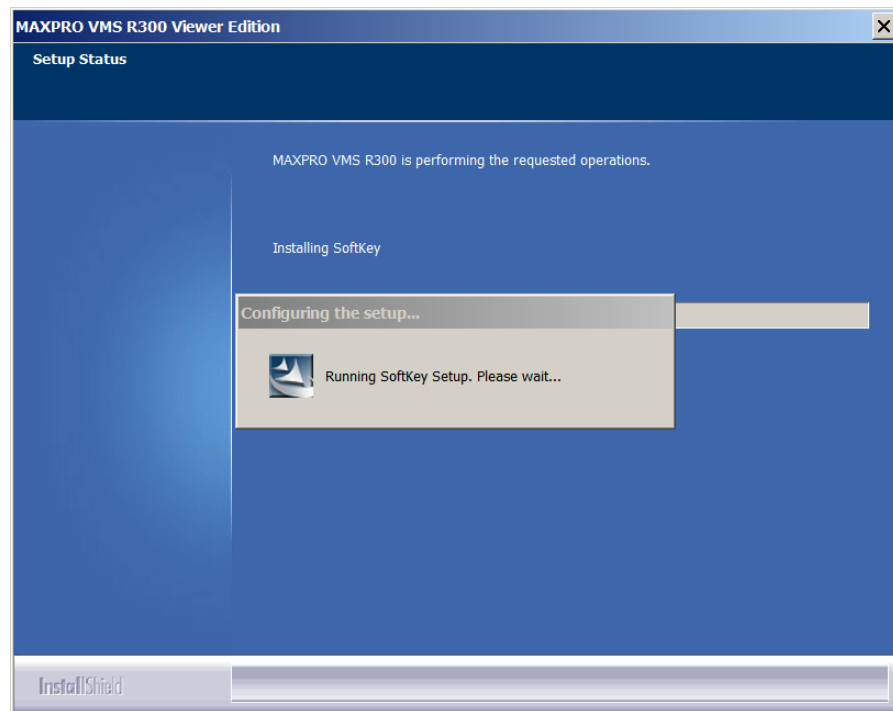
- Your computer restarts automatically after Microsoft SQL Server 2008 Express is successfully installed.

8. After restarting, the Microsoft SQL Server 2005 Compatibility setup status appears.



*Figure 3-11 Microsoft SQL Server 2005 Compatibility Setup*

- Your computer restarts automatically after Microsoft SQL Server 2005 Backward Compatibility is successfully installed.
9. After restarting, the SoftKey setup status appears.



*Figure 3-12 SoftKey Setup*

- Your computer restarts automatically after SoftKey is successfully installed.

10. After restarting, the Microsoft .NET Framework 4.0 setup status appears.

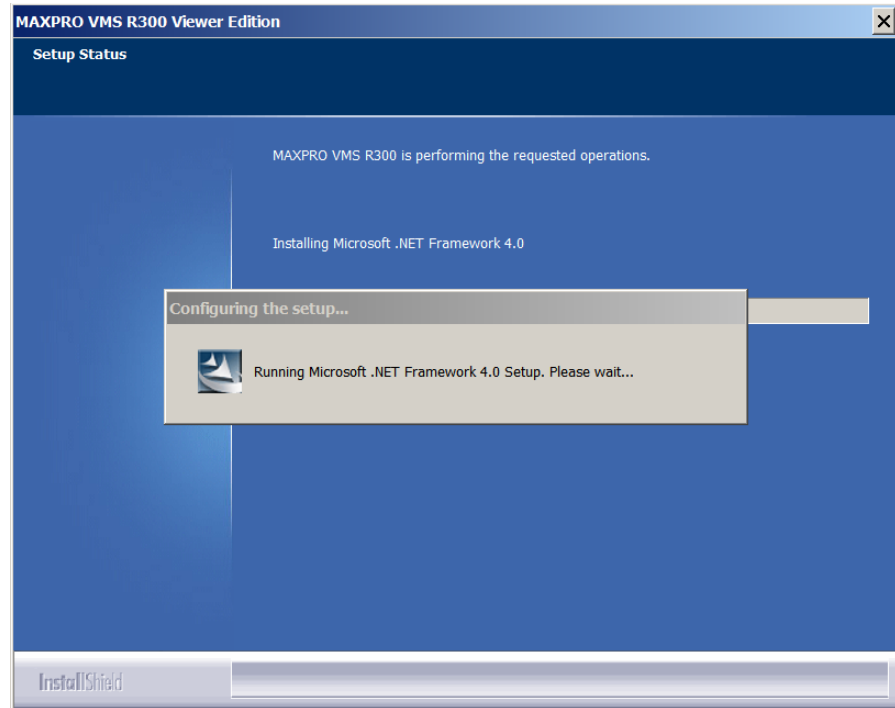


Figure 3-13 Microsoft .NET Framework 4.0 Setup

- Your computer restarts after Microsoft .NET Framework 4.0 is successfully installed.
11. After restating, all the Trinity Services are stopped and the MAXPRO VMS Server setup status appears.

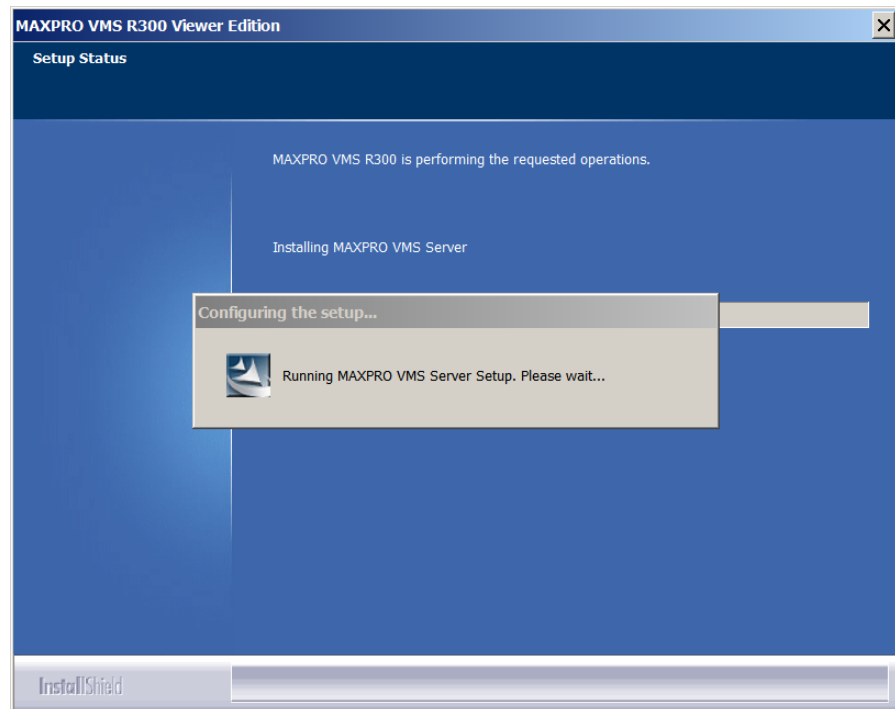


Figure 3-14 MAXPRO VMS Server Setup

12. After MAXPRO VMS Server is successfully installed, the MAXPRO VMS Scheduler setup appears.

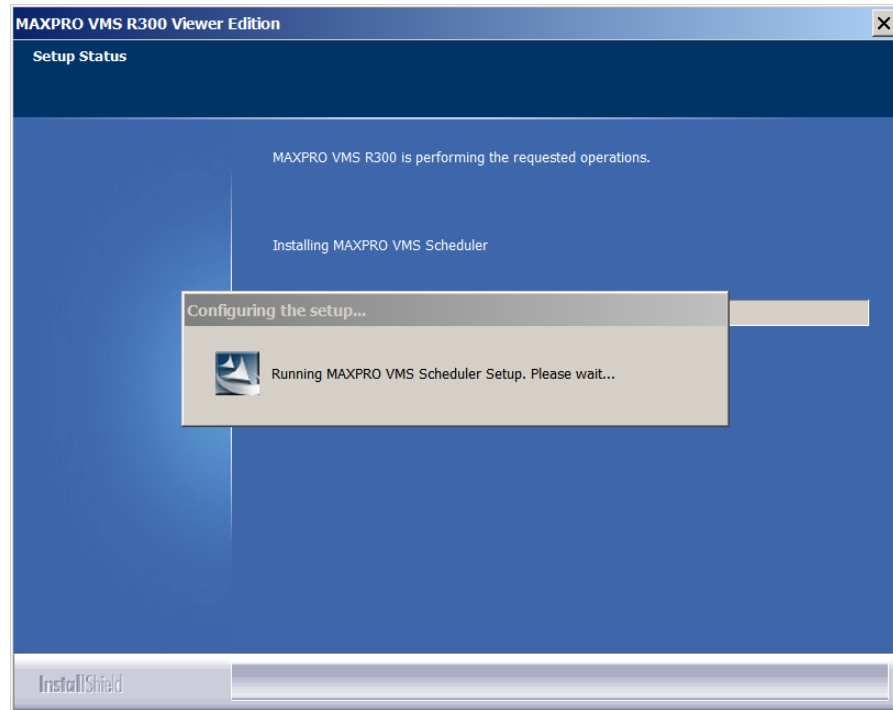


Figure 3-15 MAXPRO VMS Scheduler Setup

13. After MAXPRO VMS Scheduler is successfully installed, the Trinity Framework setup status appears.

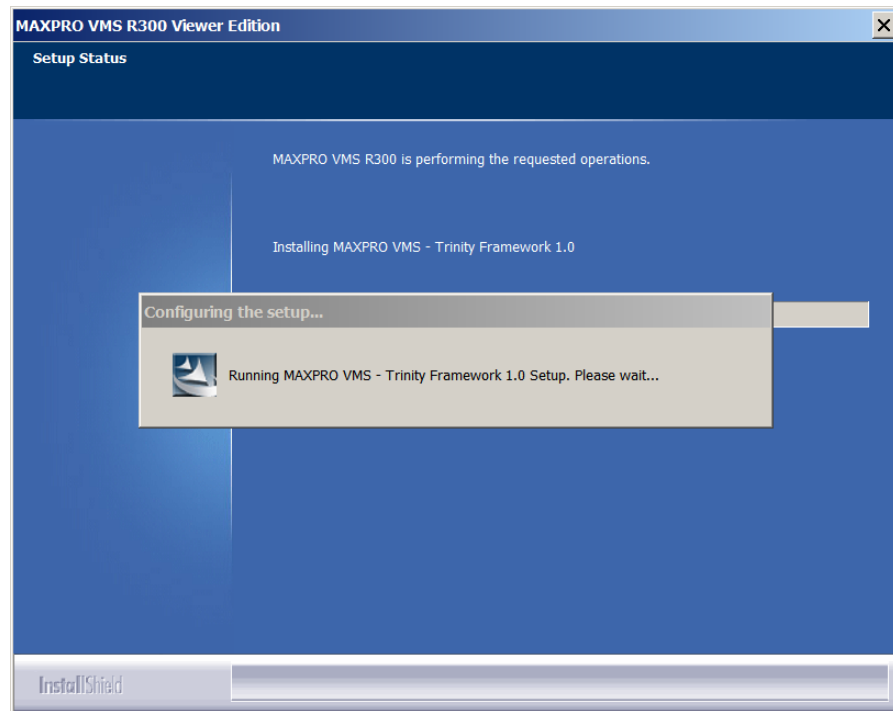


Figure 3-16 MAXPRO VMS Trinity Framework Setup

14. After the Trinity Framework is successfully installed, the Rapid Eye driver setup status appears.

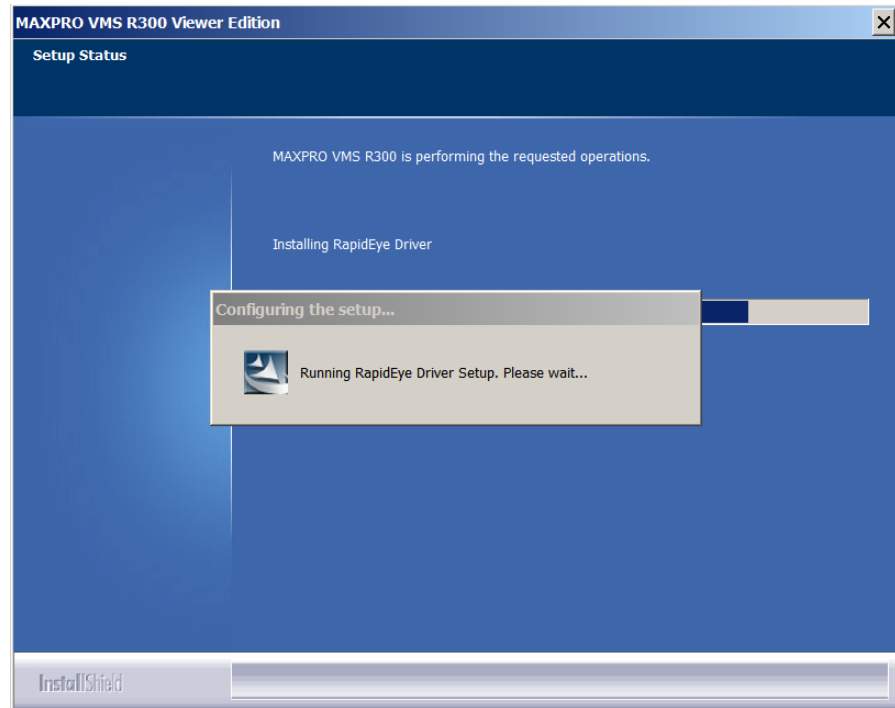


Figure 3-17 Rapid Eye Driver Setup

15. After the RapidEye driver is successfully installed, the PSIA IP Adapter setup status appears.

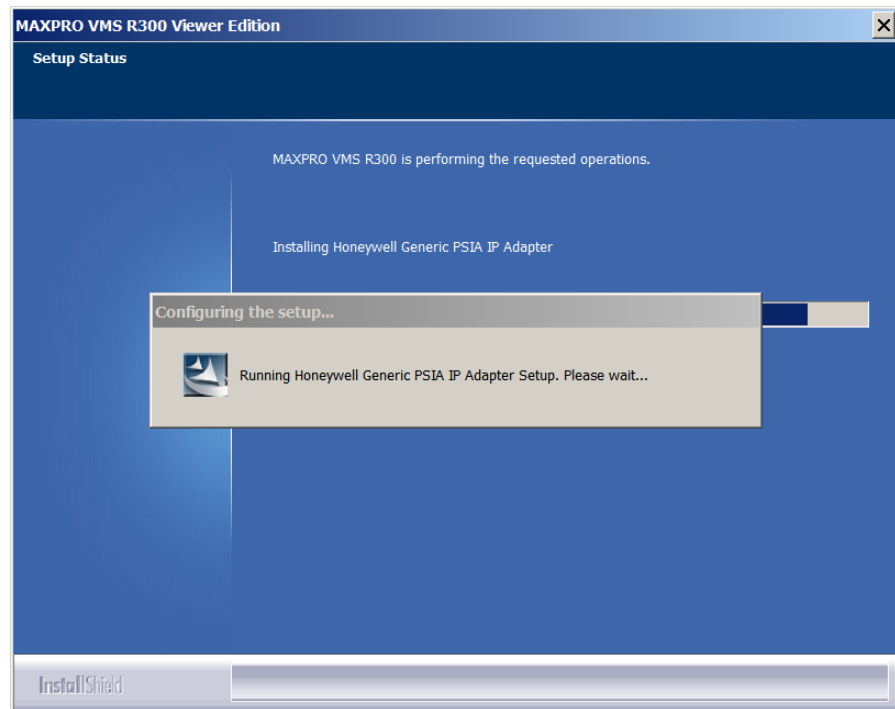


Figure 3-18 PSIA IP Adapter Setup

16. After the PSIA IP Adapter is successfully installed, the HD3MDIP Adapter setup status appears.

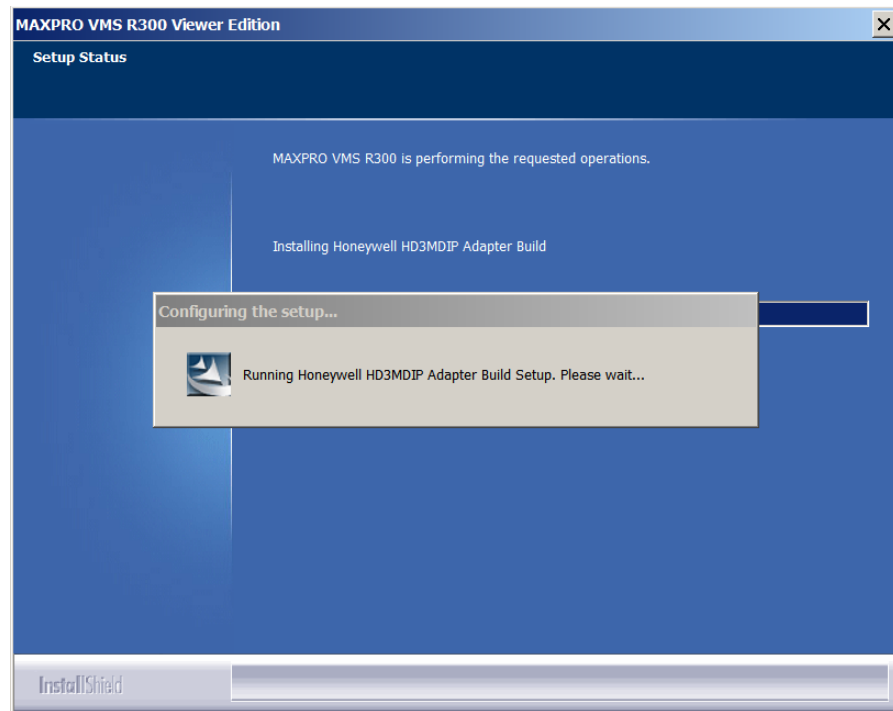


Figure 3-19 HD3MDIP Adapter Setup

17. After the HD3MDIP Adapter is successfully installed, the Honeywell IP Adapter setup status appears.

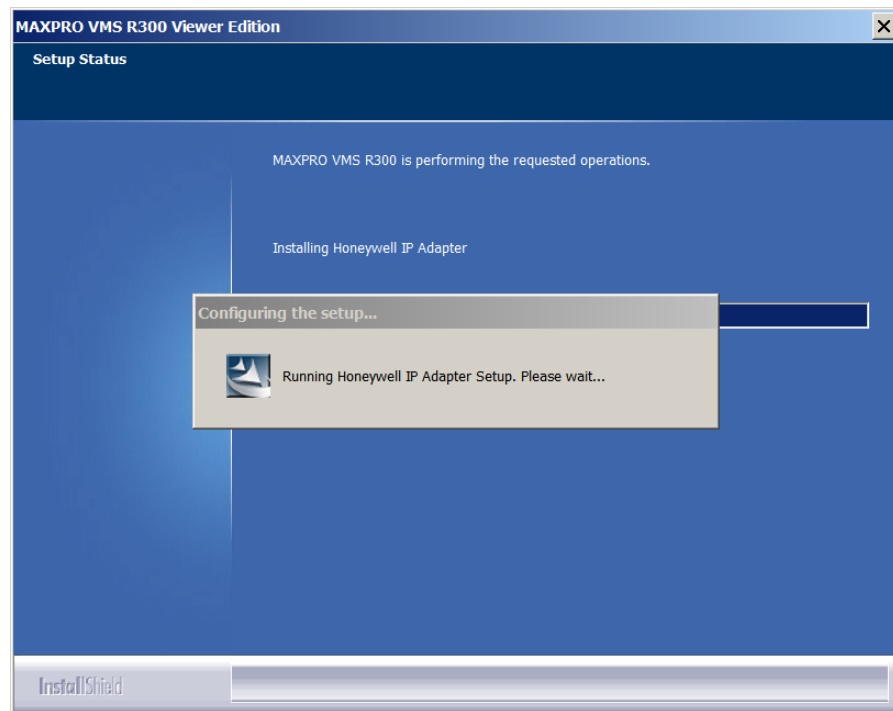


Figure 3-20 Honeywell IP Adapter Setup

18. After the Honeywell IP Adapter is successfully installed, the Fusion driver setup status appears.

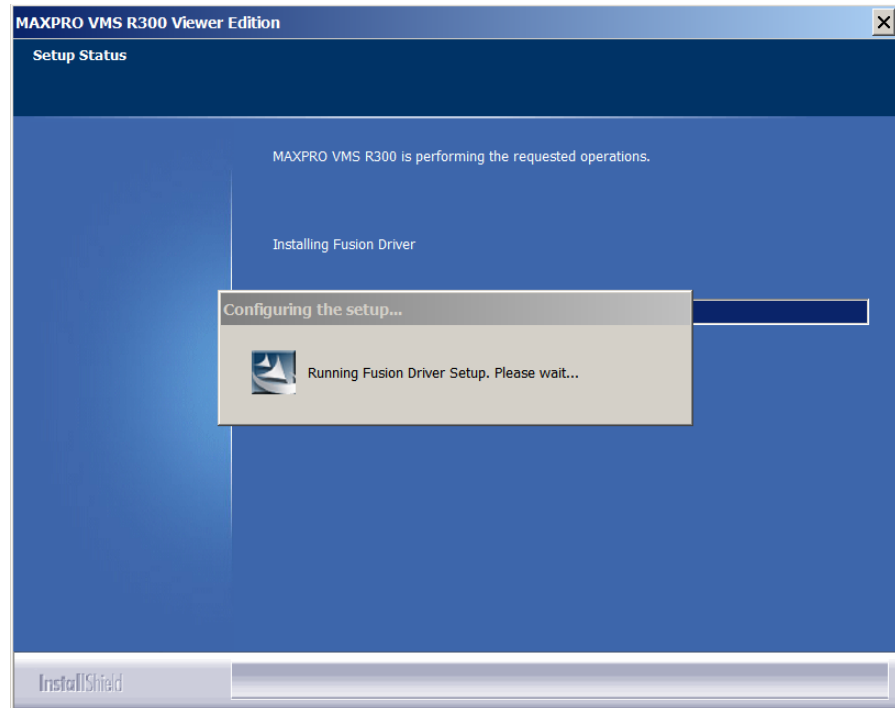


Figure 3-21 Fusion Driver Setup

19. After the Fusion driver is successfully installed, the HRXD setup status appears.

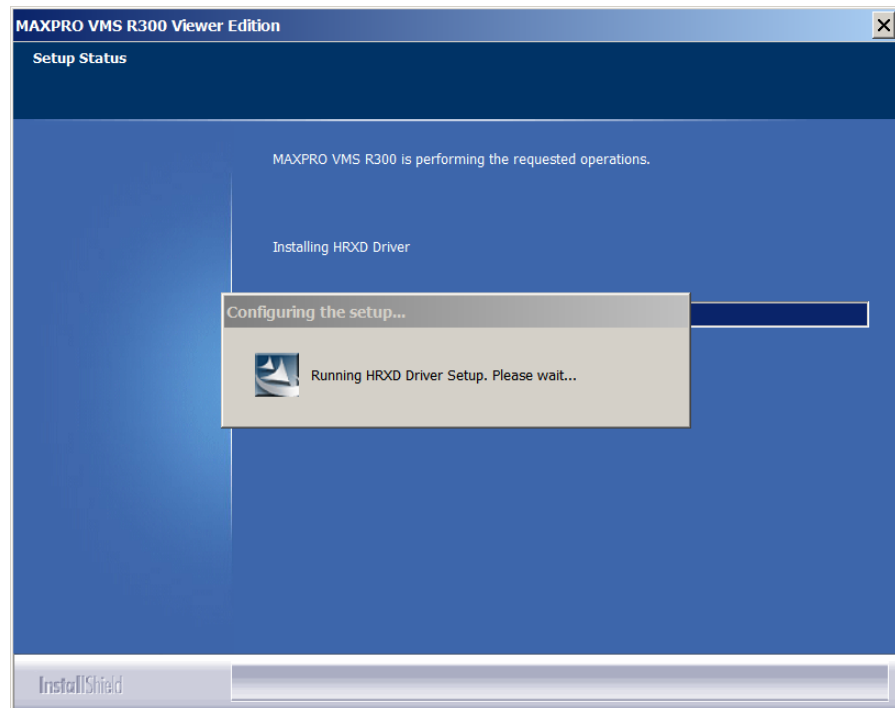


Figure 3-22 HRXD Setup

20. After the HRXD driver is successfully installed, the HRDP driver setup status appears.

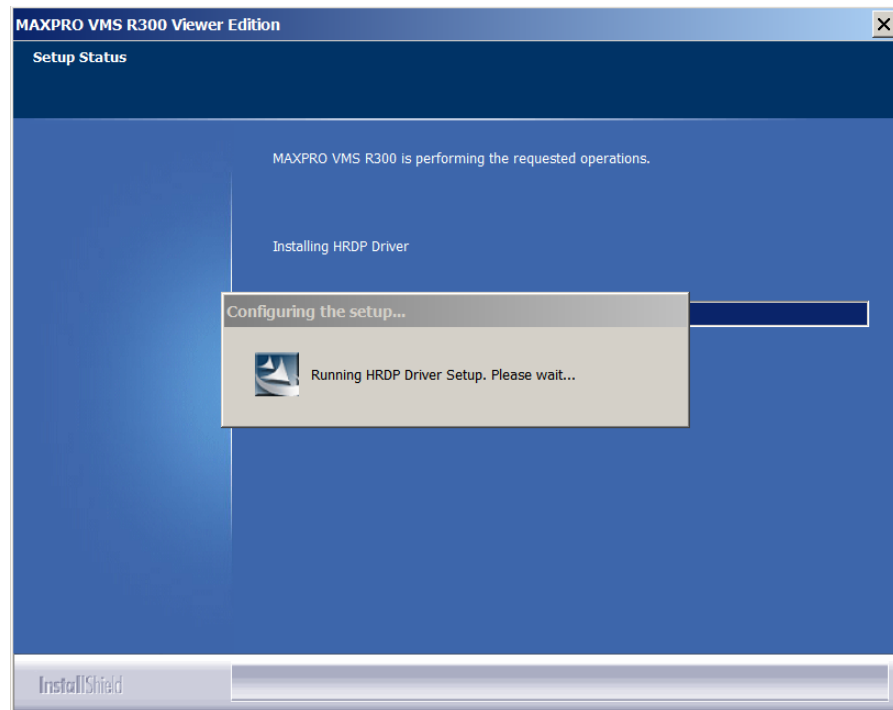


Figure 3-23 HRDP Driver Setup

21. After the HRXD driver is successfully installed, the MAXPRO NVR driver setup status appears.

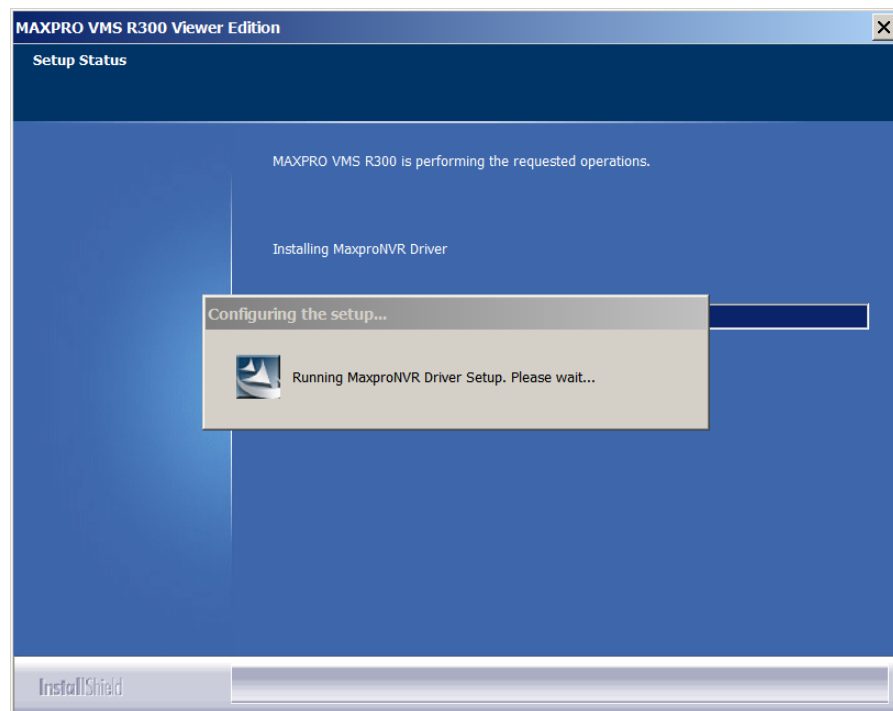


Figure 3-24 MAXPRO NVR Driver Setup

22. After the MAXPRO NVR driver is successfully installed, the BONJOUR setup status appears.

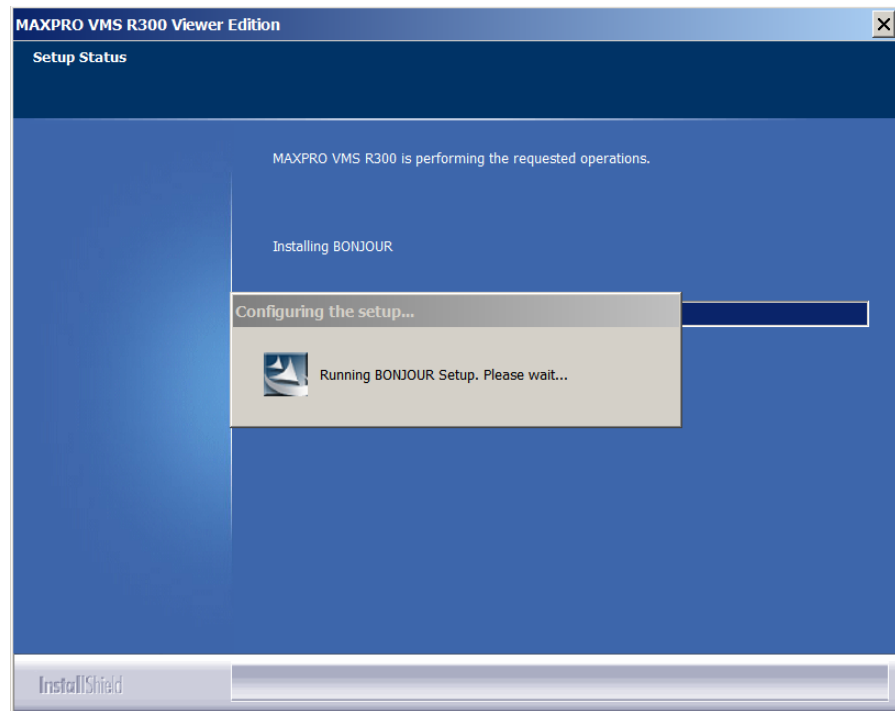


Figure 3-25 BONJOUR Setup

23. After the BONJOUR is successfully installed, the HD3MDIP ActiveX setup status appears.

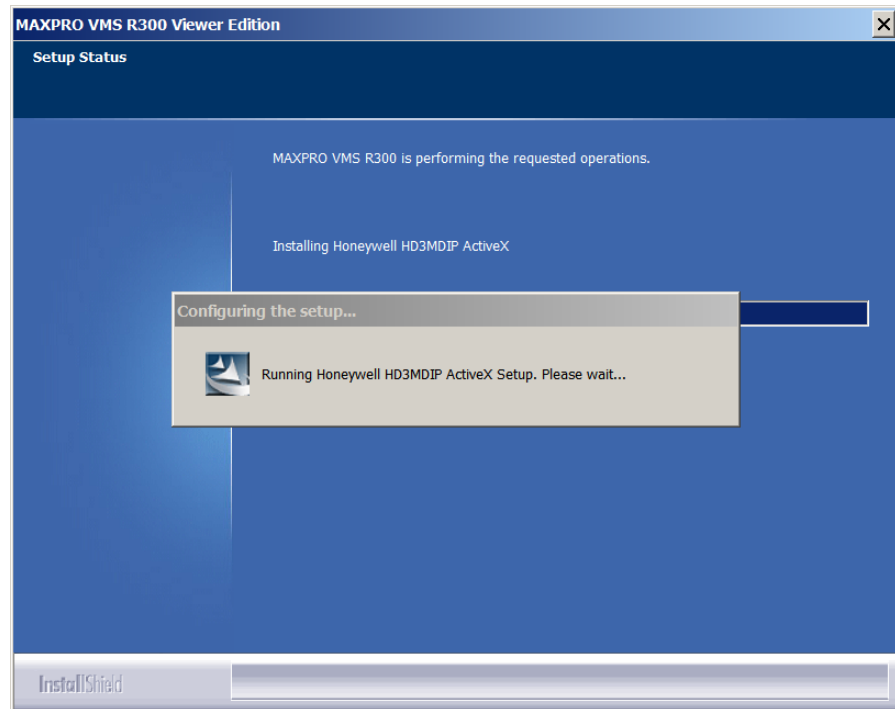


Figure 3-26 HD3MDIP ActiveX Setup

24. After HD3MDIP ActiveX is successfully installed, the HD4MDIP ActiveX setup status appears.

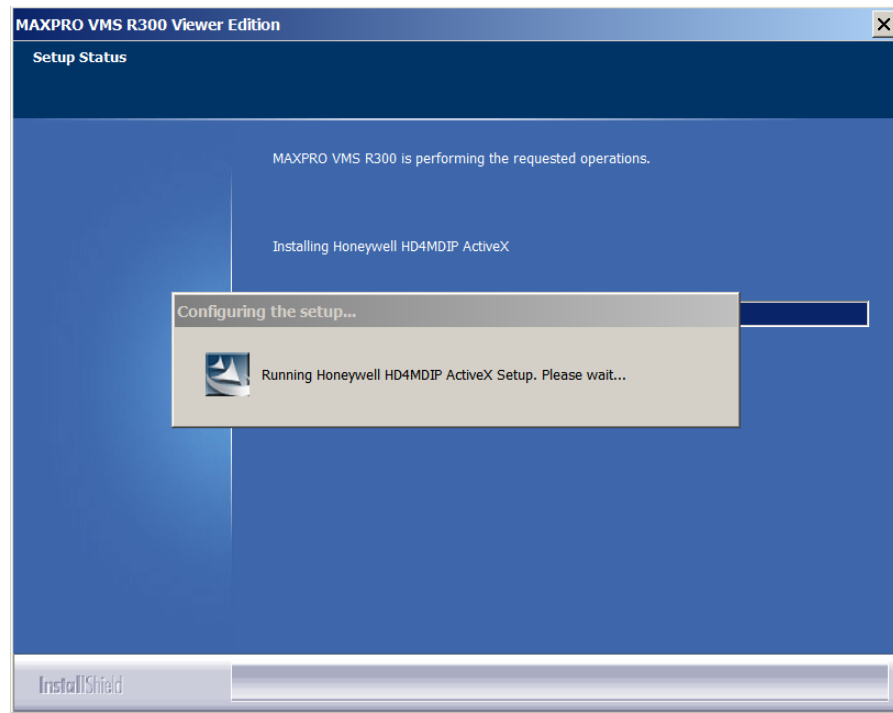


Figure 3-27 HD4MDIP ActiveX Setup

25. After HD4MDIP ActiveX is successfully installed, the Microsoft WSE 3.0 setup status appears.

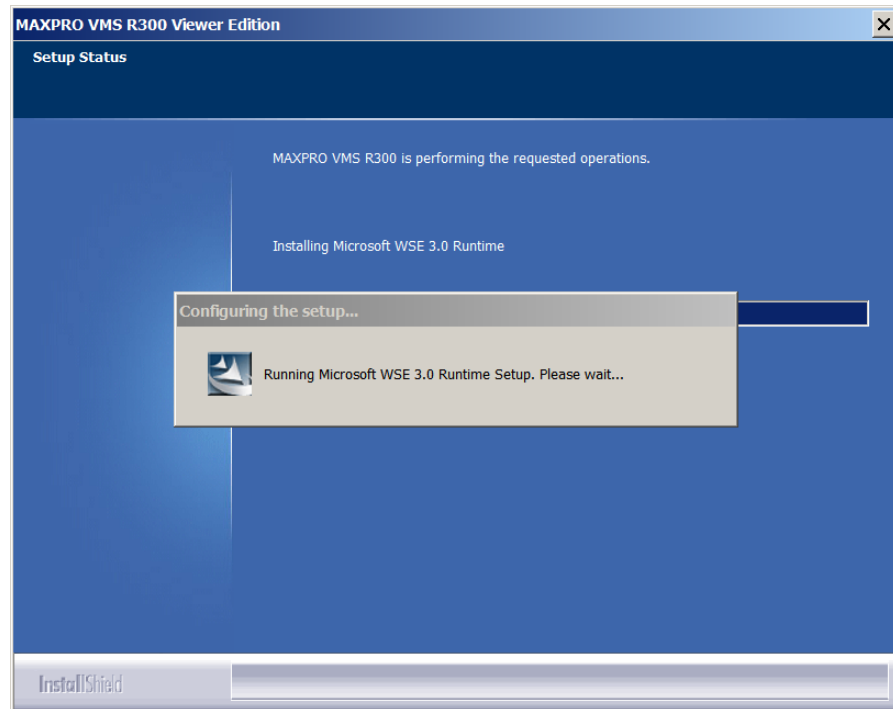


Figure 3-28 Microsoft WSE 3.0 Setup

26. After Microsoft WSE 3.0 is successfully installed, the Honeywell ONVIF IP Adapter setup status appears.

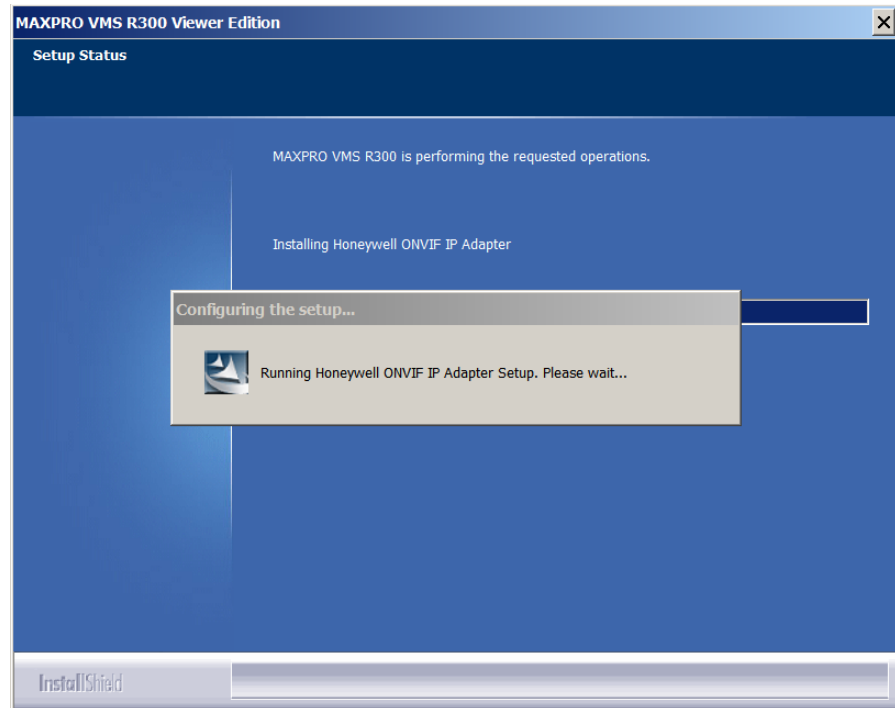


Figure 3-29 Honeywell ONVIF IP Adapter Setup

27. After Honeywell ONVIF IP Adapter is successfully installed, the Crystal Reports for Visual Studio 2008 setup status appears.

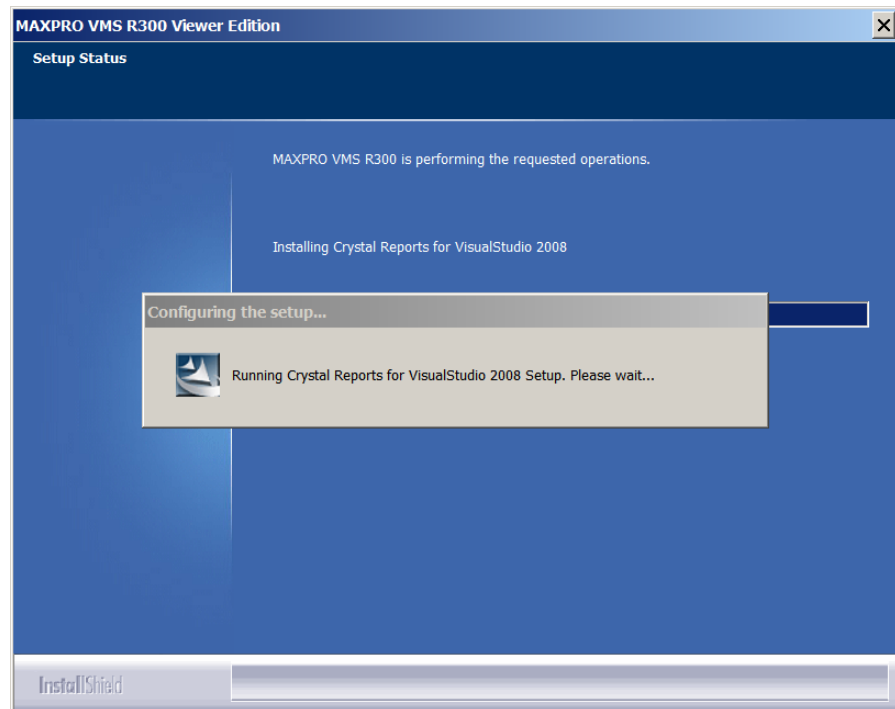


Figure 3-30 Crystal Reports for Visual Studio 2008 Setup

28. After the Crystal Reports for Visual Studio 2008 is successfully installed, the MAXPRO VMS Client setup status appears.

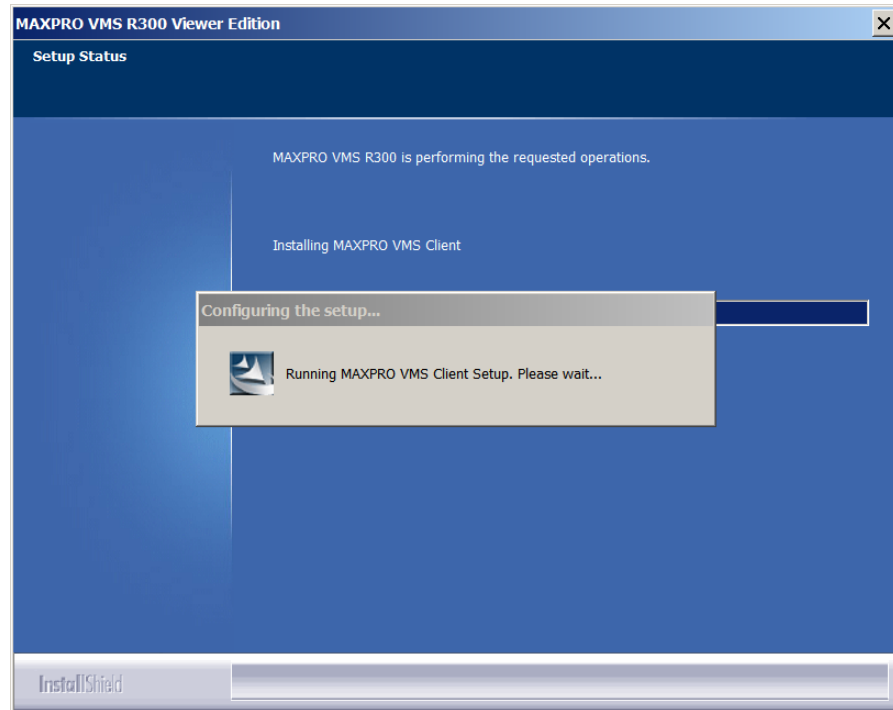


Figure 3-31 MAXPRO VMS Client Setup

29. After MAXPRO VMS Client is successfully installed, the Install Shield Wizard complete dialog box appears.

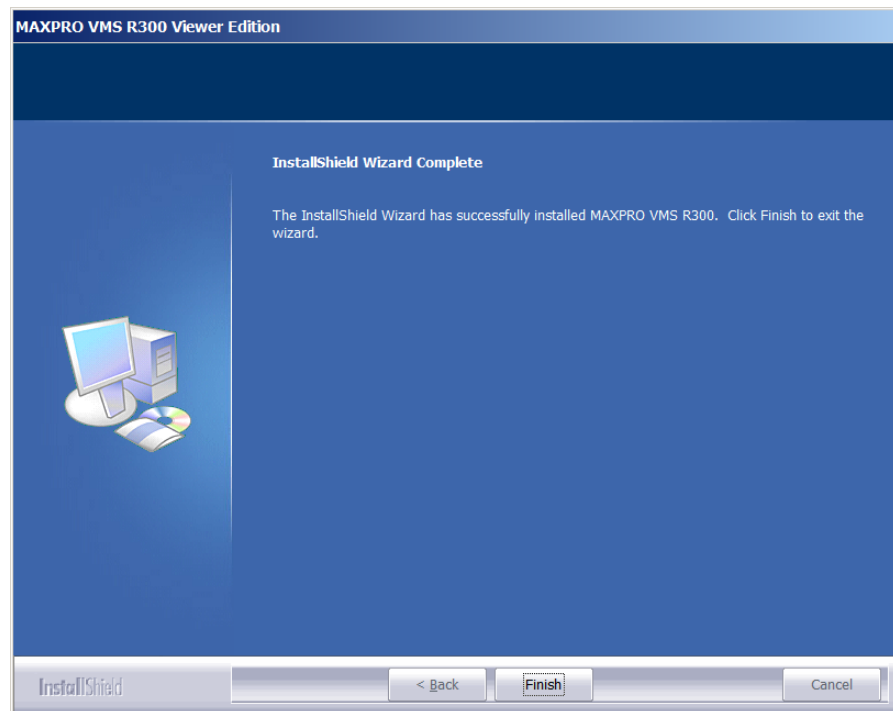


Figure 3-32 Install Shield Wizard Complete

30. Click **Finish** to complete the full installation. Your computer reboots automatically. The installation is complete after the reboot operation.

## CLIENT ONLY INSTALLATION

**Note:** The Client connects to a MAXPRO server application. At least one server must to be installed to use the Client only installation.

To perform client only installation

1. Perform steps 1 through 11 of [How to Install MAXPRO VMS Software](#). The **Installation Type** dialog box appears.
2. Select **Client Only Installation**, and then click **Next**. The **Select Features** dialog box appears.

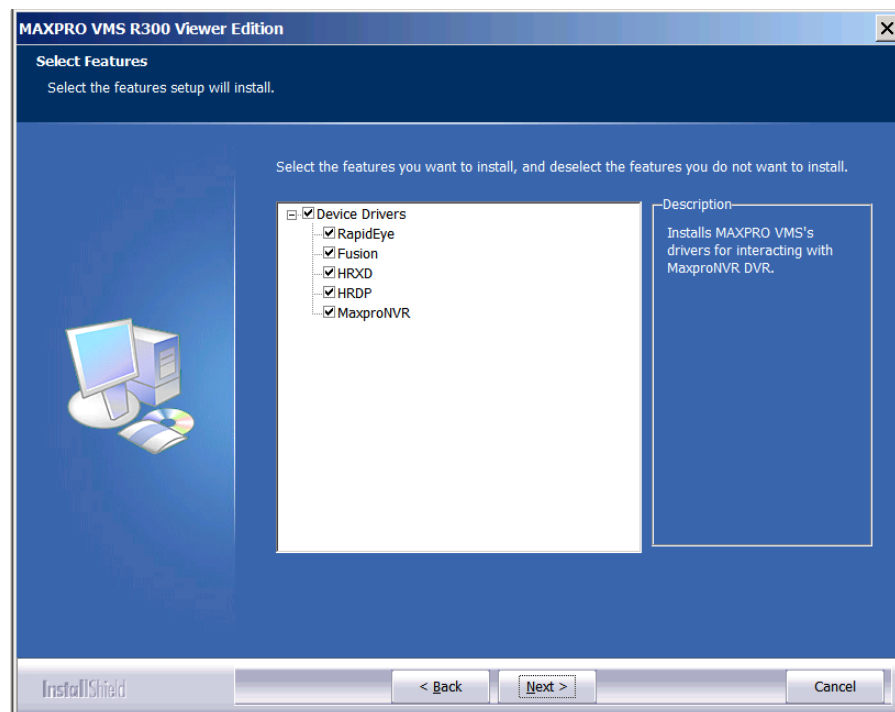


Figure 3-33 Select Features

3. Select the check boxes corresponding to the device drivers you want to install.
4. Click **Next**. The **MAXPRO VMS R300 Client Configuration** dialog box appears.

**Note:** Click to clear the check boxes corresponding to the device drivers that you do not want to install.

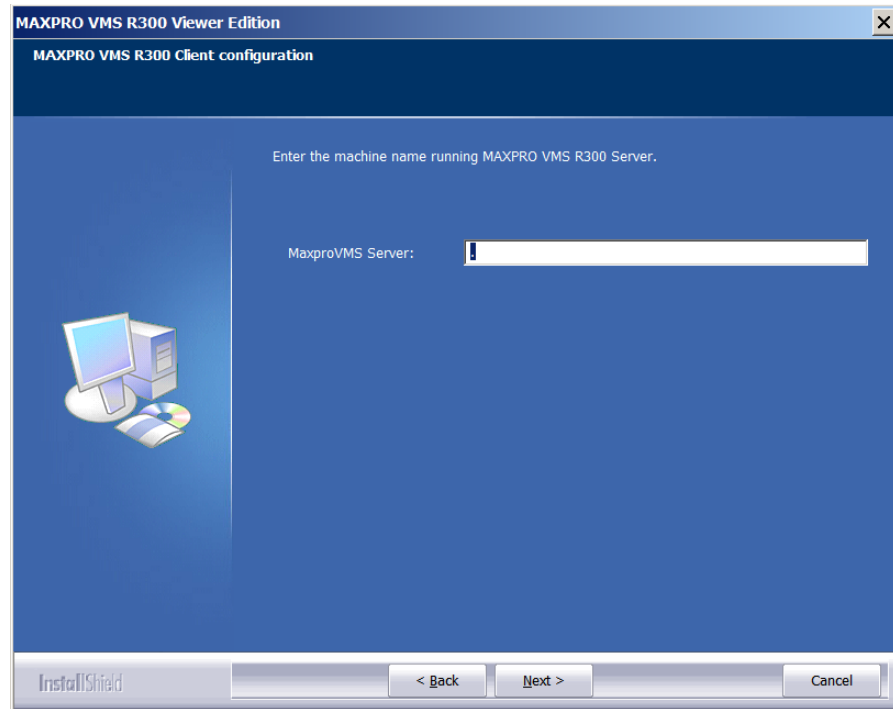


Figure 3-34 MAXPRO VMS R300 Client Configuration

5. In the **MaxproVMS Server** box, type the name of the MAXPRO VMS Server.

---

**Note:** If the MAXPRO Server server name or IP Address is not known, place a dot “.” in the box and continue. The server IP address or Name can be entered after the installation is complete.

---

6. Click **Next**. A dialog box asking for confirmation to add the client workstation to MAXPRO VMS database appears.
  - Click **Yes** if you want to add the client workstation name in MAXPRO VMS database. The **Database Server Login** dialog box appears. Go to [step 35](#).
  - Click **No** if you do not want to add client workstation name in MAXPRO VMS Server database. The **Start Copying Files** dialog box appears. Go to [step 10](#).

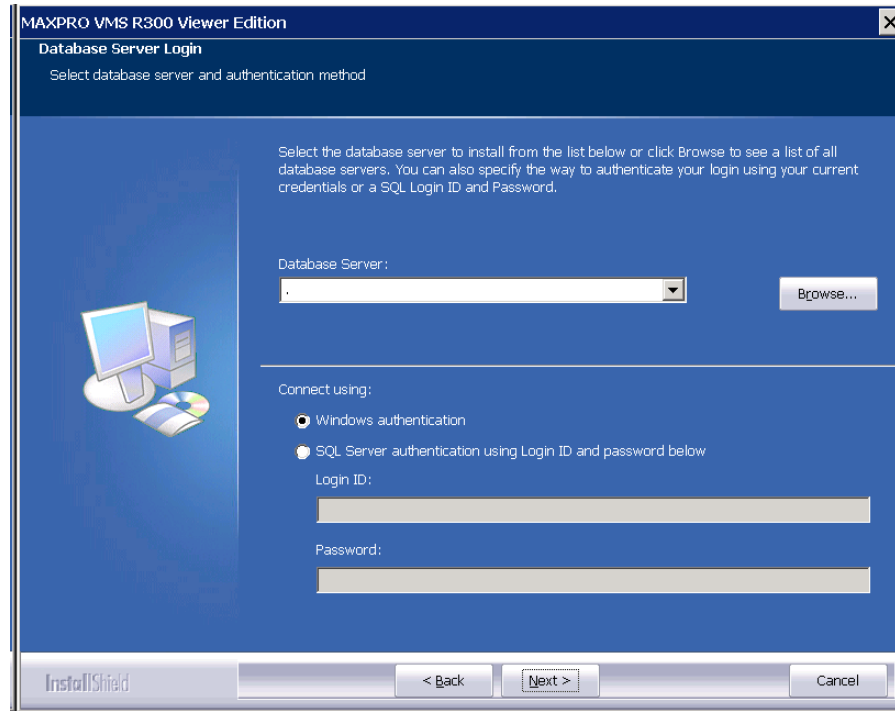


Figure 3-35 Database Server Login

7. Click **Browse**, and then select any existing SQL database. You can select the existing SQL database on the same network. If you do not want to select an existing database, proceed to step 7.
8. Select **Connect using** option as **Windows authentication** or **SQL Server authentication using Login ID and password below**.

9. Click **Next**. The **Start Copying Files** dialog box appears.

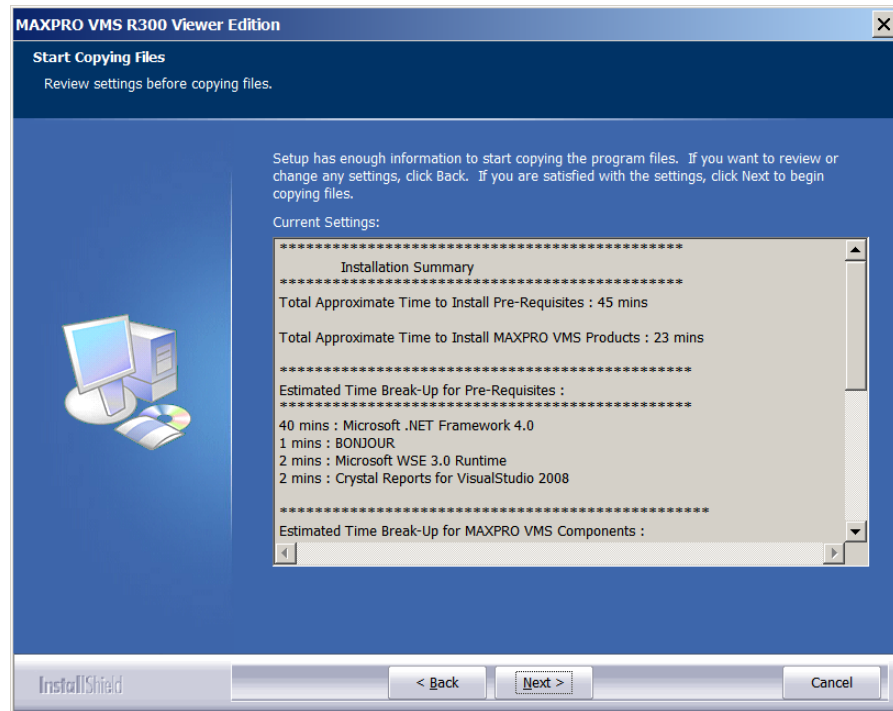


Figure 3-36 Start Copying Files

**Note:** The **Start Copying Files** dialog box lists the total approximate time for installing the prerequisites and total approximate time for installing MAXPRO VMS client components. Please note that prerequisites take more time for installation than the MAXPRO VMS components.

10. Click **Next**. The MAXPRO VMS client components are installed and the **InstallShield Wizard Complete** dialog box appears.

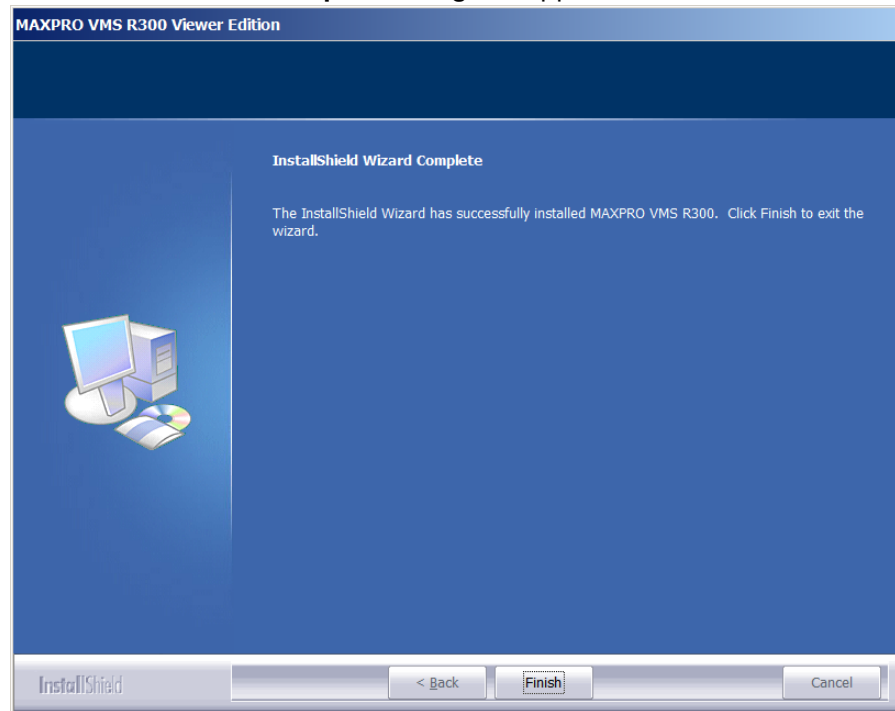


Figure 3-37 Install Shield Wizard Complete

11. Click **Finish**. Your computer restarts and the installation is complete.

## AFTER INSTALLING MAXPRO VMS R300 VIEWER EDITION

After installing the MAXPRO VMS R300 Viewer Edition, configure the Microsoft Loopback Adapter.

### To configure the Microsoft Loopback Adapter

1. Right-click **My Network Places**, and then select **Properties**.
2. Locate the LAN or High-Speed Internet connection that has a device name of Microsoft Loopback Adapter, right-click, and then select **Properties**. The **Local Area Connection Properties** dialog box appears.
3. Select **Internet Protocol (TCP/IP)**, and then click **Properties**. The **Internet Protocol (TCP/IP) Properties** dialog box appears.
4. Select **Use the following IP address**.
5. In the **IP address** box, type the IP address between the range of 10.0.0.0 to 10.255.255.255 or 192.168.0.0 to 192.168.255.255. The subnet mask 255.255.255.0 appears in the **Subnet mask** box.

**Note:** Do not set a value for **Default gateway**.

6. Click **OK**.

## REMOVING MAXPRO VMS R300

You can remove the MAXPRO VMS completely or some of its components as per your requirement.

### BEFORE YOU BEGIN

1. Stop Trinity Services.
  - a. Choose **Start>Run**, and then type **services.msc**. The **Services** window appears.
  - b. Right-click **TrinityController**, and then select **Stop**.
  - c. Right-click **TrinityServer**, and then select **Stop**.

To remove MAXPRO VMS completely

1. Insert the MAXPRO VMS R300 Viewer Edition setup DVD in the DVD drive, browse to the MAXPRO VMS R300 Viewer Edition setup folder, and then double-click **Setup.exe** or Go to the MAXPRO VMS R300 Viewer Edition setup folder in your computer, and then double-click **Setup.exe**. The **Welcome** dialog box appears.
2. Click **Next**. The **Setup Type** dialog box appears.

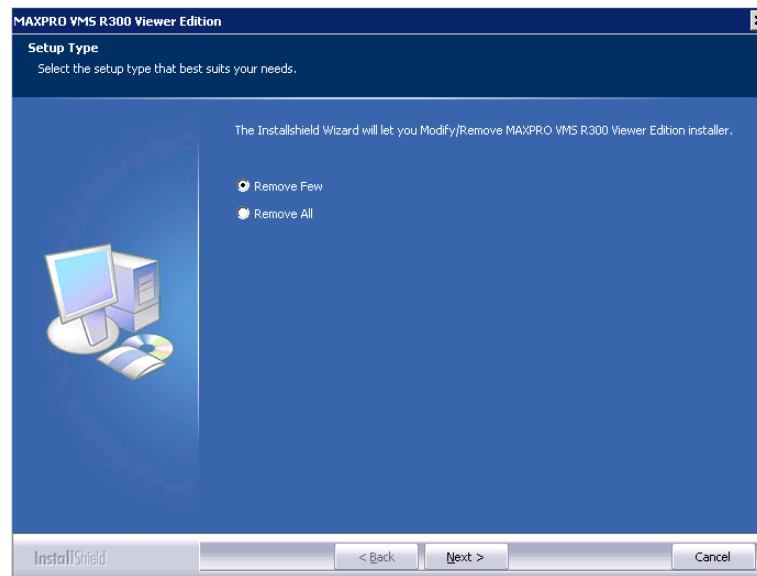


Figure 3-38 Setup Type

3. You can remove all or only few of the MAXPRO VMS components.

To remove only few components

4. Click the **Remove Few** option to remove only few of the MAXPRO VMS components. The **Select Features** dialog box appears.

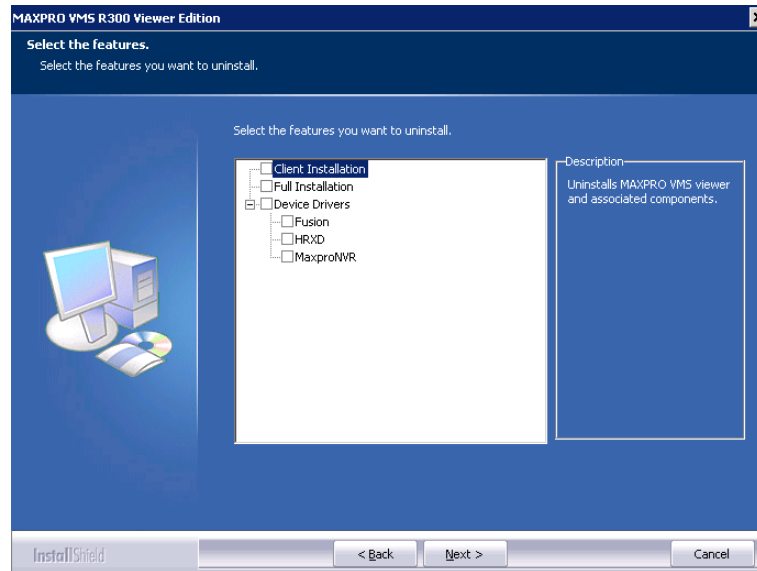


Figure 3-39 Select Features

5. Select the components that you wish to remove by clicking the respective check boxes.
6. Click **Next**. The **Start Copying Files** dialog box appears.

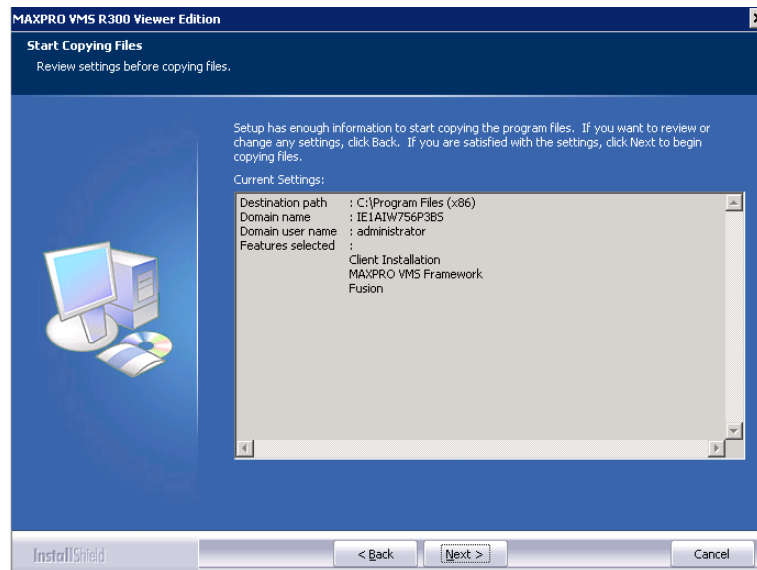


Figure 3-40 Start Copying Files

7. Click **Next**. The selected MAXPRO VMS components are removed completely and the **Uninstall Complete** dialog box appears.

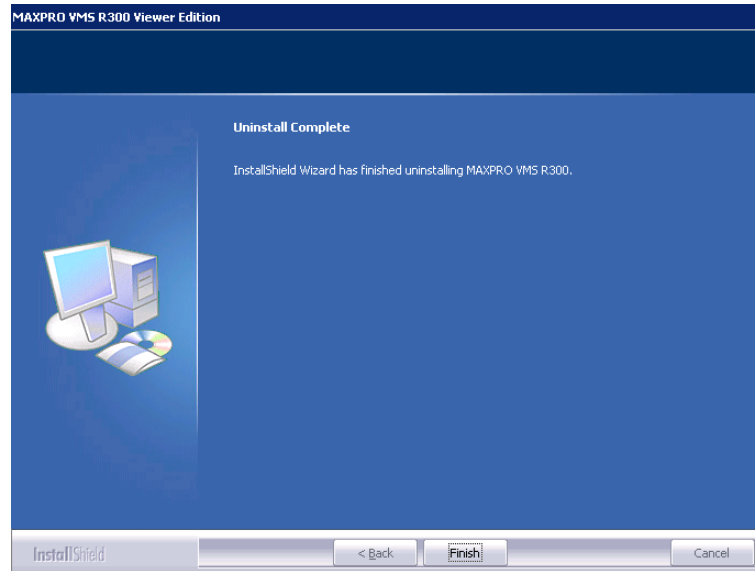


Figure 3-41 Uninstall Complete

8. Click **Finish**. You are prompted to reboot the computer.  
To remove all the MAXPRO VMS components
9. Click the **Remove All** option in the **Setup Type** dialog box to remove all the MAXPRO VMS components.
10. Click **Next**. The following confirmation message appears.

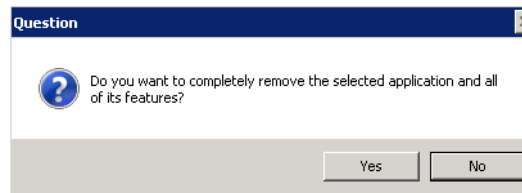


Figure 3-42 Confirmation Message

11. Click **Yes**. The **Restoring TrinityDatabase** dialog box appears.

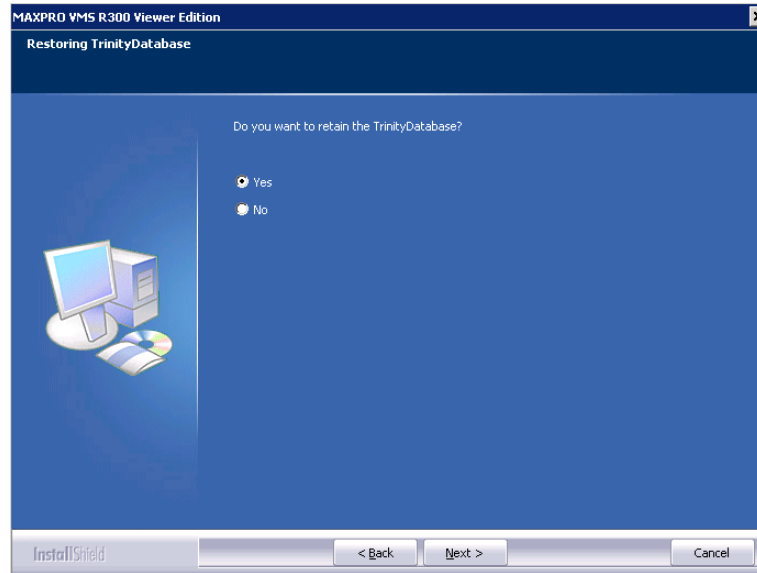


Figure 3-43 Restoring Trinity Database

12. Click **Yes** to retain the Trinity database, else click **No**.
13. Click **Next**.
14. Click **Next**. The MAXPRO VMS components are removed completely and **Uninstall Complete** dialog box appears.

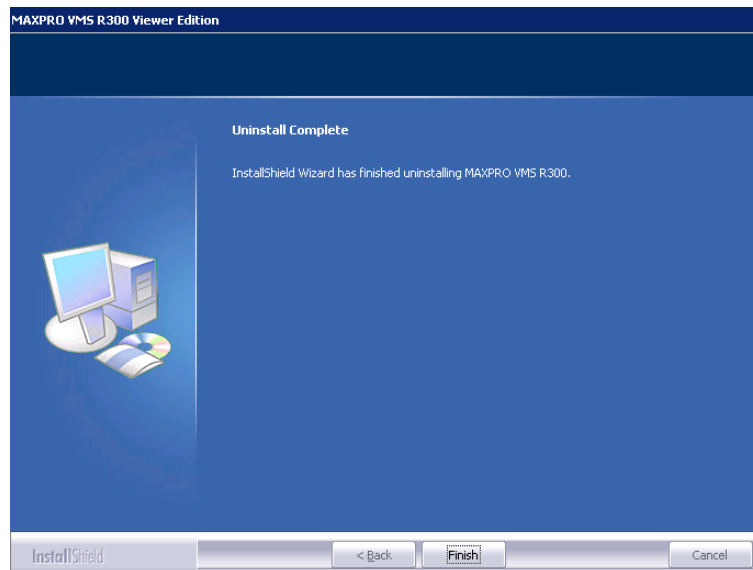


Figure 3-44 Uninstall Complete

15. Click **Finish**. You are prompted to reboot the computer.
16. Click **OK**.

**Note:** You can remove the required component using the **Add or Remove Programs** in Windows. However, Honeywell recommends to follow the above mentioned steps to remove the MAXPRO VMS components.

## AFTER REMOVING MAXPRO VMS

After removing MAXPRO VMS, remove Microsoft Loopback Adapter manually.

### To remove loopback adapter

1. Right-click **My Computer**, and then select **Properties**. The **System Properties** dialog box appears.

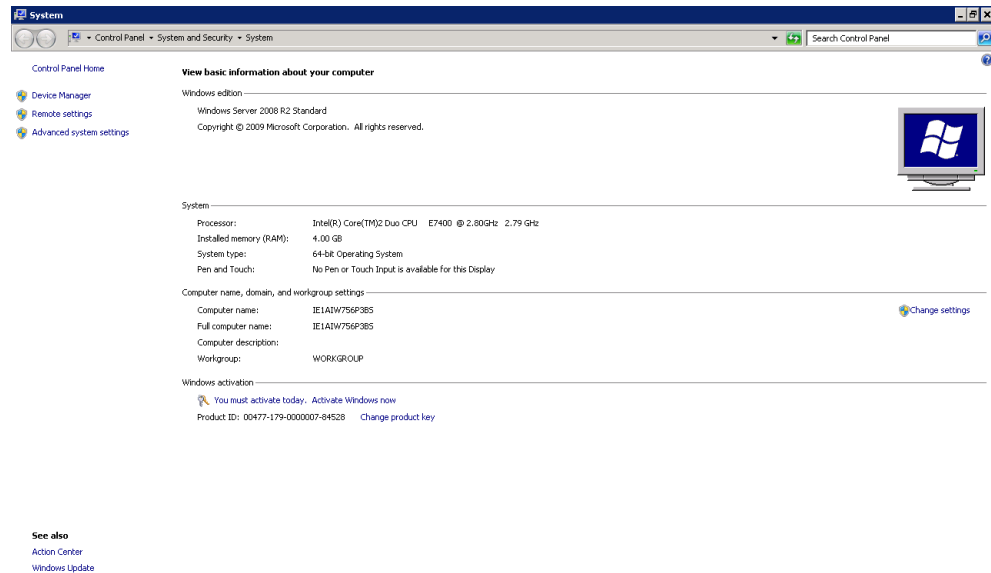


Figure 3-45 System Properties

2. Click **Device Manager**. The **Device Manager** screen appears.

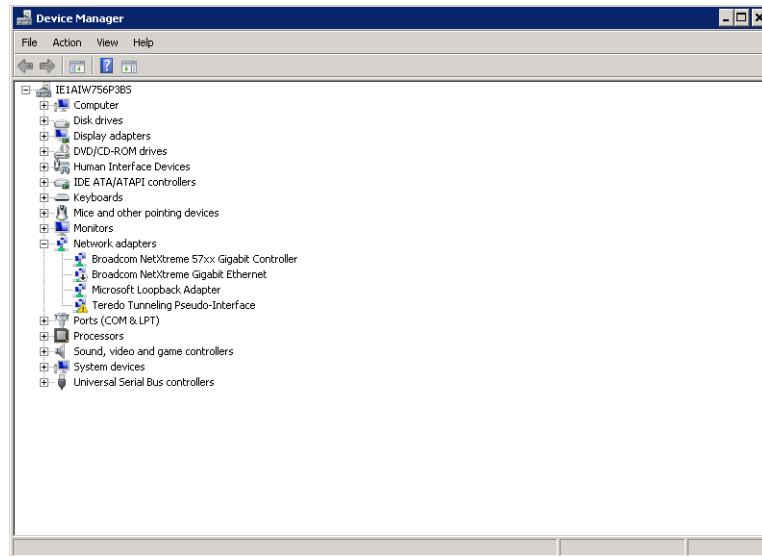


Figure 3-46 Device Manager

3. Expand the **Network Adapter** branch, right-click **Microsoft Loopback Adapter**, and then select **Uninstall**. The **Confirm Device Removal** dialog box appears.



Figure 3-47 Confirm Device Removal

4. Click **OK**.

## UPGRADING TO MAXPRO VMS R300

---

### OVERVIEW

This chapter describes the procedure for upgrading MAXPRO VMS software from VMS R300 Viewer Edition to MAXPRO VMS R300. Follow the appropriate section in this chapter to complete your MAXPRO VMS software migration.

### BEFORE YOU BEGIN

1. Ensure that the client and server computers meet the software requirements.

## UPGRADING MAXPRO VMS R300 VIEWER EDITION

See the procedures in the following sections to upgrade to MAXPRO VMS R300 Enterprise Edition.

### BEFORE YOU BEGIN

1. Stop Trinity Services.
  - a. Choose **Start>Run**, and then type **services.msc**. The **Services** window appears.
  - b. Right-click **TrinityController**, and then select **Stop**.
  - c. Right-click **TrinityServer**, and then select **Stop**.

To upgrade to MAXPRO VMS R300

1. Insert the MAXPRO VMS R300 Viewer Edition DVD in the DVD drive. The setup runs automatically. If the setup does not run automatically, browse to the setup folder on the DVD and double-click **Setup.exe**. The **Setup Type** dialog box appears.

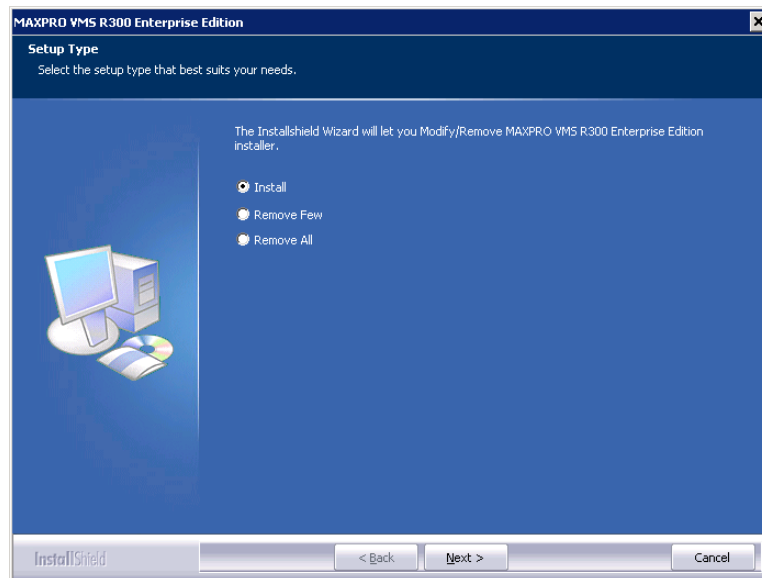


Figure 3-48 Setup Type

2. Select the **Install** option.

3. Click **Next**. The **Select Features** dialog box appears.

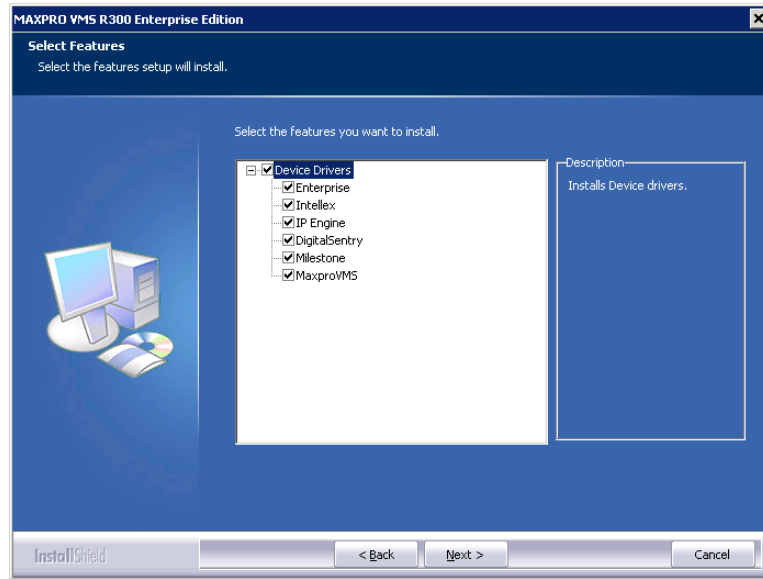


Figure 3-49 Select Features

4. Select the device drivers you want to upgrade by clicking the respective check boxes.
5. Click **Next**. The **Start Copying Files** dialog box appears.

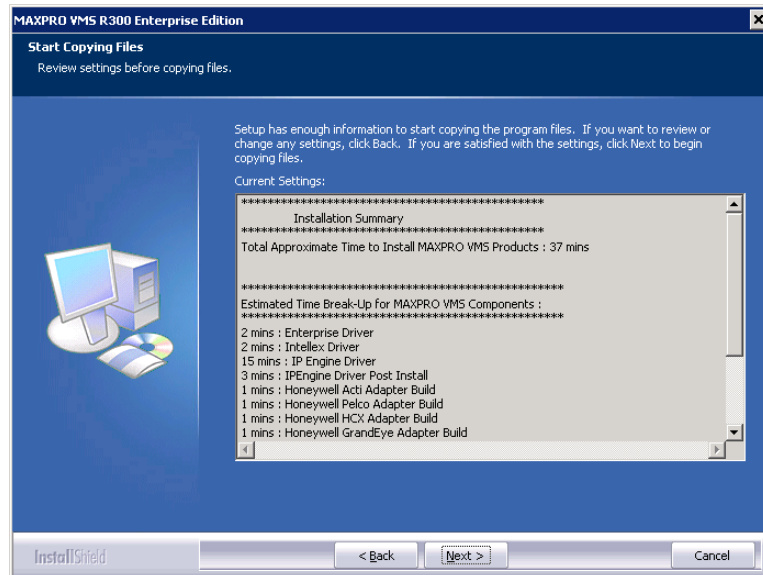


Figure 3-50 Start Copying Files

6. Click **Next**. The setup status of various components appears. The **Upgrade Complete** dialog box appears after the upgrade is successful.

# CONFIGURING MAXPRO VMS

## OVERVIEW

Configuring MAXPRO VMS involves setting up the application to perform surveillance operations. This is the most important phase for commissioning MAXPRO VMS as it involves organizing devices, users, and roles associated to them.

## ACTIVITIES TO PERFORM IN THIS PHASE

In this phase, using the MAXPRO VMS user interface perform the tasks listed in the following table.

Task	On...
Adding Profiles	<a href="#">page 53</a>
Adding Sites	<a href="#">page 54</a>
Adding Client Workstations	<a href="#">page 55</a>
Adding Users	<a href="#">page 55</a>
Adding Partitions	<a href="#">page 56</a>
Adding and configuring Recorders	<a href="#">page 57</a>
Adding and configuring Video Inputs	<a href="#">page 58</a>
Adding and configuring Relays	<a href="#">page 59</a>
Creating Sequences	<a href="#">page 61</a>
Adding Desktop Shortcuts	<a href="#">page 74</a>

## BEFORE YOU BEGIN

- Ensure that you have completed MAXPRO VMS server and client hardware setup and software installation.
- Configure the firewall settings as mentioned in the Firewall Settings section.

## FIREWALL SETTINGS

See the tables in the following sections while configuring the firewall settings for MAXPRO VMS.

### SERVER SIDE CONFIGURATION

The following server side application executable files need to be excluded with the following port configuration.

Application	Description	Port	Type	Port Number
<b>Trinity.SystemServices.exe</b>	Server Operations	TCP	Custom	20007
	Controller	TCP	Custom	26026
	DNS Server	TCP	Custom	53
<b>Trinity.Controller.exe</b>	Controller Operations	TCP	Custom	26026
<b>Scheduler</b>	Scheduler Operations	TCP	Custom	20010

## RECORDERS

	Ports	Port	Type	Port Number
<b>Programs</b>	DCOM Services	TCP	Standard	135
	File and Printer Sharing	TCP	Standard	139, 445
		TCP	Standard	137, 138
	DNS Server	TCP	Standard	53
	Client and Server Communication	TCP	Standard	80

## OTHER RECORDERS

Recorder Name	Port	Type	Port Number
<b>Fusion</b>	TCP	Custom	4000
<b>RapidEye</b>	TCP	Custom	10000
<b>HRXD</b>	TCP	Custom	8016
	TCP	Custom	10019
<b>HRDP</b>	TCP	Custom	4000
<b>MAXPRO NVR</b>	TCP	Custom	20007
	TCP	Custom	26026

## CLIENT CONFIGURATION

Application Name	Purpose	Type	Port Number
<b>MMShell.Exe</b>	Server Connection	Custom	20007
	Rendering Connection	Custom	20009
	Controller	Custom	26026
	DNS Server	Standard	53
<b>Trinity.RenderingServer.exe</b>	Client Connection	Custom	20007
	DNS Server	Standard	53

## ULTRAKEY

To avoid UltraKey device from going offline on a firewall enabled environment, please allow the following in the firewall rules.

- ICMP 'echo-request' (type 8) packets out.
- ICMP 'echo-reply' (type 0) packets in.


## CONFIGURING MAXPRO VMS R300 VIEWER EDITION

You can configure the MAXPRO VMS R300 using the **Configurator** tab in the user interface. The navigation area inside the **Configurator** tab helps configure devices, groups, and manage users and roles.

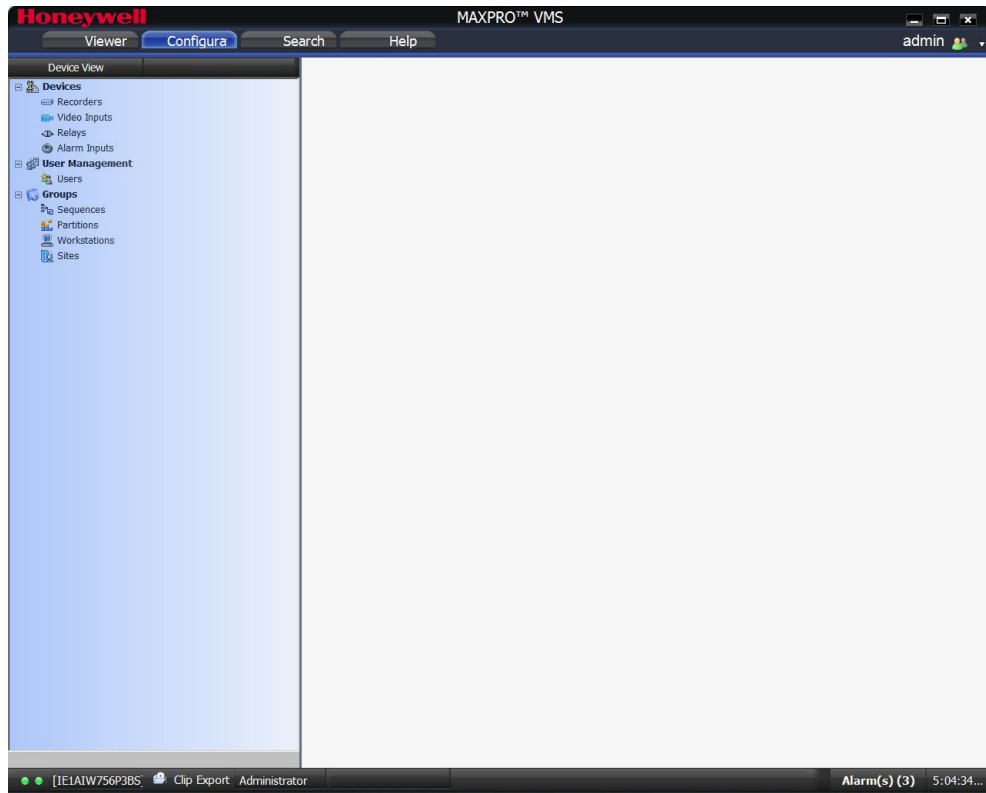
To go to configurator tab

1. Double-click the icon  on the desktop. The **Log On** dialog box appears.



2. In the **Username** box, type the user name. The default user name is “admin”.
3. In the **Password** box, type the password. The default password for the default user name “admin” is “trinity”.
4. Click  . The **Viewer** tab appears by default.


5. Click **Configurator** tab. The **Configurator** screen appears.



## ADDING PROFILE

Server addresses are saved in profiles. You need a profile to log on to MAXPRO VMS. You can add, modify, and delete a profile through the log on dialog box.

### To add, modify or delete a profile

1. Double-click the icon  on the desktop. The **Log On** dialog box appears.
2. Click **Server Settings**. The **Server Settings** dialog box appears.
3. You can add, delete or modify a profile using the **Server Settings** dialog box.

---

**Note:** For more information on how to add profiles, refer to the [MAXPRO VMS R300 Viewer Edition Help](#).

---

## ADDING SITES

---

A site is added to associate cameras, recorders, switchers, and monitor. By default, one site is available in MAXPRO VMS R300 Viewer Edition. If only one site is needed at the location, you can use the default site. Any number of sites can be added as per your requirements.

### To add a site

1. Go to **Configurator** tab.
2. Expand the **Groups** branch in the navigation area, and then click **Sites**.

---

**Note:** For more information on how to add sites, refer to the [MAXPRO VMS R300 Viewer Edition Help](#).

---

## ADDING USERS

---

By default, user named “admin” is created with administrator role. This user is privileged to add new users, assign roles to them, and associate them to partitions, event groups, workstations, and joystick controllers. You can restrict a user from viewing and modifying the settings of video devices. You can also dissociate privileges to a user.

### To add a user

1. Go to **Configurator** tab.
2. Expand the **User Management** branch in the navigation area, and then click **Users**.

---

**Note:** For more information on how to add users, refer to the [MAXPRO VMS R300 Viewer Edition Help](#).

---

## ADDING PARTITIONS

---

Devices and users are associated to partitions. Only users associated to a partition can use the devices in that partition. By default, a partition is created and all the devices and users are associated with it. You can create any number of partitions based on the requirements.

You can associate devices and users to a partition while you are adding them. You can also dissociate the partition from devices and users.

### To add a partition

1. Go to **Configurator** tab.
2. Expand the **Groups** branch in the navigation area, and then click **Partitions**.

---

**Note:** For more information on how to add partitions, refer to the [MAXPRO VMS R300 Viewer Edition Help](#).

---

## ADDING AND CONFIGURING THE RECORDERS

You can add a recorder and modify the settings as per your requirements. You can also select the site for the recorder, and associate partitions and events.

### To add and configure a recorder

1. Go to **Configurator** tab.
2. Expand the **Devices** branch in the navigation area, and then click **Recorders**.

---

**Note:** For more information on how to add and configure recorders, refer to the [MAXPRO VMS R300 Viewer Edition Help](#).

---

## ADDING AND CONFIGURING VIDEO INPUTS

---

You can add and configure both digital and analog cameras in MAXPRO VMS. Recorders are associated with the cameras. Cameras can be associated to partitions for logical grouping.

### To add and configure cameras

1. Go to **Configurator** tab.
2. Expand the **Devices** branch in the navigation area, and then click **Video Inputs**.

---

**Note:** For more information on how to add and configure cameras, refer to the [MAXPRO VMS R300 Viewer Edition Help](#).

---

## ADDING AND CONFIGURING RELAYS

You can add or delete a relay in MAXPRO VMS R300 Viewer Edition. Relays can be connected to devices like recorders, cameras. Relays send signals that perform various actions. For example, you can set a relay to open the door automatically when a motion is detected in a particular region.

### To add and configure relays

1. Go to **Configurator** tab.
2. Expand the **Devices** branch in the navigation area, and then click **Relays**.

**Note:** For more information on how to add and configure relays, refer to the [MAXPRO VMS R300 Viewer Edition Help](#).

## ADDING AND CONNECTING ALARM INPUTS

---

You can add alarm inputs to raise alarms through an external device in MAXPRO VMS.

### To add alarm inputs

1. Go to **Configurator** tab.
2. Expand the **Devices** branch in the navigation area, and then click **Alarm Inputs**.

---

**Note:** For more information on how to add alarm inputs, refer to the [MAXPRO VMS R300 Viewer Edition Help](#).

---

## CREATING SEQUENCES

---

After you have configured all the devices and users, you have the option of creating sequences. Sequences display live video from the cameras or presets for a specified time interval. You can select the cameras or presets to be included in a sequence and also specify the time interval for which the video from each camera or preset is displayed.

### To create sequences

1. Go to **Configurator** tab.
2. Expand the **Groups** branch in the navigation area, and then click **Sequences**.

---

**Note:** For more information on how to create sequences, refer to the [MAXPRO VMS R300 Viewer Edition Help](#).

---

This page is intentionally left blank

# VERIFYING THE CONFIGURATION OF MAXPRO VMS R300 VIEWER EDITION

## OVERVIEW

Verifying the configuration of the MAXPRO VMS R300 Viewer Edition is the final phase in the commissioning process. In this phase, you need to verify the working of the MAXPRO VMS R300 Viewer Edition.

## BEFORE YOU BEGIN

Ensure that the configuration of the MAXPRO VMS R300 Viewer Edition is complete.

## ACTIVITIES TO PERFORM IN THIS PHASE

In this phase, using the MAXPRO VMS user interface, perform the following tasks to verify the configuration.

Task	On...
Connection with the MAXPRO VMS server (logging on)	<a href="#">page 64</a>
Device listing in the Devices window	<a href="#">page 65</a>
Live video display from cameras	<a href="#">page 66</a>
Playback of recorded video	<a href="#">page 67</a>
Playback of loop (mark in and mark out feature) in Timeline window	<a href="#">page 68</a>
Panning, tilting, and zooming functions (analog PTZ and Digital PTZ)	<a href="#">page 69</a>
Acknowledgement of alarms and clearing of alarms	<a href="#">page 70</a>
Image creation	<a href="#">page 72</a>
Clip creation	<a href="#">page 73</a>
Saving the salvo layout using the salvo view feature	<a href="#">page 84</a>
Device listing in My Devices window	<a href="#">page 74</a>

## CHECKING THE CONNECTION WITH MAXPRO VMS SERVER

The MAXPRO VMS can consist of one or more servers. You can save the address of each server in profiles from the **Log On** dialog box that appears when you start MAXPRO VMS. The **Log On** dialog box is illustrated in the following figure.


**To connect to a MAXPRO VMS R300 Viewer Edition server from the client computer**

1. Click the language selection option, and then select the required language from the drop-down list. The supported languages are Chinese, German, French, and Arabic. The default language is English.

---

**Note:** You can localize the language using the localization tool. For more details, refer to the [MAXPRO VMS R300 Viewer Edition Localization Guide.pdf](#) which is available on the DVD.

---

2. In the **Username** box, type the user name. The default user name is “admin”.
3. In the **Password** box, type the password. The default password for the default user name “admin” is “trinity”.
4. In the **Profile** box, select the profile in which the server address is saved.
5. Click . The **MAXPRO VMS** dialog box is displayed.

You can set a profile as the default profile. When a profile is set as default, you need not select the profile each time you log on to MAXPRO VMS R300 Viewer Edition. You can also modify and delete profiles.

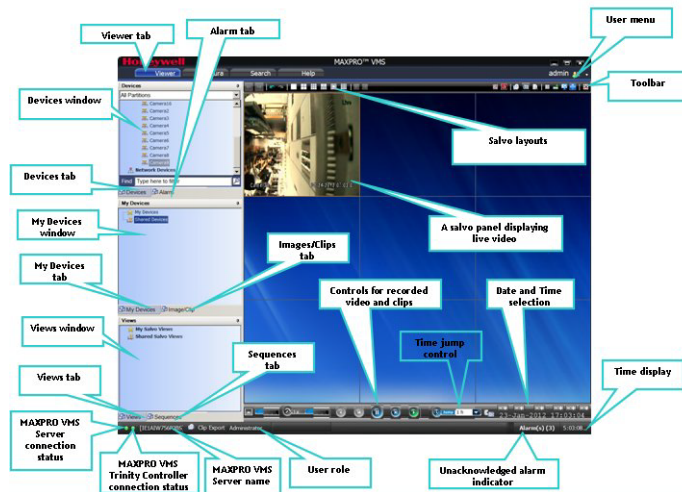
---

**Note:** Refer to the [MAXPRO VMS R300 Viewer Edition Help](#) for more information on how to save server addresses in profiles, how to set a profile as default profile, and how to modify and delete profiles.

---

## CHECKING THE DEVICE LISTING IN THE DEVICES WINDOW

By default, the **Viewer** tab is selected when you log on to MAXPRO VMS R300 Viewer Edition. The **Devices** window lists the recorders, along with the cameras connected to them in a tree structure. Similarly sequences are listed in the **Sequences** window, salvo views are listed in the **Views** window. A drop-down box on the top of the **Devices** window lists the partitions. The following figure illustrates the **Viewer** tab and the various windows.



Ensure that all the devices, sequences, and salvo views added to the MAXPRO VMS R300 Viewer Edition are listed in the respective windows.

**Note:** Refer to the [MAXPRO VMS R300 Viewer Edition Help](#) for more information.

---

## CHECKING THE LIVE VIDEO FROM CAMERAS

---

To ensure that all the cameras are connected and functioning properly, you need to check for live video from them.

### To select the cameras and view live video

- Double-click the camera in the **Devices** window or **My Devices** window. You can also drag the camera on a panel in the salvo layout. The panel starts displaying live video and the label **Live** appears over the video display.

The camera can also be selected using the virtual keyboard and joystick controller. You can select multiple cameras and view live video in different panels of the salvo layout.

---

**Note:** Refer to the [MAXPRO VMS R300 Viewer Edition Help](#) for more information on how to view live video from cameras.

---

## CHECKING THE PLAYBACK OF RECORDED VIDEO

To playback video, the recording from the camera must be available and the recording settings for the camera must be configured. You can find out the status of the camera by the colored indicator on the camera icon in the site view. If the indicator on the camera icon is green means the camera is active. If the indicator on the camera is red means it is recording.

Recorded video can be played from the **Timeline** window. When you select a camera to view video, a timeline corresponding to the camera appears in the Timeline window. The name of the camera appears on the left of the timeline.

To play recorded video from a camera, you can click the timeline at the point from which you want to play video. A timescale is displayed in the lower part of the **Timeline** window. You can refer to the divisions in the timescale to locate the date and time. You can also select a date and time from which you want to play recorded video using the date and time options in the timeline window.

Color codes are used in the timeline to indicate the availability of video recording for the cameras connected to the IP engine. The time duration for which recording is available is indicated in green color. The time duration for which recording is not available is indicated in white color.

For cameras connected to other recorders such as Rapid Eye, Fusion, Enterprise and Intellex, the color codes are not displayed in the timeline. However, you can click a point in the timeline to play recorded video.

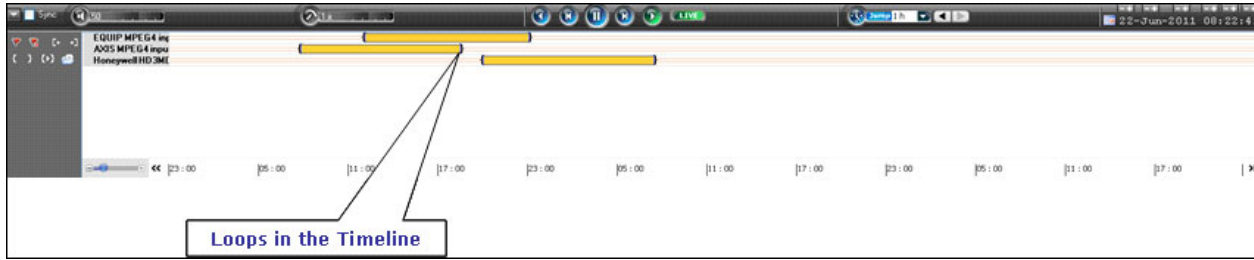
The label **Rec** is displayed in red color on the panel displaying recorded video from a camera.

**Note:** For more information on how to play recorded video from the Timeline window and how to use the player controls, refer to the [MAXPRO VMS R300 Viewer Edition Help](#).

## CHECKING THE PLAYBACK LOOP IN THE TIMELINE WINDOW

Loops are used for repeatedly playing a portion of video. Mark in and mark out points are used to create a loop in the **Timeline** window. You can add a mark in point to mark the start date and time of the loop in the timeline. To mark the end date and time of the loop, add a mark out point in the timeline. The following figure illustrates a loop in the timeline.

### Figure 0-1 Loop in the timeline



**Note:** For more information on how to create loops by adding mark in and mark out points and how to play a loop, refer to the [MAXPRO VMS R300 Viewer Edition Help](#).

## CHECKING THE PANNING, TILTING, AND ZOOMING

In MAXPRO VMS R300 Viewer Edition, you can perform two types of PTZ namely, analog PTZ and Digital PTZ. Using the digital PTZ feature, you can perform panning and tilting on live and recorded video and clips. The digital PTZ feature when enabled allows you to perform panning and tilting on the video display that is zoomed or enlarged in a panel.

You need to perform both analog and digital PTZ on cameras to verify the functioning.

---

**Note:** For more information on how to perform analog and digital PTZ, refer to the [MAXPRO VMS R300 Viewer Edition Help](#).

---

## CHECKING THE ACKNOWLEDGEMENT AND CLEARING OF ALARMS

Alarms notify the occurrence of events and event attributes to the operators. You can configure alarms to be triggered when events such as recorder disk space nearing full, motion detection, and others happen. The event attributes that are associated to events are listed in the details of the alarm in **Alarm** window. The events that trigger an alarm can be selected while configuring the recorders, cameras, and switchers. Events can be associated to event groups.

Each alarm goes through the following states.

### New or Unacknowledged

When an alarm is triggered it appears in the Alarm window. You can click the **Alarm** tab to view the **Alarm** window. The state of the alarm after it is triggered is referred to as unacknowledged. You can view the list of all the unacknowledged alarms in a table in the **Alarm** window. The following figure illustrates the **Alarm** window.

The number of unacknowledged alarms is displayed in a blinking mode in the status bar in red color. For example, **Alarms (10)** indicate that there are ten unacknowledged alarms. You can select various options using the context menu or shortcut menu by right clicking on the **Alarms** window. The options include:

- Acknowledge (ACK)
- Clear on ACK
- Show Video
- Show Preview Pane
- Freeze
- Receive Alarms Only
- Receive Events Only
- Receive both Alarms and Events

### Acknowledge

An acknowledged alarm indicates that the operator has taken the action. After acknowledging the alarm, it is moved to the acknowledged alarms list in the Alarm window. You can also use the Acknowledge button below Alarms window. To clear acknowledged alarms, use the Clear button below Acknowledged list window.

### Clear on ACK

This option clears the alarms which are acknowledged.

### Show Video

Select this option if you want to view video from which the alarm was generated.

### Show Preview Pane

This option gives you four windows which display alarms which are on, pre-alarm, post alarm, and live alarm videos.

### Freeze

Select this option if you no longer wish to receive alarms.

### Receive Alarms Only

Select this option if you want to receive only alarms.

### Receive Events Only

Select this option if you want to receive only Events.

**Receive both Alarms and Events**

Select this option receive both alarms and events.

---

**Note:** For more information on how to acknowledge and clear alarms, refer to the [MAXPRO VMS R300 Viewer Edition Help](#).

---

## CHECKING THE CREATION OF IMAGES

---

A frame of video displayed in the panel can be saved as an image. The image can be saved in Bitmapmed Graphics (BMP), Joint Photographic Experts Group (JPG) format, Portable Graphics format (PNG), and Graphics Interchange Format (GIF).

Only the images saved in the **ImagesAndClips** folder at the location in the hard drive in which MAXPRO VMS R300 files are installed can be viewed in the Image/Clip window. You can double-click the image view option in the Image/Clip window to view images on the salvo layout. You can also select the image size large, medium, and small as per the requirement.

For example, **X:\ProgramFiles\Honeywell\TrinityFramework\ImagesAndClips**. Here, X: is the disk drive.

The images can also be saved in other folders on the computer.

---

**Note:** For more information on how to save and view images, refer to the ***MAXPRO VMS R300 Viewer Edition Help***.

---

## CHECKING THE CREATION OF CLIPS

Clips can be created from recorded video and saved in MP4, MPG, AVI, and WMV format depending on the format supported by the recorders. Only the clips saved in the ImagesAndClips folder at the location in the hard drive in which MAXPRO VMS R300 files are installed can be viewed in the **Image/ Clip** window.

For example, **X:\ProgramFiles\Honeywell\TrinityFramework\ImagesAndClips**. Here, X: is the hard drive.

The clips can also be saved in other folders on the computer.

The clips can be saved with digital signatures. Digital signatures ensure authenticity of clips. Digital signatures are primarily used to authenticate videos that are produced in courts as evidence. A digital signature generates a unique string for the clip using algorithms recommended by the World Wide Web Consortium (W3C) standards. If the video in the clip is modified, a verification check for the unique string fails indicating that the content is tampered. When a clip is saved with the digital signature, a package file with the.PKG extension is created to save the clip.

---

**Note:** For more information on how to save and view images, refer to the [MAXPRO VMS R300 Viewer Edition Help](#).

---

A salvo layout that is customized based on the preferences of the operators is referred to as a salvo view. Cameras and sequences that are selected frequently and the preferred salvo layout can be saved as a salvo view. The saved salvo views appear in the Views window.

---

## CHECKING THE DEVICE LISTING IN MY DEVICES WINDOW

---

In the **My Devices** window, operators can group the video sources, which are frequently selected such as cameras, monitors, and sequences. If you group the video sources, it is easy to select and you need not search in the **Devices** window, which generally consists of many video sources. You can also group the devices under shared devices. Devices grouped under shared devices are displayed on all client workstations irrespective of the logged in user.

---

**Note:** For more information on how to add a video source to **My Devices** window and how to create folders to group them, refer to the [MAXPRO VMS R300 Viewer Edition Help](#).

---



**Honeywell Video Systems (Head Office)**

2700 Blankenbaker Pkwy, Suite 150  
Louisville, KY 40299, USA  
[www.honeywellvideo.com](http://www.honeywellvideo.com)  
☎ +1.800.796.2288

**Honeywell Security Australia Pty Ltd.**

Unit 5, Riverside Centre, 24-28 River Road West  
Parramatta, NSW 2150, Australia  
[www.honeywellsecurity.com/au](http://www.honeywellsecurity.com/au)  
☎ +61.2.8837.9300

**Honeywell Security Asia Pacific**

33/F Tower A, City Center, 100 Zun Yi Road  
Shanghai 200051, China  
[www.asia.security.honeywell.com](http://www.asia.security.honeywell.com)  
☎ +86 21.2527.4568

**Honeywell Security Asia**

Flat A, 16/F, CDW Building, 388 Castle Peak Road  
Tsuen Wan, N.T., Hong Kong  
[www.asia.security.honeywell.com](http://www.asia.security.honeywell.com)  
☎ +852.2405.2323

**Honeywell Security France**

Parc Gutenberg, 8, Voie La Cardon  
91120, Palaiseau, France  
[www.honeywell.com/security/fr](http://www.honeywell.com/security/fr)  
☎ +33.01.64.53.80.40

**Honeywell Security Italia SpA**

Via Treviso 2 / 4  
31020 San Vendemiano  
Treviso, Italy  
[www.honeywell.com/security/it](http://www.honeywell.com/security/it)  
☎ +39.04.38.36.51

**Honeywell Security España**

Mijancas 1. 3ª Planta  
P.Ind. Las Mercedes  
28022 Madrid, Spain  
[www.honeywell.com/security/es](http://www.honeywell.com/security/es)  
☎ +34.902. 667.800

**Honeywell Video Systems Northern Europe**

Network 121  
1446 WV Purmerend, The Netherlands  
[www.honeywell.com/security/nl](http://www.honeywell.com/security/nl)  
☎ +31.299.410.200

**Honeywell Systems Group**

Aston Fields Road, Whitehouse Ind Est  
Runcorn, Cheshire, WA7 3DL, UK  
[www.honeywell.com/security/uk](http://www.honeywell.com/security/uk)  
☎ +44 (0)1928 756999

**Honeywell Security South Africa**

Unit 6 Galaxy Park, 17 Galaxy Avenue  
Linbro Park, P.O. Box 59904  
2100 Kengray, Johannesburg, South Africa  
[www.honeywell.co.za](http://www.honeywell.co.za)  
☎ +27.11.574.2500

**Honeywell Security Deutschland**

Johannes-Mauthe-Straße 14  
D-72458 Albstadt, Germany  
[www.security.honeywell.com/de](http://www.security.honeywell.com/de)  
☎ +49.74 31.8 01.0

**Honeywell Security Poland**

Chmielewskiego 22a, 70-028  
Szczecin, Polska  
[www.ultrak.pl](http://www.ultrak.pl)  
☎ +48.91.485.40.60

**Honeywell Security Czech Republic**

Havránková 33, Brno  
Dolní Heršpice, 619 00, Czech Republic  
[www.olympo.cz](http://www.olympo.cz)  
☎ +420.543.558.111

**Honeywell Security Slovakia Republic**

Vajnorská 142, 83104 Bratislava  
Slovakia  
[www.olympo.sk](http://www.olympo.sk)  
☎ +421.2.444.54.660

# Honeywell

[www.honeywellvideo.com](http://www.honeywellvideo.com)  
[HVSsupport@honeywell.com](mailto:HVSsupport@honeywell.com)

Document 800-11111 – Rev A – 1/2012

© 2012 Honeywell International Inc. All rights reserved. No part of this publication may be reproduced by any means without written permission from Honeywell Video Systems. The information in this publication is believed to be accurate in all respects. However, Honeywell Video Systems cannot assume responsibility for any consequences resulting from the use thereof. The information contained herein is subject to change without notice. Revisions or new editions to this publication may be issued to incorporate such changes.