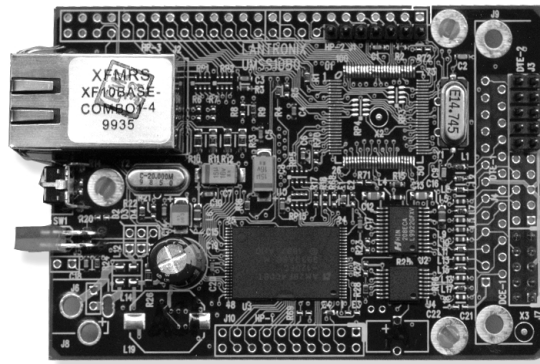


---

**PW-5000**  
**Ethernet Board**  
**Installation Manual**  
Part Number: PW5K1EN





## **Contents**

Warnings and Cautions . . . . .	.5
Disclaimer . . . . .	.7
Unpacking Procedure . . . . .	.7
Shipping Instructions . . . . .	.8
Limited Warranty . . . . .	.8
Confidentiality . . . . .	.9
Programming Ethernet Devices . . . . .	.10
PW5K1EN Diagram . . . . .	.13



## WARNINGS AND CAUTIONS

### WARNING



Before installation, turn off the external circuit breaker which supplies power to the system.

Before connecting the device to the power supply, verify that the output voltage is within specifications of the power supply.

Do not apply power to the system until after the installation has been completed.

Personal injury or death could occur, and the equipment could be damaged beyond repair, if this precaution is not observed!

### WARNING



#### Fire Safety and Liability Notice

Never connect card readers to any critical entry, exit door, barrier, elevator or gate without providing an alternative exit in accordance with all fire and life safety codes pertinent to the installation. These fire and safety codes vary from city to city and you must get approval from local fire officials whenever using an electronic product to control a door or other barrier. Use of egress buttons, for example, may be illegal in some cities. In most applications, single action exit without prior knowledge of what to do is a life safety requirement. Always make certain that any required approvals are obtained in writing. **DO NOT ACCEPT VERBAL APPROVALS, AS THEY ARE NOT VALID.**

Nexwatch never recommends using the N-1000, N-800, N-500, PW-2000, PW-5000,

EV-2000 or related products for use as a primary warning or monitoring system. Primary warning or monitoring systems should always meet local fire and safety code requirements. The installer must also test the system on a regular basis by instructing the end user in appropriate daily testing procedures. Failure to test a system regularly could make installer liable for damages to the end user if a problem occurs.

### WARNING



**EARTH** ground all enclosures, for proper installation.

**WARNING**

Use suppressors on all door strikes. Use S-4 suppressors for installation. NexWatch recommends only DC strikes.

**CAUTION**

IF ANY DAMAGE TO THE SHIPMENT IS NOTICED, A CLAIM MUST BE FILED WITH THE COMMERCIAL CARRIER RESPONSIBLE.

**CAUTION**

Electro-static discharge can damage CMOS integrated circuits and modules.

To prevent damage always follow these procedures:

Use static shield packaging and containers to transport all electronic components, including completed reader assemblies.

Handle all ESD sensitive components at an approved static controlled workstation. These workstations consist of a desk mat, floor mat and an ESD wrist strap. Workstations are available from various vendors.

**NOTICE**

This equipment has been tested and found to comply with the limits for a Class A digital device, pursuant to part 15 of the FCC Rules. These limits are designed to provide reasonable protection against harmful interference when the equipment is operated in a commercial environment. This equipment generates, uses, and can radiate radio frequency energy and, if not installed and used in accordance with the instruction manual, may cause harmful interference to radio communications. Operation of this equipment in a residential area is likely to cause harmful interference in which case the user will be required to correct the interference at his own expense.

**NOTICE**

This document and the data in it shall not be duplicated, used or disclosed to others for procurement or manufacture, except as authorized by and with the written permission of, NexWatch, Inc. The information contained in this document or in the product itself is considered the exclusive property and trade secrets of NexWatch, Inc. Copyright laws of the United States protect all information in this document or in the software product itself.

**NOTICE**

Any use of this product is subject to the terms and acceptance of the NexWatch, Inc. Software Agreement. Please request a copy from NexWatch, Inc., and review the agreement carefully.

**DISCLAIMER****Product Liability; Mutual Indemnification**

In the event that a Customer receives a claim that a Product or any component thereof has caused personal injury or damage to property of others, Customer shall immediately notify Nexwatch in writing of all such claims. Nexwatch shall defend or settle such claims and shall indemnify and hold Customer harmless for any costs or damages including reasonable attorneys' fees which Customer may be required to pay as a result of the defective Product or the negligence of Nexwatch, its agents, or its employees.

Customer shall hold harmless and indemnify Nexwatch from and against all claims, demands, losses and liability arising out of damage to property or injury to persons occasioned by or in connection with the acts or omissions of Customer and its agents and employees, and from and against all claims, demands, losses and liability for costs of fees, including reasonable attorneys' fees, in connection therewith.

**UNPACKING PROCEDURE****CAUTION**

If any damage to the shipment is noticed before unpacking, a claim must be filed with the commercial carrier.

All containers should be opened and unpacked carefully in order to prevent damage to the contents.

The following steps are used to unpack equipment in preparation for installation:

1. Open the container and remove the unit(s) and all packing material. Retain the container and all packing materials. They may be used again for reshipment of the equipment, if needed.
2. Inspect the contents for shortage. If items are missing items, contact the order entry department at 800-227-1667 Option\_2.

3. Visually check contents. If damage is discovered, perform the following:

If shipping caused damage to the unit, a claim must be filed with the commercial carrier.

If any other defect is apparent, call for a return authorization.

## Shipping Instructions

To ship equipment back to NexWatch, Inc.:

1. Contact the customer service department at 800-227-1667 Option\_2 before returning equipment. When you call please have available:
  - A description of the problem or reason you are returning the equipment.
  - Your original purchase order number, invoice number and if the unit is still under warranty.
  - A new purchase order number if the unit is not under warranty
2. Obtain the Return Authorization Number (RMA) from the customer service department.
3. Show the RMA number on all packages shipped. Packages, which are not marked with an RMA number will be refused at the factory and returned to you COD.
4. Carefully pack the equipment for shipment. Use the original packing material whenever possible

## Limited Warranty

All Products sold or licensed by Nexwatch include a warranty registration card which must be completed and returned to Nexwatch by or on behalf of the end user in order for Nexwatch to provide warranty service, repair, credit or exchange. All warranty work shall be handled through Customer which shall notify Nexwatch and apply for a Return Merchandise Authorization (RMA) number prior to returning any Product for service, repair, credit or exchange. Nexwatch warrants that its Products shall be free from defects in materials and workmanship for a period of two years from date of shipment of the Product to Customer. The warranty on Terminals, Printers, Communications Products and Upgrade kits is 90 days from date of shipment. Satisfaction of this warranty shall be limited to repair or replacement of Products which are defective or defective under normal use. Nexwatch's warranty shall not extend to any Product which, upon examination,



is determined to be defective as a result of misuse, improper storage, incorrect installation, operation or maintenance, alteration, modification, accident or unusual deterioration of the Product due to physical environments in excess of the limits set forth in Product manuals. THERE ARE NO WARRANTIES WHICH EXTEND BEYOND THIS PROVISION. THIS WARRANTY IS IN LIEU OF ALL OTHER WARRANTIES WHETHER EXPRESS, IMPLIED OR STATUTORY, INCLUDING IMPLIED WARRANTIES OF MERCHANTABILITY OR FITNESS FOR ANY PARTICULAR PURPOSE. NO REPRESENTATION OR WARRANTY OF THE DISTRIBUTOR SHALL EXTEND THE LIABILITY OR RESPONSIBILITY OF THE MANUFACTURER BEYOND THE TERMS OF THIS PROVISION. IN NO EVENT SHALL NEXWATCH BE LIABLE FOR ANY RE-PROCUREMENT COSTS, LOSS OF PROFITS, LOSS OF USE, INCIDENTAL, CONSEQUENTIAL OR SPECIAL DAMAGES TO ANY PERSON RESULTING FROM THE USE OF NEXWATCH'S PRODUCTS.

### **Confidentiality**

All software, drawings, diagrams, specifications, catalogs, literature, manuals and other materials furnished by Nexwatch relating to the design, use and service of the Products shall remain confidential and shall constitute proprietary rights of Nexwatch and Customer agrees to treat such information as confidential. Customer shall acquire no rights in the design of the Products or the related materials except to use such information solely for the purpose of and only during the time it sells the Products. Customer shall not copy the design of any of the Products or use or cause to be used any Product design or related materials for its own benefit or for the benefit of any other party. The covenants contained in this section shall remain effective throughout the term of this Agreement and thereafter unless specifically waived by Nexwatch in writing.

The information in this document is subject to change without notice. © 2000 NexWatch, Inc.

## PROGRAMMING ETHERNET DEVICES

This covers all of the steps needed to get the LANSRL100 and the PW5K1EN Ethernet Daughter on-line and working. Programming of these units will be outlined below based on EZWebCon version 1.1/7. The LANSRL100 and the PW5K1EN will be referred to as "MSS" or "MSS Device"

### EZWebCon Programming

The MSS Device must have an IP address before you can log into it using EZWebCon. To assign the IP address from EZWebCon:

- Install EZWebCon utility. The EZWebCon executable can be found on the software installation CD.  
Execute EZWEBCON.EXE setup file from the supplied CD.  
Install the application to the local drive. When the program has been installed, execute the application.
- Click on the Lantronix logo menu in the bottom left corner of the EZWebCon window, then select Assign IP Address to Server.
- Fill in the following information:
  - The last three bytes of the MSS's hardware address. The hardware address is printed on the rear/bottom of the MSS Device.
  - The desired IP address.
  - The default subnet is 255.255.255.0. (uncheck the **None** box).
  - Check "Automatically connect and permanently assign the IP address to server".
  - Click OK.
  - Cycle power on the MSS Device. EZWebCon will let you know whether the configuration was successful.

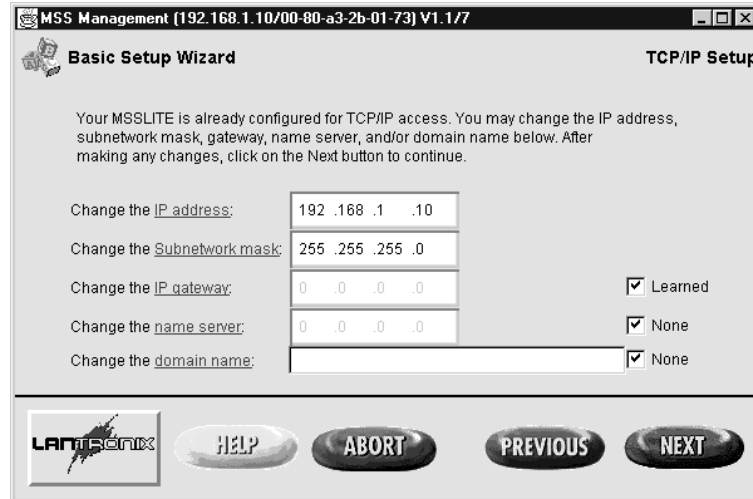
After the MSS Device has been programmed with an IP address, the parameters of the unit can be addressed.

From the main menu of the EZWebcon software, select the "Micro-Serial Servers" icon in the lower right-hand corner of the menu. The software will now attempt to establish communications to the MSS Device. Click Browse and select your IP address defined above. Click OK and OK again on MSS Management screen.

When communication has been established, the MSS Management Menu will appear. This menu will allow the user to program, download, save, and monitor the MSS Device. To begin programming the unit, click on the "Interview Wizard" icon. This wizard will walk through the configuration of the MSS Device.

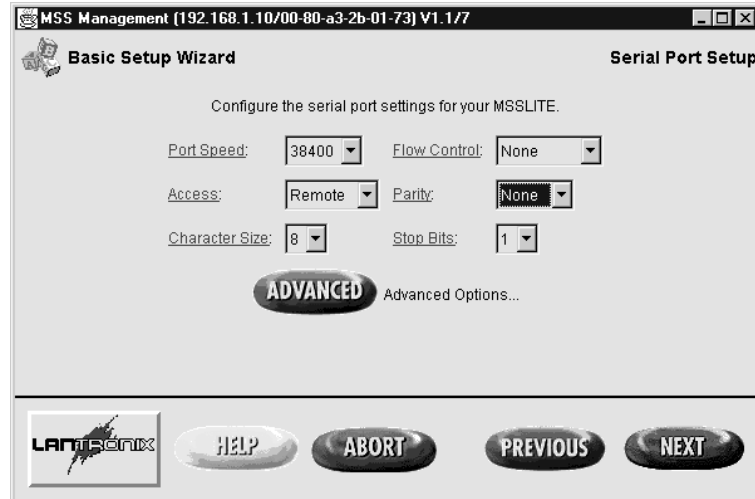
- Select Initial Setup.

The first screen that will appear will be the TCP/IP setup screen. This screen will show the IP address entered in the initial login of the unit. The IP address, subnet, gateway, name server, and domain may be altered from this screen.



The gateway is defaulted to be in the "learned mode". This is an auto-detection that the system will handle. The name server, and domain are defaulted at none.

Following the TCP/IP screen, the NetWare setup properties screen will appear. Accepting the defaulted values should be sufficient for most applications. However, this screen allows the user to alter the routing scheme.

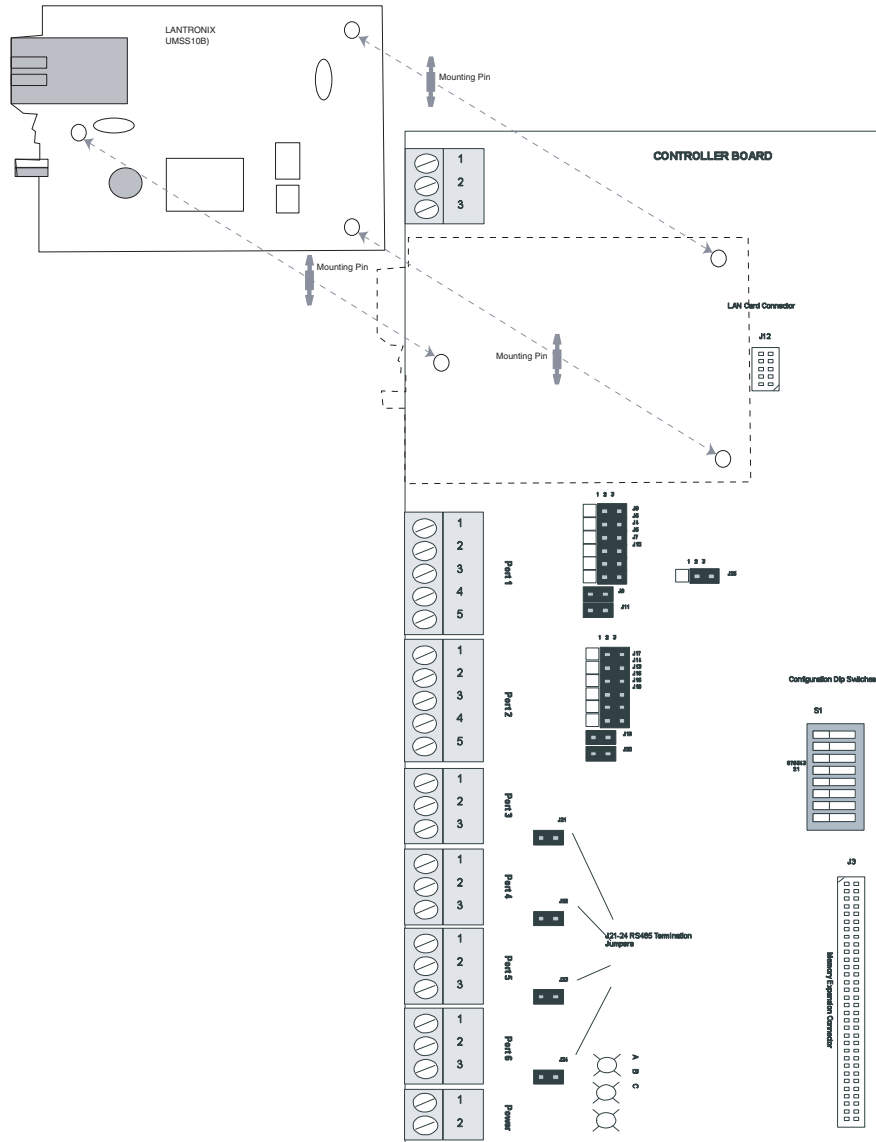


After the networking portion of the setup has been completed, the serial port setup will appear. The values here will apply to the serial port on the MSS Device. For optimum performance it is recommended that the "Port Speed" be set at 38400, "Access" be set as "Remote", and that "Flow Control" be changed to "None". Leave the other entries at their defaulted value. Click on the "Next" button.

After completion of the serial port setup, the configuration is complete. The next screen will allow the user to summarize and edit the configuration, save the configuration to disk, or download the configuration to the MSS Device.

- Download the configuration, and Reboot as per the prompt's request. This completes the EZWebCon setup.

### PW5K1EN Diagram





*Your Access to the Future*

47102 Mission Falls Court • Fremont, CA 94539  
Tel: (510) 360-7800 • Fax: (510) 360-7820  
[www.nexwatch.com](http://www.nexwatch.com)