



# Pro-Watch™ Software Suite

Release 3.81

## Installation Guide

---

**Copyright© 2011 Honeywell. All rights reserved.**

Pro-Watch name and logo are registered trademarks of Honeywell. All other product and brand names are the service marks, trademarks, registered trademarks, or registered service marks of their respective owners. Printed in the United States of America. Honeywell reserves the right to change any information in this document at any time without prior notice.

Microsoft and Windows are registered trademarks of Microsoft Corporation. Windows Server is a trademark of Microsoft Corporation.

### **Ordering Information**

Please contact your local Honeywell Access Systems representative or visit us on the web at <http://www.honeywellintegrated.com/> for information about ordering.

### **Feedback**

Honeywell Access Systems appreciates your comments about this manual. Please visit us on the web at <http://www.honeywellintegrated.com/> to post your comments.



---

# CONTENTS



## Preface

Purpose of this Document .....	iii
Audience.....	iii
Pro-Watch Documentation Set.....	iii
Use of Symbols .....	iii
Compliance.....	iv

## Pro-Watch 3.81 Installation

Runtime Requirements.....	2
Supported Operating Systems .....	2
Supported VMWare .....	2
Installation Types .....	3
Installing Pro-Watch - Preliminary Steps.....	4
Complete Installation .....	8
Server-Only Installation .....	13
Client (Complete) Installation.....	15
Terminal Client Installation.....	19
Database Only Installation .....	20
Custom Installation .....	22
Installing Pro-Watch - Final Steps .....	24
Upgrade Installation Process .....	27



---

# Preface



---

## In this preface...

Purpose of this Document	iii
Audience	iii
Pro-Watch Documentation Set	iii
Use of Symbols	iii

## Purpose of this Document

The *Pro-Watch Software Suite Installation Guide* provides the procedures and information necessary to install Release 3.81 of the Pro-Watch access control system.

These procedures require a Microsoft Windows XP Professional, 2003, or 2008 Server operating system installed on the server and client machines.

## Audience

This guide is written for the Pro-Watch system administrator who installs the Pro-Watch software on local machines.

## Pro-Watch Documentation Set

The Pro-Watch Software Suite documentation set includes the following manuals:

- *Pro-Watch Software Suite Guide* (7-901071-J) in Portable Data File (PDF) format and as an Hypertext Markup Language (HTML) online help file accessed from the software.
- *Pro-Watch Software Suite Quick Reference Guide* in PDF format.
- *Pro-Watch Software Suite Installation Guide* (7-901073-C) in PDF format.
- *Pro-Watch Software Suite Release Notes*, Release 3.81.

## Use of Symbols

The following symbols appear in this guide:



**Danger:** Dangers provide information that you must follow to avoid the risk of physical injury.



**Warning:** Shock warnings provide information that you must follow to avoid physical injury by electrical shock.



**Caution:** Cautions provide information that you must follow to avoid damage to the hardware or software components of the system.



**Note:** Notes provide important information about a procedure or topic.

**Tip:** Tips provide information that maximizes the implementation of a feature.

## **Compliance**

To obtain applicable EU compliance Declaration of Conformities for this product, please refer to our website,  
<http://www.security.honeywell.com/hsce/international/index.html>.

For any additional information regarding the compliance of this product to any EU-specific requirements, please contact:

### **Honeywell Security & Communications**

Honeywell Security - Quality Assurance Dept., Newhouse Industrial Estate

Motherwell

Lanarkshire ML1 5SB

Scotland

United Kingdom

Tel: +44(0) 1698 738200

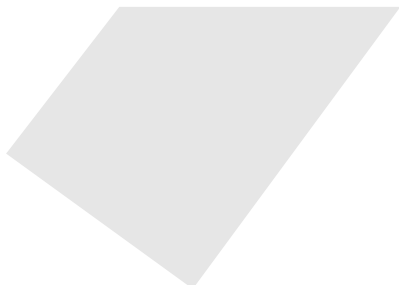
Email: [UK64Sales@Honeywell.com](mailto:UK64Sales@Honeywell.com)





---

# Pro-Watch 3.81 Installation



---

## In this guide...

Runtime Requirements	2
Supported Operating Systems	2
Installation Types	3
Installing Pro-Watch - Preliminary Steps	4
Complete Installation	8
Server-Only Installation	13
Client (Complete) Installation	15
Terminal Client Installation	19
Database Only Installation	20
Custom Installation	22
Installing Pro-Watch - Final Steps	24
Upgrade Installation Process	27

## Overview

This guide documents the installation of the Pro-Watch 3.81 software. Note that after you install this software, you will also need to complete the Pro-Watch licensing procedure documented in the *Pro-Watch Software 3.81 Keys Guide*, 800-01823.

## Runtime Requirements

Pro-Watch (PW) Software Suite 3.81 requires:

- MDAC 2.8 SP1
- Microsoft .Net Framework 3.5 SP1 (32-bit required)
- Microsoft Windows Installer 4.5
- Microsoft Windows PowerShell 1.0

Pro-Watch Software Suite 3.81 also requires Microsoft SQL Server 2005 or 2008. If neither is installed, the Pro-Watch installation program will install Microsoft SQL Server 2008 Express for you. Note, however, that both the MS SQL x32 and x64 installation executables must be in the same folder as the Pro-Watch installation executable.



**Caution:** Ensure that these required components are present on the local system; if they are not, you must install them before continuing with the rest of the PW installation.



**Note:** The setup file and installation instructions in this guide are valid only for Pro-Watch Version 3.6 or greater. Pro-Watch Software Suite Release 3.7 must be already installed if you are upgrading to Release 3.81.

## Supported Operating Systems

Pro-Watch 3.81 supports the following operating systems:

- Windows XP Professional - Service Pack 1 or greater. For Service Pack 2, you need to open certain ports in the Windows Firewall.
- Windows Vista
- Windows 7
- Windows 2003 Server - Service Pack 1 or greater. You need to open certain ports in the Windows Firewall.
- Windows 2008 Server - Service Pack 1 or greater.



**Note:** Pro-Watch 3.81 currently does not support Windows NT 4.0, Windows 2000 Server, or Windows XP Home.

## Supported VMWare

Pro-Watch 3.81 supports VMWare ESXi version 4.0.0.

## Installation Types

Below are the configuration options for installing a new instance of Pro-Watch as described in the section [Installing Pro-Watch - Preliminary Steps](#) on page 4.

- **Complete Pro-Watch Installation** – Installs all of the Pro-Watch components. Provides full server and client functionality.
- **Server-Only Pro-Watch Installation** – Installs only the Pro-Watch Server and configures the database.



**Note:** Configuring the Pro-Watch database involves either installing a new database or upgrading a pre-existing database to function with this version of Pro-Watch.

- **Pro-Watch Client (Complete)** – Installs only the Pro-Watch client applications.
- **Pro-Watch Terminal Client** – Installs only the Pro-Watch client terminal application.
- **Pro-Watch Database Only** – Configures the Pro-Watch database.



**Note:** Configuring the Pro-Watch database involves either installing a new database or upgrading a pre-existing database to function with this version of Pro-Watch.

- **Custom Pro-Watch Installation** – Allows the installation of Pro-Watch components custom selected from a list.



**Note:** The Custom Pro-Watch Installation option should only be used by advanced users who understand what components of Pro-Watch are compatible with one another.

In addition to all the above types, there is also a process to **upgrade** an existing version of Pro-Watch. This is described separately in the section [Upgrade Installation Process](#) on page 27.

## Installing Pro-Watch - Preliminary Steps

1. Double-click the **Pro-Watch Installation Wizard** icon to display the Pro-Watch Setup Wizard welcome page:

*Figure 1 Welcome Screen*



2. Click **Next** to display the **Pro-Watch License Agreement** screen:

*Figure 2 License Agreement*



- Click the radio button to confirm agreement with the licensing terms and click **Next** to display the **Pro-Watch Configurations** screen:

*Figure 3 Configuration Options*



#### *Select an Option Button*

- Select the appropriate **option button** to select one the available installation configuration choices described in the table below:

Installation Option	Description
<b>Complete Installation on page 8</b>	Installs all of the Pro-Watch components and provides full server and client functionality. We recommend that you administer Pro-Watch from the same local machine.
<b>Server-Only Installation on page 13</b>	Installs only the Pro-Watch Server and configures the Pro-Watch database.
<b>Client (Complete) Installation on page 15</b>	Installs only the Pro-Watch client applications, the most common installation type when the server components are not needed.
<b>Terminal Client Installation on page 19</b>	Installs only the Pro-Watch terminal client application. This configuration allows a user to use a local camera while using Pro-Watch through Remote Desktop or Microsoft Terminal Server Client.

Installation Option	Description
<b>Database Only Installation on page 20</b>	Configures the Pro-Watch database. This option allows you to install or upgrade a Pro-Watch database without actually installing Pro-Watch.
<b>Custom Installation on page 22</b>	Allows the installation of individual Pro-Watch components (advanced users only).

5. After you select the desired configuration option, in the Select SQL Version field select the version that matches your version and click **Next** to display the first screen for the installation process you have chosen.



**Note:** To install Pro-Watch to a folder other than the default, click **Browse** and select an appropriate folder.



## Complete Installation

1. Complete the [Installing Pro-Watch - Preliminary Steps](#) on page 4.
2. Select the **Complete Pro-Watch Installation** option button as explained in the section [Select an Option Button](#) on page 6.

Figure 4 Complete Installation Selection



3. Select from the drop-down list the SQL version running on your machine.
4. To change the installation path, click **Browse** to find and redefine the path.
5. Click **Next** to display the **Configure Pro-Watch Server** screen.

**Note:** If you do not have a version of SQL installed, the following message appears and SQL Express 2008 will be installed automatically. Click **OK**:

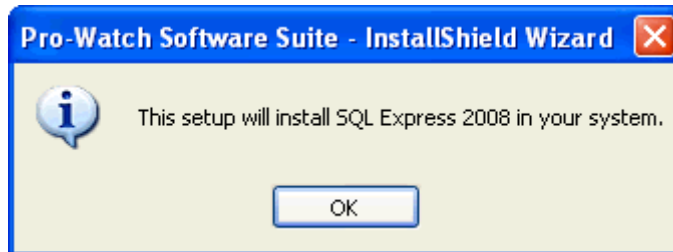


Figure 5 Configure Pro-Watch Server screen

Pro-Watch Software Suite - InstallShield Wizard

**Honeywell** **Pro-Watch™**  
SOFTWARE SUITE

Configure Pro-Watch Server

**Service Account**

Logon Type: Normal Logon Account

User Name: mwyman

Domain Name: DEV

Password: .....

**Information**

If your Pro-Watch installation consists more than one computer, then you should assign the Pro-Watch service a logon account to run under. Then Pro-Watch will be able to access a SQL server database running on another server.

If your Pro-Watch installation is only one computer acting as the server, client and database server, then you may choose to use the "Local System" account, although using a specific account is more secure.

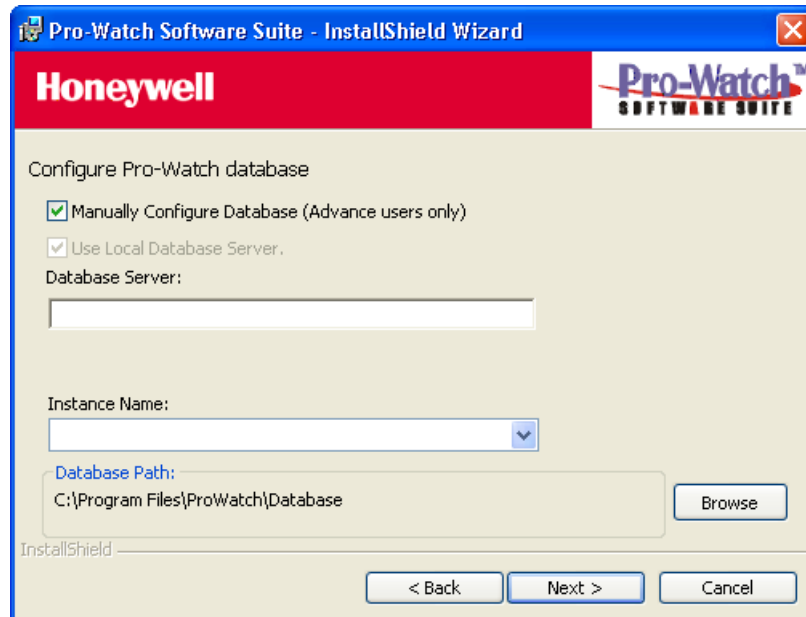
InstallShield

< Back Next > Cancel

6. Select the Logon Type from the drop-down list.
7. Enter your user name.
8. Select the Domain Name from the drop-down list.

9. Enter the correct **Password** and click **Next** to display the **Configure Pro-Watch Database** screen.

*Figure 6 Configure Pro-Watch Database (Manual) Screen*



**Note:** When you select SQL Express 2008 as your database, Pro-Watch displays a DOS dialog box while the SQL DB is downloaded. Allow 5 to 10 minutes for the DOS dialog box to display and do not close it before your system finishes with downloading the SQL DB.

10. For manual configuration, select the **Manually Configure Database (Advanced Users Only)** check box, then type in the Database Server name and select the Instance Name (that is, the Pro-Watch Database name) from the drop-down list. If the SQL server you want to use is not in the list, type its name manually. When you have completed this configuration screen, go to Step 8.



**Caution:** Manual configuration is recommended only for advanced users.

11. To use the local database server on your machine, select the **Use Local Database Server** check box. This selection disables the Database Server field, so you must either type in a new database name or select a local database from the **Instance Name** drop-down list.



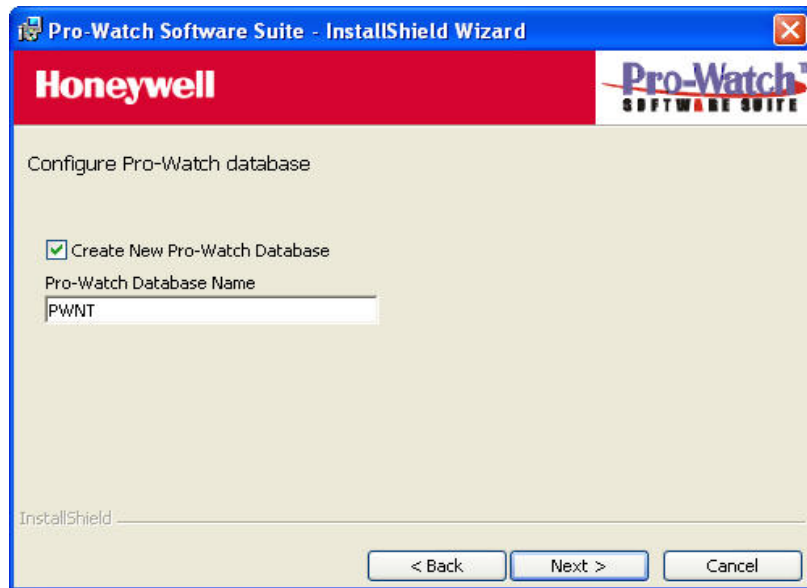
**Note:** The name you enter for the service account at initial login is the account name that will enable you to log in to Pro-Watch.

Figure 7 Pro-Watch Database (Local) Screen



12. Click **Next** to display the continuation of the **Configure Pro-Watch Database** screen where you can create a new database.

*Figure 8 Create New Database Screen*



13. To configure an existing database, leave the check box blank and select a Pro-Watch Database Name from the drop-down list  
OR  
Select the check box and type in the name of the new database that you're creating.
14. Click **Next** to display the **Ready to Install the Program** screen and go to [Installing Pro-Watch - Final Steps](#) on page 24 to finish the installation process.

## Server-Only Installation

The server-only installations do not include any client components.

1. Complete the [Installing Pro-Watch - Preliminary Steps](#) on page 4.
2. Select the **Server-Only Pro-Watch Installation** option button as explained in the section [Select an Option Button](#) on page 6.

Figure 9 Server-Only Selection



3. Select from the drop-down list the SQL version running on your machine.

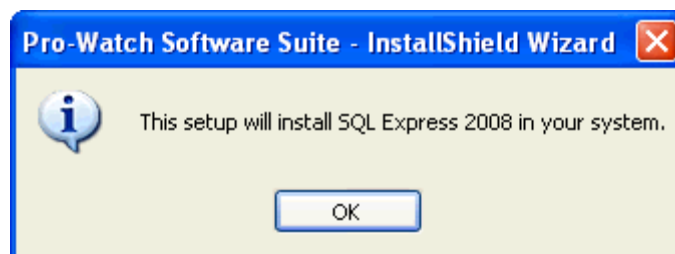


**Note:** When you select SQL Express 2008 as your database, Pro-Watch displays a DOS dialog box while the SQL DB is downloaded. Allow 5 to 10 minutes for the DOS dialog box to display and do not close it before your system finishes with downloading the SQL DB.

4. To change the installation path, click **Browse** to find and redefine the path.

Click **Next** to display the **Configure Pro-Watch Server** screen ([Figure 5](#)).

**Note:** If you do not have a version of SQL installed, the following message appears and SQL Express 2008 will be installed automatically. Click **OK**.



5. Enter the requested information and click **Next** to display the **Configure Pro-Watch Database** screen ([Figure 6](#)).
6. For manual configuration, select the **Manually Configure Database (Advanced Users Only)** check box (see [Figure 6](#)). Select a **Database Server** from the drop-down list and enter the **Pro-Watch Database Name**. If the SQL server you want to use is not in the list, type its name manually.



**Caution:** Manual configuration is recommended only for the advanced users.

7. To use the local database server on your machine, select the **Use Local Database Server** check box. This selection disables the Database Server field, so you must either type in a new database name or select a local database from the **Instance Name** drop-down list. (See [Figure 7](#).)
8. Click **Next** to display the continuation of the **Configure Pro-Watch Database** screen ([Figure 8](#)).
9. To configure an existing database, leave the check box blank and select a Pro-Watch Database Name from the drop-down list  
  
OR  
  
Select the check box and type in the name of the new database you're creating.
10. Click **Next** to display the **Ready to Install the Program** screen and go to [Installing Pro-Watch - Final Steps](#) on page 24 to finish the installation process.

## Client (Complete) Installation

All Client installations include the following components:

- Alarm Monitor.
- Badge Builder.
- Map Builder.
- Registry Manager.
- Reports.
- Pro-Watch Client Application.

1. Complete the [Installing Pro-Watch - Preliminary Steps](#) on page 4.
2. Select the **Pro-Watch Client (Complete)** option button as explained in the section [Select an Option Button](#) on page 6.

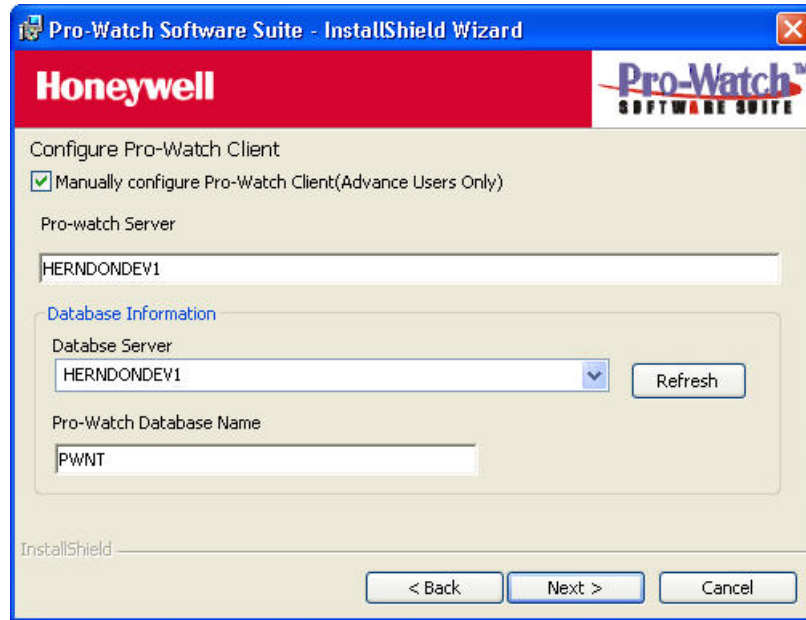
*Figure 10 Client (Complete) Selection*





3. Click **Next** to display the **Configure Pro-Watch Client** screen:

*Figure 11 Configure Pro-Watch Client Screen*



4. For automatic configuration, select a **Pro-Watch Server** from the drop-down list. Click **Refresh** to refresh the server list. Pro-Watch populates the associated **Database Server** name and the **Pro-Watch Database Name** in their respective fields.



**Note:** If the server you want to connect to is not in the list, or if the Pro-Watch Server is not currently running on this server, you must either start it or use the manual configuration.

5. For manual configuration, select the **Manually Configure Pro-Watch Client (Advanced Users Only)** check box. Select a **Database Server** from the drop-down list and enter the **Pro-Watch Database Name**. If the server you want to use is not in the list, type its name manually.



**Caution:** Manual configuration is recommended only for advanced users.

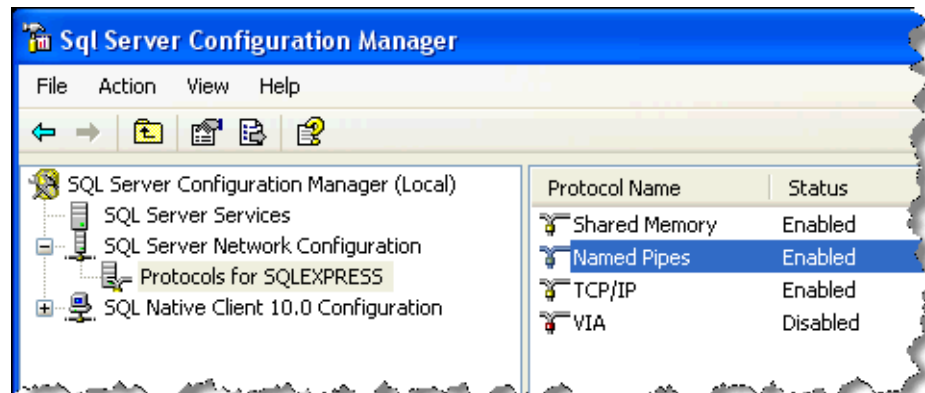
6. Click **Next** to display the **Ready to Install the Program** screen and go to [Installing Pro-Watch - Final Steps](#) on page 24 to finish the installation process.



**Note:** If the program displays the following error message during installation, be sure the Named Pipes and TCP/IP protocols are enabled in the SQL Server Network Configuration:



7. Run the SQL Server Configuration Manager.
8. Select SQL Server Network Configuration > Protocols for SQLEXPRESS to display the protocols.



9. Click the Named Pipes and TCP/IP protocols to display their properties, and use the dropdown list to set the Enabled property to **Yes**.



10. Stop, and then restart, the MS SQL service to activate your changes.

## Terminal Client Installation

1. Complete the [Installing Pro-Watch - Preliminary Steps](#) on page 4.
2. Select the **Pro-Watch Terminal Client** option button as explained in the section [Select an Option Button](#) on page 6.

*Figure 12 Terminal Client Selection*



3. Click **Next** to display the **Ready to Install the Program** screen and go to [Installing Pro-Watch - Final Steps](#) on page 24 to finish the installation process.

## Database Only Installation

1. Complete the [Installing Pro-Watch - Preliminary Steps](#) on page 4.
2. Select the **Pro-Watch Database Only** option button as explained in the section [Select an Option Button](#) on page 6.

Figure 13 Database Only Selection



3. In the Select SQL Version field, select the desired version of Microsoft SQL.
4. Click **Next** to display the **Configure Pro-Watch Database** screen ([Figure 6](#)).



**Note:** When you select SQL Express 2008 as your database, Pro-Watch displays a DOS dialog box while the SQL DB is downloaded. Allow 5 to 10 minutes for the DOS dialog box to display and do not close it before your system finishes with downloading the SQL DB.

5. For manual configuration, select the **Manually Configure Database (Advanced Users Only)** check box, then type in the Database Server name and select the Instance Name (that is, the Pro-Watch Database name) from the drop-down list. If the SQL server you want to use is not in the list, type its name manually.



**Caution:** Manual configuration is recommended only for the advanced users.

6. To use the local database server on your machine, select the **Use Local Database Server** check box. (See [Figure 7](#).) This selection disables the Database Server field, so you must either type in a new database name or select a local database from the **Instance Name** drop-down list.

7. Click **Next** to display the continuation of the **Configure Pro-Watch Database** screen ([Figure 8](#)).
8. To configure an existing database, leave the check box blank and select a Pro-Watch Database Name from the drop-down list

OR

To configure a new database, select the check box and type in the name of the new database. To install the new Pro-Watch database to a folder on the SQL server other than the default one, click **Browse** and select a new path.

9. Click **Next** to display the **Ready to Install the Program** screen. and go to [Installing Pro-Watch - Final Steps](#) on page 24 to finish the installation process.

## Custom Installation

During both the server and client installations, both the client and server components can be customized. The custom setup option enables you to install only a selected subset of the client and server components.

1. Complete the [Installing Pro-Watch - Preliminary Steps](#) on page 4.
2. Select the **Custom Pro-Watch Installation** option button explained in the section [Select an Option Button](#) on page 6.

*Figure 14 Custom Installation Selection*



3. Select from the drop-down list the SQL version running on your machine.



**Note:** When you select SQL Express 2008 as your database, Pro-Watch displays a DOS dialog box while the SQL DB is downloaded. Allow 5 to 10 minutes for the DOS dialog box to display and do not close it before your system finishes with downloading the SQL DB.

4. To change the installation path, click **Browse** to find and redefine the path.

5. Click **Next** to display the **Pro-Watch Custom Installation Options** screen.

Figure 15 Custom Installation Options



6. In this step you choose which components to install. To modify how a component is installed, click on the icon for that component to view the choices:

Figure 16 Feature Installation Options



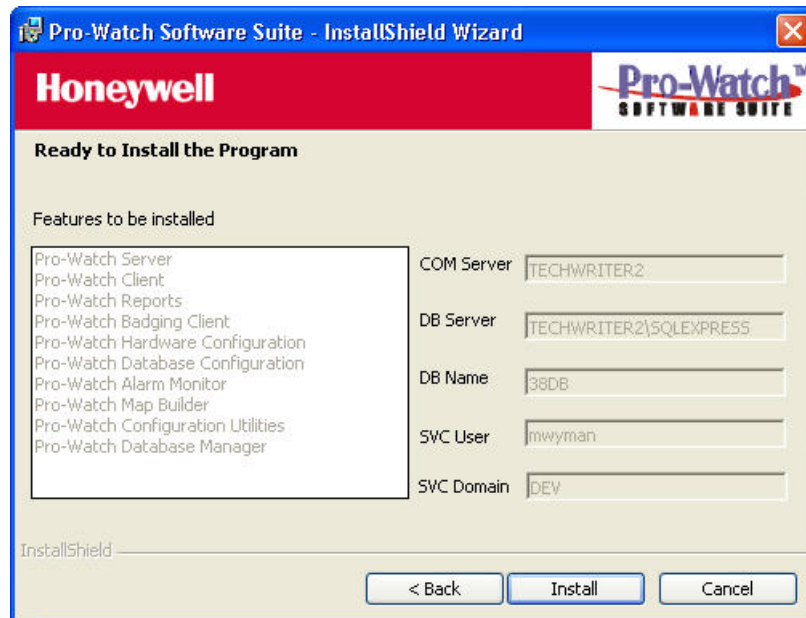
7. Review the components and select the ones you want to install, and click **Next**.
8. The order of the remaining screens depends on your choices of components to install. If you want to install a server (that is, you did not X it out), perform the steps listed in [Complete Installation](#) on page 8. If you do not want to install a server, mark it as unavailable to be installed and click **Next** to display the Configure Pro-Watch Client screen ([Figure 11](#)). Perform the steps in [Client \(Complete\) Installation](#) on page 15 for the rest of the procedure.
9. Go to [Installing Pro-Watch - Final Steps](#) on page 24.



## Installing Pro-Watch - Final Steps

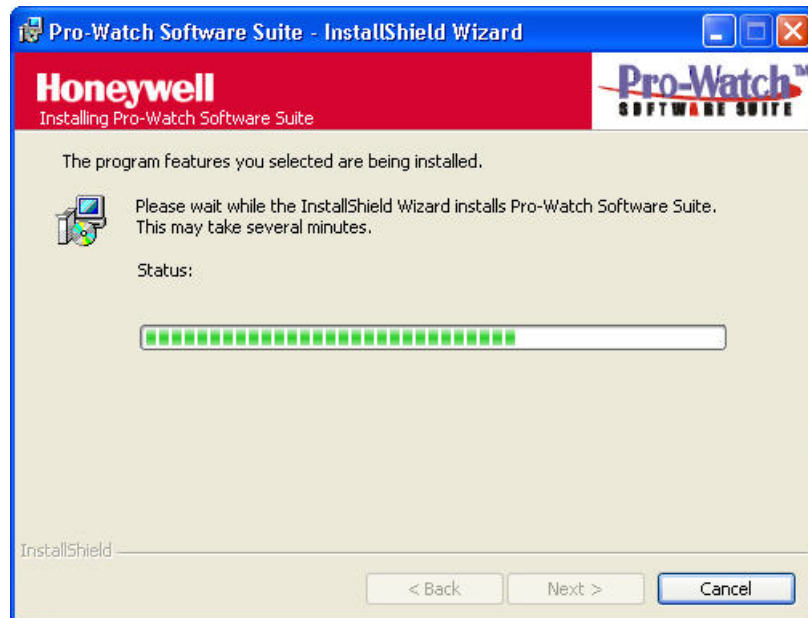
1. The final steps begin on the **Ready to Install the Program** screen:

*Figure 17 Ready to Install Pro-Watch screen*



2. Click **Install** to display a status bar showing the progress of the installation.

*Figure 18 Installation Status*



The process takes several minutes.

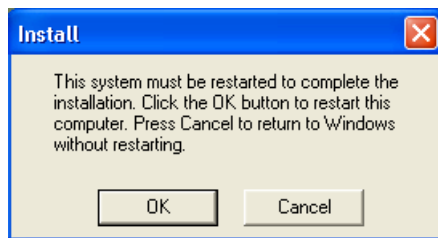
3. When the installation process is finished, click **Next** to display the **InstallShield Wizard Complete** screen.

*Figure 19 Installation Completion Screen*



4. Click **Finish**. A small pop-up informs you that you have to reboot the PC for the installation to take effect.

*Figure 20 Reboot Prompt*



5. Click **OK** to restart your computer.

## Upgrade Installation Process



Pro-Watch Software Suite Release 3.81 must be already installed before you begin this procedure.

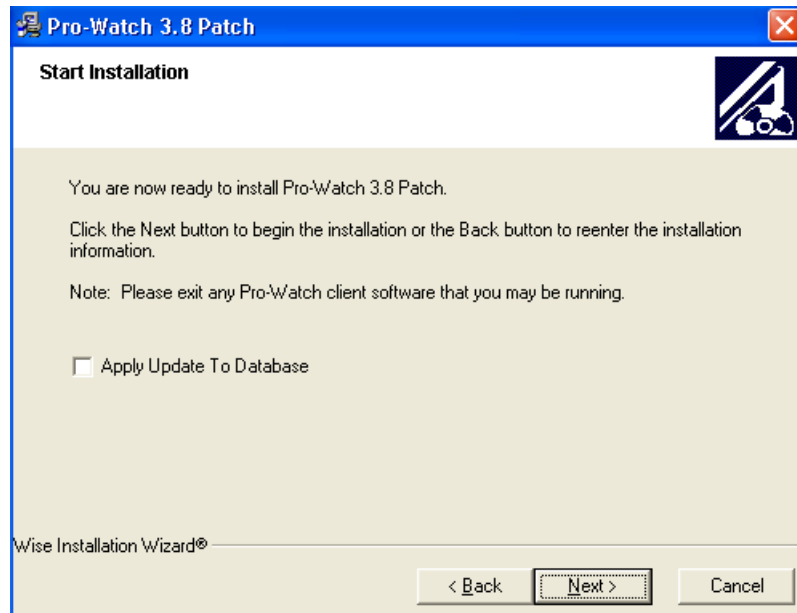
1. Before you begin to install the patch, close out any Pro-Watch software that may be running.
2. Copy the patch executable onto your machine.
3. Double-click on the executable to display the Pro-Watch Setup Wizard **Welcome** screen.

*Figure 21 Welcome Screen*



4. Click **Next** to display the **Start Installation** screen.

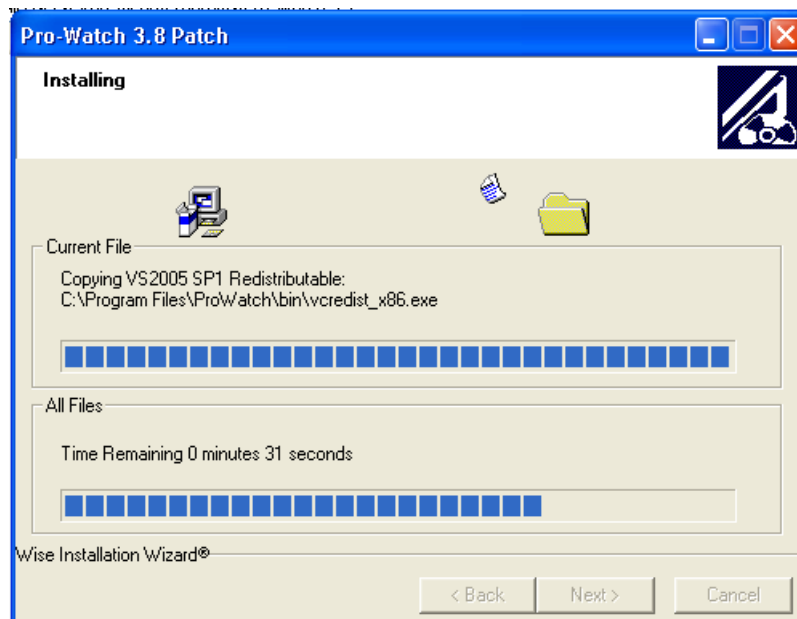
*Figure 22 Start Patch Installation Screen*



If you are installing Pro-Watch Server, select the Apply Update to Database checkbox (if you are installing Pro-Watch Client, the checkbox is greyed out).

5. Click **Next** to display the **Installing** screen.

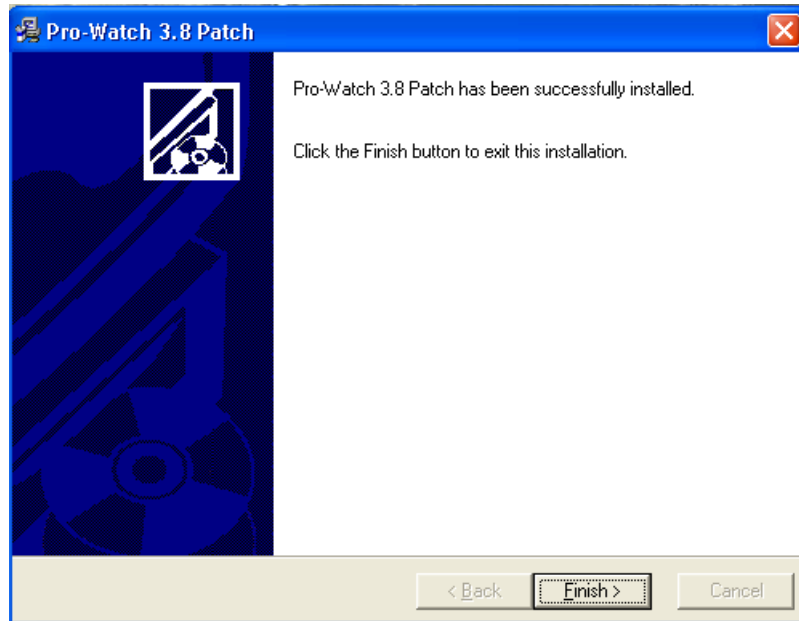
*Figure 23 Installing Patch Screen*



The status bars display the progress of the installation.

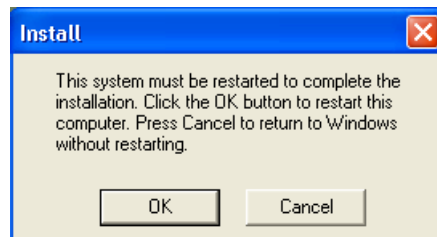
- When the installation is complete, the software automatically displays the message that the installation is successful.

*Figure 24 Successful Installation Message*



- Click **Finish**. A small pop-up informs you that you have to reboot the PC for the patch to take effect.

*Figure 25 Reboot Prompt*



- Click **OK** to restart your computer.





---

Honeywell  
135 West Forest Hill Avenue  
Oak Creek, WI 53154  
(414) 766-1700 Ph  
(414) 766-1798 Fax  
[www.honeywellintegrated.com](http://www.honeywellintegrated.com)

Honeywell – Europe  
Boebingerstrasse 17  
71101 Schonaich  
Germany

Specifications subject to change without notice.  
© Honeywell. All rights reserved.  
Document 7-901073, Revision C