

**ARENA NX / COACH NX  
PRINTOUT**

User Guide





---

# ARENA NX / COACH NX PRINTOUT 4.2.36.xx.x

---

USER GUIDE

**Software License Advisory**

This document supports software that is proprietary to Honeywell GmbH, Honeywell Control Systems Ltd. and/or to third party software vendors. Before software delivery, the end user must execute a software license agreement that governs software use. Software license agreement provisions include limiting use of the software to equipment furnished, limiting copying, preserving confidentiality, and prohibiting transfer to a third party. Disclosure, use, or reproduction beyond that permitted in the license agreement is prohibited.

**Trademark Information**

CentraLine and 'close to you' are trademarks of Honeywell Inc.

BACnet and ASHRAE are registered trademarks of American Society of Heating, Refrigerating and Air-Conditioning Engineers. Microsoft and Windows are registered trademarks, and Windows Internet Explorer are trademarks of Microsoft Corporation. Java and other Java-based names are trademarks of Sun Microsystems Inc. and refer to Sun's family of Java-branded technologies. Mozilla and Firefox are trademarks of the Mozilla Foundation. Echelon, LON, LonMark, LonTalk, and LonWorks are registered trademarks of Echelon Corporation.

Tridium, JACE, Niagara Framework, NiagaraNX Framework, Sedona Framework and Vykon are registered trademarks, and Workbench, WorkPlaceNX, and NXSupervisor, are trademarks of Tridium Inc. All other product names and services mentioned in this publication that is known to be trademarks, registered trademarks, or service marks are the property of their respective owners.





---

# CONTENTS

---

<b>PREREQUISITES .....</b>	<b>7</b>
<b>INVOKE PRINTOUT .....</b>	<b>7</b>
<b>GENERAL PRINTING.....</b>	<b>7</b>
<b>ENHANCED PRINTING .....</b>	<b>11</b>
Open Palette .....	11
Printing Wiresheet .....	12
Printing External Macros .....	12
Printing Online.....	14

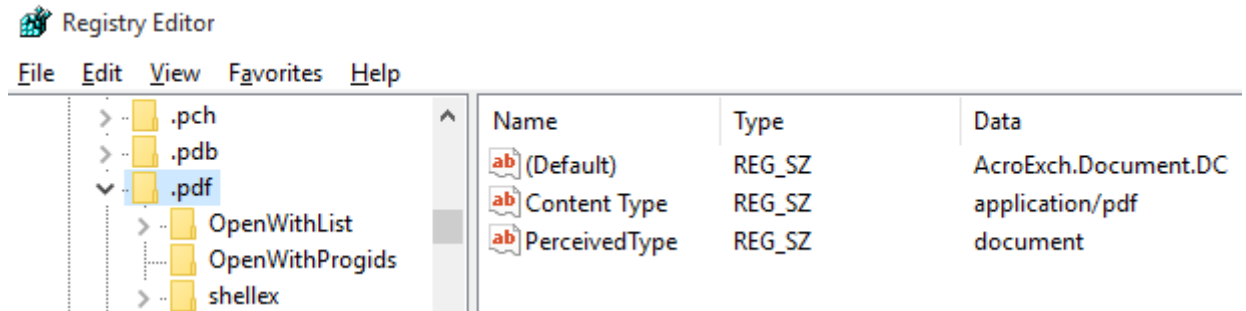
## Prerequisites

The following applications must be installed on the PC for printing:

- Microsoft Word
- Acrobat Reader

After Adobe Acrobat Reader has been installed, the following entry should be available in the Windows Registry:

HKEY\_CLASSES\_ROOT / .pdf / Default = AcroExch.Document.DC



The above entry is the entry of the current Acrobat Reader DC. Depending on the Acrobat Reader Version, the entry can be different.

If there is no entry for Adobe Acrobat Reader in the registry, enter it for your Adobe Acrobat Reader version, otherwise screenshots in printed documents will not be shown as image but as referencing link.

## Invoke Printout

The Printout function is based on projects which can contain multiple stations. You can add stations to a project and remove stations from a project.

Projects can be edited, added and deleted.

For a project, the following station settings can be enabled or disabled for printing:

- Stations
- Services (with extended options)
- Drivers (with extended options)
- Datapoints
- I/O assignment
- Schedules
- Calendars
- Wiresheets
- Parameters
- Plants graphics

In addition, the module labels can be printed or separately.

The settings for selection displayed in the print dialog are saved in a XML based filter file. The XML file can be edited using an XML Editor. Editing the XML file allows modifying the selectable default settings displayed in the print dialog.

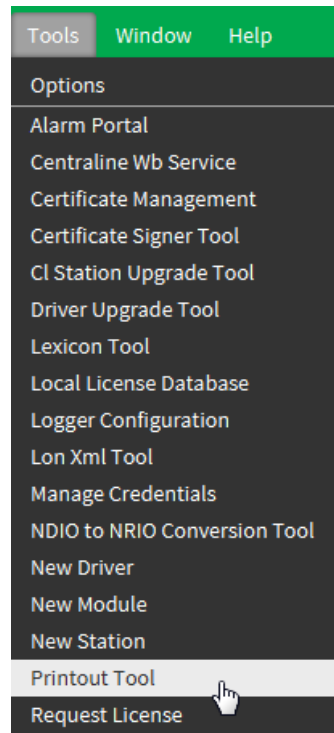
Projects can be printed offline and online (single station only).

## General Printing

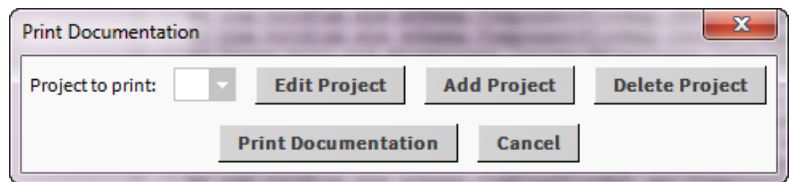
The following procedure applies to Offline and Online Printing.

### Procedure

1. In the **Tools** menu, select **Printout Tool**.

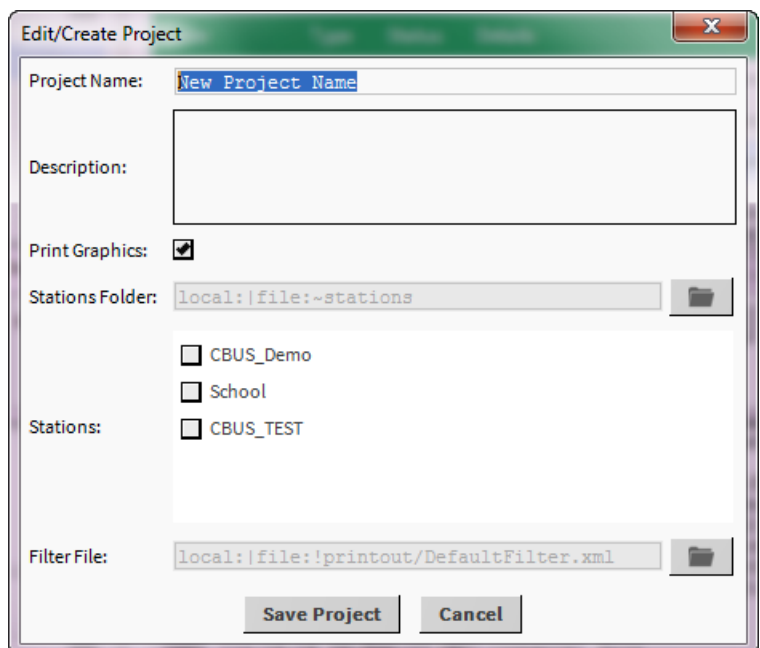


RESULT: The *Print Documentation* dialog box displays.



2. Click **Add Project**.

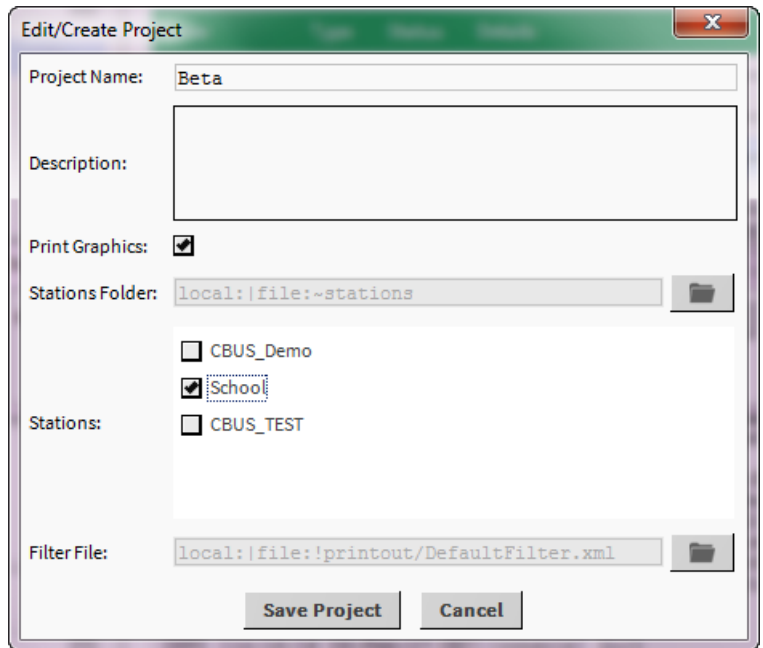
RESULT: The *Edit/Create Project* dialog box displays.



3. In **Project Name**, enter a name.

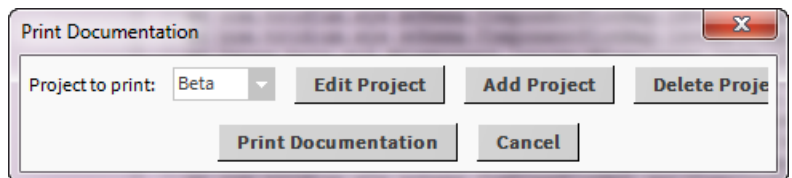
4. In **Stations**, select the station(s).





5. Click **Save Project**.

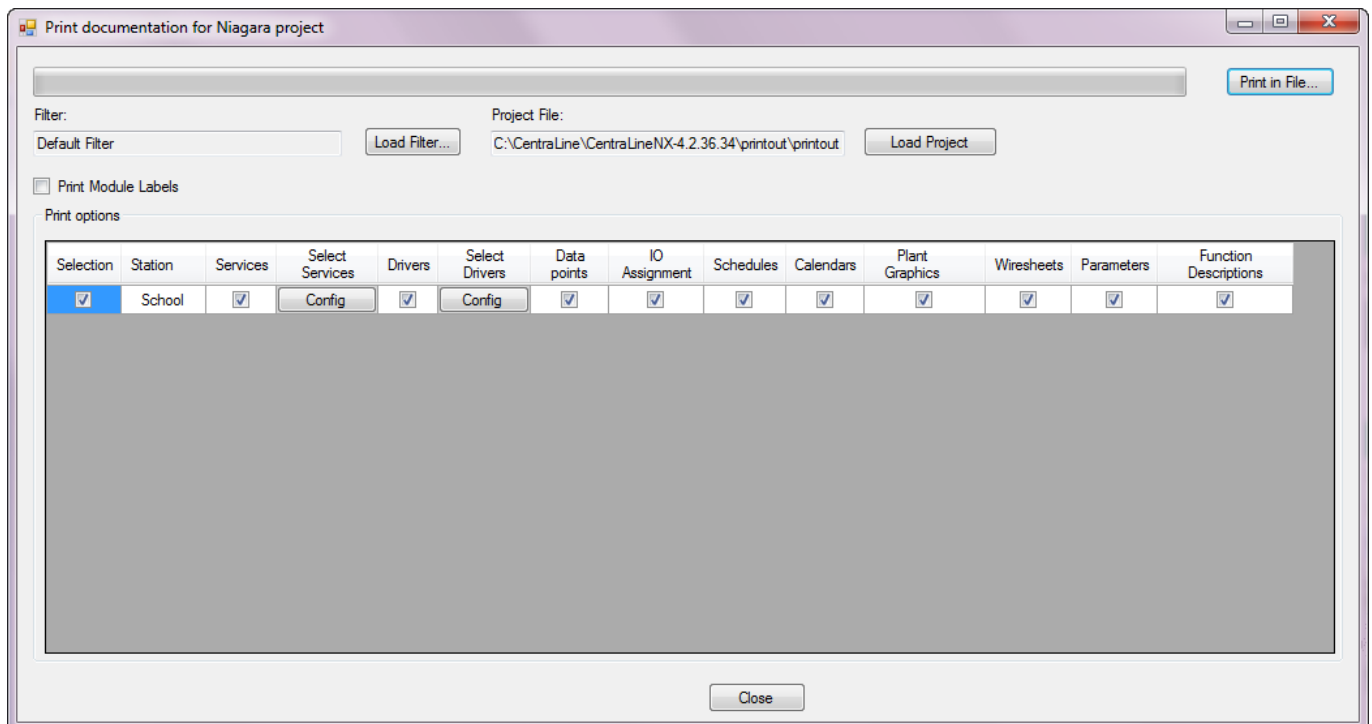
RESULT: The *Print Documentation* dialog box re-displays.



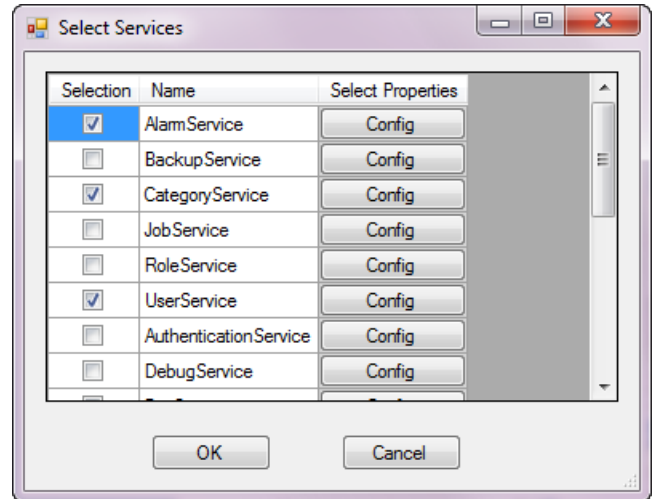
6. In **Project to print**, select the project.

7. Click **Print Documentation**.

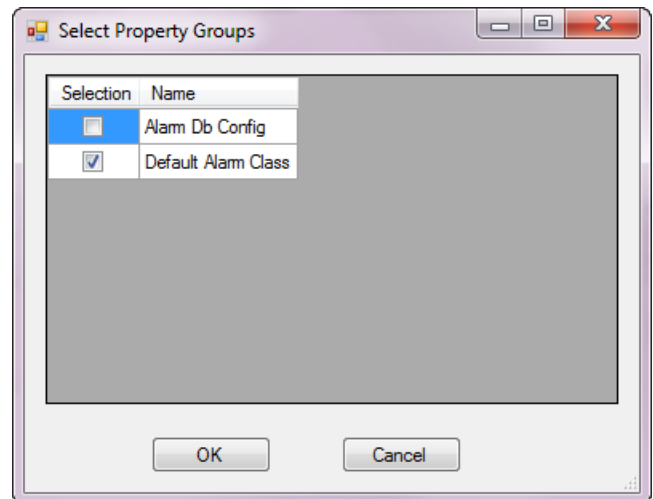
RESULT: The *Print Documentation for Niagara project* dialog box re-displays.



8. In the *Print Documentation for Niagara project* dialog box, do any of the following:
  - a. Click **Load Filter...** if you want to use another filter than the default filter.
  - b. Click **Load Project** if you want to use another project.
  - c. Check **Print Module Labels** if you want to print the module labels additionally.
  - d. In **Print options**, select the settings you want to print.
  - e. In **Print options**, click the **Config** button of **Select Services** or **Select Drivers** if you want to select extended settings of them.
  - f. In the corresponding *Select* dialog box, e.g. *Select Services*, select the extended settings.

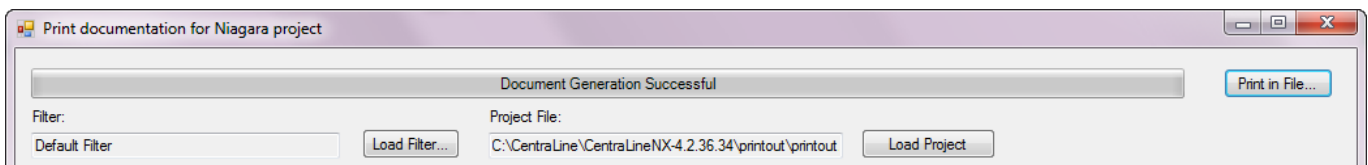


- g. Click **OK**, or select the **Config** button of desired settings to select further properties as displayed in the following *Select Property Groups* dialog box, e.g. for *Select Services*.



- h. Click **OK**, and then click **OK** in the corresponding *Select* dialog box.
9. In the *Print Documentation* dialog box, click **Print in File....**
  10. In the *Save as...* dialog box, enter a file name for the *DOC* file in **File name**.

**RESULT:** The printing process is started as displayed in the progression bar. Successful printing is indicated in the progression bar by the message "Document Generation Successful".



- Open the printed *DOC* file using Microsoft Word and print it on the default printer.

## Enhanced Printing

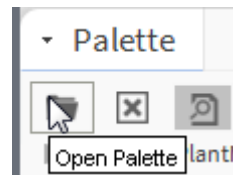
The printout provides the following extended print functions by using the Honeywell Printout module:

- Printing wiresheets
- Printing external macros
- Online printing

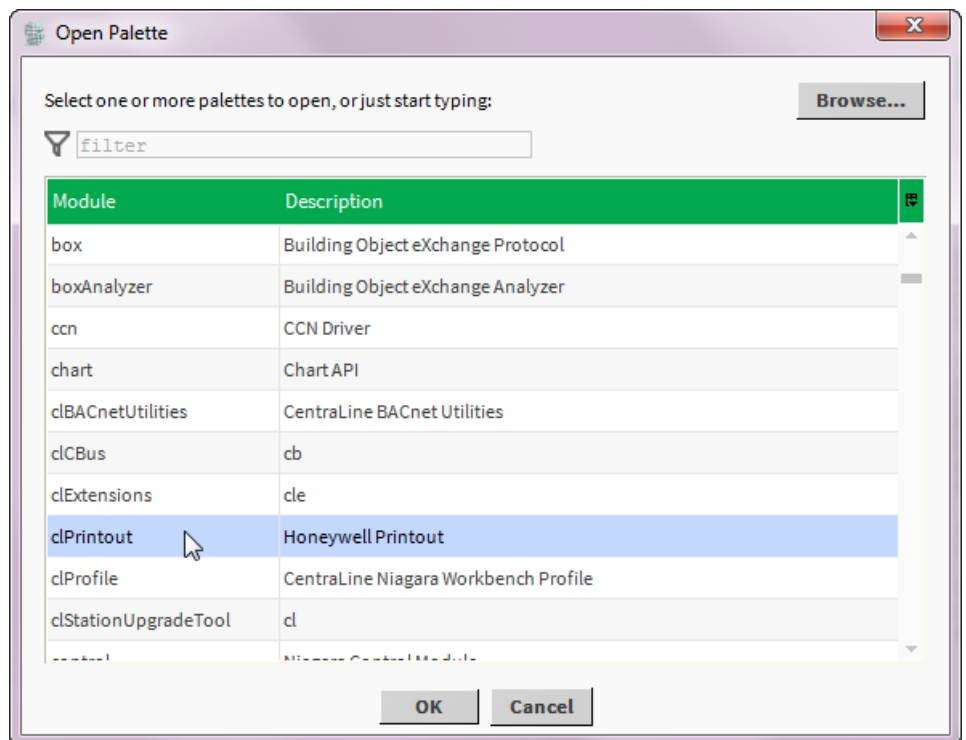
## Open Palette

### Procedure

- In the **Palette** bar, click the **Open** icon.

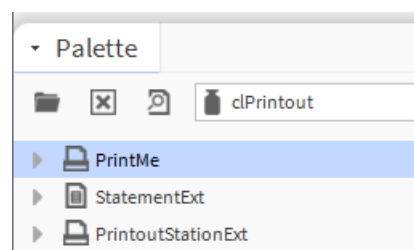


RESULT: The *Open Palette* dialog box displays.



- Select **clPrintout** in the list, and then click **OK**.

RESULT: The clPrintout module is added to the *Palette* bar.



The following functions (extensions) are available in the **ciPrintout** palette:

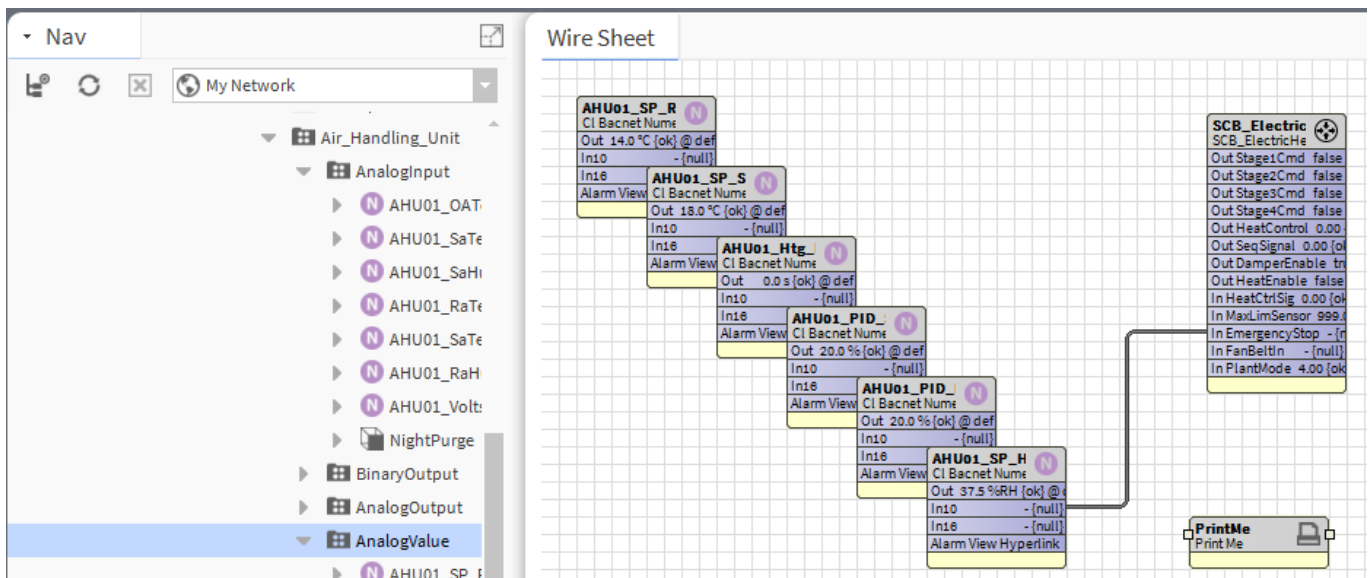
- **PrintMe**  
Printing wiresheet
- **StatementExt**  
Printing external macros
- **PrintoutStationExt**  
Online printing

## Printing Wiresheet

### Procedure

1. Display the wiresheet for the points folder, you want to print.
2. From the **ciPrintout** palette, drag&drop the **PrintMe** extension to the *Points* folder.

RESULT: The **PrintMe** extension is added to the wiresheet.

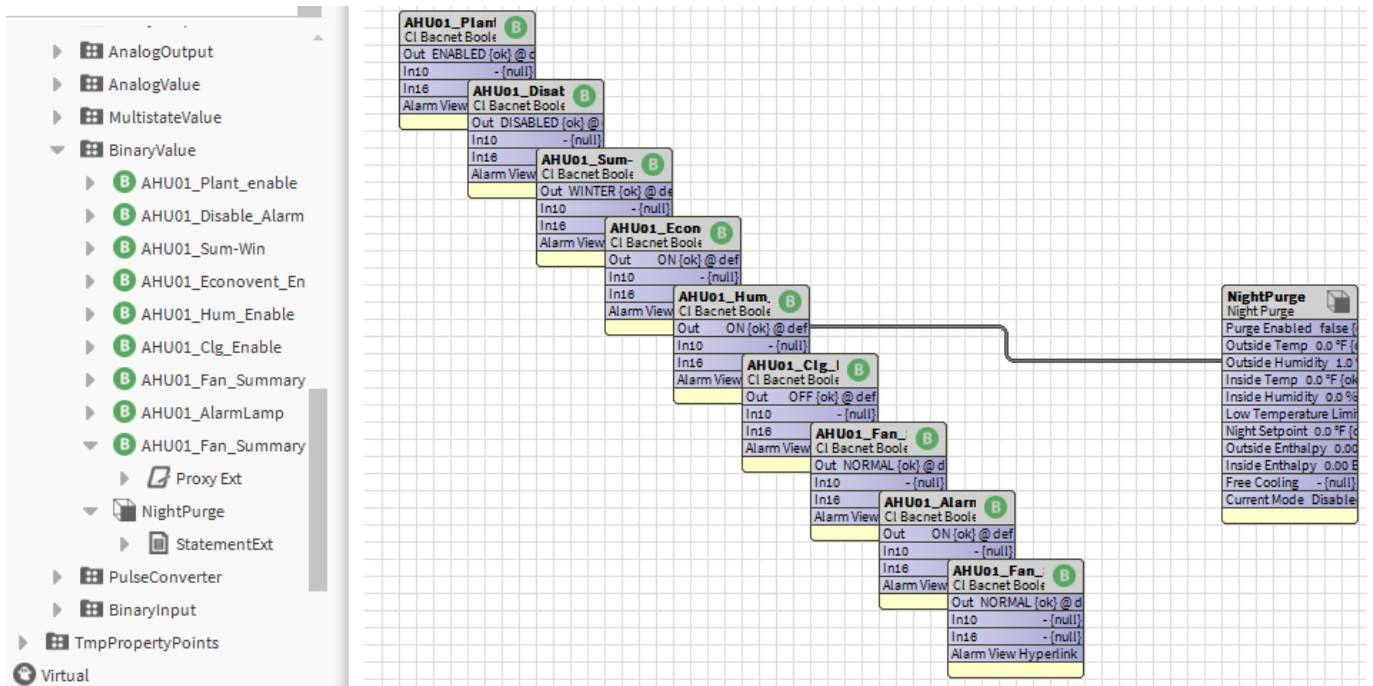


3. Print the wiresheet as the described in the "General Printing" section.

## Printing External Macros

### Procedure

1. If not already done, add the **PrintMe** extension to the wiresheet of the points folder, you want to print.
2. Add the external macro, e.g. "NightPurge" to the points folder.
3. From the **ciPrintout** palette, drag&drop the **StatementExt** extension to the external macro in the points folder in the *Nav* side bar.



RESULT: The **StatementExt** extension is added to the external macro in the Nav side bar.

### Property Sheet

**NightPurge (Night Purge)**

- Temperature Facets: units="F,precision=1°F,min=-inf°F,max=+inf°F
- Humidity Facets: units=%RH,precision=1%RH,min=-inf%RH,max=+inf%RH
- Purge Enabled: false {ok}
- Outside Temp: 0.0 °F {ok}
- Outside Humidity: 1.0 %RH {ok} @ def
- Inside Temp: 0.0 °F {ok}
- Inside Humidity: 0.0 %RH {ok}
- Low Temperature Limit: 0.0 °F {ok}
- Night Setpoint: 0.0 °F {ok}
- Outside Enthalpy: 0.00 BTU/lb {ok}
- Inside Enthalpy: 0.00 BTU/lb {ok}
- Free Cooling: - {null}
- Current Mode: Disabled {ok}
- Setpoint Deadband: 1.0 °F
- Threshold Span: 1.00
- Use Enthalpy: true
- Free Cooling Command: true
- Use Null Output: true

**StatementExt**

Property	Statement Ext
Temperature Facets	Ignore
Humidity Facets	Ignore
Purge Enabled	Input
Outside Temp	Input
Outside Humidity	Ignore
Inside Temp	Input
Inside Humidity	Output
Low Temperature Limit	Input
Night Setpoint	Input
Outside Enthalpy	Output
Inside Enthalpy	Output

- Double-click the external macro in the tree.

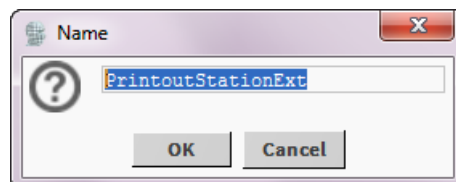
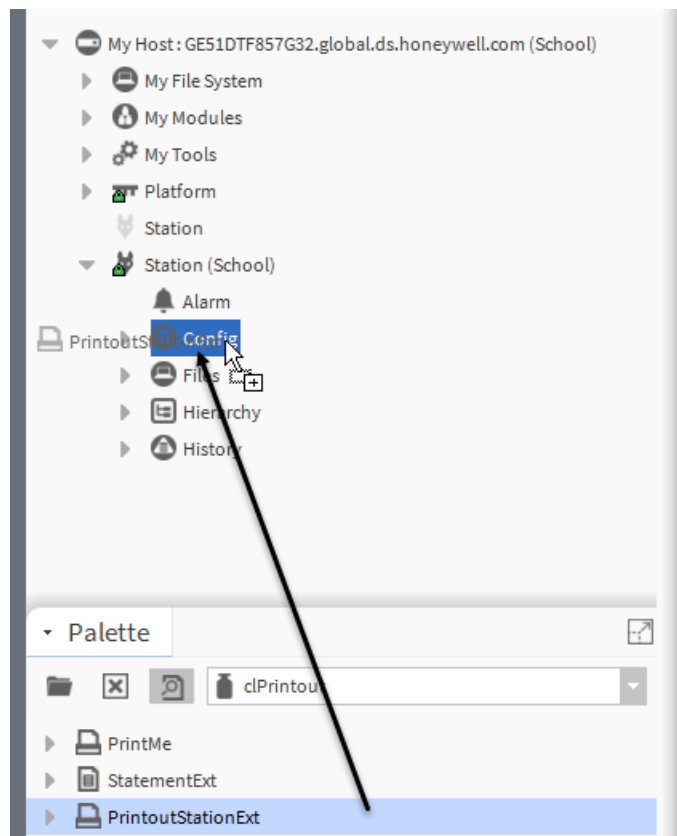
RESULT: On the right, the statement extension properties are displayed.

- Assign the settings (input, output, setting, or ignore) to the macro properties as desired.
- Print the wiresheet as the described in the "General Printing" section.

## Printing Online

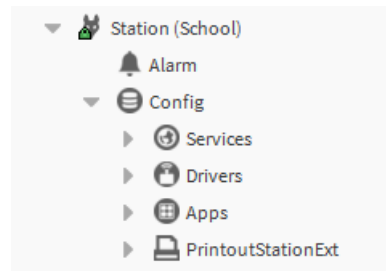
### Procedure

- Connect to the station.
- From the **clPrintout** palette, drag&drop the **PrintoutStationExt** extension to the *Config* folder.

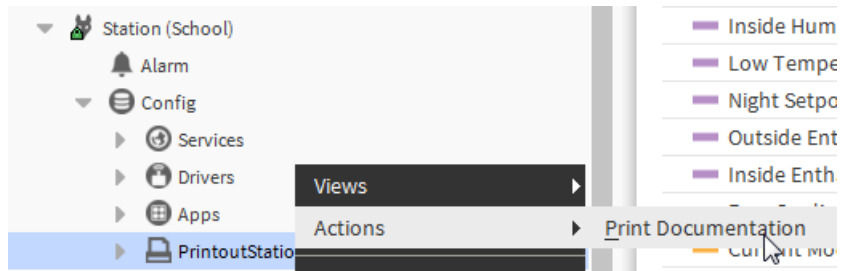


- Confirm the **Name** by clicking **OK**.

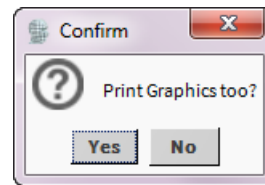
RESULT: The **PrintoutStationExtension** is added to the *Config* folder.



- Right click on the **PrintoutStationExtension** in the tree, and then click **Print Documentation** in the context menu.



RESULT: A *Confirm* message box displays asking if you want to print the graphics too.



- Click **Yes** if you want to print the graphics too, or click **No** if you do not want to print the graphics, and then click **OK** button.

RESULT: The *Print Documentation for Niagara project* dialog box displays for printing

- Continue with printing as described in the "General Printing" section.

Manufactured for and on behalf of the Environmental and Energy Solutions Division of Honeywell Technologies Sàrl, Rolle, Z.A. La Pièce 16, Switzerland by its Authorized Representative:

Centraline  
Honeywell GmbH  
Böblinger Strasse 17  
71101 Schönaich, Germany  
Phone +49 (0) 7031 637 845  
FAX +49 (0) 7031 637 740  
info@centraline.com  
www.centraline.com

Subject to change without notice  
EN2Z-1022GE51 R0217

