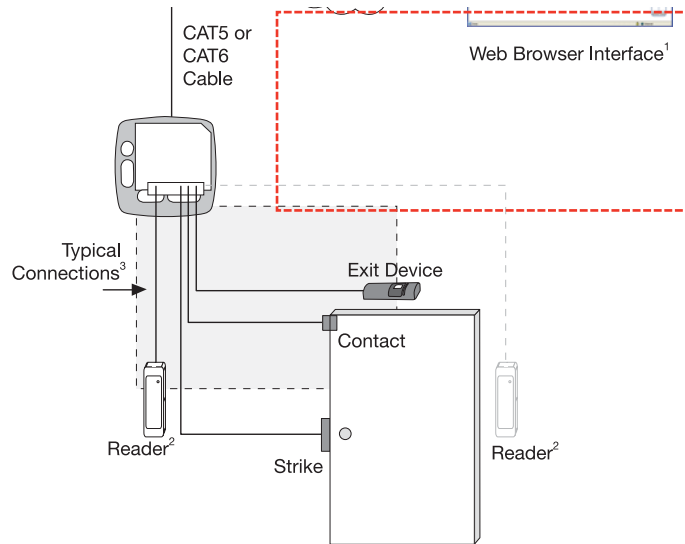


NetAXS-123

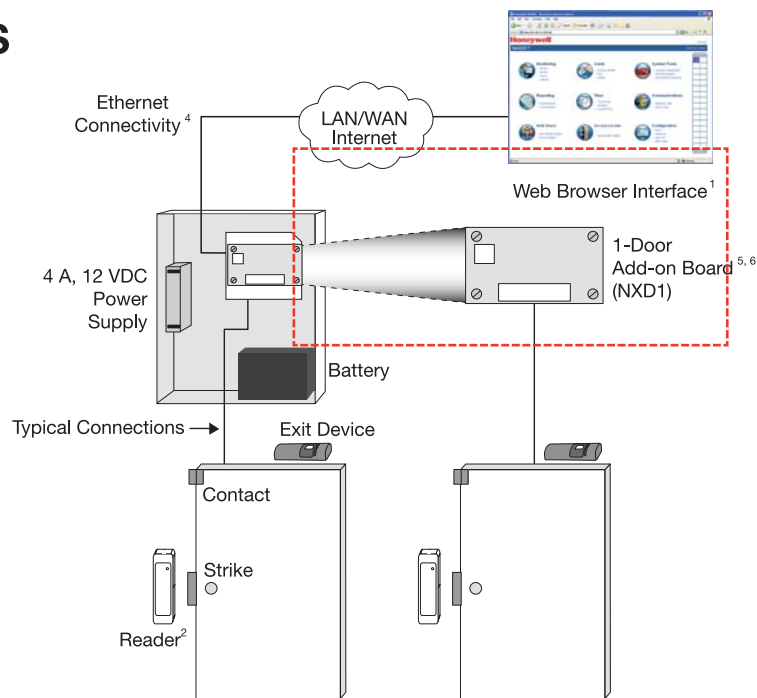
Stand-alone, Modular, Web-enabled Access Control System

SYSTEM OVERVIEW



2 DOORS

1 Door Standard Metal Enclosure shown with 1-Door Add-on Board



¹ Also compatible with WIN-PAK® XE, WIN-PAK® SE, WIN-PAK® PE and WIN-PAK® PRO CS (Managed Access)

² When using an IN and OUT reader, BOTH readers must have HOLD lines

³ 450 mA, 12 VDC is maximum available to power strike, reader(s) and input devices when using a 802.3af PoE connection. If unit is externally powered with a 12 VDC supply, higher current is available.

⁴ USB compatibility for local configuration

⁵ 1-door add-on board compatible with compact plastic enclosure

⁶ Requires external power when used in compact plastic enclosure

⁷ 2-door add-on board is not compatible with compact plastic enclosure

⁸ When mixing NetAXS-123 and 4-door NetAXS (NetAXS-4) controllers, the NetAXS-123 must be configured as the first panel or gateway

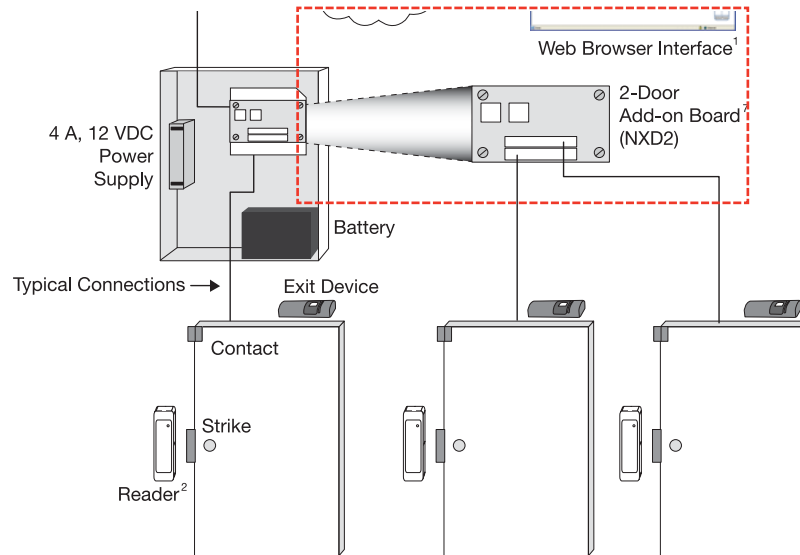
Elements inside the red dotted line are not permanently required. Connecting NetAXS-123 to a network enables remote and local management opportunities.

NetAXS-123

Stand-alone, Modular, Web-enabled Access Control System

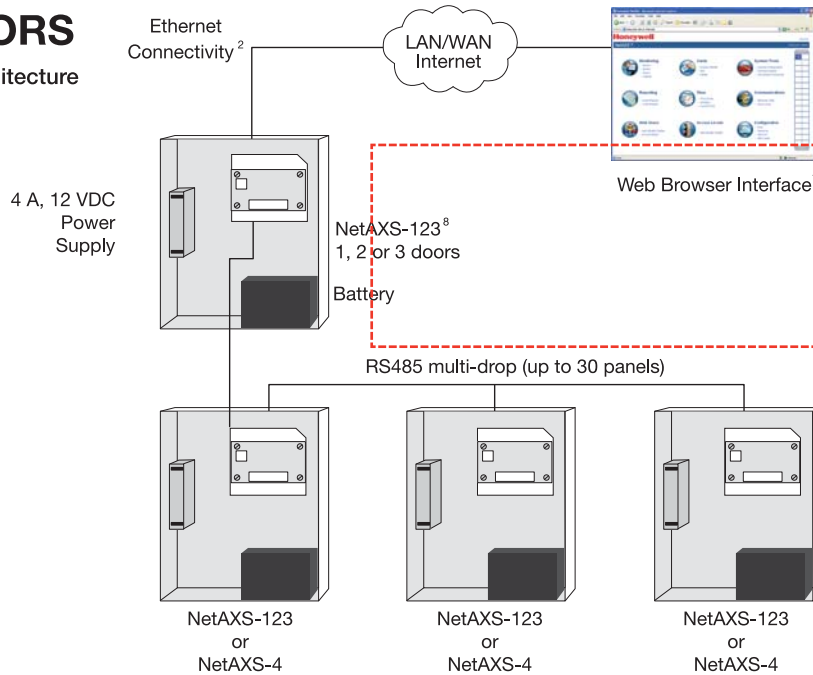
SYSTEM OVERVIEW

Add-on Board



> 3 DOORS

Scalable Architecture



¹ Also compatible with WIN-PAK® XE, WIN-PAK® SE, WIN-PAK® PE and WIN-PAK® PRO CS (Managed Access)

² When using an IN and OUT reader, BOTH readers must have HOLD lines

³ 450 mA, 12 VDC is maximum available to power strike, reader(s) and input devices when using a 802.3af PoE connection. If unit is externally powered with a 12 VDC supply, higher current is available.

⁴ USB compatibility for local configuration

⁵ 1-door add-on board compatible with compact plastic enclosure

⁶ Requires external power when used in compact plastic enclosure

⁷ 2-door add-on board is not compatible with compact plastic enclosure

⁸ When mixing NetAXS-123 and 4-door NetAXS (NetAXS-4) controllers, the NetAXS-123 must be configured as the first panel or gateway

Elements inside the red dotted line are not permanently required. Connecting NetAXS-123 to a network enables remote and local management opportunities.