

Application brief

Eclipse Product:	ThermJet Burners
Submitted by:	Brian Shepard – Eclipse Combustion (South Carolina)
Application:	Annealing Bell Furnace
Description:	<p>Process: Annealing after draw. 9-20 gauge.</p> <p>Load: 20,000 Lbs.</p> <p>Cycle: 4 Hour heat and cool.</p> <p>Temp: 1500° F</p>

Mar-Mac had ten North American 4423-3 burners with block holders. Flame safeguards were Honeywell RA890F. Valve train was in poor condition. System was designed to shutdown with single burner failure.

System was problematic.

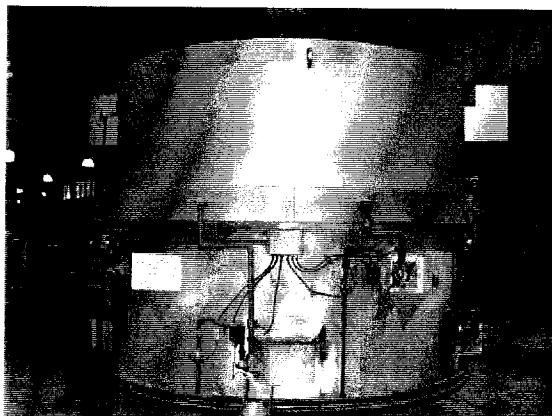
- Burner failures, block failures and flame impingement on inner container.
- Loss of production due to burner problems.
- Quality problems due to interrupted cycles.
- Difficult to set up and maintain burners.

We replaced the burners with ten TJ040, Medium Velocity ThermJet burners with Alloy Tubes. Main valve train was shipped prepped and wired.

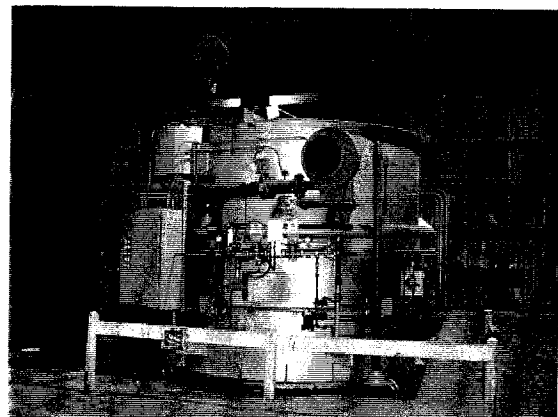
Veri-Flame controls were sold and installed by Mar-Mac. System was designed to allow burners to be shut down if not needed.

Equipment Supplied.

- 2) KDI MVD valves used at each burner.
- SMJ Blower with inlet filter.
- Piped and wired main gas valve train.
- 10) VeriFlame controls.
- 1) Eclipse 2300 High temperature limit.



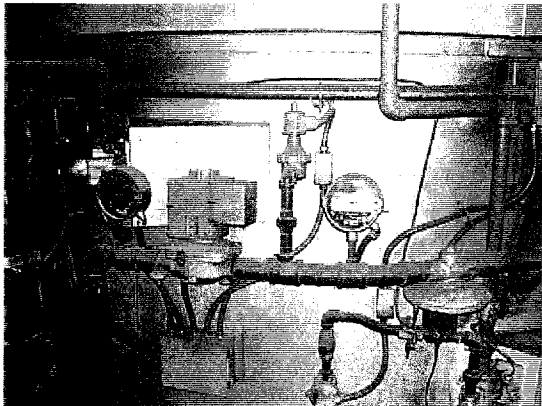
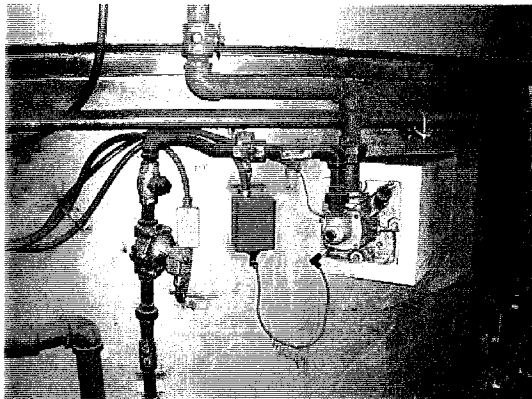
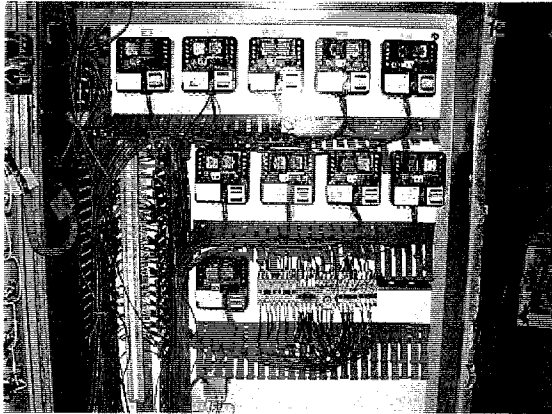
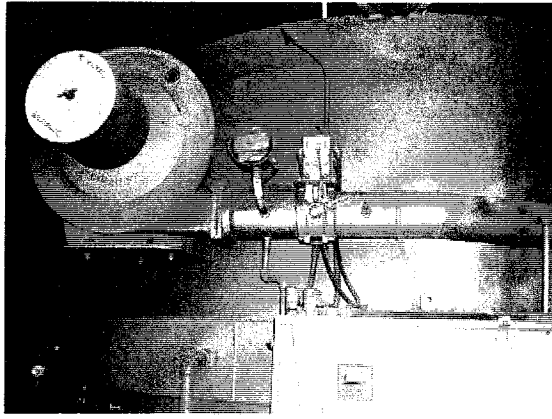
Before



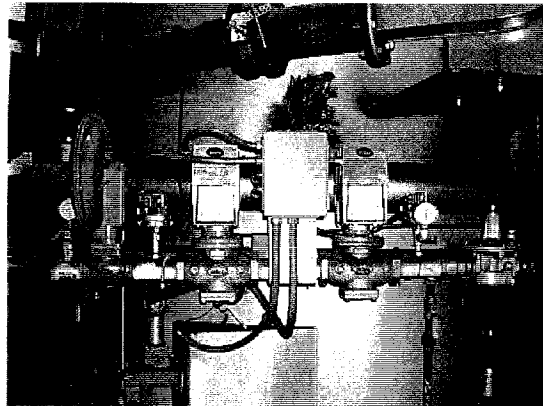
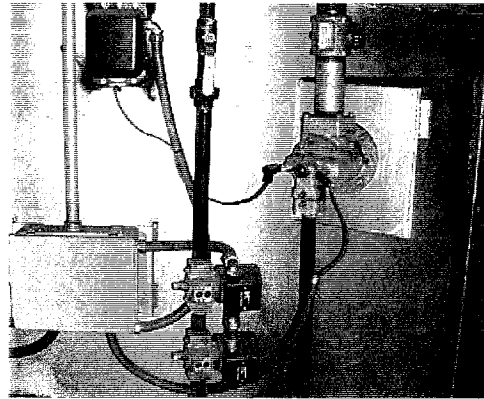
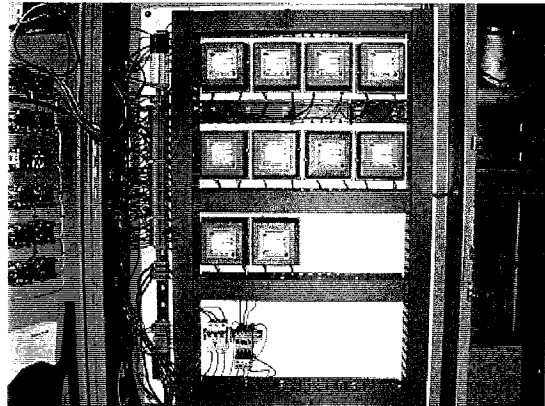
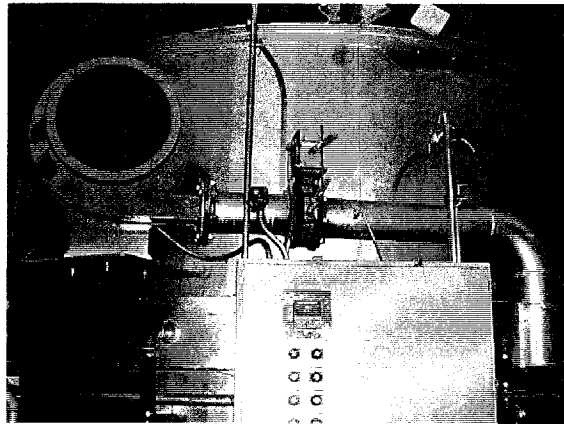
After

See page 2 for additional before and after pictures.

Before



After



ECLIPSE
Innovative Thermal Solutions

Eclipse Combustion
www.eclipsenet.com
ISO 9001 Registered