

# OXY-THERM<sup>®</sup> TITAN<sup>™</sup>

## Compact flame oxy-fuel burner

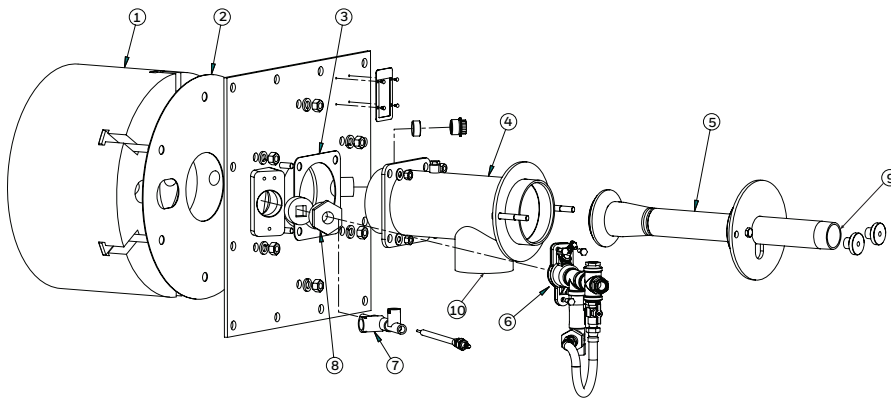
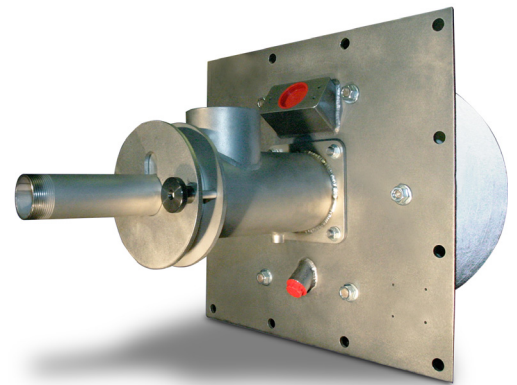
- High temperature oxy-fuel flame reduces fuel consumption
- Sealed, self-cooling design minimizes air infiltration and maintenance
- Wide variety of capacities and large turndown ratio (8:1) provide precise process temperature control
- Compact flame geometry for easy integration in most processes
- Clean combustion with any fuel gas, including an up to 20% Hydrogen/80% Natural Gas fuel blend
- Ignition flexibility with air or oxygen pilots
- Typical applications include ladle heating, reheat furnaces, rotary hearths, forge furnaces, reaction furnaces, and any high temperature, sealed process



### PRODUCT DESCRIPTION

The OXY-THERM<sup>®</sup> TITAN<sup>™</sup> burner provides a more compact flame profile than other OXY-THERM<sup>®</sup> burners. Its flame length and mounting design make it ideal for applications requiring higher capacities in vertical fired applications requiring a “down-fired” mounting such as ladle preheating. It is also an excellent burner for rotary melters, waste incinerators and process heaters.

Oxygen enters the burner housing and exits around the fuel nozzle where it mixes with the fuel. The oxygen-fuel flame discharges through the refractory block throat and develops a tightly wrapped compact flame pattern.

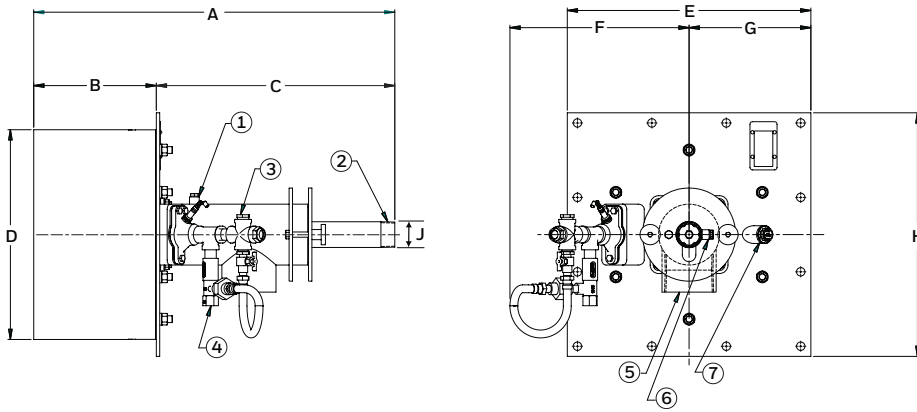


- 1 Block
- 2 Block gasket
- 3 Housing gasket
- 4 Housing
- 5 Nozzle
- 6 Air-fuel pilot
- 7 Oxy-fuel pilot
- 8 Oxy-fuel pilot bushing
- 9 Fuel inlet
- 10 Oxygen inlet

### AVAILABLE OXY-THERM<sup>®</sup> TITAN<sup>™</sup> SIZES

OXY-THERM<sup>®</sup> TITAN<sup>™</sup> burners are available in two sizes: 1-1/2" and 2". The 1-1/2" size ranges from 2 to 12 MBtu/h, and the 2" size ranges from 10 to 30 MBtu/h. Each size may be customized within these ranges to your capacity needs. Standard refractory block material is suitable for furnace temperatures up to 3000°F. Optional materials for more challenging environments are available upon request.

## DIMENSIONS AND WEIGHTS



- 1 1/4" NPT combustion oxygen pressure tap
- 2 Fuel gas inlet
- 3 3/8" NPT gas inlet
- 4 3/8" NPT air inlet
- 5 3" NPT combustion oxygen inlet
- 6 1/4" NPT fuel gas pressure tap
- 7 3/4" NPT coupling location for optional flame sensing device

**NOTE:** Burner is displayed with an air-gas pilot. An oxygen-fuel pilot is available. Refer to "Specifications of OXY-THERM® TITAN™ Burners" for more information.

### DIMENSIONS IN INCHES UNLESS STATED OTHERWISE

Burner size	A	B	C	D Ø	E	F	G	H	J Ø
1-1/2"	26.68	9.06	17.62	15.5	18.0	13.2	9.0	18.0	1-1/2"
2"	29.5	9.06	20.44	15.5	18.0	13.7	9.0	18.0	2"

BURNER PART WEIGHT LBS	WEIGHT LBS
1-1/2" burner assembly <sup>1</sup>	185
2" burner assembly <sup>1</sup>	195
1-1/2" burner block	125
2" burner block	115

1. Assembly includes the burner block

## TYPICAL EMISSIONS

Exact emissions performance may vary in your application. Contact MAXON for information on installation specific estimates. No guarantee of emissions is intended or implied.

### For more information

The Honeywell Thermal Solutions family of products includes Honeywell Combustion Controls, Honeywell Combustion Safety, Honeywell Combustion Service, Eclipse, Exothermics, Hauck, Kromschroder and Maxon.

To learn more about our products, solutions and services, visit [ThermalSolutions.Honeywell.com](http://ThermalSolutions.Honeywell.com) or contact your Honeywell Sales Engineer.

### Honeywell Process Solutions

#### Honeywell Thermal Solutions (HTS)

2101 CityWest Blvd, Houston, TX 77042

Strothweg 1, 49504 Lotte, Germany

Building #1, 555 Huanke Road,  
Zhangjiang Hi-Tech Industrial Park,  
Pudong New Area, Shanghai 201203

[www.honeywellprocess.com](http://www.honeywellprocess.com)

DS-20-04-ENG | 10/2020  
© 2020 Honeywell International Inc.

**Honeywell**