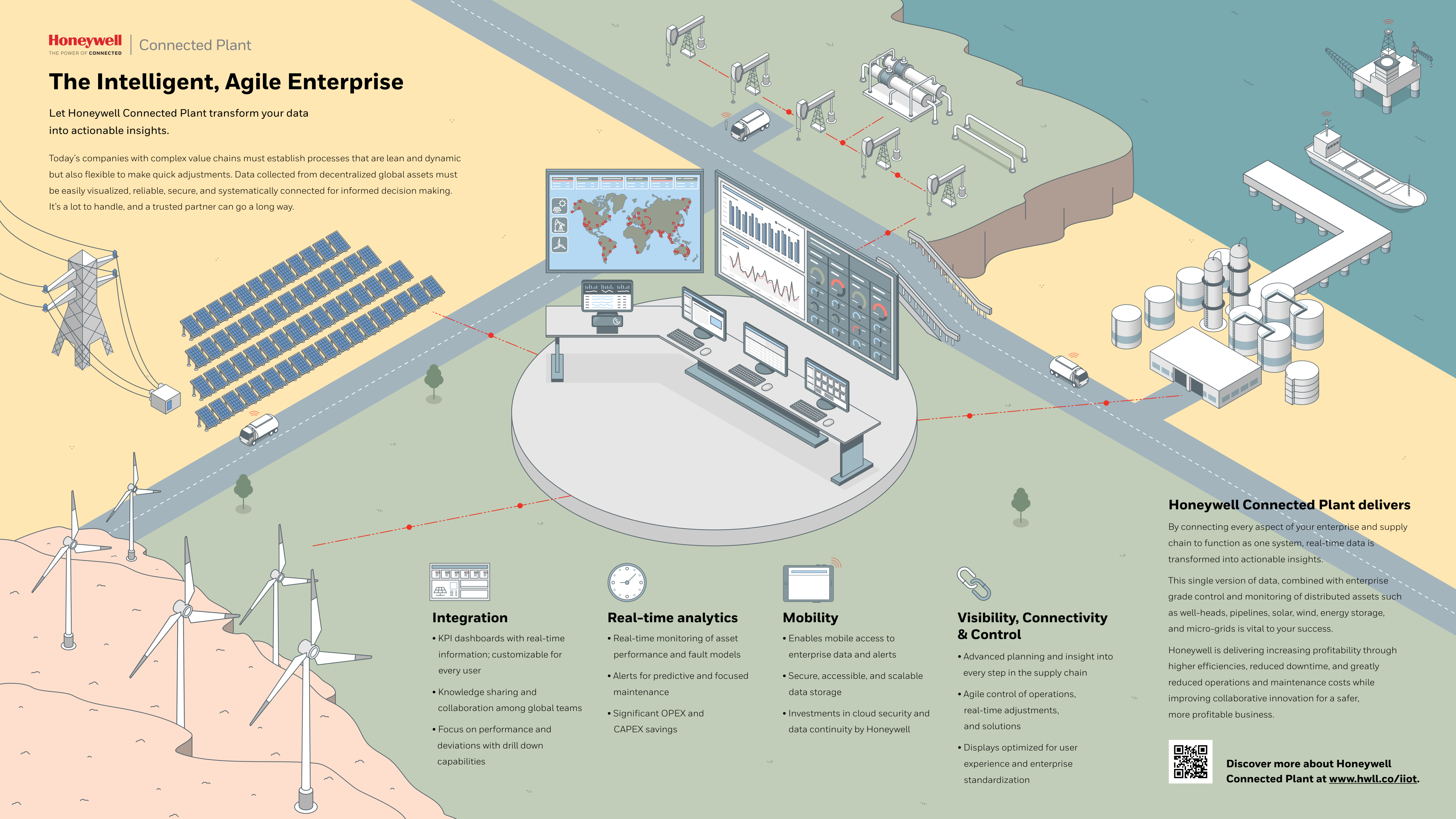


The Intelligent, Agile Enterprise

Let Honeywell Connected Plant transform your data into actionable insights.

Today's companies with complex value chains must establish processes that are lean and dynamic but also flexible to make quick adjustments. Data collected from decentralized global assets must be easily visualized, reliable, secure, and systematically connected for informed decision making. It's a lot to handle, and a trusted partner can go a long way.



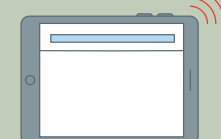
Integration

- KPI dashboards with real-time information; customizable for every user
- Knowledge sharing and collaboration among global teams
- Focus on performance and deviations with drill down capabilities



Real-time analytics

- Real-time monitoring of asset performance and fault models
- Alerts for predictive and focused maintenance
- Significant OPEX and CAPEX savings



Mobility

- Enables mobile access to enterprise data and alerts
- Secure, accessible, and scalable data storage
- Investments in cloud security and data continuity by Honeywell



Visibility, Connectivity & Control

- Advanced planning and insight into every step in the supply chain
- Agile control of operations, real-time adjustments, and solutions
- Displays optimized for user experience and enterprise standardization

Honeywell Connected Plant delivers

By connecting every aspect of your enterprise and supply chain to function as one system, real-time data is transformed into actionable insights.

This single version of data, combined with enterprise grade control and monitoring of distributed assets such as well-heads, pipelines, solar, wind, energy storage, and micro-grids is vital to your success.

Honeywell is delivering increasing profitability through higher efficiencies, reduced downtime, and greatly reduced operations and maintenance costs while improving collaborative innovation for a safer, more profitable business.



Discover more about Honeywell Connected Plant at www.hwll.co/iiot.