

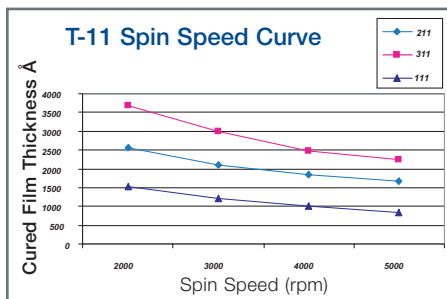
**Honeywell**  
**ACCUGLASS® T-11**  
**Spin-on Glass**

# Honeywell ACCUGLASS® T-11 Spin-on Glass

## ILD AND IMD PLANARIZATION AND GAP FILL

### BENEFITS

- Industry proven performance and broad acceptance
- T-11 fills gaps as small as 0.3µm
- High thermal stability. Compatible with hot aluminum and tungsten plug processing. Permeability allows for hydrogen annealing of gate oxides
- Thickness variation within a wafer of less than 1%. Wafer to wafer variation of less than 2%
- Lower dielectric constant compared to silicates and phosphorus silicates
- Crack resistance up to 6000Å
- Good adhesion to top and bottom dielectric layers



### OVERVIEW

The ACCUGLASS T-11 ( $\kappa = 3.8$ ) Spin-on Glass (SOG) Series is a family of methyl-siloxane polymers used for interlevel and overcoat passivation in the manufacture of integrated circuits.

The ACCUGLASS T-11 series is specially formulated to fill narrow (down to 0.3µm), high aspect ratio (up to 4) gaps without voids while planarizing multi-level metal devices.

ACCUGLASS T-11 contains 10 wt% CH<sub>3</sub> (methyl) groups bonded to Si atoms in the Si-O backbone. The specific formulation results in a stable dielectric constant, high crack resistance, excellent gap fill and planarization properties of the cured film.

Thin films of ACCUGLASS T-11 are applied using a commercial coater and cured in a vertical or horizontal furnace to thicknesses up to 3800Å (single coat) and 6000Å (double coat).

### FEATURES

#### Thickness

Product	Thickness Range
111	860Å – 1,500Å
211	1,600Å – 2,600Å
311	2,200Å – 3,800Å

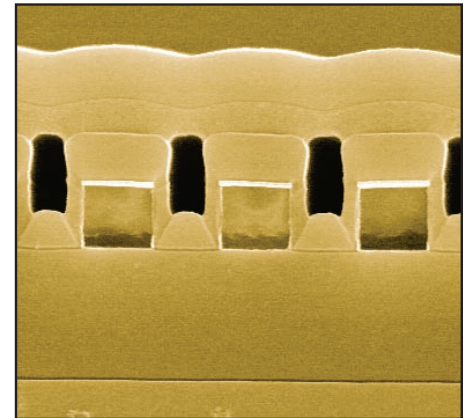
#### Film Properties Post Cure

Dielectric Constant @ 1 MHz: 3.8  
Tensile Stress: 120 MPa  
Refractive Index @ 633 nm: 1.39  
Coeff. of Thermal Expansion:  $5 \times 10^{-6} \text{K}^{-1}$

### APPLICATIONS

- ILD and PMD Planarization
- Overcoat Passivation
- Gapfill

ACCUGLASS T-11 is suitable for gap fill and planarization of ILD and PMD structures used in multilevel metal IC devices. Typically, partial etchback (PEB) is used for ILD and total etchback (TEB) is used for PMD. ACCUGLASS T-11 can also be used to improve planarization of the final passivation layer.



ACCUGLASS T-11 planarizes and fills gaps to 0.35µm.

#### Material Properties

111 Shelf Life @ 4°C: 12 months  
211 Shelf Life @ 4°C: 8 months  
311 Shelf Life @ 4°C: 6 months

Shelf Life Equivalencies @ Room Temperature: 20°C

111– 1 Day at RT = 2 days in 4°C Storage  
211– 1 Day at RT = 5 days in 4°C Storage  
311– 1 Day at RT = 5 days in 4°C Storage

Bottle sizes available:  
125ml, 250ml, 500ml, 1L, 2L, 4L



RESPONSIBLE CARE®  
OUR COMMITMENT TO SUSTAINABILITY

#### Honeywell Electronic Materials

USA: 1-509-252-2102  
China: 86-21-28942481  
Germany: 49-5137-999-9199  
Japan: 81-3-6730-7092  
Korea: 82-2-3483-5076  
Singapore: 65-6580-3593  
Taiwan: 886-3-6580300 ext.312  
[www.honeywell.com/sm/em](http://www.honeywell.com/sm/em)

Although all statements and information contained herein are believed to be accurate and reliable, they are presented without guarantee or warranty of any kind, express or implied. Information provided herein does not relieve the user from the responsibility of carrying out its own tests and experiments, and the user assumes all risks and liability for use of the information and results obtained. Statements or suggestions concerning the use of materials and processes are made without representation or warranty that any such use is free of patent infringement and are not recommendations to infringe any patent. The user should not assume that all toxicity data and safety measures are indicated herein or that other measures may not be required. PB0041011Rev13  
©2011 Honeywell International Inc.

# Honeywell