

**NEW**

# SKYREACH ANCHOR

Fast, intuitive, lightweight overhead personal fall protection anchor device primarily used during decking for horizontal formwork operation. Rotates for 360° usability.



“ This cleverly designed system has exceptional usability and easy installation. No expensive crane time is needed and the system delivers excellent all-round visibility. ”

**COMBISAFE**<sup>®</sup>  
SAFETY BY SYSTEMS

NEW

# SKYREACH ANCHOR

## DESIGNED TO PREVENT FALLS FROM HEIGHT

Perfect for when working on a leading edge or installing decking for horizontal formwork, the SkyReach Anchor has no trailing cables or wires. With an operating radius of 8.5m the SkyReach Anchor gives access to a surface area close to 230m<sup>2</sup> when used with a 6.2m retractable fall arrest block and harness extension.

## MULTIPLE APPLICATIONS

With a horizontal boom of 2m the SkyReach Anchor is intuitive, easy to use, quick to install and removes the need for cranes. In addition, when used with either the Steel Flange Clamp or the COMBISAFE Loading System Base the unit can be used for the safe loading and unloading of vehicles on site or in yards.

Compliant to EN795:2012 Type B and certified by DEKRA EXAM GmbH, the SkyReach Anchor delivers a superior overhead anchor point for personal fall protection equipment.

## UNIQUE BENEFITS

- Can be carried and installed by hand by one person without the use of a crane
- Folds in seconds for relocation, crane access and storage
- Good all-round visibility, including for crane operatives

## KEY FEATURES

- A lightweight anchor (25kg) with slip resistant finish that can be installed without the need for expensive crane time
- Fully compliant to EN795:2012 Type B and CE certified by DEKRA EXAM GmbH.\*
- Delivers an operating radius of 8.5m
- Gives access to a working surface area close to 230m<sup>2</sup>
- Option of two attachments; the cast-in socket for use with concrete structures when decking formwork, or the Steel Flange Clamp for use as a fall arrest system when loading and unloading vehicles next to a steel structure.
- Compliant to EN795:2012 Type E and CE certified by DEKRA EXAM GmbH when used with the COMBISAFE Loading System MkII for the loading and unloading of vehicles on site or in yards
- The overhead anchor reduces swing fall hazards and removes trip hazards from cables, wires or ropes
- Foldable boom and brace locks into position in seconds using the attached Lock Pin
- Reflective tapes on booms gives good visibility for crane operatives
- Integral Endless Webbing Sling for lifting by crane if needed.

\* When used with the SkyReach Cast-in Sleeve or SkyReach Steel Flange Clamp

# FIXINGS AND SYSTEM COMPONENTS



## SkyReach Anchor

Delivered folded with an integrated lifting sling, the lightweight anchor device is made of steel and can be manoeuvred and relocated by one person.

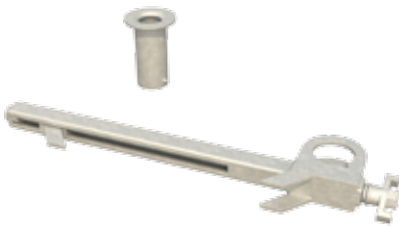
**Art. No. 8100** 3.1m x 2.0m Weight 25kg  
Hot dip galvanised/painted steel



## Cast-in Sleeve

Cast directly into concrete to create housing for the SkyReach Anchor. A plastic plug covers the opening to protect against the ingress of dirt and water.

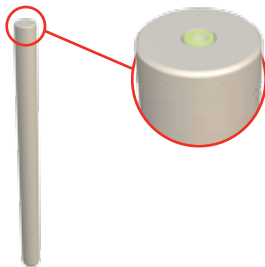
**Art. No. 8200** 0.8m x Ø76mm. Weight 2.3kg  
Oil-treated electroplated steel



## Steel Flange Clamp

Two clamps and a cup combine for use with steel structures when using the SkyReach Anchor as a fall arrest system for loading and unloading vehicles.

**Art. No. 8500** 0.75m x 0.2m. Weight 13.8kg  
Fits steel columns with a flange width of between 15cm and 45cm Steel  
Hot-dip galvanised steel



## Levelling Element

The levelling element is a steel tube with a level on the top that is applied to ensure vertical position of the Cast-In Sleeve when the sleeve is placed into concrete.

**Art. No. 83416** 1.0m x Ø72mm. Weight 2.8kg  
Galvanised steel



## SkyReach Reach Hook

The Reach Hook is used to reach adjacent SkyReach Anchors, which are out of reach by hand when changing the anchorage. Extendable between 1.2 to 2.7 m.

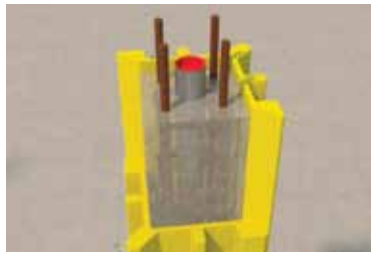
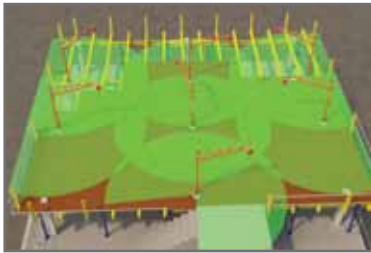
**Art. No. 11530** 1.2m – 2.7m. Weight 1.0kg  
Aluminium/Galvanised steel

## Personal Fall Protection Equipment

To create a complete system to protect the operative when working at heights, the SkyReach Anchor needs to be equipped with Personal Fall Protection Equipment (PFPE). Speak to your Combisafe representative for a list of PFPE approved for use with the SkyReach Anchor.

## WORKING WITH THE SYSTEM

The SkyReach Anchor is designed to be a light weight product that can be easily folded for relocation or transport, which leads to a space-saving and easily portable product.



### STEP 1:

#### PLANNING THE AREA

In order to facilitate the use of the SkyReach Anchor it is highly recommended to plan the area before starting the job.

### STEP 2:

#### FIXING METHOD

Position, level and cast the Cast-in Sleeve in the concrete column. Allow for sufficient curing of concrete to enable safe operation of the system.



### STEP 3:

#### SETTING UP THE ASSEMBLY

Place the SkyReach Anchor, still folded, into the Cast-in Sleeve. Remove the Lock Pin, unfold and arrange the boom and brace into its operational position then re-secure the Lock Pin. Attach the Fall Arrest Block and secure to the harness.

### STEP 4:

#### CHANGING THE ANCHOR POINT

Operatives must never unhook themselves from one SkyReach Anchor device before hooking up to the next SkyReach Anchor. If the second SkyReach Anchor is out of reach an optional SkyReach Hook is available to assist with transition.



If using the SkyReach Anchor for the loading and unloading of vehicles next to a steel column, select the Steel Flange Clamp and install as directed in the user instruction. The Clamps can be used for columns with a flange size from 150mm to 450mm.



## WHY COMBISAFE?

### COMBISAFE: WORLD CLASS CONSTRUCTION SAFETY SYSTEMS

Our 'safety by systems' concept has evolved over many years and incorporates products, accessories, technical services and training to provide the construction industry with the very best safety solutions available.

The Combisafe name is a benchmark for best practice that encompasses every construction method and includes a full range of design and support services.

#### COMBISAFE INTERNATIONAL LTD

Safety Centre, Cheaney Drive,  
Grange Park, Northampton, NN4 5FB  
United Kingdom

Tel: +44 (0)1604 660 600  
Fax: +44 (0)1604 662 960  
Email: [info@combisafe.com](mailto:info@combisafe.com)  
Web: [www.combisafe.com](http://www.combisafe.com)

**COMBISAFE®**  
SAFETY BY SYSTEMS