

STEEL MESH BARRIER LIGHTWEIGHT

Bringing Edge Protection to
New Heights.

Honeywell COMBISAFE® Steel Mesh Barrier

Honeywell
COMBISAFE®



THE LIGHTWEIGHT AND FLEXIBLE ALTERNATIVE

Honeywell has over the years, built a platform based on our experience with and acquired knowledge from the construction industry. Honeywell will help you with on-site safety decisions.

With solutions available for most construction sub-sectors, Honeywell COMBISAFE® products are effective, adaptable and simple to install. With the widest selection of attachments and accessories in the industry, you can rely on us to find a solution that exactly meets your needs. When you choose Honeywell COMBISAFE®, you choose the expertise of a genuine market leader, where every factor has been considered, and every product tested to an unrivalled standard.

Honeywell COMBISAFE® has worked with our customers and listened to the needs of the industry to introduce a new version of our popular Steel Mesh Barrier (SMB) and brings to the market a new lightweight version.

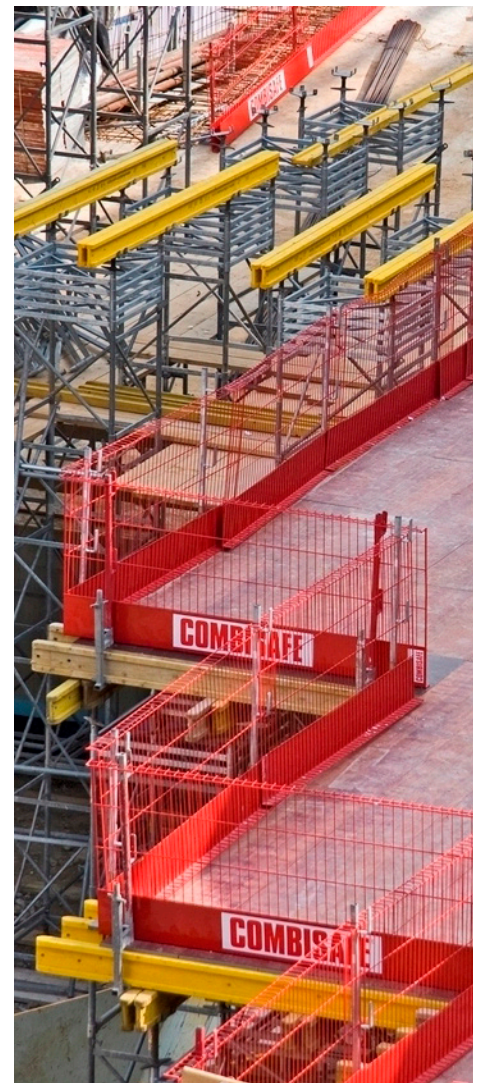
Applications

The Lightweight barrier has been developed to offer a safety system for almost every challenging construction environment. The flexibility of the application allows for it to be used on the ground or at height and at any stage of a construction project. With a variety of attachments, the Lightweight barrier can be used in a variety of environments.

Intelligent planning is central to on-site safety, which is why we like to work with our customers from the outset to maximise the benefits of our edge protection systems, as well as improving site productivity and reducing lead times.

This lightweight barrier not only helps prevent accidents at work, but also in preserving the good health of the workers.

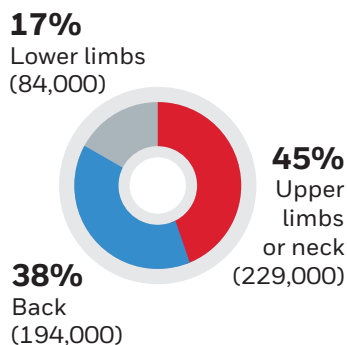
Within a construction environment there is always a high risk of injury from falls, but also from injuries related to day to day tasks. By making the new steel mesh barrier lightweight, easy to lift and move, it can help to decrease muscular injuries and reduce fatigue on a job site. This would leverage in many directions such as reduction in employees being off sick, increase in productivity and reducing fatigue over all injuries and falls can be reduced as an employee is less tired and more focused.



WORK RELATED MUSCULAR DISORDERS

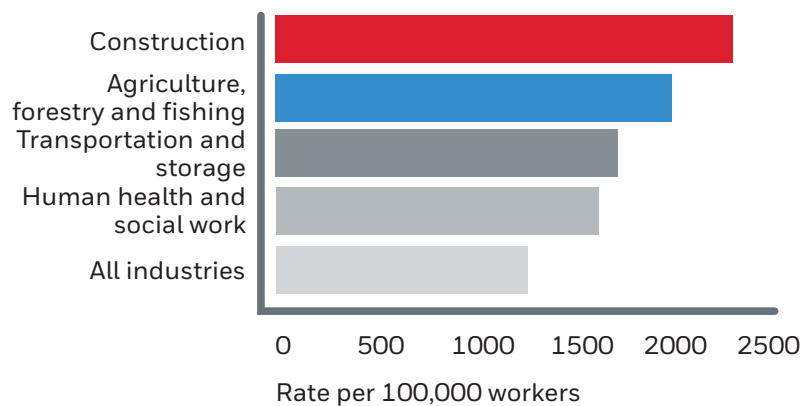
Construction is one of the highest averaging industries for musculoskeletal disorders. Continuous lifting of heavy weights is a major contributing factor to musculoskeletal injuries and is a driving factor in the design of the new barriers

Musculoskeletal disorders by affected area, 2016/17



Source : <http://www.hse.gov.uk/statistics/overall/hssh1617.pdf>

Industries with higher than average rates of musculoskeletal disorders, averaged



WORKPLACE ACCIDENT FACTS

- There were 3876 fatal accidents at work in the EU-28 during 2015, an increase of 102 deaths compared with the year before
- More than one fifth of all fatal accidents at work in the EU-28 took place within the construction sector
- In 2015, three quarters of all non-fatal accidents at work in the EU-28 concerned: wounds and superficial injuries; dislocations, sprains and strains; or concussion and internal injuries

*Source - https://ec.europa.eu/eurostat/statistics-explained/index.php/Accidents_at_work_statistics



FEATURES & BENEFITS

Two versions available: Both being the lightest steel edge protection barrier made (weight per meter) in class A and class ABC

BENEFITS OF CLASS ABC VERSUS BENEFITS OF CLASS A

BENEFITS OF CLASS ABC

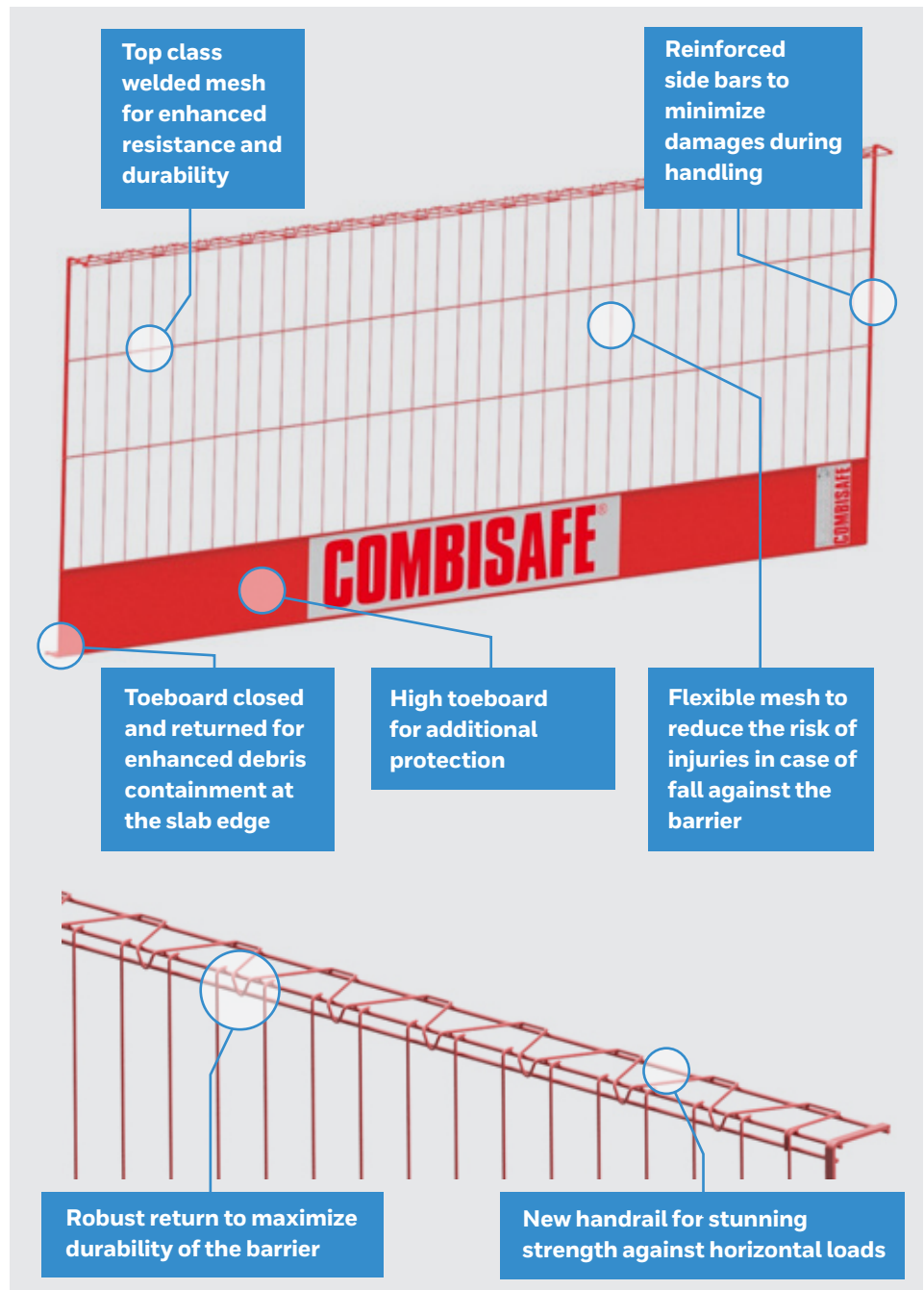
- Fully compliant with EN 13374 class ABC
- Dense mesh construction to help reduce debris from falling
- 14.2 kg

BENEFITS OF CLASS A

- Fully compliant with EN 13374 class A
- Large mesh to make the barrier the lightest possible and allow small work through the barrier
- 12.2 kg

SAVE SPACE IN YOUR YARD

- The lightweight barrier can be stored in the stackable Barrier Box MkII 9532 by adding the add-ons 9534
- Stacking the Barrier box allows for storage up to 58 Steel Mesh Barrier Lightweight per square meter
- Barriers are stored in upright position to improve the ergonomic handling



ORDERING INFORMATION

3240
Barrier class A, B, C
2.6m



3241
Barrier class A, B, C
1.5m



3242
Barrier class A, B, C
1.8m



3245
Barrier class A
2.6m



3246
Barrier class A
1.5m



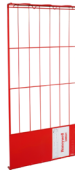
3247
Barrier class A
2.0m



3248
Barrier class A
0.9m



3249
Barrier class A
0.5m



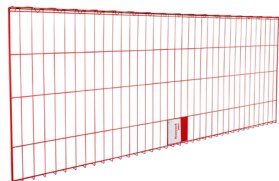
3260
Make up barrier class A, B
2.6m



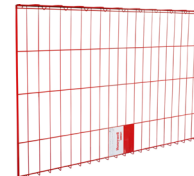
3261
Make up barrier class A, B
1.5m



3266
Debris barrier class A, B
2.6m



3267
Debris barrier class A, B
1.5m



DELIVERING SEAMLESS EDGE PROTECTION

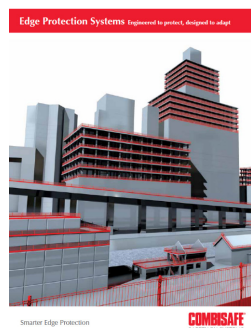
Our product portfolio comprises a broad range of product systems suitable for most construction challenges.

Led by our industry-leading Steel Mesh Barrier (SMB) system, our range also includes innovative solutions such as the POWER POST system, a quick, strong and versatile friction safety post for edge protection in concrete construction.

Our entire product portfolio is accompanied by a truly comprehensive range of attachments, fixings, posts and accessories to ensure that our products can be used universally.

For added safety, many Honeywell COMBISAFE® products are designed for pre-assembly on the ground – allowing them to be fully integrated with building elements before being lifted into position.

For more details, click the image below or visit our website at www.combisafe.com.



For more information on the full range of Honeywell COMBISAFE® solutions and services please contact your local Honeywell COMBISAFE® sales representative
www.honeywellaidc.com

Honeywell Combisafe®
Safety Centre, Cheaney Drive,
Grange Park, Northampton,
NN4 5FB,
United Kingdom
Tel: +44 (0)1604 660600
Fax: +44 (0)1604 662960
www.combisafe.com

Combisafe_Steel_Mesh_Barrier_Brochure_EN | 11/20
© 2020 Honeywell International Inc.

THE
FUTURE
IS
WHAT
WE
MAKE IT

Honeywell