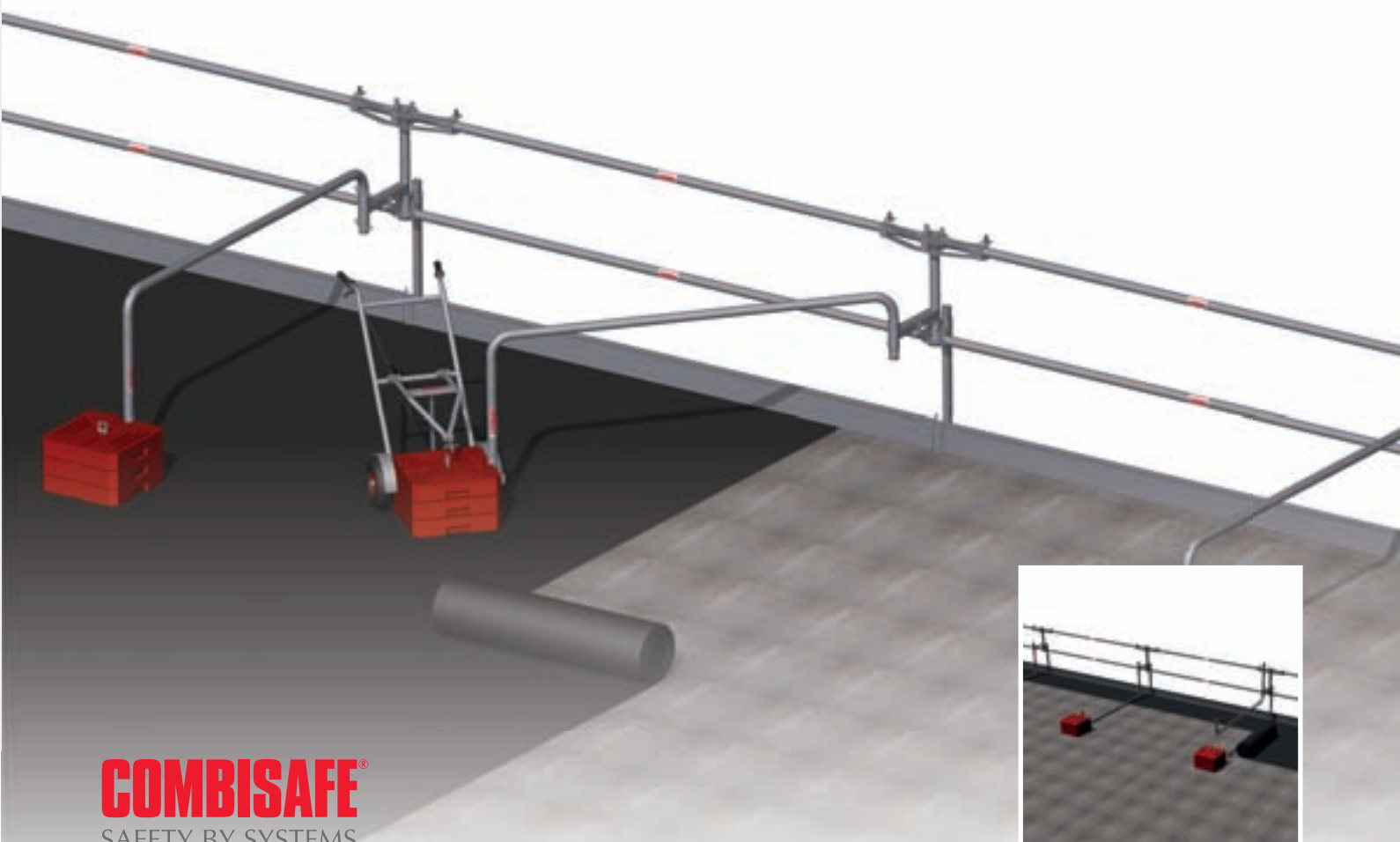


NEW

COUNTERWEIGHT SYSTEM

Rapid, versatile, freestanding edge protection for flat roof construction and renovation projects. Uses a secure counterweight system.

“ *This innovative design provides quick and easy installation, no heavy lifting and good access to the work surface.* ”

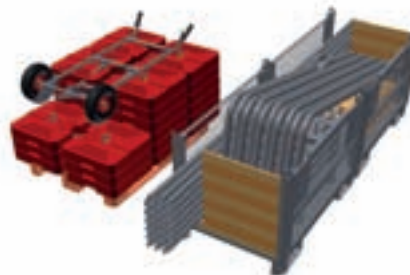


COMBISAFE[®]
SAFETY BY SYSTEMS

NEW

COUNTERWEIGHT SYSTEM

The new Counterweight System from Combisafe is a versatile, easy-to-install solution for temporary edge protection without mechanical anchors on flat roofing. Made of galvanised steel for maximum durability, it uses a lever arm and counterweight assembly to provide protection to EN 13374 A, while offering easy access to the roof deck for construction and renovation teams.



UNIQUE FEATURES:

- Fast and easy to install with no specialist tools needed
- Specially designed ergonomic trolley for installing counterweights
- Lever arm can be installed in 2 different positions: at deck level, or elevated to allow easier access to roof deck
- Includes a toeboard, to reduce the risk of objects and debris falling from roofs

BENEFITS:

- The unique 'hammer in' system of wedge fixings, speeds up installation while attaching counterweights and system Components
- Improved health and safety, with a specially designed trolley for transporting and positioning the rubber counterweights which reduces heavy lifting and manual handling
- Easy adjustment to lever arm and counterweight provides excellent access to roof surfaces. Can also be detached and swung in alongside guardrail
- Galvanised steel delivers maximum durability
- Recycled rubber counterweights, no damage to the roof membrane
- Delivered in two connected and palletised Multi Boxes to make transport, storage and handling easier

The Counterweight System from Combisafe not only complies to EN 13374 class A but also offers a number of unique benefits over other freestanding edge protection systems.

FIXINGS AND SYSTEM COMPONENTS



Weight Pack – 11310, 48kg

Includes 3 x 15kg rubber weights and a weight holder. Each weight is made of recycled rubber for durability and protection of roof membrane. Unlike concrete weights, rubber will not chip or flake, guaranteeing accuracy in weight calculations and system performance.



Lever Arm – 11317, 10.1kg

Can be fitted as a raised support for access to roof deck, or at deck level for greater strength and easier passage for workers along roof edge line. May be moved sideways with weight still attached using trolley, or detached from weight and swung in alongside guardrail for unobstructed access to roof area.

NB: When lever arm is detached, top guardrail **MUST** be supported with stiffener unit.



Hub – 11291, 5kg

Provides secure attachment to support leg and pivot point for lever arm, allowing easy lateral adjustment or removal for access to roof deck.



Guardrails – 10071572/10073072, 11.5kg/5.9kg

Robust steel guardrail in 1.57m and 3.07m lengths for design flexibility in every environment.



Stiffener Unit – 11286, 3.4kg

Adds strength to top guardrail when lever arm is disconnected from weight.



Support Leg – 11295, 2.7kg

Braces system assembly at roof edge and acts as a holder for toeboard.



Trolley – 11324, 14.1kg

Provides easy, single person loading, transport and positioning of rubber weights to reduce manual handling and risk of injury.



Toeboard – 11345 (Optional), 8.1kg

Steel toeboard for safety and durability. Easily secured to support leg using locator pin.



Load Distribution Plate – 11312 (Optional), 0.8kg

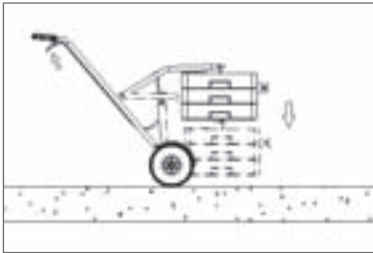
Placed underneath lever arm when installed at deck level to spread loads and protect soft or exposed surfaces.

COUNTERWEIGHT SYSTEM APPLICATIONS

The Counterweight System is the ideal choice for flat roofing projects where there is a need to avoid mechanical anchors that may penetrate and compromise membranes and roof structures. Its versatile configuration allows for a raised support system that makes roof surfaces accessible up to the roof edge line; or a floor level support format that provides easier passage for people and materials and the option to raise lever arms one at a time to work on the roof area beneath.

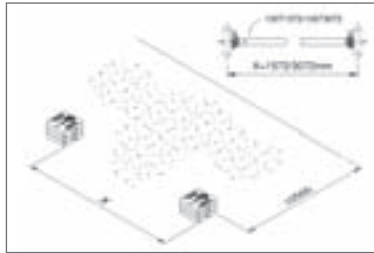
INSTALLING COMBISAFE COUNTERWEIGHT

(where access is needed below lever arm)*



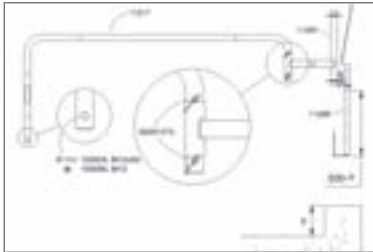
STEP 1

Load trolley with required number of rubber counterweights (up to safe load of 48kg / 3 weights).



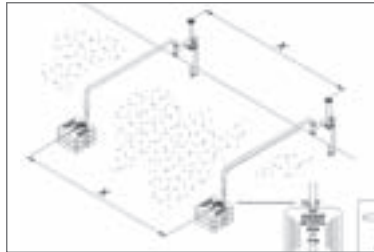
STEP 2

Position weights 2.5m from roof edge, 3m apart when using 3m ledgers, or 1.5m apart with 1.5m ledgers.



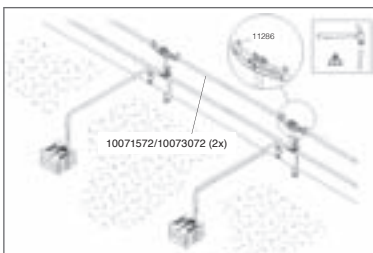
STEP 3

Fit lever arm into sleeve of hub and secure with locking pins. Attach hub to support leg using hammer-in wedge.



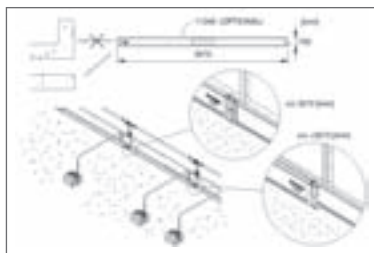
STEP 4

Secure weights to lever arms with wedges and position support legs at roof edge.



STEP 5

Attach Guardrails to Hub and Support Leg with wedges, then mount the Stiffener Units.



STEP 6 (Optional)

Insert and secure toeboards. Please note: All workers installing the Counterweight System at height MUST use suitable PPE/fall arrest systems until guardrail is in place.



WHY COMBISAFE?

COMBISAFE: WORLD CLASS CONSTRUCTION SAFETY SYSTEMS

Our 'safety by systems' concept has evolved over many years and incorporates products, accessories, technical services and training to provide the construction industry with the very best safety solutions available.

The Combisafe name is a benchmark for best practice that encompasses every construction method and includes a full range of design and support services.

COMBISAFE[®]
SAFETY BY SYSTEMS

Combisafe is part of Honeywell

*(NB, if access is not required to roof deck directly beneath lever arm, a different installing method is available (see inset image on cover).