

## BLE Profile Introduction

### BLE Modes

Starting with MicroRAE FW v1.14 BLE can be configured in either of two modes: DC Mobile App Mode or Profile Mode. By default, all BLE-equipped instruments are set in App Mode. Using ProRAE Studio II, you can switch between the two BLE modes:

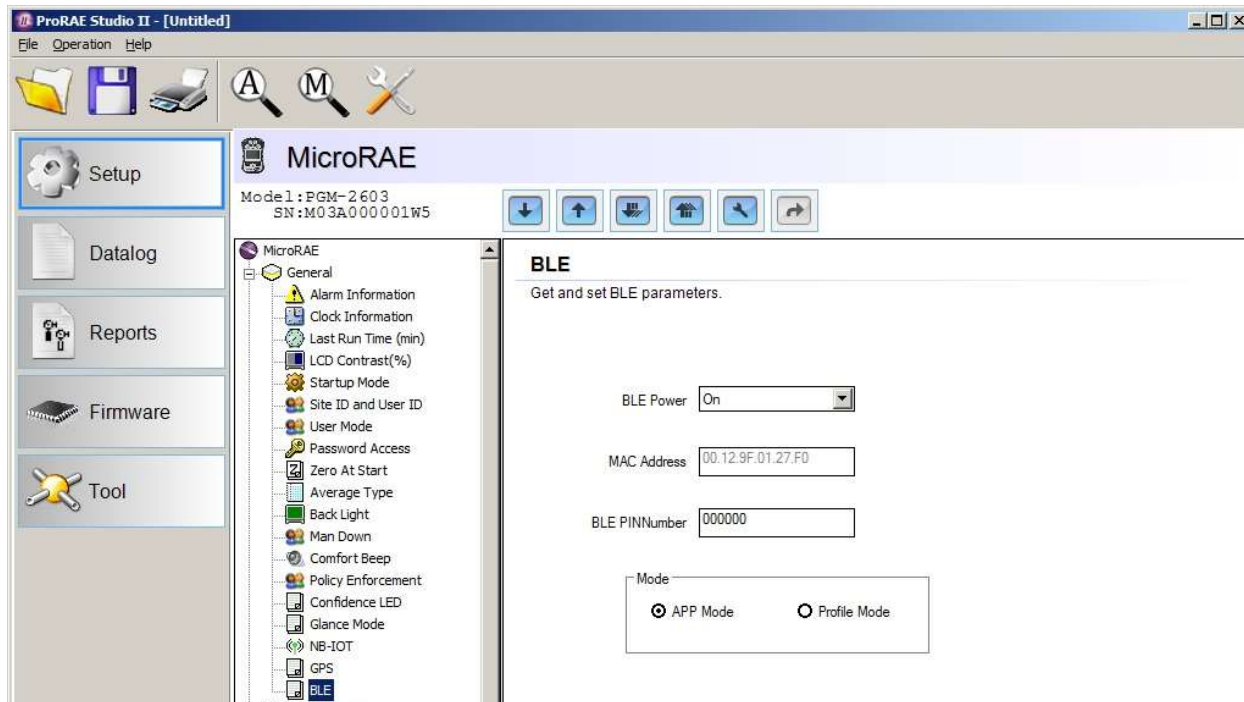
**App Mode** Allows an instrument to be compatible with all Honeywell Mobile Apps (Safety Communicator and Device Configurator). When in App Mode, an instrument is not compatible with third-party solutions.

**Profile Mode** Profile Mode allows an instrument to be compatible with third-party wireless infrastructure. Please engage with Honeywell support to understand approved third-party systems supported by Profile Mode.

When in Profile Mode, an instrument is absolutely not compatible with Honeywell mobile apps.

### Configuring BLE (BLE-Equipped Instruments Only)

If your MicroRAE is equipped with a BLE module, you can turn it on or off through the Wireless Radio ON/OFF menu in Programming mode. You can also use ProRAE Studio II.



On the instrument, you can check which of two configurations is selected (App Mode or Profile Mode). Start at the main screen and press [N/-] repeatedly until you see either of this screen:



### **Pairing A MultiRAE BLE Module In App Mode**

To use the MicroRAE equipped with BLE to communicate with a smartphone running Device Configurator, you must follow the instructions in the App (Device Configurator or Safety Communicator) for pairing. When you invoke the MicroRAE, the instrument screen will show a pairing screen.

Type the pairing code into mobile app to pair the instrument and the smartphone/mobile app.

### **Pairing MicroRAE BLE Module In Profile Mode**

When in Profile Mode, the instrument pairing methodology is “just work,” and settings should be done from the third-party wireless system.