

Technical Note

Installation Procedure for Vertex Configuration Utility software on an external PC

1998-0568 Rev 1 11/04

Procedure for Installation on Customer-supplied PC

Zellweger Analytics, Inc is providing this procedure to install the Vertex Configuration Utility software for pre-staging or altering the Vertex Gas Monitor System on customer-supplied PC(s) prior to updating the actual Vertex System.

NOTE:

Any software upgrades performed on the Vertex Gas Monitoring System, requires the customer to upgrade all companion Vertex Configuration Utility installations externally for proper operation. Zellweger Analytics, Inc is not responsible for the upgrade of client systems. Failure to properly upgrade the Vertex Configuration Utility software may cause improper information or operations to the Vertex system as a result.

Installation Procedure

1. Obtain a copy of ZA Part Number 1295A0316 Vertex Application Software (VAS).

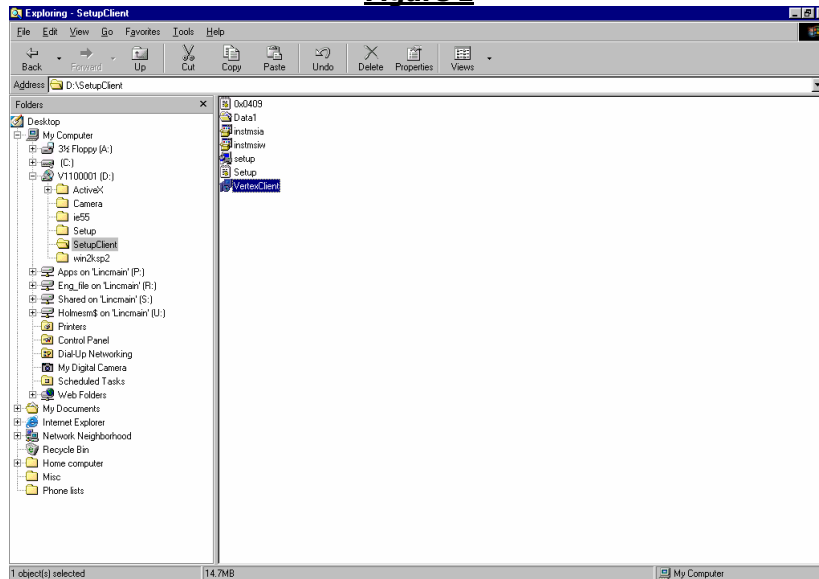
NOTE:

- Every customer should have the latest version of the Vertex Application Software in their software binder as the Vertex Systems are upgraded.
2. If the PC you are using has an existing version of the Vertex Application Software installed, go to Add/Remove Program under Control Panel to remove it.
 3. Insert the VAS CD into the drive of the PC you wish to install the Vertex Configuration Utility.
 4. Open Windows Explorer and open the CD drive. Double click on folder "SetupClient"

Technical Note

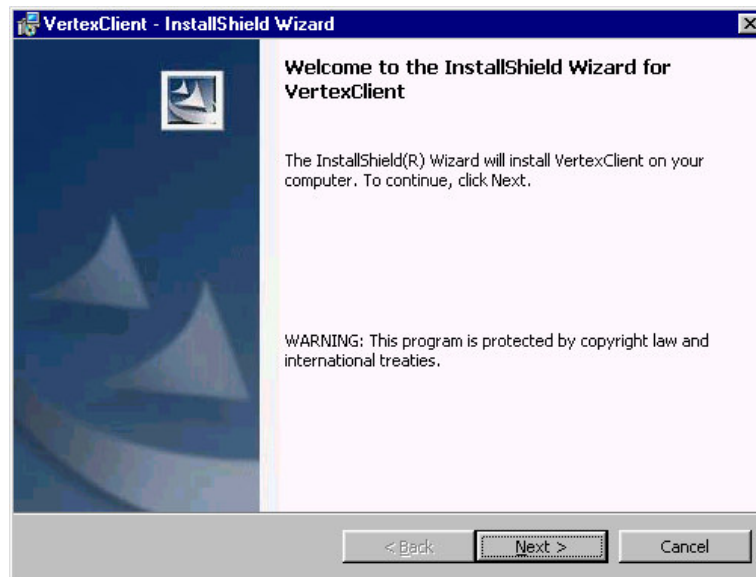
5. Double click on VertexClient as shown in Figure 1.

Figure 1



6. Click "Next."

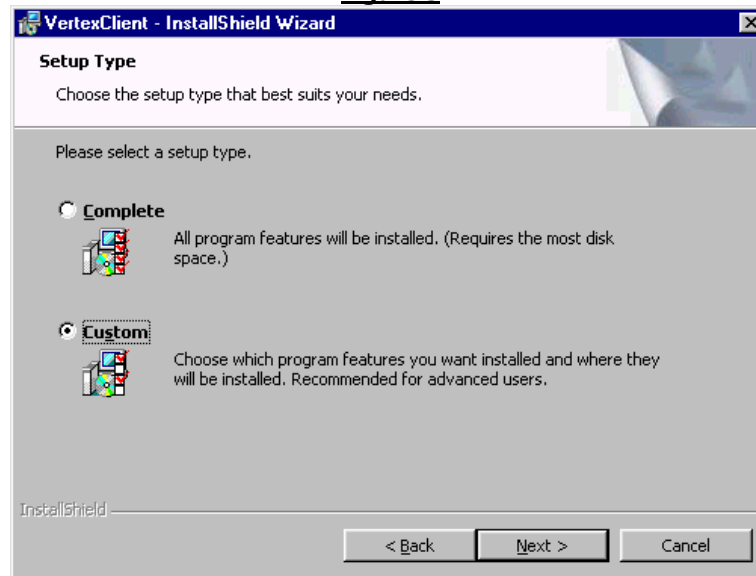
Figure 2



Technical Note

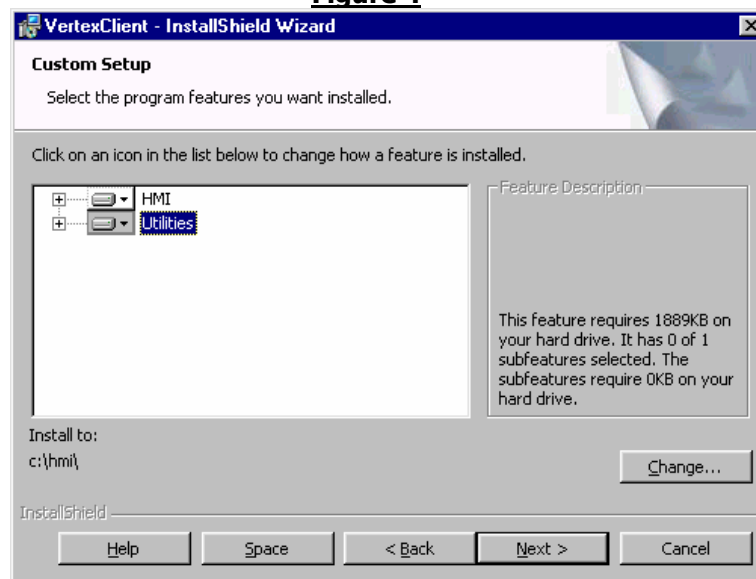
7. Select "Custom" and click "Next".

Figure 3



8. Click on the drive icon labeled "Utilities", followed by "This feature will be installed on local hard drive."

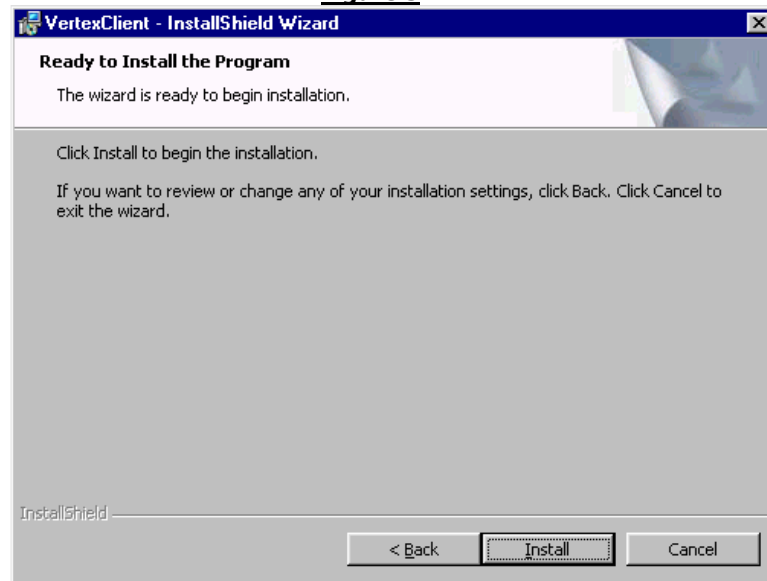
Figure 4



Technical Note

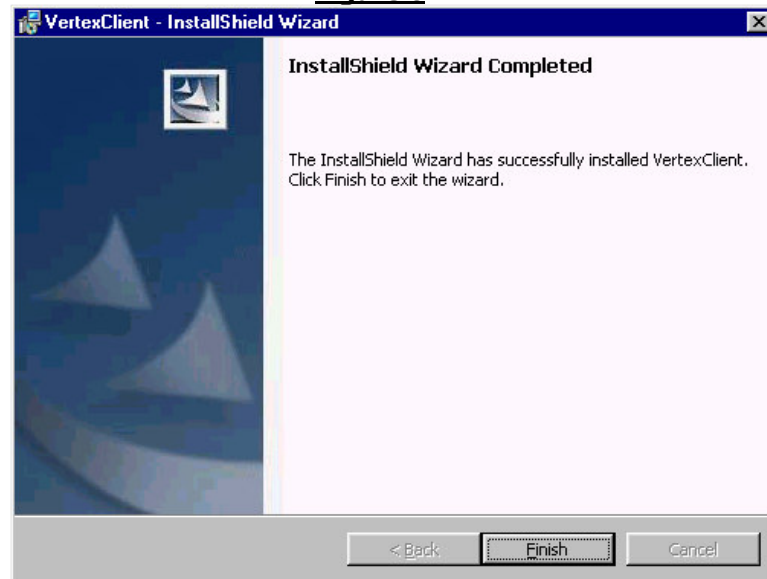
9. Click "Install".

Figure 5



10. When the installation is complete, click "Finish"

Figure 6



Technical Note

11. To run the program, click on "Start", "Programs", "Vertex" then "Vertex Configuration Utility", just as you would for any Windows-based program.
12. When the programming is completed and the configuration file is ready to load into the Vertex, click "Save As" and select a floppy diskette as the source. The file is approximately 16K in size.
13. Insert the floppy into the Vertex floppy drive.
14. Launch the Configuration Utility and click on "File", followed by "Open Profile" and direct the location to the floppy drive in which you have inserted the diskette.
15. Perform the configuration Install as normal.

NOTE:

It is strongly recommended you save the configuration file in the directory C:\HMI\P_Util on the Vertex hard drive. In addition, place the floppy in the Vertex Software Binder that was supplied with your Vertex System for safe keeping.

Zellweger Analytics, Inc.
405 Barclay Boulevard
Lincolnshire, IL 60069

*For more information
contact Zellweger Analytics'
Service Department during
normal business hours at:*

800-323-2000
or 847-955-8200

24-Hour Emergency
Service Hotline:
847-634-2840

This publication is not intended to form the basis of a contract, and the company reserves the right to amend the design and specification without notice.