

# Technical Note

## Extending the life of the Vertex<sup>®</sup> Touchscreen

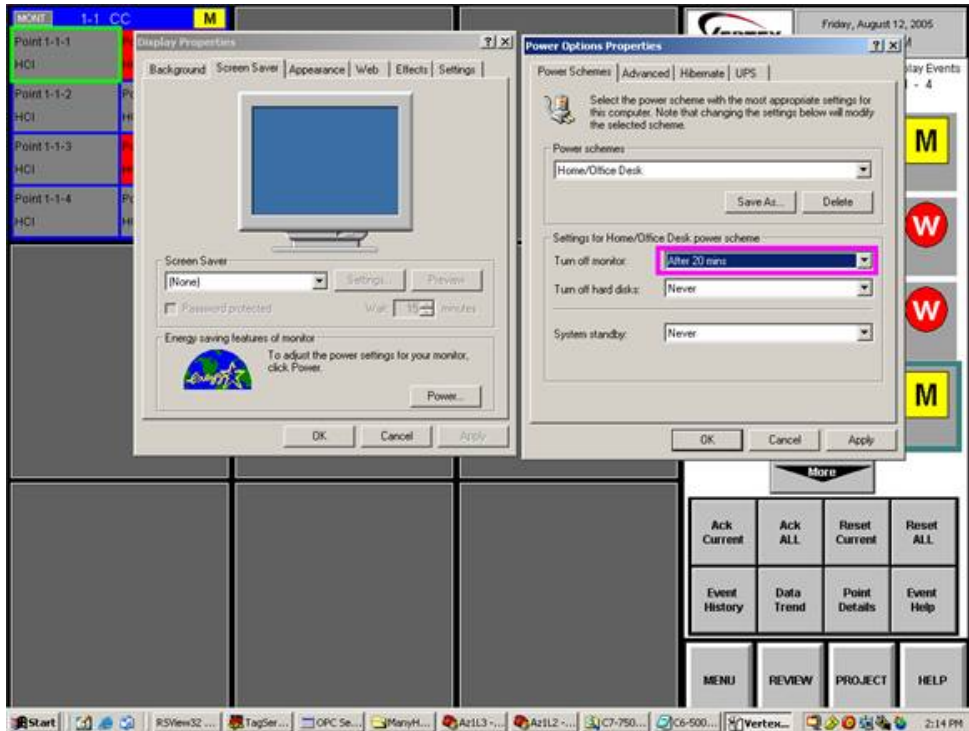
1998-0632 Rev 1 8/05

The expected lifespan as published is approximately 40,000 hours (~4.5 years) for the backlight before beginning to dim. To extend the life of Vertex<sup>®</sup> touchscreen, use the Microsoft Windows<sup>™</sup> Power Options Properties to turn off power to the touchscreen after a period of inactivity. By allowing Windows to remove power to the touchscreen, the lighting elements are turned off, extending the life of the touchscreen.

Applying a standard Windows<sup>™</sup> based screensaver will not have the same effect.

To activate power save, click Start->Control Panel->Display then click on the button labeled "Power" and select the appropriate inactivity time from the "Turn off monitor" menu, and click "OK" (See Figure 1).

The screen can be reactivated by touching it or by typing on an attached keyboard, if equipped.



# Technical Note

**Honeywell Zellweger  
Analytics, Inc.  
405 Barclay Boulevard  
Lincolnshire, IL 60069**

*For more information,  
contact Honeywell Zellweger  
Analytics' Service Department  
during normal business hours:*

**800-323-2000  
or 847-955-8200**

**24-Hour Emergency  
Service Hotline:  
847-634-2840**

*This publication is not intended to form the basis of a contract, and the company reserves  
the right to amend the design and specification without notice.*

1998-0632 Page 2 of 2

 lumidor

 mda scientific

 sieger

 zareba