

# Miller RA41

## Permanent Roof Anchor

### Specification Sheet

#### Materials

Stamping:.....Type 304 stainless steel  
(20 gauge - .035")

D-Ring:.....Zinc plated steel

Nails:.....8 - Galvanized steel (16d)

\*Must be used in conjunction with a shock-absorbing lanyard that will limit fall arrest forces to 900 lbs.

#### Technical

Weight:.....1.50 lbs. (0.68 kg)

Max Working Load:.....310 lbs (140.62 kg)

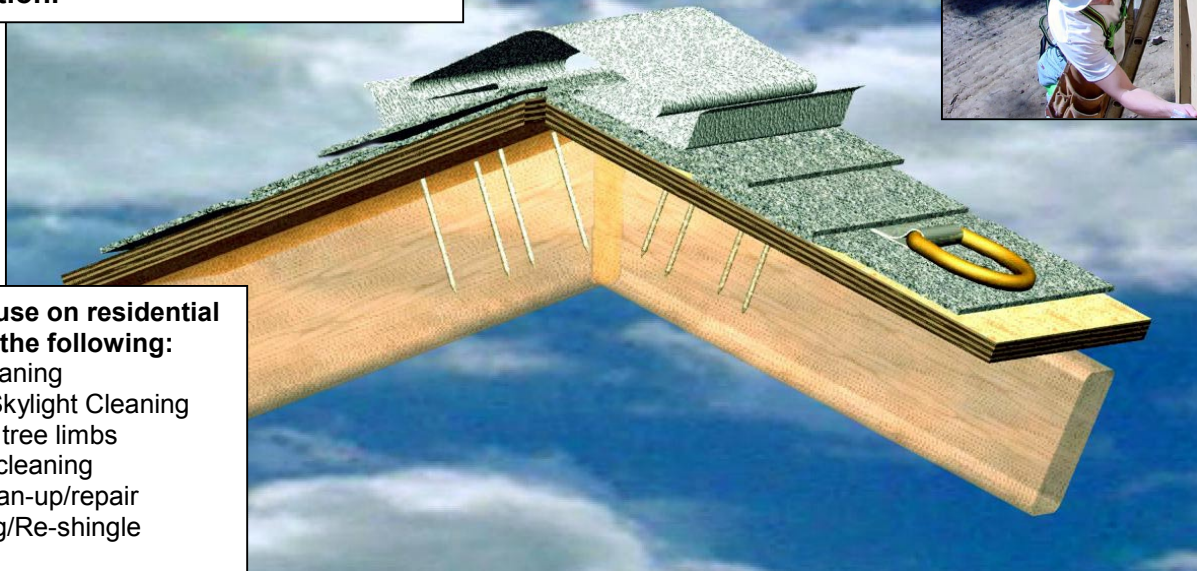
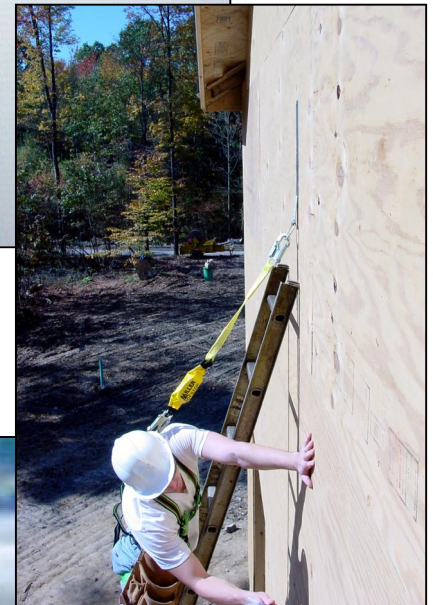
#### Certification

OSHA.....1926.502



The Miller RA41, Single D, Permanent Roof Anchor is designed to provide fall protection on rooftops. The anchor can be applied during new construction or retrofitted into the design of finished roofs with asphalt shingles, shakes or tiles. The Single D is nailed securely across the ridge opening and the roof is finished, overtop of the Single D, with the roofing materials and ridge vent. Only the D-rings are left exposed for a quick and safe connection.

The Single D is also ideal for use on wall mount applications to provide fall protection.



#### Ideal for use on residential roofs for the following:

- Gutter cleaning
- Window/Skylight Cleaning
- Trimming tree limbs
- Chimney cleaning
- Storm clean-up/repair
- Re-roofing/Re-shingle