

NORTH[®]

by Honeywell



HEAD PROTECTION



by Honeywell

North by Honeywell is the most diversified manufacturer of Safety and Personal Protective Equipment (PPE) in the world, with fifteen complete product lines, manufactured in ISO 9000 certified plants and employing over 3,000 people throughout the world.

North works closely with distributors and end users alike through innovative product design, quality manufacturing, solid marketing, training and support to our customers. Our goal is to enhance worker safety, improve productivity, and create confidence on the job and in the market place.



HEAD PROTECTION

North hard hats and accessories provide comfortable and dependable head protection your employees will want to wear, featuring stylish, lightweight shell designs, suspension height adjustment and comfort padding. Our pin lock, quick fit and ratchet adjustment suspensions all make use of the natural shape of the head to create a firm yet comfortable fit, providing workers with superior comfort all day long. Greater compliance and worker safety in head protection... an active part of our ongoing commitment to quality, innovation and the enhancement of safety in the workplace.



by Honeywell

Head

Protection

Research and Development



Research and development utilizing computer aided design is an ongoing process integrating our expertise in engineering, ergonomics and manufacturing. New models are developed, manufactured and tested for performance as well as consumer tested for fit, style and comfort.

Quality and Standards Testing



North tests its hard hats in its own laboratories within its ISO 9001 certified factory. In addition, all North hard hat are recertified annually by SEI and CSA. Our comprehensive program of routine testing is approved and on file with the standards organizations which certify our products.

Quality and Standards Compliance



All North hard hats are made completely (shell and suspension) from dielectric materials, to meet ANSI and CSA Class E requirements.



ANSI Type I / CSA Type 1 hard hats meet stringent vertical impact and penetration requirements and are independently certified by SEI and CSA.



ANSI Type II / CSA Type 2 hard hats meet both vertical and lateral impact and penetration requirements and are independently certified by SEI and CSA.

Materials

North uses HDPE (High Density Polyethylene) designed specifically for use in hard hats, made from 100% virgin material and protected from UV radiation using a special additive. Our wide spectrum of custom-developed colors lets us match your hat to your corporate identity, or identify work teams by hat color.

PA (Polyamid): For applications requiring heat and spark resistance in a plastic material.

Manufacturing

North uses modern, computerized injection molding presses in the fabrication of its hard hats to exacting standards, producing a wide range of designs efficiently and with consistent quality and stable colors.

Training

As a world class manufacturer of PPE, North offers a wide variety of comprehensive inhouse and onsite training programs on all product lines.



Ratchet and Quick-Fit Suspensions



Quick Fit

North Quick Fit suspensions use an easy-to-adjust system of interlocking teeth for a firm hold. Simply squeeze the buckle tabs to loosen the band, and slide to tighten.



SmoothLok™

North SmoothLok™ Ratchet suspensions feature an extra-secure and comfortable grip that lets the wearer work in any position without fear of slippage. Simply twist the knob to adjust.



by Honeywell

www.northsafety.com

North Hard Hats



Dependable Protection

THE PEAK A59, A69, A79



A versatile and dependable design, with grooved HDPE outer shell, rain trough and accessory slots. Choice of 4 or 6-point, nylon web or plastic suspension, with pin lock or ratchet size adjustment (see information below). All suspension choices feature 3-level height adjustment.

Model	Suspension	Shell	Adjustment	Type	Weight
A59	4-point plastic	HDPE	Pin lock	ANSI	10.8 oz.
A59R	4-point plastic	HDPE	Ratchet	ANSI	11.3 oz.
A69	6-point nylon	HDPE	Pin lock	ANSI/CSA	10.7 oz.
A69R	6-point nylon	HDPE	Ratchet	ANSI/CSA	11.8 oz.
A79	4-point nylon	HDPE	Pin lock	ANSI/CSA	10.4 oz.
A79R	4-point nylon	HDPE	Ratchet	ANSI/CSA	11.6 oz.

A59 REPLACEMENT SUSPENSION



A59S1 - Pin lock 4-point plastic suspension for A59.



A59RS - Ratchet 4-point plastic suspension for A59R.



Pin lock Adjustment
Sturdy, easy to use, 4-point pin lock headband.



Ratchet Adjustment
The ratchet adjustment headband offers a firmer and more comfortable fit.

A69, A79 REPLACEMENT SUSPENSION



A69S2 - Pin lock 6-point nylon suspension for A69.



A69RS2 - Ratchet 6-point nylon suspension for A69R.



A79S2 - Pin lock 4-point nylon suspension for A79.



A79RS2 - Ratchet 4-point nylon suspension for A79R.

Lateral Impact

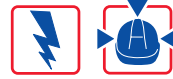


Matterhorn

Hard Hats

Foam Lined for Lateral Protection

THE MATTERHORN A89, A89R



A89FN



A89RS3

ANSI Type II Class E and CSA Type 2 Class E

All-purpose lateral impact hard hat with foam liner, HDPE outer shell grooved for rigidity, rain trough and accessory slots. Choice of unique quick fit or ratchet suspension, both with forehead comfort band and crown pad, offering workers greater choice and comfort. Both suspensions feature a 4-point nylon web cradle with three-level height adjustment.

Model	Suspension	Shell	Adjustment	Type	Weight
A89	4-point	HDPE	Quick fit	ANSI/CSA	14.7 oz
A89R	4-point	HDPE	Ratchet	ANSI/CSA	15.6 oz



Quick Fit Adjustment

Sturdy, easy to use, 4-point headband.



Ratchet Adjustment

The ratchet adjustment headband offers a firmer and more comfortable fit.

THE SUMMIT A99R



A99RF



A99RS2

ANSI Type II Class E and CSA Type 2 Class E

Top-of-the-line foam lined, lateral impact hard hat, without rain trough. Fully adjustable 6-point nylon web ratchet suspension for total comfort. The suspension features self-centering and two-level height adjustment, forehead comfort band and crown pad. The ratchet size adjustment provides increased stability and wearability in demanding situations. The robust HDPE outer shell offers clean styling and accessory slots.

Model	Suspension	Shell	Adjustment	Type	Weight
A99R	6-point	HDPE	Ratchet	ANSI/CSA	17.1 oz



Ratchet Adjustment

The ratchet adjustment headband offers a firmer and more comfortable fit.

Wide Brim



Everest

Hard Hats

for Demanding Environments

THE EVEREST A49, A49R



ANSI Type I Class E and CSA Type 1 Class E

Wide brim HDPE hard hat for protection from the sun's harmful UV rays, rain and falling debris. Ideal for mining, forestry, utilities, the oil industry and other demanding environments. Accessory slots make this the first wide brim hard hat to accept face and hearing protection accessories for the fullest available protection. Choice of high quality suspensions designed for comfort, with forehead comfort band and crown pad, 2-level height adjustment and self centering.

Model	Suspension	Shell	Adjustment	Type	Weight
A49	4-point	HDPE	Pin Lock	ANSI/CSA	14.7 oz
A49R	6-point	HDPE	Ratchet	ANSI/CSA	15.4 oz



A49S2



A49RS2



Pin lock Adjustment

Sturdy, easy to use, 4-point pin lock headband.



Ratchet Adjustment

The ratchet adjustment headband offers a firmer and more comfortable fit.

THE EVEREST A119R W/FOAM LINER



ANSI Type II Class E and CSA Type 2 Class E

All the protective features of the A49R, plus a foam liner for lateral impact protection. Ideal for workers who are exposed to the risk of a blow to the side, front or rear of the head, along with the hazard of falling debris, rain, or the sun's UV rays. The 6-point nylon web suspension, with ratchet size adjustment, forehead comfort band and crown pad, 2-level height adjustment and self centering, provides comfort and stability.



A99RF



A99RS2

Model	Suspension	Shell	Adjustment	Type	Weight
A119R	6-point	HDPE	Ratchet	ANSI/CSA	17.4 oz



A119RGG - Glare Gard

Protects you from the reflections of the sun. Available on wide brim hats.



A29SP WITH VISOR AND CP5007SP BRACKET



A29SRW WITH A606 WELDING HELMET AND CP5007SP BRACKET

Hard Hats

Lightweight and Versatile

A29, A29R



ANSI Type I Class E

A versatile new shell design without rain trough, available in HDPE featuring strength and rigidity in a lightweight hard hat. Complete with accessory slots and 4-point nylon web suspension with forehead comfort band and crown pad, 4-point chin strap anchorage and 3-level height adjustment.



* A29S2



* A79RS2

Model	Suspension	Shell	Adjustment	Type	Weight
A29	4-point	HDPE	Quick Fit	ANSI	11.9 oz
A29R	4-point	HDPE	Ratchet	ANSI	12.9 oz

Quick Fit Adjustment

Sturdy, easy to use, 4-point headband.



Ratchet Adjustment

The ratchet adjustment headband offers a firmer and more comfortable fit.



SHORT PEAK A29SP, A29SPR



ANSI Type I Class E

Short peak hard hat. All of the features of the A29/A29R, plus the convenience of a short peak allowing increased overhead vision. Ideal for workers who climb, look upward frequently or simply require an expanded field of view. Brings protective visors closer to the face.



* Use A29S2 for replacement pinlock suspension
Use A79RS2 for replacement ratchet suspension

Model	Suspension	Shell	Adjustment	Type	Weight
A29SP	4-point	HDPE	Quick Fit	ANSI	12.0 oz
A29SPR	4-point	HDPE	Ratchet	ANSI	13.0 oz

SHORT PEAK WELDER'S A29SRW



ANSI Type I Class E

Features a molded outer shell to withstand heat and sparks. Lighter and more comfortable than comparable fiberglass or polycarbonate products. The short peak brings the welding helmet closer to the worker's face, for a wider view through the window glass. Ratchet suspension for a firm and comfortable fit (Shown here with North welding helmet A606 and special visor bracket CP5007SP).



CP5007SP Visor Bracket



Model	Suspension	Shell	Adjustment	Type
A29SRW	4-point	Polyamid	Ratchet	ANSI
CP5007SP Visor Bracket fits A29SP, A29SPR, A29SRW.				

Low Hazard



Head Protection

BUMP CAPS BC89, BC86



BC89



BC86

Low hazard Bump Cap, well ventilated and lightweight for total wearer comfort.

Ideal for:

- ✓ Food Industry
- ✓ Mechanics
- ✓ Truck Drivers
- ✓ Maintenance Departments

Model	Suspension	Shell	Adjustment	Weight
BC86	4-point	HDPE	Pin Lock	7.3 oz
BC89	4-point	HDPE	Pin Lock	7.5 oz

CONVERT-A-CAP, SC01



SC01



An insert that turns any baseball cap into a piece of protective headgear offering a mild form of head protection for such applications as:

- ✓ Mechanics
- ✓ Muffler Shops
- ✓ Golf Course Personnel
- ✓ Truck Drivers
- ✓ Oil Change Centers
- ✓ Maintenance Departments

Model	Weight
SC01	2.2 oz

GOLD AWARD HAT A79GPA



A79GPA

Ideal for recognition of safety achievements, or for ceremonies and retirements.

(Gold plated hat, not a safety hat)

*Not approved



Make Your



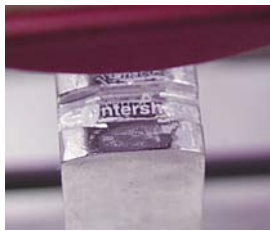
Hard Hats

Part of Your Image!

SHOW YOUR COLORS WITH CUSTOM IMPRINTS



TWO WAYS OF PERSONALIZING YOUR HARD HAT



◀ Pad Printing (High Definition)

Using a flexible rubber pad that can fit the exact shape of the hat, we use a highly resistant ink to print your logo on any part of the shell.



◀ Hot Stamping

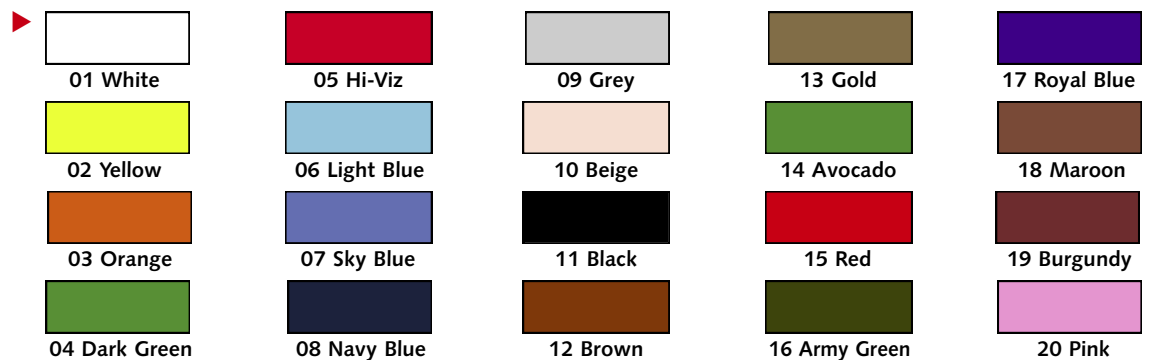
Using a hot metal die we engrave your logo in color in the hat material.



Both methods offer lasting results you will be proud to wear.

CHOOSE FROM OUR WIDE SELECTION OF COLORS

Available colors of HDPE hard hats.



Available colors for A29SRW.



Winter Liners



HARD HAT WINTER LINERS



- ◀ **WL1**-Winter liner, dielectric outer shell, Kasha flannel inner lining, velcro attachment, black.
- ✓ **Dielectric**



- ◀ **WL4**-Deluxe winter liner, quilted green tricot outer shell, heavy red fleece lining, dielectric, velcro attachment, fire retardant.
- ✓ **Dielectric**



- ◀ **WL3**-Winter liner, yellow twill outer shell, flannel lining, dielectric, velcro attachment.
- ✓ **Dielectric**
- ✓ **100% Nylon**



- ◀ **WL6**-Winter liner, Kasha inner lining, velcro attachment, with zipper allowing the lower part to be removed.

Model	Material	Color
WL1	Kasha flannel	Black
WL3	Flannel lining	Yellow
WL4	Quilted tricot	Green
WL6	Kasha inner lining	Black

HARD HAT SOCK TYPE WINTER LINERS



- ◀ **WL20**-Sock type winter liner, fits snugly over hat brim and top of head, 100% stretch nylon, red or blue. To fit regular hard hats.

WL20XL-Same as above for wide brim hard hats.

Model	Material	Color
WL20	Stretch Nylon	Red, Blue
WL20XL	Stretch Nylon	Red

DELUXE HARD HAT WINTER LINERS



- ◀ **WL12FP**-100% fire retardant cotton winter liner with long neck outer shell, with face warmer.

WL12-Same as above, without face warmer.

WL40/1RBSP-100% Nomex outer shell winter liner with heavy quilted lining. Without face warmer.



- ◀ **WL41RBSP**-Westex Proban outer shell winter liner, with heavy quilted lining, available with face warmer.

Model	Material	Face Warmer	Color
WL12	100% FR Cotton	No	Royal Blue
WL12FP	100% FR Cotton	Yes	Royal Blue
WL40/1RBSP	Nomex	No	Royal Blue
WL41RBSP	Westex Proban	Yes	Royal Blue

Winter Liners

PULL-OVER TYPE WINTER LINERS

Pull over type winter liners, to fit over regular or wide brim safety hats, with velcro attachment. Very warm, fits the head snugly. Available in a variety of different materials and colors, with or without a face warmer.



With Face Warmer



Without Face Warmer



To Fit Regulars Hats

Model	Hat Type	Outer Shell	Lining	Face Warmer	Advantage	Colors
WL80	Regular	200 denier nylon	100% cotton	no		Bright orange, navy blue
WL80/1	Regular	200 denier nylon	100% cotton	yes		Bright orange, navy blue
WL81	Regular	Westex Proban	100% FR cotton	no	Fire Retardant	Royal blue
WL81/1	Regular	Westex Proban	100% FR cotton	yes	Fire Retardant	Royal blue
WL82	Regular	Nomex IIIA	Modacrylic	no	Fire Retardant	Royal blue
WL82/1	Regular	Nomex IIIA	Modacrylic	yes	Fire Retardant	Royal blue



To Fit Full Brim Hats

Model	Hat Type	Outer Shell	Lining	Face Warmer	Advantage	Colors
WL86	Full Brim	Westex Proban	100% FR cotton	no	Fire Retardant	Royal blue
WL86/1	Full Brim	Westex Proban	100% FR cotton	yes	Fire Retardant	Royal blue
WL87	Full Brim	Nomex IIIA	Modacrylic	no	Fire Retardant	Royal blue

WELDER'S CAPS



◀ **WC70**-Welder's skull cap, 100% cotton, navy blue.



◀ **WC85**-Welder's cap with neck protector, 100% cotton, navy blue.

WC80-Same as above, white color



◀ **WC75**-Welder's cap with neck protector, Westex Proban fire retardant cotton, lime green.

FACE PROTECTORS, BALACLAVAS & TUQUES



◀ **FM10**-Thermal face protector 100% stretch acrylic.

- ✓ Warm
- ✓ Washable



◀ **WL60**-Balaclava, 100% stretch acrylic.

- ✓ Warm
- ✓ Washable



◀ **WL50**-Snug fit tuque. 100% acrylic.

- ✓ Warm
- ✓ Washable

FIREFIGHTER BALACLAVA



◀ **FH157**-Short Nomex Balaclava.

- ✓ Warm
- ✓ Washable
- ✓ Fire Retardant



◀ **FH257**-Long Nomex Balaclava.

- ✓ Warm
- ✓ Washable
- ✓ Fire Retardant

Accessories



MINER'S LAMP BRACKET



◀ **A9MLB**- Miner's lamp bracket, will adapt to all hard hat models.

RATCHET NAPE STRAP



▲ **A79RNS**-Converts a pin lock headband into a ratchet adjustment for hats A49, A59, A69, A79.

GOGGLE CLIPS



▲ **GC2000**-Hard hat goggle clips, fits A29, A59, A69, A79, A89. Package of 3.

CHIN STRAPS FOR ALL NORTH HARD HATS



▲ **A79C100**
- 2-point chin strap



▲ **A99C100**
- 4-point chin strap

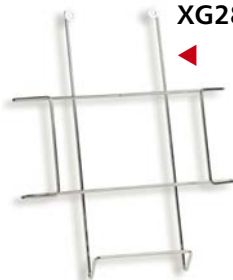


▲ **A29C100**
- 4-point chin strap

STORAGE RACKS



◀ **XG27**-Hard hat wire cradle for vehicles. Ensures your hat is always clean and safely with you on the road.



◀ **XG28**-Hard hat wall mounted cradle.

NORTH
by Honeywell

www.northsafety.com

SWEAT/COMFORT BANDS



▲ **SB79**-Replacement forehead comfort band to fit all safety helmets except: A49, A49R, A99R, A119R. Package of 10.



▲ Foam sweat band with laminated terry cloth on one side and brushed nylon on the other. Washable, package of 10

SB460-For hats A79, A69, regular or ratchet.

SB461-For hats A99R, A119R.



▲ **SB470**-Terry cloth sweat band with velcro closure. Washable, universal fit.



▲ **450SB**-Foam sweatbands with elastic. Package of 25.

REFLECTIVE STRIPE

Tough outer vinyl omni angular North-Brite reflective tape, 1"x4", 100 % fluorescent, resistant to abrasion, excellent performances at dawn and dusk. Available in 3 colors.



TVP1X4/YLW - yellow
TVP1X4/ORG - orange
TVP1X4/WHT - white
16/Sheet



Replacement Parts

REPLACEMENT SUSPENSIONS



A29S2- Replacement Quick Fit 4-point nylon suspension for A29, A29SP.



A49S2- Replacement pin lock 4-point nylon suspension for A49.



A49RS2- Replacement ratchet 6-point nylon suspension, includes additional strap for A49R.



A59S1- Replacement pin lock 4-point plastic suspension for A59.



A59RS- Replacement ratchet 4-point plastic suspension for A59R.



A69S2- Replacement pin lock 6-point nylon suspension for A69.



A69RS2- Replacement ratchet 6-point nylon suspension for A69R.



A79S2- Replacement pin lock 4-point nylon suspension for A79.



A69TL- 6-point strap, converts A79S1 and A79RS2 suspension to a A69S and A69RS2.



A79RS2- Replacement ratchet 4-point nylon suspension for A79R, A29R, A29SPR, A29SRW.



BC86S- Replacement pin lock suspension for BC86 Bump Cap.



BC89S- Replacement pin lock suspension for BC89 Bump Cap.



A89S3- Replacement Quick Fit 4-point nylon suspension for A89.



A89RS3- Replacement ratchet 4-point suspension for A89R.



A99RS2- Replacement ratchet 6-point nylon suspension for A99R and A119R.

REPLACEMENT FOAM LINERS



A89FN- Replacement foam liner for A89 and A89R.



A99RF- Replacement foam liner for A99R and A119R.

Head Protection

	Page
<hr/>	
Hard Hats	
<hr/>	
Technical Sheet	3
Testing and Standards	3
Peak Series	5
Foam Lined Series	7
Wide Brim Series	9
K2 Series	11
Bump Caps	13
Award	13
Customized Printing	15
Color Chart	15
Winter Liners	
<hr/>	
Winter Liners	17-18
Welder's Caps	19
Face Protectors	19
Firefighter Balaclavas	19
Accessories & Replacement Parts	
<hr/>	
Miners Lamp Bracket	21
Goggle Clips	21
Chin Strap	21
Car Rack, Wall Rack	21
Sweat Bands	21
Reflective Stripes	21
Suspensions	22
Foam Liners	22

NORTH

by Honeywell

www.northsafety.com

GLOBAL HEADQUARTERS

USA

2000 Plainfield Pike, Cranston, RI 02921
Tel: 401-943-4400
Toll Free Tel: 800-430-4110
Toll Free FAX: 800-572-6346
Customer Service: 800-777-9021

CANADA

MONTREAL

Tel: 514-351-SAFE (7233)
Toll Free Tel: 1-888-212-SAFE (7233)
Fax: 514-355-SAFE (7233)

TORONTO

Tel: 1-888-316-7233
Fax: 1-888-667-8477

EDMONTON

Tel: 1-800-661-3638
Fax: 780-436-0048

EUROPE

THE NETHERLANDS

Tel: +31(0)118 656400
Fax: +31(0)118 627535

LATIN AMERICA

CUSTOMER SERVICE

Tel.: 1-514-905-3715
Fax: 1-514-351-2645
Montréal
10550 Parkway Blvd.
Anjou, Québec
H1J 2K4
email: hsp.latinamerica@honeywell.com

MEXICO

CUSTOMER SERVICE

Tel.: (01152) 55-9138-3491
Fax: (01152) 55-9138-3492
01800-788-3074 (Mexico only)
email: hsp.latinamerica@honeywell.com

ASIA & PACIFIC

Tel: 61-3-9337-9111

CHINA

Tel: 86-10-67892289

WARRANTIES

North products are covered by and subject to the terms and conditions of the North by Honeywell Ltd Warranty that appears in our annual price list. The North by Honeywell Warranty is the only written warranty of any force and effect, and all other written warranties are disclaimed in their entirety. In no event shall North by Honeywell or any of its authorized dealers be liable for any damages in excess of the purchase price of the relevant product. This limitation applies to damages of any kind, including but not limited to direct or indirect damages or other special, incidental, exemplary or consequential damages, whether arising out of the use or inability to use the product, even if we or any of our authorized dealers has been advised of the possibility of the damages or any claim by any other party. Servicing of any product with parts not approved by us will void the warranty and may result in loss of any certification or approval applicable to the product.

Distributed by

