

## RELEASE NOTES

### BW Ultra

Version: V1.024  
Release Date: May 2023

All users are recommended to update their existing BW Ultra instruments with the latest firmware.

### What's New?

This new firmware implements changes for better performance of all BW Ultra products (see **“Changes”** and **“Improvements”** sections for details). This release also contains fixes for customer-reported issues (see **“Issue Fixes”** section for details).

## Installation and Update Notes

### Installation

Firmware can be updated using Safety Suite Device Configurator (SSDC) or Safety Suite Deluxe (SSD) software through the IntelliDoX or an IR Dongle connection.

### Update Firmware through IntelliDoX

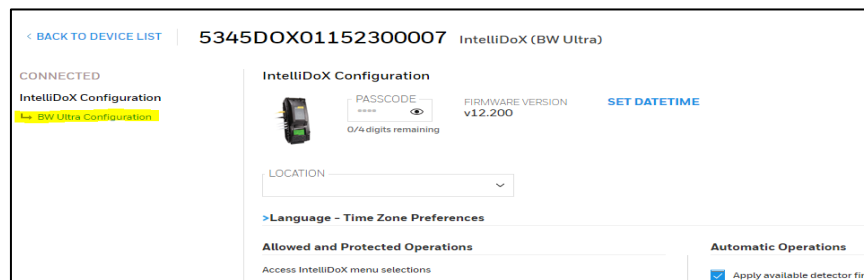
Before you begin your update, ensure that the IntelliDoX is connected to PC. You should see the IntelliDoX in a connected state. If it is not connected, make sure the IntelliDoX IP address is added under the settings screen of SSDC or SSD. See below for step-by-step instructions.

#### For PC's Connected to Internet:

1. If your PC is connected to the internet, you can automatically update your device. Select your IntelliDoX serial number. Be sure to verify the serial number and model number. A configuration menu will appear.

SEARCH	SERIAL NUMBER	FIRMWARE VERSION	DEVICE TYPE	MODEL NUMBER	ASSIGNED WORKER	LOCATION	LAST SUCCESSFUL CALIBRATION	LAST SUCCESSFUL BUMP	LAST DOWNLOAD DATE/LC	DEVICE STATUS
<input type="checkbox"/>	5220DOX01170300016	V12.200	IntelliDoX	BW Clip4			--	--	10/08/2021	Active
<input type="checkbox"/>	5345DOX01141500038	V12.200	IntelliDoX	GasAlertMicroClip			--	--	10/08/2021	Active
<input type="checkbox"/>	5220DOX01213800070	V12.200	IntelliDoX	GasAlertMicroClip		Rentals	--	--	--	Active
<input type="checkbox"/>	5345DOX01152300007	V12.200	IntelliDoX	BW Ultra			--	--	--	Active
<input type="checkbox"/>	5220DOX01213100019	V12.200	IntelliDoX	BW Icon / BW Flex			--	--	--	Active

2. From the configuration menu, select BW Ultra Configuration on the left panel of the screen. Under 'Automatic Operations,' be sure to select 'Apply available detector firmware upgrades.'

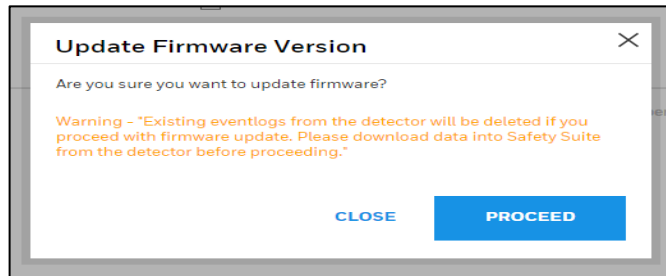


## RELEASE NOTES

- In the BW Ultra Configuration screen select 'Update' to start the Firmware download and installation on the IntelliDoX.



- A dialog box titled 'Update Firmware Version' should open. Please read the note and be sure to save any data into Safety Suite. Select 'Proceed' to start the download.



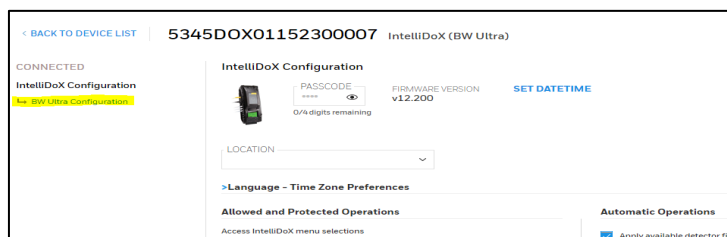
- You can see the firmware update's progress in the upper left corner. Once the update is complete, the firmware will be loaded on the IntelliDoX and will be installed on the instrument the next time you dock a BW Ultra unit.

### For PC's not Connected to Internet:

- If your PC is not connected to the internet, you will have to manually apply the firmware. Download the firmware from: <https://sps.honeywell.com/us/en/software/safety/gas-detection-software-and-firmware>. Please note, the compressed package includes a .rpf file and a .bin file. The .rpf file will be used to update your IntelliDoX via SSDC.
- Select your IntelliDoX serial number. Be sure to verify the serial number and model number. A configuration menu will appear.

Status Active		Search IntelliDoX IPs								Search AutoRAE2 IPs	
	SERIAL NUMBER	FIRMWARE VERSION	DEVICE TYPE	MODEL NUMBER	ASSIGNED WORKER	LOCATION	LAST SUCCESSFUL CALIBRATION	LAST SUCCESSFUL BUMP	LAST DOWNLOAD DATE/LOC	DEVICE STATUS	
<input type="checkbox"/>	5220DOX01170300016	V1.2.200	IntelliDoX	BW Clip4			--	--	10/08/2021	Active	
<input type="checkbox"/>	5345DOX01141500038	V1.2.200	IntelliDoX	GasAlertMicroClip			--	--	10/08/2021	Active	
<input type="checkbox"/>	5220DOX01213800070	V1.2.200	IntelliDoX	GasAlertMicroClip		Rentals	--	--	--	Active	
<input type="checkbox"/>	5345DOX01152300007	V1.2.200	IntelliDoX	BW Ultra			--	--	--	Active	
<input type="checkbox"/>	5220DOX01213100019	V1.2.200	IntelliDoX	BW Icon / BW Flex			--	--	--	Active	

- From the configuration menu, select BW Ultra Configuration on the left panel of the screen. Under 'Automatic Operations,' be sure to select 'Apply available detector firmware upgrades.'



### Honeywell Sensing & Safety Technologies

830 E Arapaho Rd, Richardson, TX, 75081  
972-470-4299

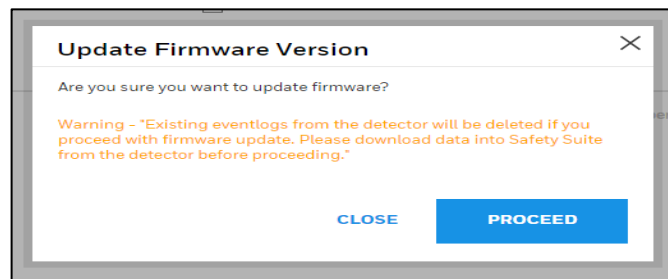
[sps.honeywell.com](https://sps.honeywell.com)

## RELEASE NOTES

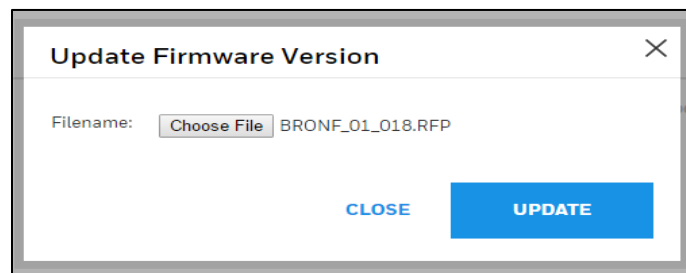
4. In the BW Ultra Configuration screen select 'Update' to start the Firmware download and installation on the IntelliDoX.



5. A dialog box titled 'Update Firmware Version' should open. Please read the note and be sure to save any data into Safety Suite. Select 'Proceed' to start the download.



6. Click on 'Choose File' and navigate to where your .rfp file is saved and select 'Open.' Now, select 'Update' to begin updating your firmware. You can see the firmware update's progress in the upper left corner. Once the update is complete, the firmware will be loaded on the IntelliDoX and will be installed on the instrument the next time you dock a BW Ultra unit.



## RELEASE NOTES

### Through IR dongle connection

1. Ensure that the BW Ultra device is connected to PC through IR cable over USB. You should see the BW Ultra device in connected state in SSDC.
2. Now click on the BW Ultra serial number to access the details screen. We can see the current firmware version in the details screen.
3. If your PC is connected to the internet - If there is a newer firmware available for the device, an update link would appear. click the 'Update' button to set the firmware to the latest version.
4. If your PC is not connected to internet, you can manually apply the firmware. The firmware can be downloaded from: <https://sps.honeywell.com/us/en/software/safety/gas-detection-software-and-firmware>.
5. Click the 'Update' button. This will bring a file selection dialog. Click 'Choose File' and select the firmware file you would like to apply.
6. Once, you choose the firmware file, you will be able to see the firmware update in progress.

### Notes:

1. Use Safety Suite Device Configurator v3.6.0 or above, or Safety Suite Deluxe v3.0.3 or above version for the upgrade procedure.
2. Once the instrument firmware is updated to v1.024, we do not recommend downgrading the unit back to previous FW version
3. To verify that the detector is in maximum operating condition, it is recommended that instrument calibration is performed after the firmware upgrade.

### Issue Fixes

- Set points for LEL IR on BW Ultra are showing up different on sensor configuration and certificate.
- Wrong calibration certificate issue for BW ULTRA in Safety suite for LEL sensor alarm set points.
- BLE Issue. Fixed the issue where BW Ultra shows Error-180 and fixed BLE pairing code not updating when set from SSDC.
- Battery hardware revision issue where last character is missing on the display.
- Datalog issue. Once the data log is full, log records are not updated properly.

### Changes

- 1Series SO2 sensor integration
- New command added to read RAE sensor ID/sub-ID
- CO2 calibration with 5 gas mixture
- Mobile APP -- DC APP support
- Black and white display conversion through SSDC / DC app

### Improvements

- Two Decimal points support for a VOC Correction Factor
- CO2 Sensor measurement unit should support %vol

### Previous Versions

BW Ultra FW v1.018